

20210811000391500
08/11/2021 01:42:08 PM
MISCINST 1/5

OCT-07-2008 17:10

REVENUE BUILDING DEPT

2056633116 P.02/02

Council Members

Rosemary Metcalf
Mike Dickens
Willard Payne
Bob Sullivan
Karyl Rice



Mayor

Bobby Hayes

City Clerk

Donna Treslar

October 7, 2008

Mr. Brian E. Harris, P.E.
Gonzalez-Strength & Associates
2176 Parkway Lake Drive
Birmingham, AL 35244

RE: Pelham Towne Center Drainage

Dear Mr. Harris,

This is in response to your request for a letter regarding the storm drainage for the entire Pelham Towne Center development. It is my understanding from you that your drainage study encompasses the entire development and that no additional detention would be needed due to the detention pond that was constructed next to Publix.

Upon review, your drainage study seems to support this conclusion as a preliminary matter to the remainder of the development. Be advised, however, that plans have been approved for approximately 25% of the development, and that I reserve the right to revisit the study and the approval as the plans for future use are made certain, and as improvements are actually sited and constructed.

Sincerely,

Jesse Jowers
City Engineer

PARCEL 2

Part of the SW 1/4 of Section 19, Township 20 South, Range 2 West, Shelby County, Alabama, and being more particularly described as follows:

Begin at the SE corner of the SW 1/4 of the SW 1/4 of said Section 19; thence N 89°26'05" W a distance of 778.22'; thence with a curve turning to the right with an arc length of 339.33', with a radius of 780.00', with a chord bearing of N 20°11'30" E, with a chord length of 336.66', thence with a curve turning to the left with an arc length of 153.46', with a radius of 270.00', with a chord bearing of N 16°22'20" E, with a chord length of 151.40', thence N 00°05'23" E a distance of 622.22'; thence with a curve turning to the left with an arc length of 209.83', with a radius of 270.00', with a chord bearing of N 22°10'25" W, with a chord length of 204.59', thence with a curve turning to the right with an arc length of 81.74', with a radius of 330.00', with a chord bearing of N 37°20'27" W, with a chord length of 81.53', thence N 68°44'35" E a distance of 249.16'; thence S 00°05'23" W a distance of 202.89'; thence S 85°27'19" E a distance of 285.10'; thence N 04°33'49" E a distance of 244.99' to the southerly R.O.W. of Shelby County Hwy #52; thence along said R.O.W. with a curve turning to the left with an arc length of 219.66', with a radius of 1864.69', with a chord bearing of S 74°26'58" E, with a chord length of 219.53', thence along said R.O.W. with a curve turning to the left with an arc length of 128.83', with a radius of 7797.80', with a chord bearing of S 79°26'09" E, with a chord length of 128.83'; thence leaving said R.O.W. S 01°11'07" W a distance of 450.25'; thence N 70°07'01" W a distance of 37.90'; thence S 00°31'35" W a distance of 935.34'; thence N 89°34'06" W a distance of 75.19' to the Point of Beginning.

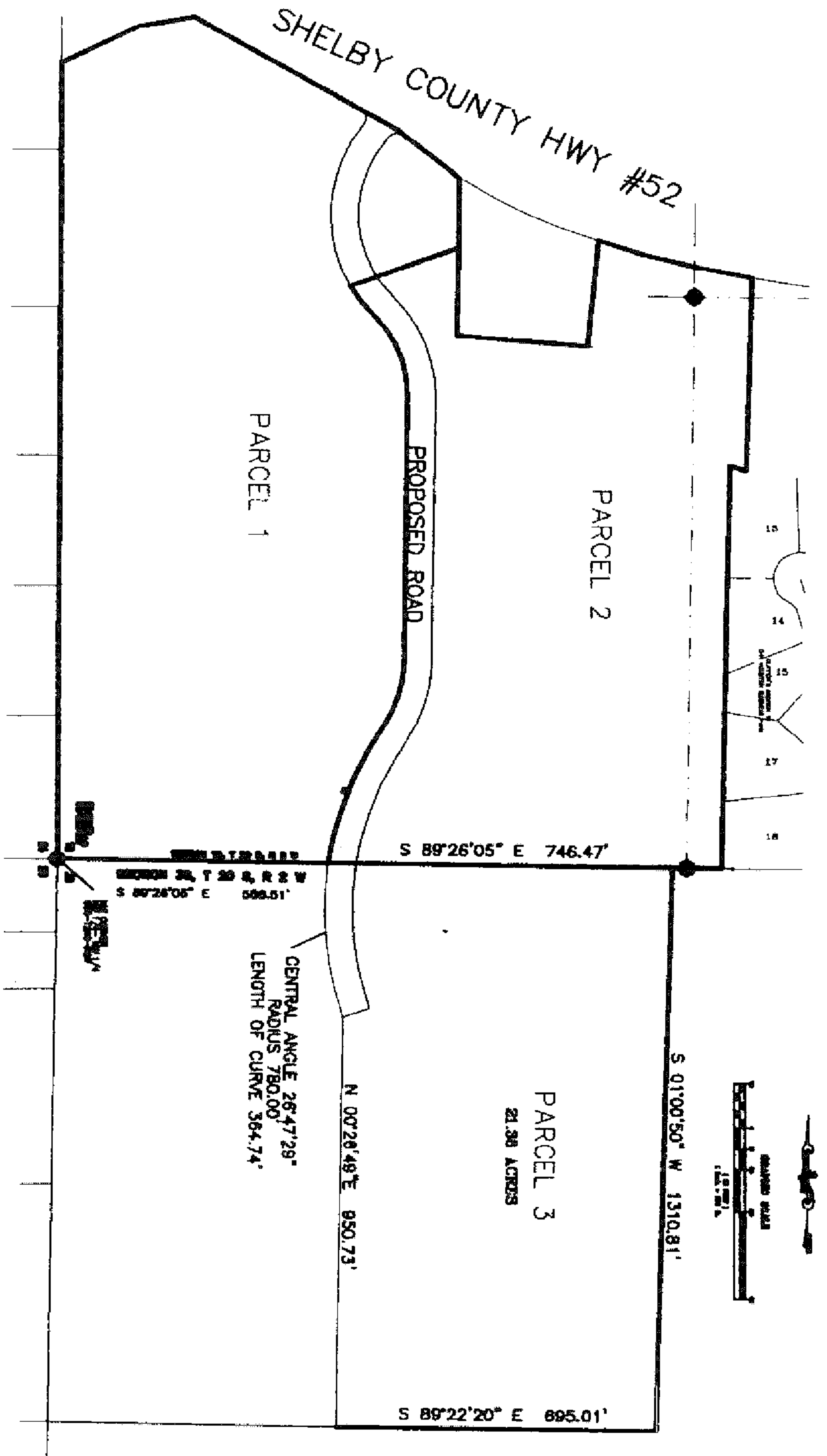
Said parcel containing 23.00 acres more or less.

PARCEL 1

Part of the SW 1/4 of Section 19, Township 20 South, Range 2 West, Shelby County, Alabama, and being more particularly described as follows:

Begin at the SW corner of the SW 1/4 of the SW 1/4 of said Section 19; thence N 00°19'06" W a distance of 1837.23'; thence N 62°57'28" E a distance of 187.42'; thence N 80°26'41" E a distance of 122.46' to the southerly R.O.W. line of Shelby County Hwy #52; thence S 60°03'21" E, along said R.O.W., a distance of 506.78'; thence S 52°05'42" E, along said R.O.W., a distance of 171.75'; thence leaving said R.O.W., S 00°05'23" W a distance of 161.98'; thence S 68°44'35" W a distance of 249.16'; thence with a curve turning to the left with an arc length of 81.74', with a radius of 330.00', with a chord bearing of S 37°20'27" E, with a chord length of 81.53', thence with a curve turning to the right with an arc length of 209.83', with a radius of 270.00', with a chord bearing of S 22°10'25" E, with a chord length of 204.59', thence S 00°05'23" W a distance of 622.22'; thence with a curve turning to the right with an arc length of 153.46', with a radius of 270.00', with a chord bearing of S 16°22'20" W, with a chord length of 151.40', thence with a curve turning to the left with an arc length of 339.33', with a radius of 780.00', with a chord bearing of S 20°11'30" W, with a chord length of 336.66', thence N 89°26'05" W a distance of 586.51' to the Point of Beginning.

Said parcel containing 31.18 acres more or less.



PARCEL 3

Part of the NW 1/4 of the NW 1/4 of Section 30, Township 20 South, Range 2 West, Shelby County, Alabama, and being more particularly described as follows:

Commence at the northwest corner of Section 30, Township 20 South, Range 2 West and thence run South 89°26'05" East for 586.51 feet to the point of beginning of the parcel herein described; thence continue South 89°26'05" East for 746.47 feet; thence run South 01°00'50" West for 1310.81 feet; thence run South 89°22'20" East for 695.01 feet; thence run North 00°26'49" East for 950.73 feet to the point of beginning of a curve to right, having a radius of 780.00 feet and a central angle of 26°47'29"; thence run northwesterly along said curve for 364.74 feet to the point of beginning.

Said parcel containing 21.38 acres more or less.

Chairman, Pelham Planning Commission

Date: 9-23-08

By: Anna Freslan
City Clerk, City of Pelham

Date: 9-23-08

By: Bobby Hayes
Mayor, City of Pelham

Date: 9-23-08

By: K. K. Kellen
City of Pelham Public Works Director

Date: 9-23-08

RESURVEY OF LOTS 1, 2, 3, 4, 5, 7 AND 8 PELHAM TOWN CENTER

BEING A RESURVEY OF PELHAM TOWN CENTER, AS
RECORDED IN MAP MAP 39, PAGE 69, IN THE OFFICE OF
THE JUDGE OF PROBATE, SHELBY COUNTY, ALABAMA,
A COMMERCIAL SUBDIVISION
ALL SITUATED IN SECTION 19, TOWNSHIP 20 SOUTH,
RANGE 2 WEST SHELBY COUNTY, ALABAMA

Prepared by:


GONZALEZ - STRENGTH & ASSOCIATES, INC.
ENGINEERING, LAND PLANNING, & SURVEYING
2176 PARKWAY LAKE DRIVE
HOOVER, ALABAMA 35244
PHONE: (205) 942-2486
FAX: (205) 942-3033
Gonzalez-Strength.com

© Copyright 2007

AUGUST 2008

JOB #25338



Filed and Recorded
Official Public Records
Judge of Probate, Shelby County Alabama, County
Clerk
Shelby County, AL
08/11/2021 01:42:08 PM
\$34.00 CHERRY
20210811000391500

Allen S. Byrd

Notary Public

My commission expires: