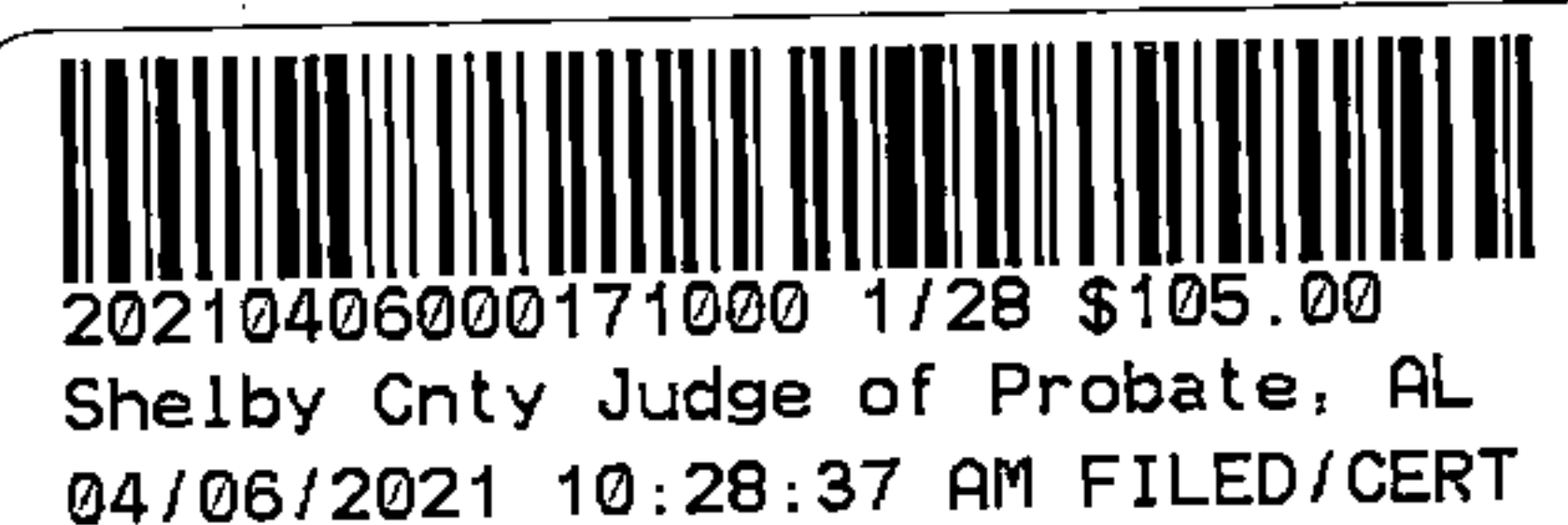


This instrument was prepared by:
Clayton T. Sweeney, Esquire
2700 Highway 280 East, Suite 160
Birmingham, Alabama 35223

Send Tax Notice to:
Eddleman Residential, LLC
2700 Hwy 280 Suite 425
Birmingham, AL 35223

STATE OF ALABAMA)
COUNTY OF SHELBY)



**CORRECTIVE
STATUTORY WARRANTY DEED**

KNOW ALL MEN BY THESE PRESENTS, that in consideration of Ten **and NO/100 Dollars (\$10.00)** to the undersigned grantor, **Eddleman Residential, LLC, an Alabama limited liability company** (herein referred to as "Grantor"), in hand paid by Grantee named herein, the receipt of which is hereby acknowledged, the said **Eddleman Residential, LLC, an Alabama limited liability company**, does by these presents, grant, bargain, sell and convey unto **Eddleman Residential, LLC, an Alabama limited liability company** (hereinafter referred to as "Grantee", whether one or more), the following described real estate (the "property"), situated in Shelby County, Alabama, to-wit:

See Exhibit "A" attached hereto and made a part hereof for legal description

This deed is given to correct the legal descriptions as described on Exhibit "A" to those certain deeds recorded in Instrument No. 20190325000094340 and Instrument No. 20190325000094350 and Instrument No. 202101405000167590, in which Eddleman Residential, LLC was the grantee.

This deed is executed as required by the Articles of Organization and Operational Agreement of said limited liability company and same have not been modified or amended.

The above property is conveyed subject to:

- (1) 2021 Ad Valorem taxes which have accrued but are not yet due and payable.
- (2) Transmission line permit to Alabama Power Company, as recorded in Deed Book 111, Page 270; Deed Book 241, Page 380; Deed Book 241, Page 403; Deed Book 241, Page 406 and Deed Book 242, Page 443, in the Probate Office of Shelby County, Alabama.
- (3) Right of Way to Shelby County, recorded in Deed Book 233, Page 606 and Deed Book 233, Page 609, in the Probate Office of Shelby County, Alabama.
- (4) Easement Agreement by and between The Young Men's Christian Association of Birmingham and Pine Mountain Preserve, LLLP, with reservations and restrictions included therein, recorded in Instrument 20140829000272700, in the Probate Office of Shelby County, Alabama.
- (5) Agreement between First Christian Church of Birmingham, Inc. and Estes H. and Florence Parker Hargis Charitable Foundation and Hargis Daffodil Hills Foundation recorded in Real Record 55, Page 966, in the Probate Office of Shelby County, Alabama.
- (6) Right of Way granted to Cahaba Girl Scout Council, Inc. as recorded in Deed Book 295, Page 45 and Deed Book 295, Page 48, in the Probate Office of Shelby County, Alabama.
- (7) Easement to Southern Bell Telephone and Telegraph Company recorded in Deed Book 320, Page 981 and Deed Book 343, Page 934, in the Probate Office of Shelby County, Alabama.
- (8) Assignment and Assumption of Settlement Decree dated 4-12-99, from First Christian Church of Birmingham, Inc. to The Young Men's Christian Association of Birmingham, filed for record 4-13-99, recorded in Instrument 1999-15749, in the Probate Office of Shelby County, Alabama.
- (9) Assignment of Trust Agreements dated 4-12-99, by First Christian Church of Birmingham, Inc. and The Young Men's Christian Association of Birmingham, filed for record 4-13-99, recorded in Instrument 1999-15741, in the Probate Office of Shelby County, Alabama.
- (10) Easement granted to Alabama Power Company, as recorded in Instrument 1996-4161, Instrument

2001-9989; Instrument 20040910000505360; Instrument 20131002000395680 and Instrument 20150219000053250, in the Probate Office of Shelby County, Alabama.

(11) Mineral and Mining rights not owned by Grantor

(12) Supplementary Declaration and Amendment to the Declaration of Easements, Covenants and Restrictions, Pine Mountain Preserve, a Natural Community, Pine Mountain Trail Sector, as recorded in Instrument 2021040100163200, in the Probate Office of Shelby County, Alabama.

(13) Easement Agreement between Pine Mountain Preserve, Inc. and Pine Mountain Association, Inc. as recorded in Instrument 20210401000163220, in the Probate Office of Shelby County, Alabama.

The Conservation Easement portions of Tracts 11-H and 12-H as attached hereto are subject to the following matters of record

(1) Title to all minerals within and underlying the premises, together with all mining rights and other rights, privileges and immunities relating thereto, including rights set out in Deed Book 244, page 587, Deed Book 330, page 621; Deed Book 336, page 4; Deed Book 336, page 6; Instrument 1997-03819; Instrument 1997-9552; Instrument 2000-04451; Instrument 2000-04453 and Corrected in Instrument 2001-21744; Instrument 20060221000084810; Instrument 20060221000084820, and corrected in Instrument 20081202000454670, in the Probate Office of Shelby County, Alabama.

(2) Any continuing liens affecting subject property which may be created by potential future assessments of the Pine Mountain Preserve Improvement District No. Seven. Such assessments constitute a super-priority lien on subject property pursuant to Chapter 99A of Title 11 of Code of Alabama 1975 (the "Alabama Improvement District Act").

(3) Articles of Incorporation of Pine Mountain Preserve Improvement District No. Seven as recorded in Instrument 20070319000124280, in the Probate Office of Shelby County, Alabama.

(4) Terms and Condition of Conservation Easement and Declaration of Restrictions and Covenants and Notice of Conveyance by and between Pine Mountain Preserve, LLLP d/b/a Pine Mountain Preserve, LLP and North American Land Trust, as set out in Instrument 20051228000666520, in the Probate Office of Shelby County, Alabama.

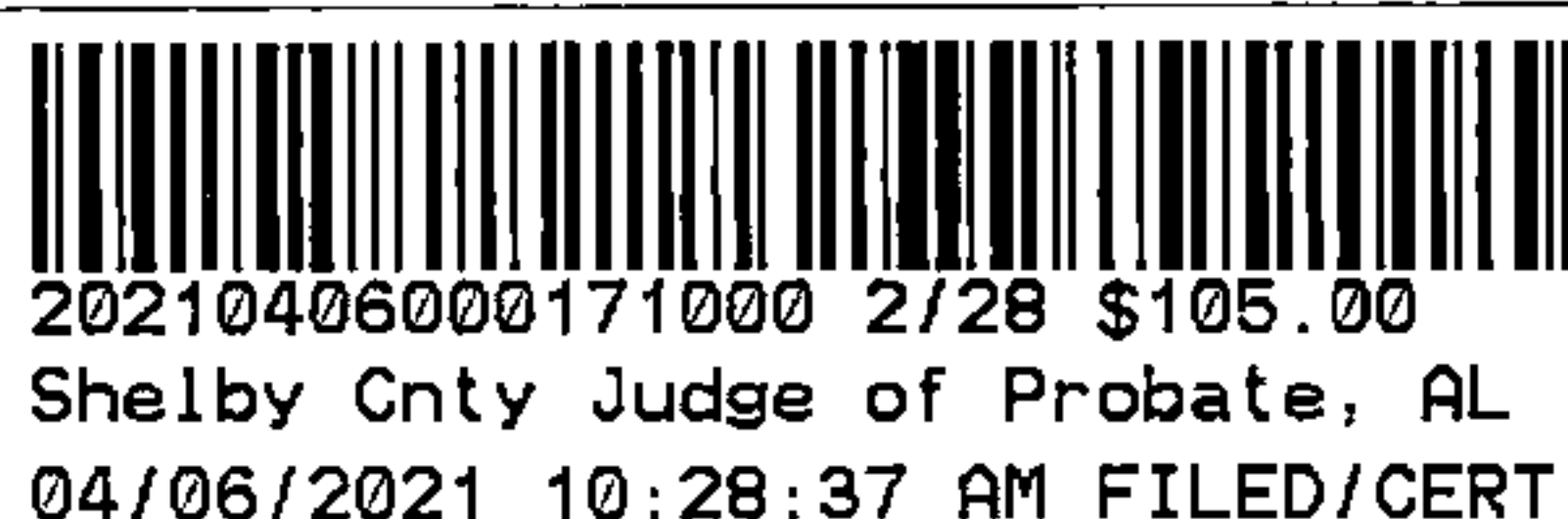
(5) Easement granted to Alabama Power Company recorded in Instrument 20131002000395690, in the Probate Office of Shelby County, Alabama.

(6) Rights of others in and to that certain Easement Agreement by and between The Young Men's Christian Association of Birmingham and Pine Mountain Preserve, LLLP, with reservations and restrictions included therein, recorded in Instrument 20140829000272700, in the Probate Office of Shelby County, Alabama.

(7) Declaration of Easements, Covenants and Restrictions for Pine Mountain Preserve, a Natural Community as recorded in Instrument 20151228000440560, in the Probate Office of Shelby County, Alabama.

(8) Terms and Conditions of Certificate of Formation of Pine Mountain Preserve Association Inc., as recorded in Book LR201515, page 20421, in the Probate Office of Shelby County, Alabama.

This conveyance is made with the express reservation and condition that the Grantee, by itself and on behalf of its successors, assigns, contractor, permittees, licensees and lessees, hereby releases and forever discharges Grantor, its successors and assigns, from any and all liability claims and causes of actions whether arising at law, (by contract or tort) or in equity with respect to damage or destruction of property and injury to or death of any person located in, on, or under the surface of or over property herein conveyed, as the case may be, which are caused by, or arise as a result of, past or future soil, subsoil or other conditions (including without limitation, sinkholes, underground mines, and limestone formations) under or on the subject property, whether contiguous or non-contiguous. Grantee acknowledges that it has made its own independent inspections and investigations of the subject property and is purchasing the property in reliance thereof. For purposes of this paragraph, Grantor shall mean and refer to Pine Mountain Preserve,



Inc., and (i) its partners, employees and officers and members of each of them and (ii) any successors and assigns of Pine Mountain Preserve, Inc., Eddleman Lands, LLC and Eddleman Residential, LLC.

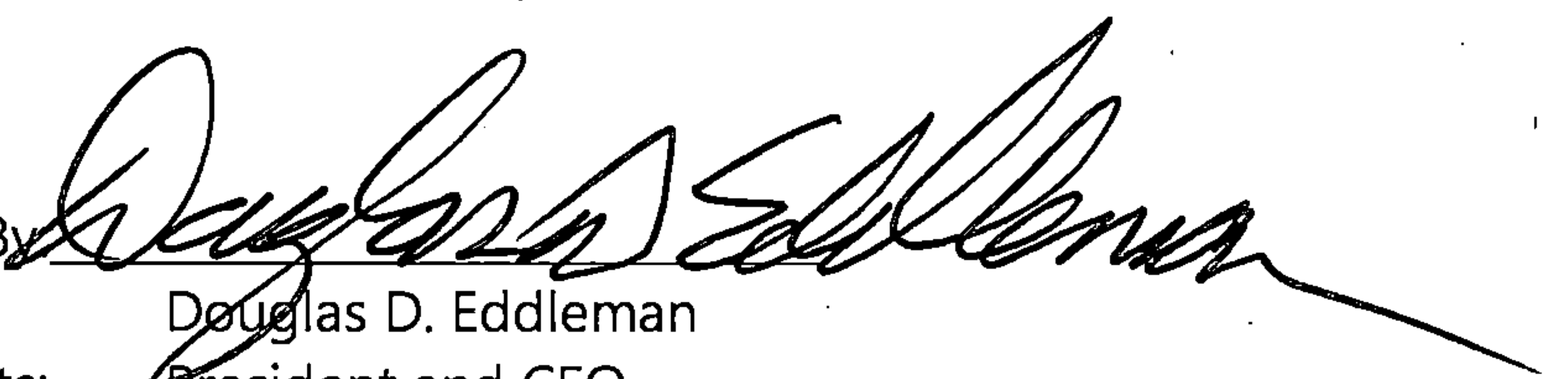
The preparer of this instrument makes no representation as to the status of the title conveyed herein. Legal Descriptions provided by Grantor.

TO HAVE AND TO HOLD to the said Grantee, its successors and assigns, forever.

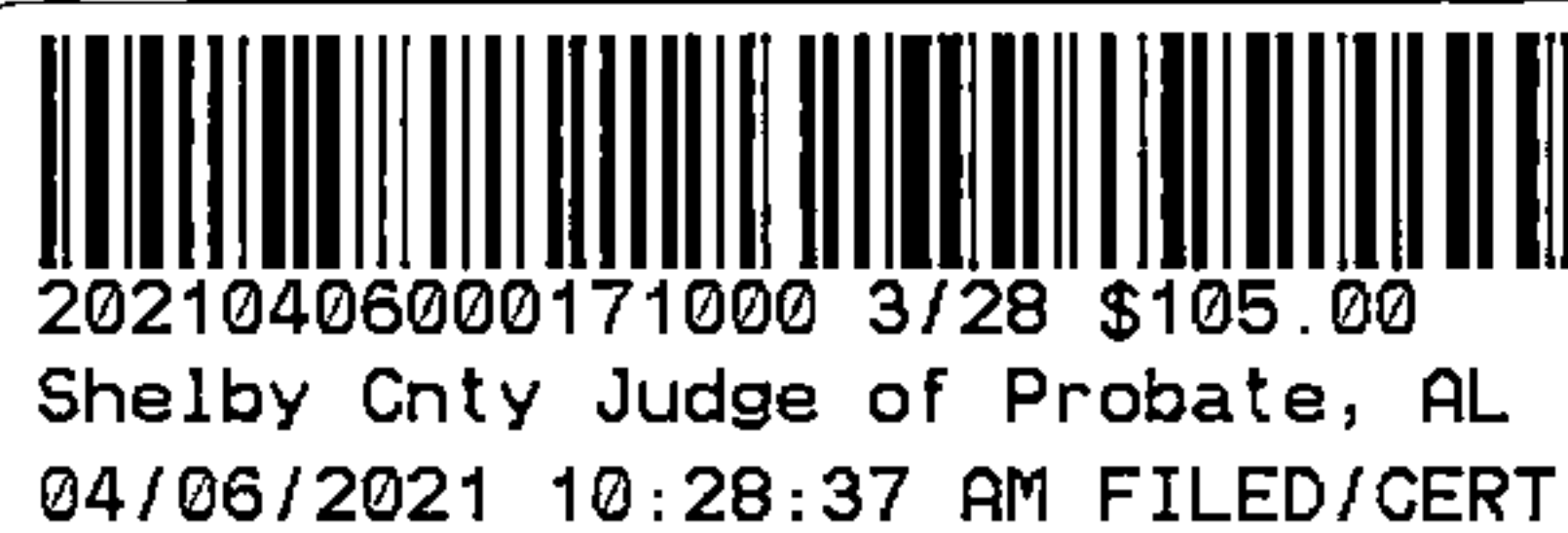
IN WITNESS WHEREOF, the said Grantor has hereunto set its hand by its duly authorized representative this 6th day of April, 2021.

GRANTOR:

Eddleman Residential, LLC
an Alabama limited liability company

By: 
Douglas D. Eddleman
Its: President and CEO

STATE OF ALABAMA)
JEFFERSON COUNTY)

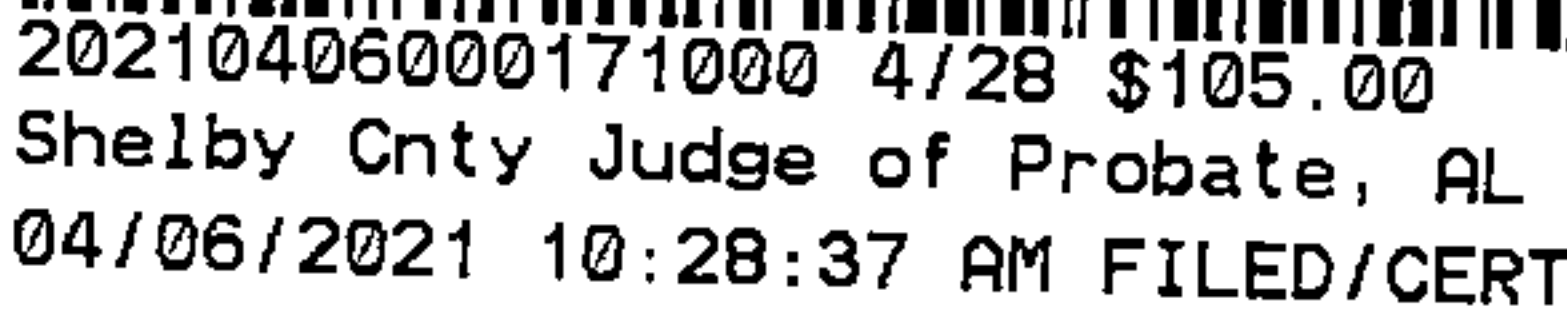


I, the undersigned, a Notary Public in and for said County in said State hereby certify that Douglas D. Eddleman, whose name as President and CEO of Eddleman Residential, LLC an Alabama limited liability company, is signed to the foregoing Deed, and who is known to me, acknowledged before me on this day that, being informed of the contents of the above and foregoing Deed, he, as officer, and with full authority, executed the same voluntarily for and as the act of said limited liability company.

Given under my hand and official seal of office this the 6th day of April, 2021.


NOTARY PUBLIC
My Commission Expires: 06/02/2023





DESCRIPTION OF TRACT 1-1:

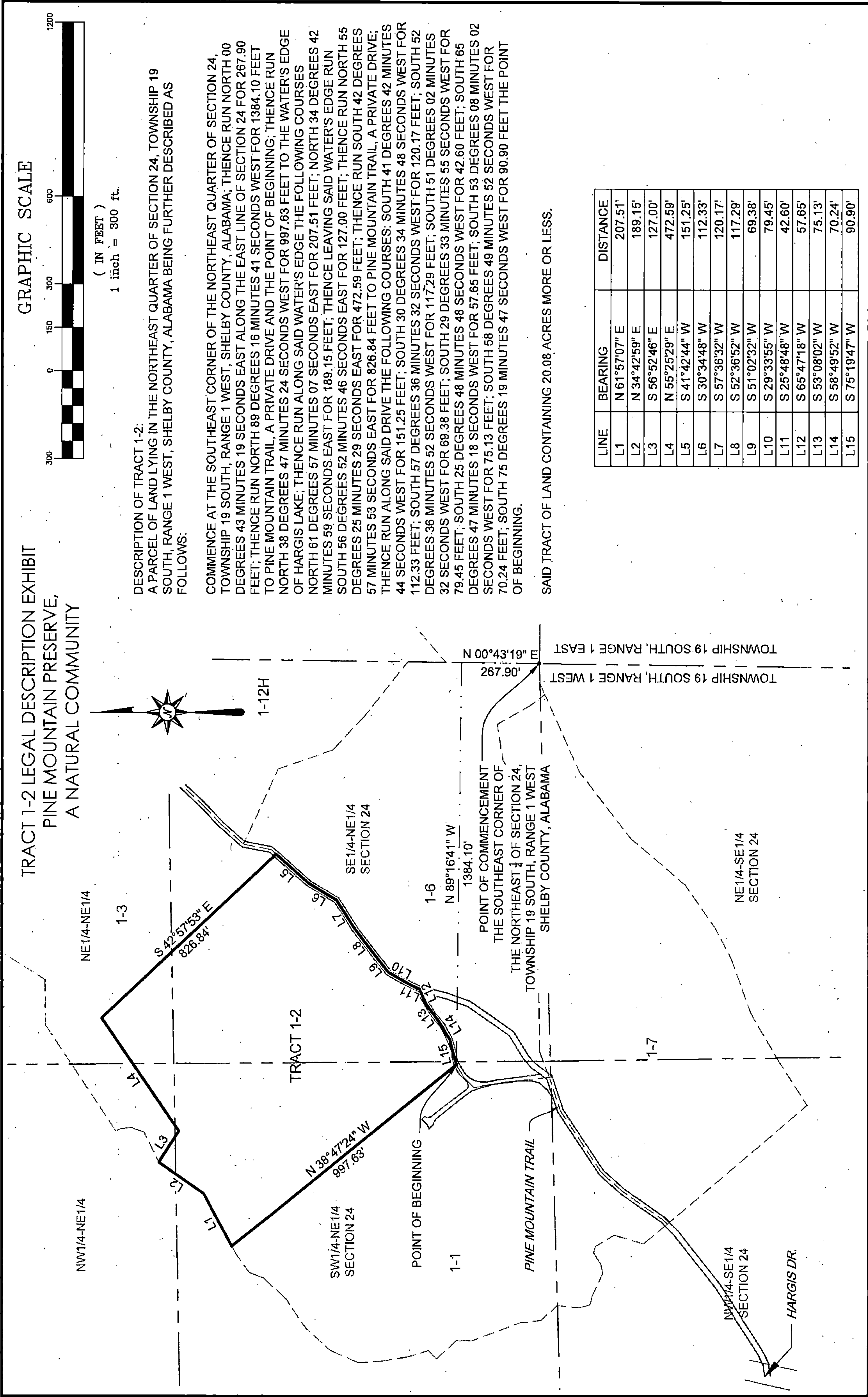
A PARCEL OF LAND LYING IN THE SOUTHWEST QUARTER OF THE NORTHEAST QUARTER AND THE NORTHWEST QUARTER OF THE SOUTHEAST QUARTER OF SECTION 24, TOWNSHIP 19 SOUTH, RANGE 1 WEST, SHELBY COUNTY, ALABAMA BEING FURTHER DESCRIBED AS FOLLOWS:

COMMENCE AT THE SOUTHEAST CORNER OF THE NORTHEAST QUARTER OF SECTION 24, TOWNSHIP 19 SOUTH, RANGE 1 WEST, SHELBY COUNTY, ALABAMA THENCE RUN NORTH 00 DEGREES 43 MINUTES 19 SECONDS EAST ALONG THE EAST LINE OF SECTION 24 FOR 267.90 FEET; THENCE RUN NORTH 89 DEGREES 16 MINUTES 41 SECONDS WEST FOR 1384.10 FEET TO PINE MOUNTAIN TRAIL, A PRIVATE DRIVE AND THE POINT OF BEGINNING; THENCE RUN SOUTH 58 DEGREES 30 MINUTES 12 SECONDS WEST ALONG PINE MOUNTAIN TRAIL, A PRIVATE DRIVE FOR 50.61 FEET; THENCE RUN ALONG SAID PRIVATE DRIVE THE FOLLOWING COURSES: SOUTH 45 DEGREES 42 MINUTES 44 SECONDS WEST FOR 50.04 FEET; SOUTH 11 DEGREES 28 MINUTES 14 SECONDS EAST FOR 41.87 FEET; SOUTH 09 DEGREES 39 MINUTES 54 SECONDS EAST FOR 68.70 FEET; SOUTH 06 DEGREES 05 MINUTES 22 SECONDS EAST FOR 151.49 FEET; SOUTH 71 DEGREES 31 MINUTES 29 SECONDS WEST FOR 121.76 FEET; SOUTH 56 DEGREES 09 MINUTES 57 SECONDS WEST FOR 254.54 FEET; SOUTH 41 DEGREES 33 MINUTES 50 SECONDS WEST FOR 97.19 FEET; SOUTH 34 DEGREES 53 MINUTES 14 SECONDS WEST FOR 167.14 FEET; SOUTH 45 DEGREES 50 MINUTES 38 SECONDS WEST FOR 24.21 FEET; THENCE LEAVE SAID PRIVATE DRIVE AND RUN NORTH 40 DEGREES 10 MINUTES 28 SECONDS WEST FOR 107.43 FEET; THENCE RUN NORTH 16 DEGREES 58 MINUTES 37 SECONDS EAST FOR 104.66 FEET TO A POINT IN THE CENTER OF LITTLE CREEK; THENCE RUN ALONG SAID CREEK THE FOLLOWING COURSES: NORTH 31 DEGREES 35 MINUTES 52 SECONDS WEST FOR 76.78 FEET; NORTH 71 DEGREES 54 MINUTES 16 SECONDS WEST FOR 22.57 FEET; SOUTH 57 DEGREES 02 MINUTES 24 SECONDS WEST FOR 44.89 FEET; SOUTH 77 DEGREES 00 MINUTES 59 SECONDS WEST FOR 34.71 FEET; NORTH 65 DEGREES 04 MINUTES 57 SECONDS WEST FOR 86.64 FEET; NORTH 76 DEGREES 12 MINUTES 44 SECONDS WEST FOR 31.14 FEET; NORTH 16 DEGREES 31 MINUTES 41 SECONDS WEST FOR 35.51 FEET; NORTH 05 DEGREES 05 MINUTES 22 SECONDS EAST FOR 78.33 FEET; NORTH 41 DEGREES 48 MINUTES 57 SECONDS WEST FOR 76.72 FEET; NORTH 06 DEGREES 22 MINUTES 34 SECONDS WEST FOR 72.21 FEET; NORTH 20 DEGREES 47 MINUTES 44 SECONDS WEST FOR 175.74 FEET; NORTH 00 DEGREES 28 MINUTES 28 SECONDS EAST FOR 54.30 FEET; NORTH 42 DEGREES 18 MINUTES 14 SECONDS WEST FOR 93.87 FEET TO THE END OF SAID CREEK; THENCE LEAVING SAID CREEK RUN NORTH 46 DEGREES 13 MINUTES 41 SECONDS EAST FOR 38.74 FEET TO THE WATER'S EDGE OF HARGIS LAKE; THENCE RUN ALONG SAID WATER'S EDGE THE FOLLOWING COURSES: NORTH 18 DEGREES 45 MINUTES 29 SECONDS WEST FOR 59.50 FEET; NORTH 09 DEGREES 04 MINUTES 02 SECONDS WEST FOR 108.27 FEET; NORTH 04 DEGREES 00 MINUTES 28 SECONDS WEST FOR 79.01 FEET; NORTH 23 DEGREES 24 MINUTES 46 SECONDS EAST FOR 108.24 FEET; NORTH 42 DEGREES 19 MINUTES 32 SECONDS EAST FOR 117.64 FEET; NORTH 56 DEGREES 04 MINUTES 35 SECONDS EAST FOR 120.99 FEET; NORTH 42 DEGREES 24 MINUTES 09 SECONDS EAST FOR 106.58 FEET; NORTH 21 DEGREES 15 MINUTES 44 SECONDS EAST FOR 52.27 FEET; NORTH 54 DEGREES 50 MINUTES 02 SECONDS EAST FOR 80.34 FEET; NORTH 61 DEGREES 31 MINUTES 42 SECONDS EAST FOR 28.72 FEET; THENCE LEAVING SAID WATER'S EDGE RUN SOUTH 38 DEGREES 47 MINUTES 24 SECONDS EAST FOR 997.63 FEET TO PINE MOUNTAIN TRAIL, A PRIVATE DRIVE AND THE POINT OF BEGINNING.

SAID TRACT OF LAND CONTAINING 20.30 ACRES MORE OR LESS.



20210406000171000 5/28 \$105.00
Shelby Cnty Judge of Probate, AL
04/06/2021 10:28:37 AM FILED/CERT



20210406000171000 6/28 \$105.00
Shelby Cnty Judge of Probate, AL
04/06/2021 10:28:37 AM FILED/CERT

DESCRIPTION OF TRACT 1-2:

A PARCEL OF LAND LYING IN THE NORTHEAST QUARTER OF SECTION 24, TOWNSHIP 19 SOUTH, RANGE 1 WEST, SHELBY COUNTY, ALABAMA BEING FURTHER DESCRIBED AS FOLLOWS:

COMMENCE AT THE SOUTHEAST CORNER OF THE NORTHEAST QUARTER OF SECTION 24, TOWNSHIP 19 SOUTH, RANGE 1 WEST, SHELBY COUNTY, ALABAMA; THENCE RUN NORTH 00 DEGREES 43 MINUTES 19 SECONDS EAST ALONG THE EAST LINE OF SECTION 24 FOR 267.90 FEET; THENCE RUN NORTH 89 DEGREES 16 MINUTES 41 SECONDS WEST FOR 1384.10 FEET TO PINE MOUNTAIN TRAIL, A PRIVATE DRIVE AND THE POINT OF BEGINNING; THENCE RUN NORTH 38 DEGREES 47 MINUTES 24 SECONDS WEST FOR 997.63 FEET TO THE WATER'S EDGE OF HARGIS LAKE; THENCE RUN ALONG SAID WATER'S EDGE THE FOLLOWING COURSES NORTH 61 DEGREES 57 MINUTES 07 SECONDS EAST FOR 207.51 FEET; NORTH 34 DEGREES 42 MINUTES 59 SECONDS EAST FOR 189.15 FEET; THENCE LEAVING SAID WATER'S EDGE RUN SOUTH 56 DEGREES 52 MINUTES 46 SECONDS EAST FOR 127.00 FEET; THENCE RUN NORTH 55 DEGREES 25 MINUTES 29 SECONDS EAST FOR 472.59 FEET; THENCE RUN SOUTH 42 DEGREES 57 MINUTES 53 SECONDS EAST FOR 826.84 FEET TO PINE MOUNTAIN TRAIL, A PRIVATE DRIVE; THENCE RUN ALONG SAID DRIVE THE FOLLOWING COURSES: SOUTH 41 DEGREES 42 MINUTES 44 SECONDS WEST FOR 151.25 FEET; SOUTH 30 DEGREES 34 MINUTES 48 SECONDS WEST FOR 112.33 FEET; SOUTH 57 DEGREES 36 MINUTES 32 SECONDS WEST FOR 120.17 FEET; SOUTH 52 DEGREES 36 MINUTES 52 SECONDS WEST FOR 117.29 FEET; SOUTH 51 DEGREES 02 MINUTES 32 SECONDS WEST FOR 69.38 FEET; SOUTH 29 DEGREES 33 MINUTES 55 SECONDS WEST FOR 79.45 FEET; SOUTH 25 DEGREES 48 MINUTES 48 SECONDS WEST FOR 42.60 FEET; SOUTH 65 DEGREES 47 MINUTES 18 SECONDS WEST FOR 57.65 FEET; SOUTH 53 DEGREES 08 MINUTES 02 SECONDS WEST FOR 75.13 FEET; SOUTH 58 DEGREES 49 MINUTES 52 SECONDS WEST FOR 70.24 FEET; SOUTH 75 DEGREES 19 MINUTES 47 SECONDS WEST FOR 90.90 FEET THE POINT OF BEGINNING.

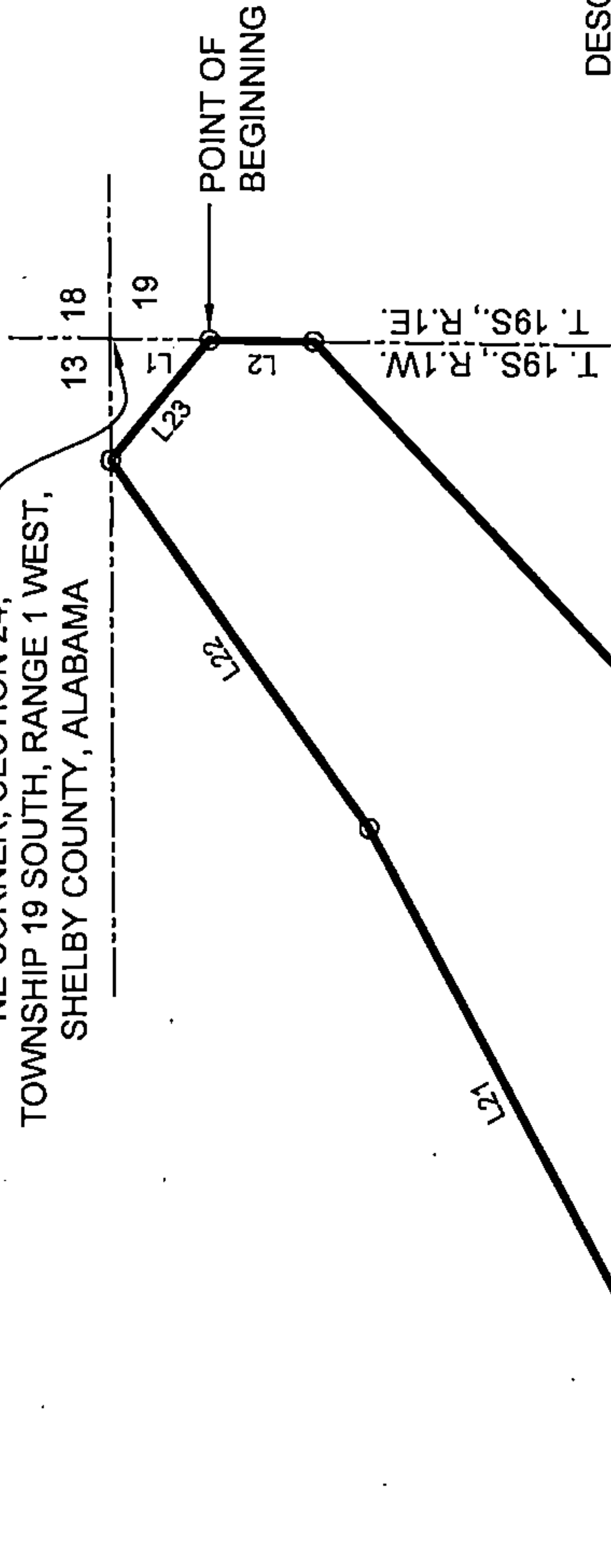
SAID TRACT OF LAND CONTAINING 20.08 ACRES MORE OR LESS.



20210406000171000 7/28 \$105.00
Shelby Cnty Judge of Probate, AL
04/06/2021 10:28:37 AM FILED/CERT

LINE TABLE		
LINE	BEARING	DISTANCE
L1	S 00°43'19" W	84.00'
L2	S 00°43'19" W	87.35'
L3	S 46°43'21" W	936.67'
L4	S 38°50'27" E	564.14'
L5	S 44°58'31" W	141.15'
L6	S 43°19'31" W	137.94'
L7	S 46°51'45" W	78.64'
L8	S 41°27'50" W	108.83'
L9	S 10°52'36" W	97.09'
L10	S 41°42'44" W	24.27'
L11	N 42°57'53" W	826.84'
L12	S 55°25'29" W	472.59'
L13	N 56°52'46" W	127.00'
L14	N 63°20'32" E	115.09'
L15	N 19°59'08" E	45.34'
L16	N 06°12'53" W	37.01'
L17	N 20°00'00" W	20.00'
L18	N 56°06'12" E	438.87'
L19	N 89°17'37" E	155.71'
L20	N 31°45'34" E	523.96'
L21	N 61°42'19" E	496.83'
L22	N 54°36'08" E	375.06'
L23	S 50°16'30" E	130.14'

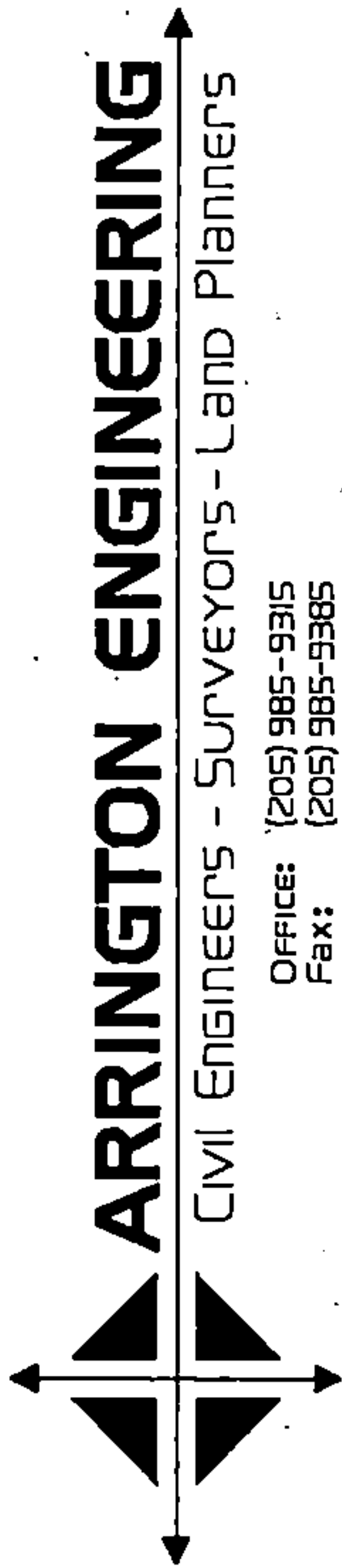
POINT OF COMMENCEMENT
NE CORNER, SECTION 24,
TOWNSHIP 19 SOUTH, RANGE 1 WEST,
SHELBY COUNTY, ALABAMA



DESCRIPTION: TRACT 3

COMMENCE AT THE NORTHEAST CORNER OF SECTION 24, TOWNSHIP 19 SOUTH, RANGE 1 WEST, SHELBY COUNTY, ALABAMA; THENCE RUN SOUTH 00 DEGREES 43 MINUTES 19 SECONDS WEST ALONG THE EAST LINE OF SAID SECTION 24 FOR 84.00 FEET TO THE POINT OF BEGINNING; THENCE CONTINUE SOUTH 00 DEGREES 43 MINUTES 19 SECONDS WEST FOR 87.35 FEET; THENCE RUN SOUTH 46 DEGREES 43 MINUTES 21 SECONDS WEST FOR 936.67 FEET; THENCE RUN SOUTH 38 DEGREES 50 MINUTES 27 SECONDS EAST FOR 564.14 FEET; THENCE RUN SOUTH 44 DEGREES 58 MINUTES 31 SECONDS WEST FOR 141.15 FEET; THENCE RUN SOUTH 43 DEGREES 19 MINUTES 31 SECONDS WEST FOR 137.94 FEET; THENCE RUN SOUTH 46 DEGREES 51 MINUTES 45 SECONDS WEST FOR 78.64 FEET; THENCE RUN SOUTH 41 DEGREES 27 MINUTES 50 SECONDS WEST FOR 108.83 FEET; THENCE RUN SOUTH 10 DEGREES 52 MINUTES 36 SECONDS WEST FOR 97.09 FEET; THENCE RUN SOUTH 41 DEGREES 42 MINUTES 44 SECONDS WEST FOR 24.27 FEET; THENCE RUN SOUTH 42 DEGREES 57 MINUTES 53 SECONDS WEST FOR 826.84 FEET; THENCE RUN SOUTH 55 DEGREES 25 MINUTES 29 SECONDS WEST FOR 472.59 FEET; THENCE RUN NORTH 56 DEGREES 52 MINUTES 46 SECONDS WEST FOR 127.00 FEET; THENCE RUN NORTH 63 DEGREES 20 MINUTES 32 SECONDS EAST FOR 115.09 FEET; THENCE RUN NORTH 19 DEGREES 59 MINUTES 08 SECONDS EAST FOR 45.34 FEET; THENCE RUN NORTH 06 DEGREES 12 MINUTES 53 SECONDS WEST FOR 37.01 FEET; THENCE RUN NORTH 20 DEGREES 00 MINUTES 00 SECONDS WEST FOR 20.00 FEET; THENCE RUN NORTH 56 DEGREES 06 MINUTES 12 SECONDS EAST FOR 438.87 FEET; THENCE RUN NORTH 89 DEGREES 17 MINUTES 37 SECONDS EAST FOR 155.71 FEET; THENCE RUN NORTH 31 DEGREES 45 MINUTES 34 SECONDS EAST FOR 523.96 FEET; THENCE RUN NORTH 61 DEGREES 42 MINUTES 19 SECONDS EAST FOR 496.83 FEET; THENCE RUN NORTH 54 DEGREES 36 MINUTES 08 SECONDS EAST FOR 375.06 FEET; THENCE RUN SOUTH 50 DEGREES 16 MINUTES 30 SECONDS EAST FOR 130.14 FEET TO THE POINT OF BEGINNING.

SAID TRACT OF LAND CONTAINING 874,933.12 S.F. OR 20.09 ACRES MORE OR LESS.



Office: (205) 985-9315
Fax: (205) 985-9385
2032 Valleydale Road
Birmingham AL 35244



20210406000171000 8/28 \$105.00
Shelby Cnty Judge of Probate, AL
04/06/2021 10:28:37 AM FILED/CERT



20210406000171000 9/28 \$105.00
Shelby Cnty Judge of Probate, AL
04/06/2021 10:28:37 AM FILED/CERT

DESCRIPTION OF TRACT 3

COMMENCE AT THE NORTHEAST CORNER OF SECTION 24, TOWNSHIP 19 SOUTH, RANGE 1 WEST, SHELBY COUNTY, ALABAMA; THENCE RUN SOUTH 00 DEGREES 43 MINUTES 19 SECONDS WEST ALONG THE EAST LINE OF SAID SECTION 24 FOR 84.00 FEET TO THE POINT OF BEGINNING; THENCE CONTINUE SOUTH 00 DEGREES 43 MINUTES 19 SECONDS WEST FOR 87.35 FEET; THENCE RUN SOUTH 46 DEGREES 43 MINUTES 21 SECONDS WEST FOR 936.67 FEET; THENCE RUN SOUTH 38 DEGREES 50 MINUTES 27 SECONDS EAST FOR 564.14 FEET; THENCE RUN SOUTH 44 DEGREES 58 MINUTES 31 SECONDS WEST FOR 141.15 FEET; THENCE RUN SOUTH 43 DEGREES 19 MINUTES 31 SECONDS WEST FOR 137.94 FEET; THENCE RUN SOUTH 46 DEGREES 51 MINUTES 45 SECONDS WEST FOR 78.64 FEET; THENCE RUN SOUTH 41 DEGREES 27 MINUTES 50 SECONDS WEST FOR 108.83 FEET; THENCE RUN SOUTH 10 DEGREES 52 MINUTES 36 SECONDS WEST FOR 97.09 FEET; THENCE RUN SOUTH 41 DEGREES 42 MINUTES 44 SECONDS WEST FOR 24.27 FEET; THENCE RUN NORTH 42 DEGREES 57 MINUTES 53 SECONDS WEST FOR 826.84 FEET; THENCE RUN SOUTH 55 DEGREES 25 MINUTES 29 SECONDS WEST FOR 472.59 FEET; THENCE RUN NORTH 56 DEGREES 52 MINUTES 46 SECONDS WEST FOR 127.00 FEET; THENCE RUN NORTH 63 DEGREES 20 MINUTES 32 SECONDS EAST FOR 115.09 FEET; THENCE RUN NORTH 19 DEGREES 59 MINUTES 08 SECONDS EAST FOR 45.34 FEET; THENCE RUN NORTH 06 DEGREES 12 MINUTES 53 SECONDS WEST FOR 37.01 FEET; THENCE RUN NORTH 20 DEGREES 00 MINUTES 00 SECONDS WEST FOR 20.00 FEET; THENCE RUN NORTH 56 DEGREES 06 MINUTES 12 SECONDS EAST FOR 438.87 FEET; THENCE RUN NORTH 89 DEGREES 17 MINUTES 37 SECONDS EAST FOR 155.71 FEET; THENCE RUN NORTH 31 DEGREES 45 MINUTES 34 SECONDS EAST FOR 523.96 FEET; THENCE RUN NORTH 61 DEGREES 42 MINUTES 19 SECONDS EAST FOR 496.83 FEET; THENCE RUN NORTH 54 DEGREES 36 MINUTES 08 SECONDS EAST FOR 375.06 FEET; THENCE RUN SOUTH 50 DEGREES 16 MINUTES 30 SECONDS EAST FOR 130.14 FEET TO THE POINT OF BEGINNING. SAID TRACT OF LAND CONTAINING 874,933.12 S.F. OR 20.09 ACRES MORE OR LESS.

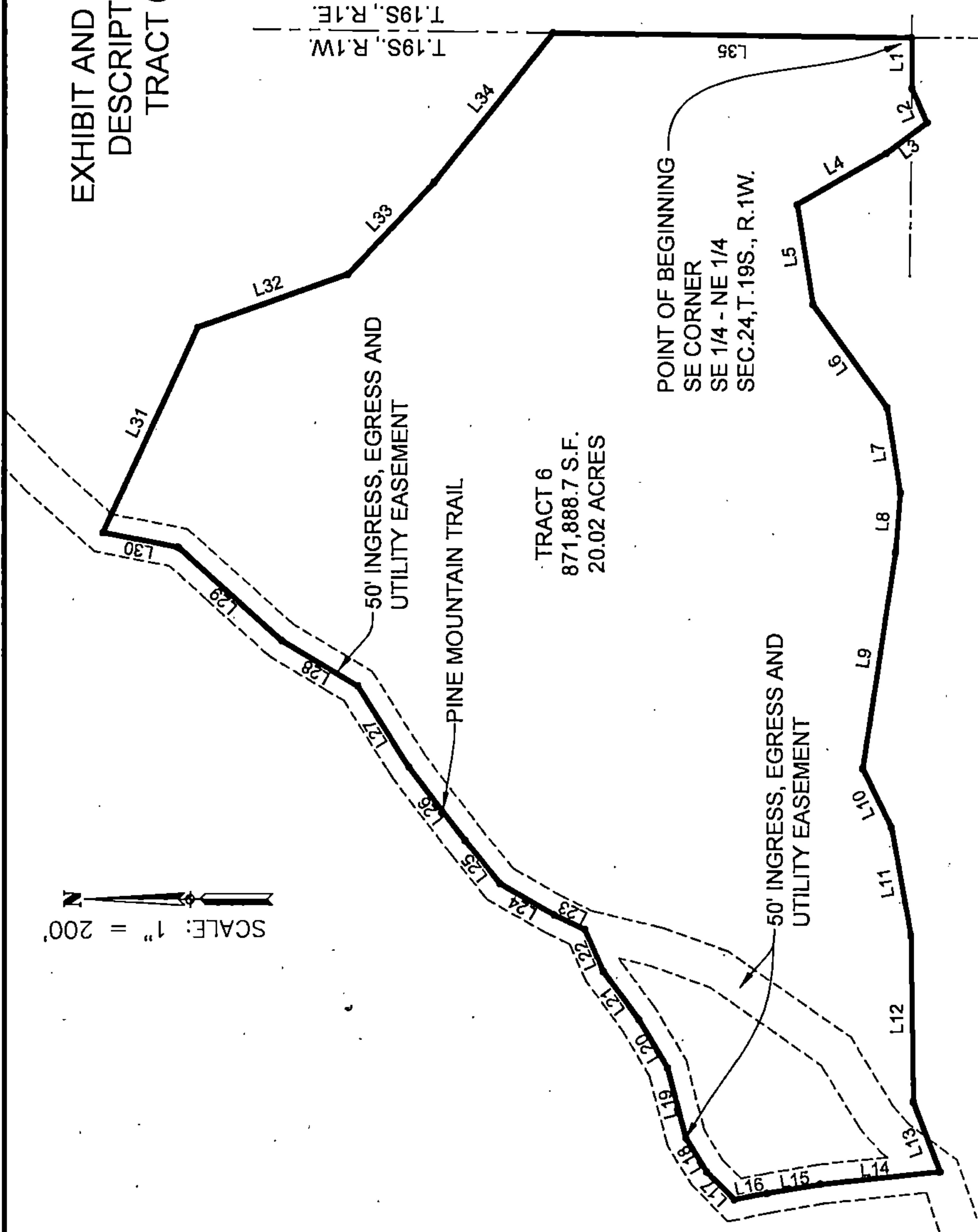
DESCRIPTION: TRACT 6

BEGIN AT THE SOUTHEAST CORNER OF THE SOUTHEAST QUARTER OF THE NORTHEAST QUARTER OF SECTION 24, TOWNSHIP 19 SOUTH, RANGE 1 WEST; THENCE RUN SOUTH 89 DEGREES 47 MINUTES 00 SECONDS WEST ALONG THE SOUTH LINE OF SAID 1/4 - 1/4 SECTION FOR 63.82 FEET; THENCE RUN SOUTH 65 DEGREES 48 MINUTES 02 SECONDS WEST FOR 46.65 FEET; THENCE RUN NORTH 37 DEGREES 17 MINUTES 11 SECONDS WEST FOR 64.82 FEET; THENCE RUN NORTH 29 DEGREES 44 MINUTES 08 SECONDS WEST FOR 126.31 FEET; THENCE RUN SOUTH 54 DEGREES 11 MINUTES 07 SECONDS WEST FOR 159.46 FEET; THENCE RUN SOUTH 81 DEGREES 13 MINUTES 30 SECONDS WEST FOR 108.52 FEET; THENCE RUN NORTH 85 DEGREES 34 MINUTES 12 SECONDS WEST FOR 75.93 FEET; THENCE RUN NORTH 81 DEGREES 19 MINUTES 39 SECONDS WEST FOR 273.98 FEET; THENCE RUN SOUTH 64 DEGREES 07 MINUTES 51 SECONDS WEST FOR 81.89 FEET; THENCE RUN SOUTH 79 DEGREES 43 MINUTES 00 SECONDS WEST FOR 138.61 FEET; THENCE RUN SOUTH 89 DEGREES 09 MINUTES 08 SECONDS WEST FOR 208.27 FEET; THENCE RUN SOUTH 69 DEGREES 05 MINUTES 39 SECONDS WEST FOR 93.94 FEET; THENCE RUN NORTH 45 DEGREES 42 MINUTES 44 SECONDS EAST FOR 50.04 FEET; THENCE RUN NORTH 58 DEGREES 30 MINUTES 12 SECONDS EAST FOR 50.61 FEET; THENCE RUN NORTH 75 DEGREES 19 MINUTES 47 SECONDS EAST FOR 90.90 FEET; THENCE RUN NORTH 51 DEGREES 02 MINUTES 32 SECONDS EAST FOR 69.38 FEET; THENCE RUN NORTH 57 DEGREES 36 MINUTES 52 SECONDS EAST FOR 117.29 FEET; THENCE RUN NORTH 30 DEGREES 34 MINUTES 48 SECONDS EAST FOR 120.17 FEET; THENCE RUN NORTH 41 DEGREES 42 MINUTES 44 SECONDS EAST FOR 175.52 FEET; THENCE RUN NORTH 10 DEGREES 52 MINUTES 36 SECONDS EAST FOR 97.09 FEET; THENCE RUN SOUTH 19 DEGREES 03 MINUTES 21 SECONDS EAST FOR 284.36 FEET; THENCE RUN SOUTH 46 DEGREES 13 MINUTES 52 SECONDS EAST FOR 201.72 FEET; THENCE RUN SOUTH 51 DEGREES 36 MINUTES 36 SECONDS EAST FOR 158.47 FEET; THENCE RUN SOUTH 51 DEGREES 16 MINUTES 27 SECONDS EAST FOR 240.38 FEET TO A POINT ON THE EAST LINE OF SAID 1/4 - 1/4 SECTION; THENCE RUN SOUTH 00 DEGREES 43 MINUTES 19 SECONDS WEST ALONG THE EAST LINE OF SAID 1/4 - 1/4 SECTION FOR 453.57 FEET TO THE POINT OF BEGINNING.

SAID TRACT OF LAND CONTAINING 871,888.69 S.F. OR 20.02 ACRES MORE OR LESS.

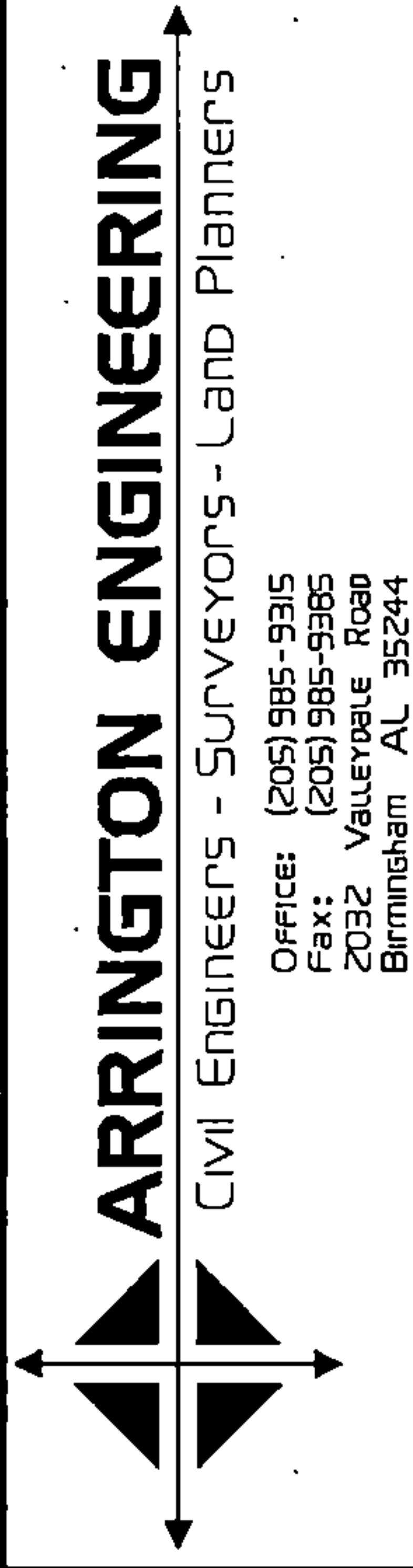


EXHIBIT AND LEGAL
DESCRIPTION
TRACT 6



LINE TABLE		
LINE	BEARING	DISTANCE
L1	S 89°47'00" W	63.82'
L2	S 65°48'02" W	46.65'
L3	N 37°17'11" W	64.82'
L4	N 29°44'08" W	129.36'
L5	S 80°46'33" W	126.31'
L6	S 54°11'07" W	159.46'
L7	S 81°13'30" W	108.52'
L8	N 85°34'12" W	75.93'
L9	N 81°19'39" W	273.98'
L10	S 64°07'51" W	81.89'
L11	S 79°43'00" W	138.61'
L12	S 89°09'08" W	208.27'
L13	S 69°05'39" W	93.94'
L14	N 06°05'22" W	151.49'
L15	N 09°39'54" W	68.70'
L16	N 11°28'14" W	41.87'
L17	N 45°42'44" E	50.04'
L18	N 58°30'12" E	50.61'
L19	N 75°19'47" E	90.90'
L20	N 58°49'52" E	70.24'
L21	N 53°08'02" E	75.13'
L22	N 65°47'18" E	57.65'
L23	N 25°48'48" E	42.60'
L24	N 29°33'55" E	79.45'
L25	N 51°02'32" E	69.38'
L26	N 52°36'52" E	117.29'
L27	N 57°36'32" E	120.17'
L28	N 30°34'48" E	112.33'
L29	N 41°42'44" E	175.52'
L30	N 10°52'36" E	97.09'
L31	S 65°03'21" E	284.36'
L32	S 19°13'52" E	201.72'
L33	S 46°36'36" E	158.47'
L34	S 51°16'27" E	240.38'
L35	S 00°43'19" W	453.57'

20210406000171000 10/28 \$105.00
Shelby Cnty Judge of Probate, AL
04/06/2021 10:28:37 AM FILED/CERT



ARRINGTON ENGINEERING
Civil Engineers - Surveyors - Land Planners

Office: (205) 985-9315
Fax: (205) 985-9385
2032 Valleydale Road
Birmingham AL 35244

DESCRIPTION OF TRACT 6

BEGIN AT THE SOUTHEAST CORNER OF THE SOUTHEAST QUARTER OF THE NORTHEAST QUARTER OF SECTION 24, TOWNSHIP 19 SOUTH, RANGE 1 WEST ; THENCE RUN SOUTH 89 DEGREES 47 MINUTES 00 SECONDS WEST ALONG THE SOUTH LINE OF SAID 1/4 - 1/4 SECTION FOR 63.82 FEET; THENCE RUN SOUTH 65 DEGREES 48 MINUTES 02 SECONDS WEST FOR 46.65 FEET; THENCE RUN NORTH 37 DEGREES 17 MINUTES 11 SECONDS WEST FOR 64.82 FEET; THENCE RUN NORTH 29 DEGREES 44 MINUTES 08 SECONDS WEST FOR 129.36 FEET; THENCE RUN SOUTH 80 DEGREES 46 MINUTES 33 SECONDS WEST FOR 126.31 FEET; THENCE RUN SOUTH 54 DEGREES 11 MINUTES 07 SECONDS WEST FOR 159.46 FEET; THENCE RUN SOUTH 81 DEGREES 13 MINUTES 30 SECONDS WEST FOR 108.52 FEET; THENCE RUN NORTH 85 DEGREES 34 MINUTES 12 SECONDS WEST FOR 75.93 FEET; THENCE RUN NORTH 81 DEGREES 19 MINUTES 39 SECONDS WEST FOR 273.98 FEET; THENCE RUN SOUTH 64 DEGREES 07 MINUTES 51 SECONDS WEST FOR 81.89 FEET; THENCE RUN SOUTH 79 DEGREES 43 MINUTES 00 SECONDS WEST FOR 138.61 FEET; THENCE RUN SOUTH 89 DEGREES 09 MINUTES 08 SECONDS WEST FOR 208.27 FEET; THENCE RUN SOUTH 69 DEGREES 05 MINUTES 39 SECONDS WEST FOR 93.94 FEET; THENCE RUN NORTH 06 DEGREES 05 MINUTES 22 SECONDS WEST FOR 151.49 FEET; THENCE RUN NORTH 09 DEGREES 39 MINUTES 54 SECONDS WEST FOR 68.70 FEET; THENCE RUN NORTH 11 DEGREES 28 MINUTES 14 SECONDS WEST FOR 41.87 FEET; THENCE RUN NORTH 45 DEGREES 42 MINUTES 44 SECONDS EAST FOR 50.04 FEET; THENCE RUN NORTH 58 DEGREES 30 MINUTES 12 SECONDS EAST FOR 50.61 FEET; THENCE RUN NORTH 75 DEGREES 19 MINUTES 47 SECONDS EAST FOR 90.90 FEET; THENCE RUN NORTH 58 DEGREES 49 MINUTES 52 SECONDS EAST FOR 70.24 FEET; THENCE RUN NORTH 53 DEGREES 08 MINUTES 02 SECONDS EAST FOR 75.13 FEET; THENCE RUN NORTH 65 DEGREES 47 MINUTES 18 SECONDS EAST FOR 57.65 FEET; THENCE RUN NORTH 25 DEGREES 48 MINUTES 48 SECONDS EAST FOR 42.60 FEET; THENCE RUN NORTH 29 DEGREES 33 MINUTES 55 SECONDS EAST FOR 79.45 FEET; THENCE RUN NORTH 51 DEGREES 02 MINUTES 32 SECONDS EAST FOR 69.38 FEET; THENCE RUN NORTH 52 DEGREES 36 MINUTES 52 SECONDS EAST FOR 117.29 FEET; THENCE RUN NORTH 57 DEGREES 36 MINUTES 32 SECONDS EAST FOR 120.17 FEET; THENCE RUN NORTH 30 DEGREES 34 MINUTES 48 SECONDS EAST FOR 112.33 FEET; THENCE RUN NORTH 41 DEGREES 42 MINUTES 44 SECONDS EAST FOR 175.52 FEET; THENCE RUN NORTH 10 DEGREES 52 MINUTES 36 SECONDS EAST FOR 97.09 FEET; THENCE RUN SOUTH 65 DEGREES 03 MINUTES 21 SECONDS EAST FOR 284.36 FEET; THENCE RUN SOUTH 19 DEGREES 13 MINUTES 52 SECONDS EAST FOR 201.72 FEET; THENCE RUN SOUTH 46 DEGREES 36 MINUTES 36 SECONDS EAST FOR 158.47 FEET; THENCE RUN SOUTH 51 DEGREES 16 MINUTES 27 SECONDS EAST FOR 240.38 FEET TO A POINT ON THE EAST LINE OF SAID 1/4 - 1/4 SECTION; THENCE RUN SOUTH 00 DEGREES 43 MINUTES 19 SECONDS WEST ALONG THE EAST LINE OF SAID 1/4 - 1/4 SECTION FOR 453.57 FEET TO THE POINT OF BEGINNING.

SAID TRACT OF LAND CONTAINING 871,888.69 S.F. OR 20.02 ACRE



20210406000171000 11/28 \$105.00
Shelby Cnty Judge of Probate, AL
04/06/2021 10:28:37 AM FILED/CERT

EXHIBIT AND LEGAL
DESCRIPTION
TRACT 7

POINT OF COMMENCEMENT
SE CORNER
SE 1/4 - NE 1/4
SEC.24,T.19S., R.1W.

SCALE: 1" = 200'

LINE TABLE		
LINE	BEARING	DISTANCE
L1	S 65°48'02" W	291.05'
L2	S 52°16'22" W	290.56'
L3	S 40°26'18" W	245.25'
L4	S 55°02'15" W	181.61'
L5	S 52°23'15" W	121.50'
L6	S 70°05'45" W	199.18'
L7	S 59°27'05" W	193.03'
L8	S 56°54'25" W	177.53'
L9	N 40°10'28" W	633.29'
L10	N 45°50'38" E	24.21'
L11	N 34°53'14" E	167.14'
L12	N 41°33'50" E	97.19'
L13	N 56°09'57" E	254.54'
L14	N 71°31'29" E	121.76'
L15	N 69°05'39" E	93.94'
L16	N 89°09'08" E	208.27'
L17	N 79°43'00" E	138.61'
L18	N 64°07'51" E	81.89'
L19	S 81°19'39" E	273.98'
L20	S 85°34'12" E	75.93'
L21	N 81°13'30" E	108.52'
L22	N 54°11'07" E	159.46'
L23	N 80°46'33" E	126.31'
L24	S 29°44'08" E	129.36'
L25	S 37°17'11" E	64.82'
L26	S 89°47'00" W	63.82'
L27	S 65°48'02" W	46.65'

50' INGRESS, EGRESS AND
UTILITY EASEMENT

PINE MOUNTAIN TRAIL

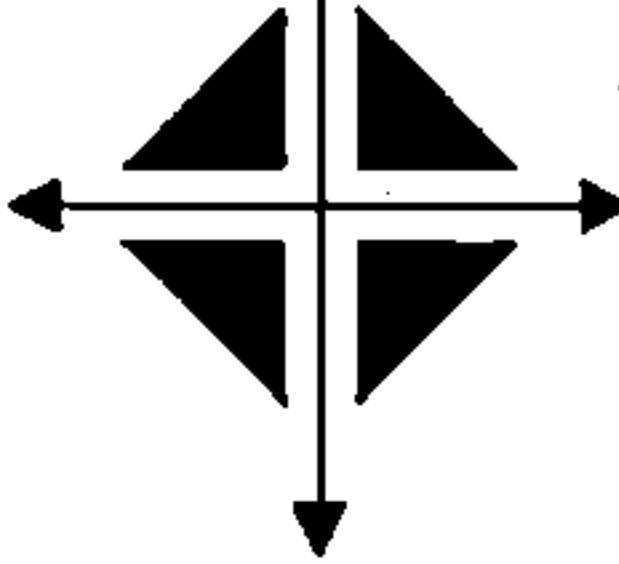
TRACT 7
916,018.7 S.F.
21.03 ACRES

DESCRIPTION: TRACT 7
DESCRIPTION: TRACT 7

COMMENCE AT THE SOUTHEAST CORNER OF THE SOUTHEAST QUARTER OF THE
NORTHEAST QUARTER OF SECTION 24, TOWNSHIP 19 SOUTH, RANGE 1 WEST,
SHELBY COUNTY, ALABAMA; THENCE RUN SOUTH 89 DEGREES 47 MINUTES 00
SECONDS WEST AND RUN ALONG THE SOUTH LINE OF SAID 1/4 - 1/4 SECTION FOR
63.82 FEET; THENCE RUN SOUTH 65 DEGREES 48 MINUTES 02 SECONDS WEST FOR
46.65 FEET TO THE POINT OF BEGINNING; THENCE RUN SOUTH 65 DEGREES 48
MINUTES 02 SECONDS WEST FOR 291.05 FEET; THENCE RUN SOUTH 52 DEGREES 16
MINUTES 22 SECONDS WEST FOR 290.56 FEET; THENCE RUN SOUTH 40 DEGREES 26
MINUTES 18 SECONDS WEST FOR 245.25 FEET; THENCE RUN SOUTH 55 DEGREES 02
MINUTES 15 SECONDS WEST FOR 181.61 FEET; THENCE RUN SOUTH 62 DEGREES 23
MINUTES 15 SECONDS WEST FOR 121.50 FEET; THENCE RUN SOUTH 70 DEGREES 05
MINUTES 45 SECONDS WEST FOR 199.18 FEET; THENCE RUN SOUTH 59 DEGREES 27
MINUTES 05 SECONDS WEST FOR 193.03 FEET; THENCE RUN SOUTH 56 DEGREES 54
MINUTES 25 SECONDS WEST FOR 177.53 FEET; THENCE RUN NORTH 40 DEGREES 10
MINUTES 28 SECONDS WEST FOR 633.29 FEET; THENCE RUN NORTH 45 DEGREES 50
MINUTES 38 SECONDS EAST FOR 24.21 FEET; THENCE RUN NORTH 34 DEGREES 53
MINUTES 14 SECONDS EAST FOR 167.14 FEET; THENCE RUN NORTH 41 DEGREES 33
MINUTES 50 SECONDS EAST FOR 97.19 FEET; THENCE RUN NORTH 56 DEGREES 09
MINUTES 57 SECONDS EAST FOR 254.54 FEET; THENCE RUN NORTH 71 DEGREES 31
MINUTES 29 SECONDS EAST FOR 121.76 FEET; THENCE RUN NORTH 69 DEGREES 05
MINUTES 39 SECONDS EAST FOR 93.94 FEET; THENCE RUN NORTH 89 DEGREES 09
MINUTES 08 SECONDS EAST FOR 208.27 FEET; THENCE RUN NORTH 79 DEGREES 43
MINUTES 00 SECONDS EAST FOR 138.61 FEET; THENCE RUN NORTH 64 DEGREES 07
MINUTES 51 SECONDS EAST FOR 81.89 FEET; THENCE RUN SOUTH 81 DEGREES 19
MINUTES 39 SECONDS EAST FOR 273.98 FEET; THENCE RUN SOUTH 85 DEGREES 34
MINUTES 12 SECONDS EAST FOR 75.93 FEET; THENCE RUN NORTH 81 DEGREES 13
MINUTES 30 SECONDS EAST FOR 108.52 FEET; THENCE RUN NORTH 54 DEGREES 11
MINUTES 07 SECONDS EAST FOR 159.46 FEET; THENCE RUN NORTH 80 DEGREES 46
MINUTES 33 SECONDS EAST FOR 126.31 FEET; THENCE RUN SOUTH 29 DEGREES 44
MINUTES 08 SECONDS EAST FOR 129.36 FEET; THENCE RUN SOUTH 37 DEGREES 17
MINUTES 11 SECONDS EAST FOR 64.82 FEET TO THE POINT OF BEGINNING.



202104060001711000 12/28 \$105.00
Shelby Cnty Judge of Probate, AL
04/06/2021 10:28:37 AM FILED/CERT

**ARRINGTON ENGINEERING**
CIVIL ENGINEERS - SURVEYORS - LAND PLANNERS

Office: (205) 985-9315
Fax: (205) 985-9385
2032 Valleydale Road
Birmingham AL 35244

DESCRIPTION: TRACT 1-7

COMMENCE AT THE SOUTHEAST CORNER OF THE SOUTHEAST QUARTER OF THE NORTHEAST QUARTER OF SECTION 24, TOWNSHIP 19 SOUTH, RANGE 1 WEST, SHELBY COUNTY, ALABAMA; THENCE RUN SOUTH 89 DEGREES 47 MINUTES 00 SECONDS WEST AND RUN ALONG THE SOUTH LINE OF SAID 1/4 -1/4 SECTION FOR 63.82 FEET; THENCE RUN SOUTH 65 DEGREES 48 MINUTES 02 SECONDS WEST FOR 46.65 FEET TO THE POINT OF BEGINNING; THENCE RUN SOUTH 65 DEGREES 48 MINUTES 02 SECONDS WEST FOR 291.05 FEET; THENCE RUN SOUTH 52 DEGREES 16 MINUTES 22 SECONDS WEST FOR 290.56 FEET; THENCE RUN SOUTH 40 DEGREES 26 MINUTES 18 SECONDS WEST FOR 245.25 FEET; THENCE RUN SOUTH 55 DEGREES 02 MINUTES 15 SECONDS WEST FOR 181.61 FEET; THENCE RUN SOUTH 62 DEGREES 23 MINUTES 15 SECONDS WEST FOR 121.50 FEET; THENCE RUN SOUTH 70 DEGREES 05 MINUTES 45 SECONDS WEST FOR 199.18 FEET; THENCE RUN SOUTH 59 DEGREES 27 MINUTES 05 SECONDS WEST FOR 193.03 FEET; THENCE RUN SOUTH 56 DEGREES 54 MINUTES 25 SECONDS WEST FOR 177.53 FEET; THENCE RUN NORTH 40 DEGREES 10 MINUTES 28 SECONDS WEST FOR 633.29 FEET; THENCE RUN NORTH 45 DEGREES 50 MINUTES 38 SECONDS EAST FOR 24.21 FEET; THENCE RUN NORTH 34 DEGREES 53 MINUTES 14 SECONDS EAST FOR 167.14 FEET; THENCE RUN NORTH 41 DEGREES 33 MINUTES 50 SECONDS EAST FOR 97.19 FEET; THENCE RUN NORTH 56 DEGREES 09 MINUTES 57 SECONDS EAST FOR 254.54 FEET; THENCE RUN NORTH 71 DEGREES 31 MINUTES 29 SECONDS EAST FOR 121.76 FEET; THENCE RUN NORTH 69 DEGREES 05 MINUTES 39 SECONDS EAST FOR 93.94 FEET; THENCE RUN NORTH 89 DEGREES 09 MINUTES 08 SECONDS EAST FOR 208.27 FEET; THENCE RUN NORTH 79 DEGREES 43 MINUTES 00 SECONDS EAST FOR 138.61 FEET; THENCE RUN NORTH 64 DEGREES 07 MINUTES 51 SECONDS EAST FOR 81.89 FEET; THENCE RUN SOUTH 81 DEGREES 19 MINUTES 39 SECONDS EAST FOR 273.98 FEET; THENCE RUN SOUTH 85 DEGREES 34 MINUTES 12 SECONDS EAST FOR 75.93 FEET; THENCE RUN NORTH 81 DEGREES 13 MINUTES 30 SECONDS EAST FOR 108.52 FEET; THENCE RUN NORTH 54 DEGREES 11 MINUTES 07 SECONDS EAST FOR 159.46 FEET; THENCE RUN NORTH 80 DEGREES 46 MINUTES 33 SECONDS EAST FOR 126.31 FEET; THENCE RUN SOUTH 29 DEGREES 44 MINUTES 08 SECONDS EAST FOR 129.36 FEET; THENCE RUN SOUTH 37 DEGREES 17 MINUTES 11 SECONDS EAST FOR 64.82 FEET TO THE POINT OF BEGINNING.



20210406000171000 13/28 \$105.00
Shelby Cnty Judge of Probate, AL
04/06/2021 10:28:37 AM FILED/CERT

DESCRIPTION CONSERVATION EASEMENT

COMMENCE AT THE NORTHWEST CORNER OF SECTION 19, TOWNSHIP 19 SOUTH, RANGE 1 EAST, SHELBY COUNTY, ALABAMA; THENCE RUN SOUTH 00 DEGREES 43 MINUTES 19 SECONDS WEST ALONG THE WEST LINE OF SAID SECTION 19 FOR 171.36 FEET TO THE POINT OF BEGINNING; THENCE RUN NORTH 59 DEGREES 31 MINUTES 01 SECONDS EAST FOR 408.04 FEET; THENCE RUN SOUTH 72 DEGREES 38 MINUTES 04 SECONDS EAST FOR 60.92 FEET; THENCE RUN NORTH 74 DEGREES 14 MINUTES 28 SECONDS EAST FOR 91.78 FEET; THENCE RUN NORTH 54 DEGREES 34 MINUTES 55 SECONDS EAST FOR 238.09 FEET; THENCE RUN SOUTH 36 DEGREES 53 MINUTES 20 SECONDS EAST FOR 244.84 FEET; THENCE RUN SOUTH 38 DEGREES 14 MINUTES 41 SECONDS WEST FOR 304.16 FEET; THENCE RUN SOUTH 03 DEGREES 21 MINUTES 32 SECONDS EAST FOR 208.79 FEET; THENCE RUN SOUTH 69 DEGREES 44 MINUTES 13 SECONDS WEST FOR 157.70 FEET; THENCE RUN SOUTH 48 DEGREES 40 MINUTES 45 SECONDS WEST FOR 399.01 FEET; THENCE RUN SOUTH 51 DEGREES 49 MINUTES 57 SECONDS WEST FOR 286.65 FEET; THENCE RUN NORTH 00 DEGREES 43 MINUTES 19 SECONDS EAST FOR 786.69 FEET TO THE POINT OF BEGINNING.

SAID TRACT OF LAND CONTAINING 492422.39S.F. OR 11.30ACRES MORE OR LESS.

LINE TABLE		
LINE	BEARING	DISTANCE
L1	S 59°31'01" W	408.04'
L2	S 72°38'04" E	60.92'
L3	N 74°14'28" E	91.78'
L4	N 54°34'55" E	238.09'
L5	S 36°53'20" E	244.84'
L6	S 38°14'41" W	304.16'
L7	S 03°21'32" E	208.79'
L8	S 69°44'13" W	157.70'
L9	S 48°40'45" W	399.01'
L10	S 51°49'57" W	286.65'
L11	S 50°18'39" W	179.40'
L12	S 44°58'31" W	254.90'
L13	N 38°50'27" W	564.14'
L14	N 46°43'21" E	936.67'
L15	N 00°43'19" E	786.69'

C/L 50' INGRESS,
EGRESS AND UTILITY
EASEMENT

PINE MOUNTAIN
TRAIL

TRACT 11-H

CONSERVATION
EASEMENT

POINT OF BEGINNING

POINT OF COMMENCEMENT
CONSERVATION EASEMENT
NW CORNER, SECTION 19,
TOWNSHIP 19 SOUTH, RANGE 1
EAST, SHELBY COUNTY, ALABAMA

171.36'
S 00°43'19" W

NOT TO SCALE

SCALE: 1" = 200'

DESCRIPTION TRACT 11-H

COMMENCE AT THE NORTHWEST CORNER OF SECTION 19, TOWNSHIP 19 SOUTH, RANGE 1 EAST, SHELBY COUNTY, ALABAMA; THENCE RUN SOUTH 00 DEGREES 43 MINUTES 19 SECONDS WEST ALONG THE WEST LINE OF SAID SECTION 19 FOR 171.36 FEET TO THE POINT OF BEGINNING; THENCE RUN NORTH 59 DEGREES 31 MINUTES 01 SECONDS EAST FOR 408.04 FEET; THENCE RUN SOUTH 72 DEGREES 38 MINUTES 04 SECONDS EAST FOR 60.92 FEET; THENCE RUN NORTH 74 DEGREES 14 MINUTES 28 SECONDS EAST FOR 91.78 FEET; THENCE RUN NORTH 54 DEGREES 34 MINUTES 55 SECONDS EAST FOR 238.09 FEET; THENCE RUN SOUTH 36 DEGREES 53 MINUTES 20 SECONDS EAST FOR 244.84 FEET; THENCE RUN SOUTH 38 DEGREES 14 MINUTES 41 SECONDS WEST FOR 304.16 FEET; THENCE RUN SOUTH 03 DEGREES 21 MINUTES 32 SECONDS EAST FOR 208.79 FEET; THENCE RUN SOUTH 69 DEGREES 44 MINUTES 13 SECONDS WEST FOR 157.70 FEET; THENCE RUN SOUTH 48 DEGREES 40 MINUTES 45 SECONDS WEST FOR 399.01 FEET; THENCE RUN SOUTH 51 DEGREES 49 MINUTES 57 SECONDS WEST FOR 286.65 FEET; THENCE RUN SOUTH 50 DEGREES 18 MINUTES 39 SECONDS WEST FOR 179.40 FEET; THENCE RUN SOUTH 44 DEGREES 58 MINUTES 31 SECONDS WEST FOR 254.90 FEET; THENCE RUN NORTH 38 DEGREES 50 MINUTES 27 SECONDS WEST FOR 564.14 FEET; THENCE RUN NORTH 46 DEGREES 43 MINUTES 21 SECONDS EAST FOR 936.67 FEET; THENCE RUN NORTH 59 DEGREES 31 MINUTES 01 SECONDS EAST FOR 408.04 FEET TO THE POINT OF BEGINNING.

SAID TRACT OF LAND CONTAINING 877410.15S.F. OR 20.14 ACRES MORE OR LESS



202104060000171000 14/28 \$105.00
Shelby Cnty Judge of Probate, AL
04/06/2021 10:28:37 AM FILED/CERT

ARRINGTON ENGINEERING

Civil Engineers - Surveyors - Land Planners

Office: (205) 985-9315
Fax: (205) 985-9365
2032 Valleydale Road
Birmingham AL 35244

20210406000171000 15/28 \$105.00
Shelby Cnty Judge of Probate, AL
04/06/2021 10:28:37 AM FILED/CERT

DESCRIPTION TRACT 11-H

COMMENCE AT THE NORTHWEST CORNER OF SECTION 19, TOWNSHIP 19 SOUTH, RANGE 1 EAST, SHELBY COUNTY, ALABAMA; THENCE RUN SOUTH 00 DEGREES 43 MINUTES 19 SECONDS WEST ALONG THE WEST LINE OF SAID SECTION 19 FOR 171.36 FEET TO THE POINT OF BEGINNING; THENCE RUN NORTH 59 DEGREES 31 MINUTES 01 SECONDS EAST FOR 408.04 FEET; THENCE RUN SOUTH 72 DEGREES 38 MINUTES 04 SECONDS EAST FOR 60.92 FEET; THENCE RUN NORTH 74 DEGREES 14 MINUTES 28 SECONDS EAST FOR 91.78 FEET; THENCE RUN NORTH 54 DEGREES 34 MINUTES 55 SECONDS EAST FOR 238.09 FEET; THENCE RUN SOUTH 36 DEGREES 53 MINUTES 20 SECONDS EAST FOR 244.84 FEET; THENCE RUN SOUTH 38 DEGREES 14 MINUTES 41 SECONDS WEST FOR 304.16 FEET; THENCE RUN SOUTH 03 DEGREES 21 MINUTES 32 SECONDS EAST FOR 208.79 FEET; THENCE RUN SOUTH 69 DEGREES 44 MINUTES 13 SECONDS WEST FOR 157.70 FEET; THENCE RUN SOUTH 48 DEGREES 40 MINUTES 45 SECONDS WEST FOR 399.01 FEET; THENCE RUN SOUTH 51 DEGREES 49 MINUTES 57 SECONDS WEST FOR 286.65 FEET; THENCE RUN SOUTH 50 DEGREES 18 MINUTES 39 SECONDS WEST FOR 179.40 FEET; THENCE RUN SOUTH 44 DEGREES 58 MINUTES 31 SECONDS WEST FOR 254.90 FEET; THENCE RUN NORTH 38 DEGREES 50 MINUTES 27 SECONDS WEST FOR 564.14 FEET; THENCE RUN NORTH 46 DEGREES 43 MINUTES 21 SECONDS EAST FOR 936.67 FEET; THENCE RUN NORTH 59 DEGREES 31 MINUTES 01 SECONDS EAST FOR 408.04 FEET TO THE POINT OF BEGINNING.

SAID TRACT OF LAND CONTAINING 877410.15S.F. OR 20.14 ACRES MORE OR LESS.

DESCRIPTION CONSERVATION EASEMENT

COMMENCE AT THE NORTHWEST CORNER OF SECTION 19, TOWNSHIP 19 SOUTH, RANGE 1 EAST, SHELBY COUNTY, ALABAMA; THENCE RUN SOUTH 00 DEGREES 43 MINUTES 19 SECONDS WEST ALONG THE WEST LINE OF SAID SECTION 19 FOR 958.05 FEET TO THE POINT OF BEGINNING; THENCE RUN NORTH 51 DEGREES 49 MINUTES 57 SECONDS EAST FOR 286.65 FEET; THENCE RUN SOUTH 31 DEGREES 59 MINUTES 12 SECONDS WEST FOR 1016.23 FEET TO A POINT ON THE WEST LINE OF SAID SECTION 19; THENCE RUN NORTH 00 DEGREES 43 MINUTES 19 SECONDS EAST ALONG THE WEST LINE OF SAID SECTION 19 FOR 1330.74 FEET TO THE POINT OF BEGINNING. SAID TRACT OF LAND CONTAINING 648, 108.52 S.F. OR 14.88 ACRES MORE OR LESS.

DESCRIPTION TRACT 12-H

COMMENCE AT THE NORTHEAST CORNER OF SECTION 24, TOWNSHIP 19 SOUTH, RANGE 1 WEST, SHELBY COUNTY, ALABAMA; THENCE RUN SOUTH 00 DEGREES 43 MINUTES 19 SECONDS WEST ALONG THE EAST LINE OF SAID SECTION 24 FOR 958.05 FEET TO THE POINT OF BEGINNING; THENCE RUN NORTH 51 DEGREES 49 MINUTES 57 SECONDS EAST FOR 286.65 FEET; THENCE RUN SOUTH 31 DEGREES 59 MINUTES 12 SECONDS EAST FOR 1016.23 FEET; THENCE RUN NORTH 00 DEGREES 43 MINUTES 19 SECONDS EAST FOR 130.60 FEET; THENCE RUN NORTH 51 DEGREES 16 MINUTES 27 SECONDS WEST FOR 240.38 FEET; THENCE RUN NORTH 46 DEGREES 36 MINUTES 36 SECONDS WEST FOR 158.47 FEET; THENCE RUN NORTH 19 DEGREES 13 MINUTES 52 SECONDS WEST FOR 201.72 FEET; THENCE RUN NORTH 65 DEGREES 03 MINUTES 21 SECONDS WEST FOR 284.36 FEET; THENCE RUN NORTH 41 DEGREES 27 MINUTES 50 SECONDS EAST FOR 108.83 FEET; THENCE RUN NORTH 46 DEGREES 51 MINUTES 45 SECONDS EAST FOR 78.64 FEET; THENCE RUN NORTH 43 DEGREES 19 MINUTES 31 SECONDS EAST FOR 137.94 FEET; THENCE RUN NORTH 44 DEGREES 58 MINUTES 31 SECONDS EAST FOR 396.05 FEET; THENCE RUN NORTH 50 DEGREES 18 MINUTES 39 SECONDS EAST FOR 179.40 FEET TO THE POINT OF BEGINNING. SAID TRACT OF LAND CONTAINING 1,023,166.86 S.F. OR 23.49 ACRES MORE OR LESS.

EXHIBIT AND LEGAL DESCRIPTION
TRACT 12-H

SCALE: 1" = 200'

POINT OF COMMENCEMENT
TRACT 5
NE CORNER, SECTION 24,
TOWNSHIP 19 SOUTH, RANGE 1
WEST, SHELBY COUNTY, ALABAMA

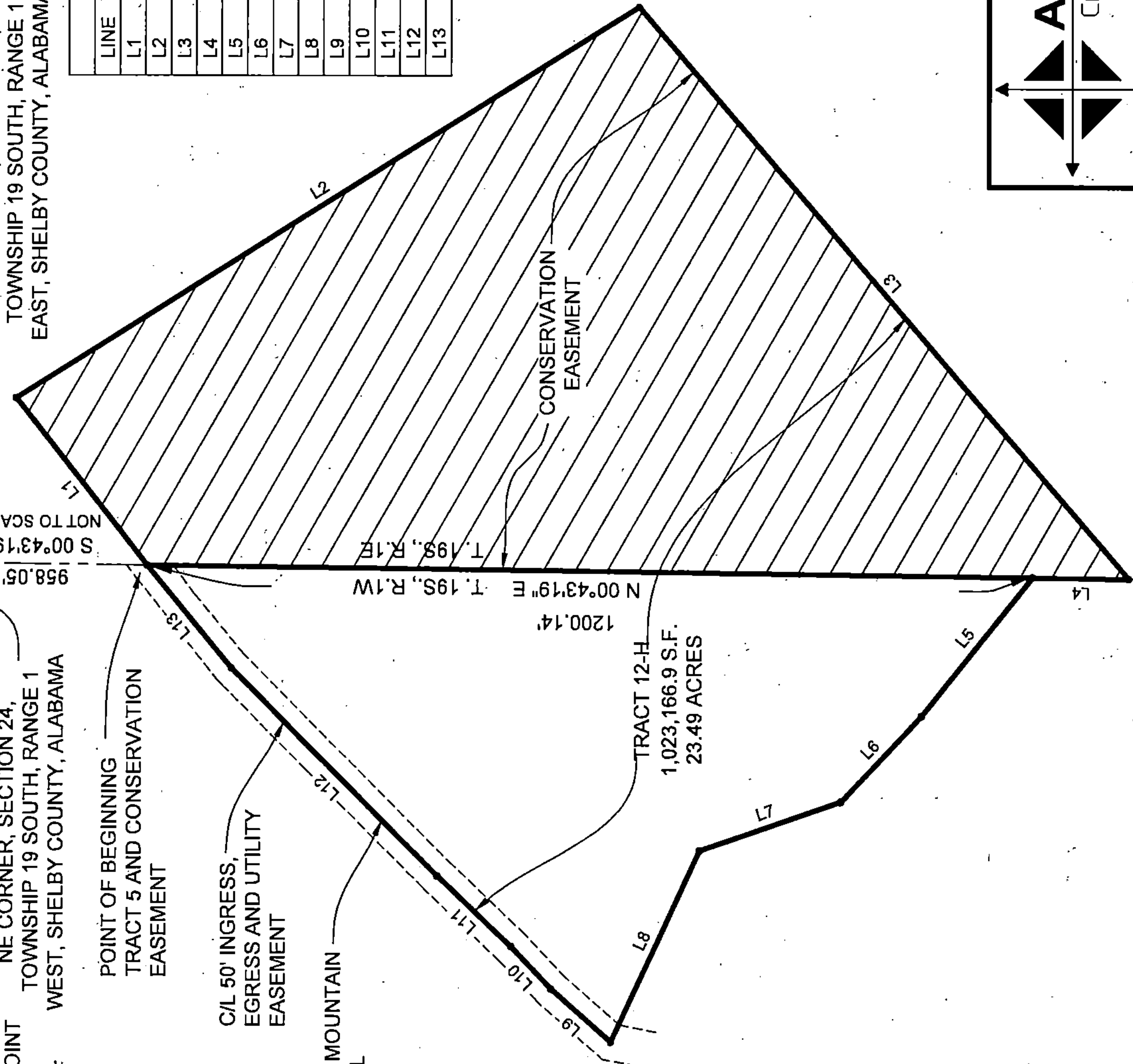
POINT OF BEGINNING
TRACT 5 AND CONSERVATION
EASEMENT

C/L 50' INGRESS,
EGRESS AND UTILITY
EASEMENT

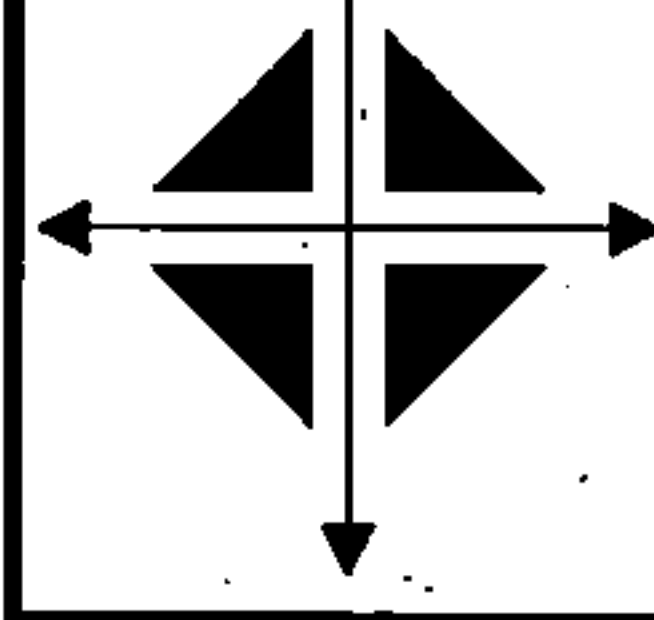
PINE MOUNTAIN
TRAIL

POINT OF COMMENCEMENT
CONSERVATION EASEMENT
NW CORNER, SECTION 19,
TOWNSHIP 19 SOUTH, RANGE 1
EAST, SHELBY COUNTY, ALABAMA

LINE TABLE		
LINE	BEARING	DISTANCE
L1	N 51°49'57" E	286.65'
L2	S 31°59'50" E	995.04'
L3	S 49°12'32" W	1016.23'
L4	N 00°43'19" E	130.60'
L5	N 51°16'27" W	240.38'
L6	N 46°36'36" W	158.47'
L7	N 19°13'52" W	201.72'
L8	N 65°03'21" W	284.36'
L9	N 41°27'50" E	108.83'
L10	N 46°51'45" E	78.64'
L11	N 43°19'31" E	137.94'
L12	N 44°58'31" E	396.05'
L13	N 50°18'39" E	179.40'



20210406000171000 16/28 \$105.00
Shelby Cnty Judge of Probate, AL
04/06/2021 10:28:37 AM FILED/CERT

**ARRINGTON ENGINEERING**
CIVIL ENGINEERS - SURVEYORS - LAND PLANNERS

OFFICE: (205) 985-9315
Fax: (205) 985-9385
2032 Valleydale Road
Birmingham AL 35244

DESCRIPTION OF TRACT 5

COMMENCE AT THE NORTHEAST CORNER OF SECTION 24, TOWNSHIP 19 SOUTH, RANGE 1 WEST, SHELBY COUNTY, ALABAMA ; THENCE RUN SOUTH 00 DEGREES 43 MINUTES 19 SECONDS WEST ALONG THE EAST LINE OF SAID SECTION 24 FOR 958.05 FEET TO THE POINT OF BEGINNING ;THENCE RUN NORTH 51 DEGREES 49 MINUTES 57 SECONDS EAST FOR 286.65 FEET; THENCE RUN SOUTH 31 DEGREES 59 MINUTES 50 SECONDS EAST FOR 995.04 FEET; THENCE RUN SOUTH 49 DEGREES 12 MINUTES 32 SECONDS WEST FOR 1016.23 FEET; THENCE RUN NORTH 00 DEGREES 43 MINUTES 19 SECONDS EAST FOR 130.60 FEET; THENCE RUN NORTH 51 DEGREES 16 MINUTES 27 SECONDS WEST FOR 240.38 FEET; THENCE RUN NORTH 46 DEGREES 36 MINUTES 36 SECONDS WEST FOR 158.47 FEET; THENCE RUN NORTH 19 DEGREES 13 MINUTES 52 SECONDS WEST FOR 201.72 FEET; THENCE RUN NORTH 65 DEGREES 03 MINUTES 21 SECONDS WEST FOR 284.36 FEET; THENCE RUN NORTH 41 DEGREES 27 MINUTES 50 SECONDS EAST FOR 108.83 FEET; THENCE RUN NORTH 46 DEGREES 51 MINUTES 45 SECONDS EAST FOR 78.64 FEET; THENCE RUN NORTH 43 DEGREES 19 MINUTES 31 SECONDS EAST FOR 137.94 FEET; THENCE RUN NORTH 44 DEGREES 58 MINUTES 31 SECONDS EAST FOR 191.44 FEET; THENCE RUN NORTH 44 DEGREES 58 MINUTES 31 SECONDS EAST FOR 396.05 FEET; THENCE RUN NORTH 50 DEGREES 18 MINUTES 39 SECONDS EAST FOR 179.40 FEET TO THE POINT OF BEGINNING. SAID TRACT OF LAND CONTAINING 1,023,166.86 S.F. OR 23.49 ACRES MORE OR LESS.



20210406000171000 17/28 \$105.00
Shelby Cnty Judge of Probate, AL
04/06/2021 10:28:37 AM FILED/CERT



20210406000171000 18/28 \$105.00
Shelby Cnty Judge of Probate, AL
04/06/2021 10:28:37 AM FILED/CERT

PARCEL NO. M-1 (FOR ANNEXATION)

COMMENCE AT A 1" PIPE IN PLACE BEING THE NORTHEAST CORNER OF SECTION 24, TOWNSHIP 19 SOUTH, RANGE 1 WEST, SHELBY COUNTY, ALABAMA; THENCE PROCEED SOUTH 00° 43' 19" WEST ALONG THE EAST BOUNDARY OF SAID SECTION FOR A DISTANCE OF 84.00 FEET (SET ½" REBAR CA-0114-LS), SAID POINT BEING THE POINT OF BEGINNING. FROM THIS BEGINNING POINT PROCEED SOUTH 00° 43' 19" WEST ALONG THE EAST BOUNDARY OF SAID SECTION 24 FOR A DISTANCE 87.35 FEET; THENCE PROCEED NORTH 59° 31' 01" EAST FOR A DISTANCE OF 408.04 FEET; THENCE PROCEED SOUTH 72° 38' 04" EAST FOR A DISTANCE OF 60.92 FEET; THENCE PROCEED NORTH 74° 14' 28" EAST FOR A DISTANCE OF 91.78 FEET; THENCE PROCEED NORTH 54° 34' 55" EAST FOR A DISTANCE OF 238.09 FEET; THENCE PROCEED SOUTH 36° 53' 20" EAST FOR A DISTANCE OF 244.84 FEET; THENCE PROCEED SOUTH 38° 14' 41" WEST FOR A DISTANCE OF 304.16 FEET; THENCE PROCEED SOUTH 03° 21' 32" EAST FOR A DISTANCE OF 208.79 FEET; THENCE PROCEED SOUTH 69° 44' 13" WEST FOR A DISTANCE OF 157.70 FEET; THENCE PROCEED SOUTH 48° 40' 45" WEST FOR A DISTANCE OF 399.01 FEET; THENCE PROCEED SOUTH 31° 59' 50" EAST FOR A DISTANCE OF 995.04 FEET; THENCE PROCEED SOUTH 49° 12' 32" WEST FOR A DISTANCE OF 1016.23 FEET TO A POINT ON THE EAST BOUNDARY OF THE SOUTHEAST ONE-FOURTH OF THE NORTHEAST ONE-FOURTH OF SAID SECTION 24; THENCE PROCEED SOUTH 00° 43' 19" WEST ALONG THE EAST BOUNDARY OF SAID QUARTER-QUARTER SECTION FOR A DISTANCE OF 322.97 FEET TO A ½" REBAR IN PLACE, SAID POINT BEING THE SOUTHEAST CORNER OF THE SOUTHEAST ONE-FOURTH OF THE NORTHEAST ONE-FOURTH OF SAID SECTION; THENCE PROCEED SOUTH 89° 47' 00" WEST ALONG THE SOUTH BOUNDARY OF SAID QUARTER-QUARTER SECTION FOR A DISTANCE OF 63.82 FEET TO A RAILROAD SPIKE IN PLACE; THENCE PROCEED SOUTH 65° 48' 02" WEST FOR A DISTANCE OF 337.70 FEET TO A 1" CAPPED PIPE IN PLACE; THENCE PROCEED SOUTH 52° 16' 22" WEST FOR A DISTANCE OF 290.56 FEET TO A ½" REBAR IN PLACE; THENCE PROCEED SOUTH 40° 26' 18" WEST FOR A DISTANCE OF 245.25 FEET TO A ½" REBAR IN PLACE; THENCE PROCEED SOUTH 55° 02' 15" WEST FOR A DISTANCE OF 181.61 FEET TO A ½" REBAR IN PLACE; THENCE PROCEED SOUTH 62° 23' 15" WEST FOR A DISTANCE OF 121.50 FEET TO A ½" REBAR IN PLACE; THENCE PROCEED SOUTH 70° 05' 45" WEST FOR A DISTANCE OF 199.18 FEET TO A ½" REBAR IN PLACE; THENCE PROCEED SOUTH 59° 27' 05" WEST FOR A DISTANCE OF 193.03 FEET TO A ½" REBAR IN PLACE; THENCE PROCEED SOUTH 56° 54' 25" WEST FOR A DISTANCE OF 417.44 FEET TO A ½" REBAR IN PLACE; THENCE PROCEED SOUTH 56° 36' 05" WEST FOR A DISTANCE OF 353.89 FEET TO A ½" REBAR IN PLACE; THENCE PROCEED SOUTH 52° 44' 15" WEST FOR A DISTANCE OF 186.48 FEET TO A ½" REBAR IN PLACE; THENCE PROCEED SOUTH 55° 33' 08" WEST FOR A DISTANCE OF 282.16 FEET TO A ½" REBAR IN PLACE; THENCE PROCEED SOUTH 60° 22' 50" WEST FOR A DISTANCE OF 235.64 FEET TO A ½" REBAR IN PLACE SAID POINT BEING LOCATED ON THE EASTERLY RIGHT-OF-WAY OF HARGIS DRIVE (SHELBY COUNTY ROAD) AND ALSO BEING THE P. C. OF A CONCAVE CURVE RIGHT HAVING A DELTA ANGLE OF 08° 02' 36" AND A RADIUS OF 1744.33 FEET; THENCE PROCEED NORTHEASTERLY ALONG THE EASTERLY RIGHT-OF-WAY OF SAID ROAD AND ALONG THE CURVATURE OF SAID CURVE FOR A CHORD BEARING AND DISTANCE OF NORTH 09° 21' 21" EAST, 244.67 FEET TO THE TO P. T. OF SAID CURVE AND A CONCRETE MONUMENT IN PLACE; THENCE PROCEED NORTH 13° 22' 39" EAST ALONG THE EASTERLY RIGHT-OF-WAY OF SAID ROAD FOR A DISTANCE OF 821.11 FEET TO THE P. C. OF A CONCAVE LEFT HAVING A DELTA ANGLE OF 99° 10' 23" AND A RADIUS OF 515.87 FEET; THENCE PROCEED NORTHEASTERLY AND



20210406000171000 19/28 \$105.00
Shelby Cnty Judge of Probate, AL
04/06/2021 10:28:37 AM FILED/CERT

NORTHWESTERLY ALONG THE RIGHT-OF-WAY OF SAID ROAD AND ALONG THE CURVATURE OF SAID CURVE FOR A CHORD BEARING AND DISTANCE OF NORTH 36° 12' 33" WEST, 785.55 FEET TO THE P. T. OF SIDE CURVE AND A CONCRETE MONUMENT IN PLACE; THENCE PROCEED NORTH 42° 12' 06" EAST FOR A DISTANCE OF 328.55 FEET; THENCE PROCEED NORTH 00° 48' 37" EAST FOR A DISTANCE OF 101.34 FEET TO THE SHORE LINE OF HARGIS LAKE; THENCE PROCEED NORTH 89° 27' 50" WEST ALONG THE SHORELINE OF SAID HARGIS LAKE FOR A DISTANCE OF 188.73 FEET; THENCE PROCEED NORTH 84° 40' 03" WEST ALONG THE SHORELINE OF SAID HARGIS LAKE FOR A DISTANCE OF 127.22 FEET; THENCE PROCEED NORTH 77° 45' 29" WEST ALONG THE SHORELINE OF SAID HARGIS LAKE FOR A DISTANCE OF 108.40 FEET; THENCE PROCEED NORTH 73° 39' 21" WEST ALONG THE SHORELINE OF SAID HARGIS LAKE FOR A DISTANCE OF 73.03 FEET; THENCE PROCEED NORTH 36° 31' 28" WEST ALONG THE SHORELINE OF SAID HARGIS LAKE FOR A DISTANCE OF 73.53 FEET; THENCE PROCEED NORTH 21° 49' 51" WEST ALONG THE SHORELINE OF SAID HARGIS LAKE FOR A DISTANCE OF 65.11 FEET; THENCE PROCEED NORTH 66° 41' 23" WEST ALONG THE SHORELINE OF SAID HARGIS LAKE FOR A DISTANCE OF 21.10 FEET; THENCE PROCEED SOUTH 61° 18' 17" WEST ALONG THE SHORELINE OF SAID HARGIS LAKE FOR A DISTANCE OF 79.91 FEET; THENCE PROCEED SOUTH 89° 39' 05" WEST ALONG THE SHORELINE OF SAID HARGIS LAKE FOR A DISTANCE OF 16.35 FEET; THENCE PROCEED NORTH 72° 11' 42" WEST ALONG THE SHORELINE OF SAID HARGIS LAKE FOR A DISTANCE OF 21.39 FEET; THENCE PROCEED NORTH 05° 33' 22" WEST ALONG THE SHORELINE OF SAID HARGIS LAKE FOR A DISTANCE OF 92.74 FEET; THENCE PROCEED NORTH 25° 43' 53" WEST ALONG THE SHORELINE OF SAID HARGIS LAKE FOR A DISTANCE OF 29.21 FEET; THENCE PROCEED NORTH 58° 56' 14" WEST ALONG THE SHORELINE OF SAID HARGIS LAKE FOR A DISTANCE OF 49.91 FEET; THENCE PROCEED NORTH 47° 20' 40" WEST ALONG THE SHORELINE OF SAID HARGIS LAKE FOR A DISTANCE OF 21.19 FEET; THENCE PROCEED NORTH 17° 49' 27" WEST ALONG THE SHORELINE OF SAID HARGIS LAKE FOR A DISTANCE OF 39.15 FEET; THENCE PROCEED NORTH 13° 06' 30" EAST ALONG THE SHORELINE OF SAID HARGIS LAKE FOR A DISTANCE OF 46.00 FEET; THENCE PROCEED NORTH 49° 12' 41" EAST ALONG THE SHORELINE OF SAID HARGIS LAKE FOR A DISTANCE OF 15.80 FEET; THENCE PROCEED NORTH 84° 14' 29" EAST ALONG THE SHORELINE OF SAID HARGIS LAKE FOR A DISTANCE OF 24.52 FEET; THENCE PROCEED SOUTH 63° 22' 54" EAST ALONG THE SHORELINE OF SAID HARGIS LAKE FOR A DISTANCE OF 41.69 FEET; THENCE PROCEED NORTH 85° 16' 45" EAST ALONG THE SHORELINE OF SAID HARGIS LAKE FOR A DISTANCE OF 38.34 FEET; THENCE PROCEED NORTH 47° 14' 22" EAST ALONG THE SHORELINE OF SAID HARGIS LAKE FOR A DISTANCE OF 10.98 FEET; THENCE PROCEED NORTH 02° 06' 58" WEST ALONG THE SHORELINE OF SAID HARGIS LAKE FOR A DISTANCE OF 15.24 FEET; THENCE PROCEED NORTH 07° 04' 36" WEST ALONG THE SHORELINE OF SAID HARGIS LAKE FOR A DISTANCE OF 31.51 FEET; THENCE PROCEED NORTH 69° 38' 06" WEST ALONG THE SHORELINE OF SAID HARGIS LAKE FOR A DISTANCE OF 15.92 FEET; THENCE PROCEED SOUTH 79° 53' 24" WEST ALONG THE SHORELINE OF SAID HARGIS LAKE FOR A DISTANCE OF 36.30 FEET; THENCE PROCEED SOUTH 72° 06' 48" WEST ALONG THE SHORELINE OF SAID HARGIS LAKE FOR A DISTANCE OF 52.18 FEET; THENCE PROCEED NORTH 04° 36' 25" EAST FOR A DISTANCE OF 482.17 FEET; THENCE PROCEED NORTH 71° 40' 38" EAST CROSSING THREE 48" PIPES FOR A DISTANCE OF 14.95 FEET TO THE SHORELINE OF HARGIS LAKE; THENCE PROCEED SOUTH 53° 01' 53" EAST ALONG THE SHORELINE OF SAID HARGIS LAKE FOR A DISTANCE OF 149.93 FEET; THENCE PROCEED SOUTH 84° 49' 15" EAST ALONG THE SHORELINE OF SAID HARGIS LAKE FOR A DISTANCE OF



20210406000171000 20/28 \$105.00
Shelby Cnty Judge of Probate, AL
04/06/2021 10:28:37 AM FILED/CERT

143.14 FEET; THENCE PROCEED NORTH 72° 03' 09" EAST ALONG THE SHORELINE OF SAID HARGIS LAKE FOR A DISTANCE OF 53.79 FEET; THENCE PROCEED NORTH 63° 56' 43" EAST ALONG THE SHORELINE OF SAID HARGIS LAKE FOR A DISTANCE OF 52.17 FEET; THENCE PROCEED SOUTH 42° 20' 17" EAST ALONG THE SHORELINE OF SAID HARGIS LAKE FOR A DISTANCE OF 70.63 FEET; THENCE PROCEED SOUTH 80° 08' 59" EAST ALONG THE SHORELINE OF SAID HARGIS LAKE FOR A DISTANCE OF 72.51 FEET; THENCE PROCEED SOUTH 55° 08' 16" EAST ALONG THE SHORELINE OF SAID HARGIS LAKE FOR A DISTANCE OF 207.20 FEET; THENCE PROCEED SOUTH 40° 53' 32" EAST ALONG THE SHORELINE OF SAID HARGIS LAKE FOR A DISTANCE OF 112.49 FEET; THENCE PROCEED SOUTH 68° 21' 47" EAST ALONG THE SHORELINE OF SAID HARGIS LAKE FOR A DISTANCE OF 47.18 FEET; THENCE PROCEED NORTH 50° 53' 51" EAST ALONG THE SHORELINE OF SAID HARGIS LAKE FOR A DISTANCE OF 68.08 FEET; THENCE PROCEED NORTH 07° 41' 34" WEST ALONG THE SHORELINE OF SAID HARGIS LAKE FOR A DISTANCE OF 97.49 FEET; THENCE PROCEED NORTH 48° 35' 03" EAST ALONG THE SHORELINE OF SAID HARGIS LAKE FOR A DISTANCE OF 69.04 FEET; THENCE PROCEED SOUTH 62° 28' 34" EAST ALONG THE SHORELINE OF SAID HARGIS LAKE FOR A DISTANCE OF 79.93 FEET; THENCE PROCEED SOUTH 45° 27' 00" EAST ALONG THE SHORELINE OF SAID HARGIS LAKE FOR A DISTANCE OF 45.66 FEET; THENCE PROCEED NORTH 72° 18' 47" EAST ALONG THE SHORELINE OF SAID HARGIS LAKE FOR A DISTANCE OF 52.75 FEET; THENCE PROCEED NORTH 02° 48' 32" EAST ALONG THE SHORELINE OF SAID HARGIS LAKE FOR A DISTANCE OF 89.67 FEET; THENCE PROCEED NORTH 45° 10' 59" EAST ALONG THE SHORELINE OF SAID HARGIS LAKE FOR A DISTANCE OF 57.77 FEET; THENCE PROCEED SOUTH 40° 08' 28" EAST ALONG THE SHORELINE OF SAID HARGIS LAKE FOR A DISTANCE OF 47.76 FEET; THENCE PROCEED NORTH 50° 16' 57" EAST ALONG THE SHORELINE OF SAID HARGIS LAKE FOR A DISTANCE OF 45.27 FEET; THENCE PROCEED NORTH 58° 12' 25" EAST ALONG THE SHORELINE OF SAID HARGIS LAKE FOR A DISTANCE OF 97.57 FEET; THENCE PROCEED NORTH 75° 41' 31" EAST ALONG THE SHORELINE OF SAID HARGIS LAKE FOR A DISTANCE OF 136.13 FEET; THENCE PROCEED NORTH 55° 39' 18" EAST ALONG THE SHORELINE OF SAID HARGIS LAKE FOR A DISTANCE OF 258.70 FEET; THENCE PROCEED NORTH 63° 08' 43" EAST ALONG THE SHORELINE OF SAID HARGIS LAKE FOR A DISTANCE OF 142.85 FEET; THENCE PROCEED SOUTH 70° 00' 00" EAST ALONG THE SHORELINE OF SAID HARGIS LAKE FOR A DISTANCE OF 30.00 FEET TO THE CENTERLINE OF DRAW/ BRANCH; THENCE PROCEED NORTH 56° 06' 12" EAST ALONG THE CENTERLINE OF SAID BRANCH FOR A DISTANCE OF 438.87 FEET; THENCE PROCEED NORTH 89° 17' 37" EAST ALONG THE CENTERLINE OF SAID BRANCH FOR A DISTANCE OF 155.71 FEET; THENCE PROCEED NORTH 31° 45' 34" EAST ALONG THE CENTERLINE OF SAID BRANCH FOR A DISTANCE OF 523.96 FEET; THENCE PROCEED NORTH 61° 42' 19" EAST ALONG THE CENTERLINE OF SAID BRANCH FOR A DISTANCE OF 496.83 FEET; THENCE PROCEED NORTH 54° 36' 08" EAST ALONG THE CENTERLINE OF SAID BRANCH FOR A DISTANCE OF 375.06 FEET (SET ½" REBAR CA-0114-LS); THENCE PROCEED SOUTH 50° 16' 30" EAST ALONG THE CENTERLINE OF SAID BRANCH FOR A DISTANCE OF 130.14 FEET TO THE POINT OF BEGINNING,

LESS AND EXCEPT THE PINE MOUNTAIN TRAIL LOTS DESCRIBED AS FOLLOWS:

TRACT 1-1:

COMMENCE AT THE SOUTHEAST CORNER OF THE NORTHEAST QUARTER OF SECTION 24, TOWNSHIP 19 SOUTH, RANGE 1 WEST, SHELBY COUNTY, ALABAMA
THENCE RUN NORTH 00 DEGREES 43 MINUTES 19 SECONDS EAST ALONG THE



20210406000171000 21/28 \$105.00
Shelby Cnty Judge of Probate, AL
04/06/2021 10:28:37 AM FILED/CERT

EAST LINE OF SECTION 24 FOR 267.90 FEET; THENCE RUN NORTH 89 DEGREES 16 MINUTES 41 SECONDS WEST FOR 1384.10 FEET TO PINE MOUNTAIN TRAIL, A PRIVATE DRIVE AND THE POINT OF BEGINNING; THENCE RUN SOUTH 58 DEGREES 30 MINUTES 12 SECONDS WEST ALONG PINE MOUNTAIN TRAIL, A PRIVATE DRIVE FOR 50.61 FEET; THENCE RUN ALONG SAID PRIVATE DRIVE THE FOLLOWING COURSES: SOUTH 45 DEGREES 42 MINUTES 44 SECONDS WEST FOR 50.04 FEET; SOUTH 11 DEGREES 28 MINUTES 14 SECONDS EAST FOR 41.87 FEET; SOUTH 09 DEGREES 39 MINUTES 54 SECONDS EAST FOR 68.70 FEET; SOUTH 06 DEGREES 05 MINUTES 22 SECONDS EAST FOR 151.49 FEET; SOUTH 71 DEGREES 31 MINUTES 29 SECONDS WEST FOR 121.76 FEET; SOUTH 56 DEGREES 09 MINUTES 57 SECONDS WEST FOR 254.54 FEET; SOUTH 41 DEGREES 33 MINUTES 50 SECONDS WEST FOR 97.19 FEET; SOUTH 34 DEGREES 53 MINUTES 14 SECONDS WEST FOR 167.14 FEET; SOUTH 45 DEGREES 50 MINUTES 38 SECONDS WEST FOR 24.21 FEET; THENCE LEAVE SAID PRIVATE DRIVE AND RUN NORTH 40 DEGREES 10 MINUTES 28 SECONDS WEST FOR 107.43 FEET; THENCE RUN NORTH 16 DEGREES 58 MINUTES 37 SECONDS EAST FOR 104.66 FEET TO A POINT IN THE CENTER OF LITTLE CREEK; THENCE RUN ALONG SAID CREEK THE FOLLOWING COURSES: NORTH 31 DEGREES 35 MINUTES 52 SECONDS WEST FOR 76.78 FEET; NORTH 71 DEGREES 54 MINUTES 16 SECONDS WEST FOR 22.57 FEET; SOUTH 57 DEGREES 02 MINUTES 24 SECONDS WEST FOR 44.89 FEET; SOUTH 77 DEGREES 00 MINUTES 59 SECONDS WEST FOR 34.71 FEET; NORTH 65 DEGREES 04 MINUTES 57 SECONDS WEST FOR 86.64 FEET; NORTH 76 DEGREES 12 MINUTES 44 SECONDS WEST FOR 31.14 FEET; NORTH 16 DEGREES 31 MINUTES 41 SECONDS WEST FOR 35.51 FEET; NORTH 05 DEGREES 05 MINUTES 22 SECONDS EAST FOR 78.33 FEET; NORTH 41 DEGREES 48 MINUTES 57 SECONDS WEST FOR 76.72 FEET; NORTH 06 DEGREES 22 MINUTES 34 SECONDS WEST FOR 72.21 FEET; NORTH 20 DEGREES 47 MINUTES 44 SECONDS WEST FOR 175.74 FEET; NORTH 00 DEGREES 28 MINUTES 28 SECONDS EAST FOR 54.30 FEET; NORTH 42 DEGREES 18 MINUTES 14 SECONDS WEST FOR 93.87 FEET TO THE END OF SAID CREEK; THENCE LEAVING SAID CREEK RUN NORTH 46 DEGREES 13 MINUTES 41 SECONDS EAST FOR 38.74 FEET TO THE WATER'S EDGE OF HARGIS LAKE; THENCE RUN ALONG SAID WATER'S EDGE THE FOLLOWING COURSES: NORTH 18 DEGREES 45 MINUTES 29 SECONDS WEST FOR 59.50 FEET; NORTH 09 DEGREES 04 MINUTES 02 SECONDS WEST FOR 108.27 FEET; NORTH 04 DEGREES 00 MINUTES 28 SECONDS WEST FOR 79.01 FEET; NORTH 23 DEGREES 24 MINUTES 46 SECONDS EAST FOR 108.24 FEET; NORTH 42 DEGREES 19 MINUTES 32 SECONDS EAST FOR 117.64 FEET; NORTH 56 DEGREES 04 MINUTES 35 SECONDS EAST FOR 120.99 FEET; NORTH 42 DEGREES 24 MINUTES 09 SECONDS EAST FOR 106.58 FEET; NORTH 21 DEGREES 15 MINUTES 44 SECONDS EAST FOR 52.27 FEET; NORTH 54 DEGREES 50 MINUTES 02 SECONDS EAST FOR 80.34 FEET; NORTH 61 DEGREES 31 MINUTES 42 SECONDS EAST FOR 28.72 FEET; THENCE LEAVING SAID WATER'S EDGE RUN SOUTH 38 DEGREES 47 MINUTES 24 SECONDS EAST FOR 997.63 FEET TO PINE MOUNTAIN TRAIL, A PRIVATE DRIVE AND THE POINT OF BEGINNING. SAID TRACT OF LAND CONTAINING 20.30 ACRES MORE OR LESS.

TRACT 1-2:

COMMENCE AT THE SOUTHEAST CORNER OF THE NORTHEAST QUARTER OF SECTION 24, TOWNSHIP 19 SOUTH, RANGE 1 WEST, SHELBY COUNTY, ALABAMA; THENCE RUN NORTH 00 DEGREES 43 MINUTES 19 SECONDS EAST ALONG THE EAST LINE OF SECTION 24 FOR 267.90 FEET; THENCE RUN NORTH 89 DEGREES 16 MINUTES

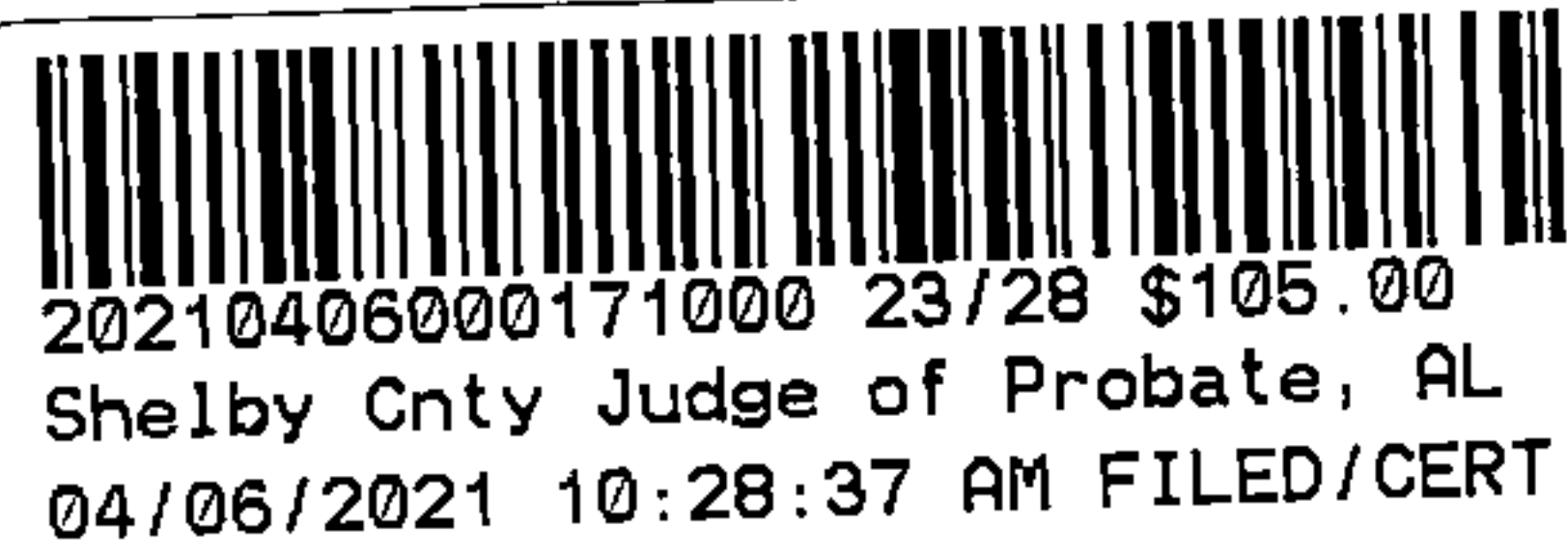


20210406000171000 22/28 \$105.00
Shelby Cnty Judge of Probate, AL
04/06/2021 10:28:37 AM FILED/CERT

41 SECONDS WEST FOR 1384.10 FEET TO PINE MOUNTAIN TRAIL, A PRIVATE DRIVE AND THE POINT OF BEGINNING; THENCE RUN NORTH 38 DEGREES 47 MINUTES 24 SECONDS WEST FOR 997.63 FEET TO THE WATER'S EDGE OF HARGIS LAKE; THENCE RUN ALONG SAID WATER'S EDGE THE FOLLOWING COURSES: NORTH 61 DEGREES 57 MINUTES 07 SECONDS EAST FOR 207.51 FEET; NORTH 34 DEGREES 42 MINUTES 59 SECONDS EAST FOR 189.15 FEET; THENCE LEAVING SAID WATER'S EDGE RUN SOUTH 56 DEGREES 52 MINUTES 46 SECONDS EAST FOR 127.00 FEET; THENCE RUN NORTH 55 DEGREES 25 MINUTES 29 SECONDS EAST FOR 472.59 FEET; THENCE RUN SOUTH 42 DEGREES 57 MINUTES 53 SECONDS EAST FOR 826.84 FEET TO PINE MOUNTAIN TRAIL, A PRIVATE DRIVE; THENCE RUN ALONG SAID DRIVE THE FOLLOWING COURSES: SOUTH 41 DEGREES 42 MINUTES 44 SECONDS WEST FOR 151.25 FEET; SOUTH 30 DEGREES 34 MINUTES 48 SECONDS WEST FOR 112.33 FEET; SOUTH 57 DEGREES 36 MINUTES 32 SECONDS WEST FOR 120.17 FEET; SOUTH 52 DEGREES 36 MINUTES 52 SECONDS WEST FOR 117.29 FEET; SOUTH 51 DEGREES 02 MINUTES 32 SECONDS WEST FOR 69.38 FEET; SOUTH 29 DEGREES 33 MINUTES 55 SECONDS WEST FOR 79.45 FEET; SOUTH 25 DEGREES 48 MINUTES 48 SECONDS WEST FOR 42.60 FEET; SOUTH 65 DEGREES 47 MINUTES 18 SECONDS WEST FOR 57.65 FEET; SOUTH 53 DEGREES 08 MINUTES 02 SECONDS WEST FOR 75.13 FEET; SOUTH 58 DEGREES 49 MINUTES 52 SECONDS WEST FOR 70.24 FEET; SOUTH 75 DEGREES 19 MINUTES 47 SECONDS WEST FOR 90.90 FEET THE POINT OF BEGINNING. SAID TRACT OF LAND CONTAINING 20.08 ACRES MORE OR LESS.

TRACT 1-3:

COMMENCE AT THE NORTHEAST CORNER OF SECTION 24, TOWNSHIP 19 SOUTH, RANGE 1 WEST, SHELBY COUNTY, ALABAMA; THENCE RUN SOUTH 00 DEGREES 43 MINUTES 19 SECONDS WEST ALONG THE EAST LINE OF SAID SECTION 24 FOR 84.00 FEET TO THE POINT OF BEGINNING; THENCE CONTINUE SOUTH 00 DEGREES 43 MINUTES 19 SECONDS WEST FOR 87.35 FEET; THENCE RUN SOUTH 46 DEGREES 43 MINUTES 21 SECONDS WEST FOR 936.67 FEET; THENCE RUN SOUTH 38 DEGREES 50 MINUTES 27 SECONDS EAST FOR 564.14 FEET; THENCE RUN SOUTH 44 DEGREES 58 MINUTES 31 SECONDS WEST FOR 141.15 FEET; THENCE RUN SOUTH 43 DEGREES 19 MINUTES 31 SECONDS WEST FOR 137.94 FEET; THENCE RUN SOUTH 46 DEGREES 51 MINUTES 45 SECONDS WEST FOR 78.64 FEET; THENCE RUN SOUTH 41 DEGREES 27 MINUTES 50 SECONDS WEST FOR 108.83 FEET; THENCE RUN SOUTH 10 DEGREES 52 MINUTES 36 SECONDS WEST FOR 97.09 FEET; THENCE RUN SOUTH 41 DEGREES 42 MINUTES 44 SECONDS WEST FOR 24.27 FEET; THENCE RUN NORTH 42 DEGREES 57 MINUTES 53 SECONDS WEST FOR 826.84 FEET; THENCE RUN SOUTH 55 DEGREES 25 MINUTES 29 SECONDS WEST FOR 472.59 FEET; THENCE RUN NORTH 56 DEGREES 52 MINUTES 46 SECONDS WEST FOR 127.00 FEET; THENCE RUN NORTH 63 DEGREES 20 MINUTES 32 SECONDS EAST FOR 115.09 FEET; THENCE RUN NORTH 19 DEGREES 59 MINUTES 08 SECONDS EAST FOR 45.34 FEET; THENCE RUN NORTH 06 DEGREES 12 MINUTES 53 SECONDS WEST FOR 37.01 FEET; THENCE RUN NORTH 20 DEGREES 00 MINUTES 00 SECONDS WEST FOR 20.00 FEET; THENCE RUN NORTH 56 DEGREES 06 MINUTES 12 SECONDS EAST FOR 438.87 FEET; THENCE RUN NORTH 89 DEGREES 17 MINUTES 37 SECONDS EAST FOR 155.71 FEET; THENCE RUN NORTH 31 DEGREES 45 MINUTES 34 SECONDS EAST FOR 523.96 FEET; THENCE RUN NORTH 61 DEGREES 42 MINUTES 19 SECONDS EAST FOR 496.83 FEET; THENCE RUN NORTH 54 DEGREES 36 MINUTES 08 SECONDS EAST FOR 375.06 FEET; THENCE RUN SOUTH 50 DEGREES 16 MINUTES 30 SECONDS EAST FOR 130.14 FEET TO THE POINT OF BEGINNING. SAID TRACT OF LAND CONTAINING 874,933.12 S.F. OR 20.09 ACRES MORE OR LESS.



TRACT 1-11H:

COMMENCE AT THE NORTHWEST CORNER OF SECTION 19, TOWNSHIP 19 SOUTH, RANGE 1 EAST, SHELBY COUNTY, ALABAMA; THENCE RUN SOUTH 00 DEGREES 43 MINUTES 19 SECONDS WEST ALONG THE WEST LINE OF SAID SECTION 19 FOR 171.36 FEET TO THE POINT OF BEGINNING; THENCE RUN NORTH 59 DEGREES 31 MINUTES 01 SECONDS EAST FOR 408.04 FEET; THENCE RUN SOUTH 72 DEGREES 38 MINUTES 04 SECONDS EAST FOR 60.92 FEET; THENCE RUN NORTH 74 DEGREES 14 MINUTES 28 SECONDS EAST FOR 91.78 FEET; THENCE RUN NORTH 54 DEGREES 34 MINUTES 55 SECONDS EAST FOR 238.09 FEET; THENCE RUN SOUTH 36 DEGREES 53 MINUTES 20 SECONDS EAST FOR 244.84 FEET; THENCE RUN SOUTH 38 DEGREES 14 MINUTES 41 SECONDS WEST FOR 304.16 FEET; THENCE RUN SOUTH 03 DEGREES 21 MINUTES 32 SECONDS EAST FOR 208.79 FEET; THENCE RUN SOUTH 69 DEGREES 44 MINUTES 13 SECONDS WEST FOR 157.70 FEET; THENCE RUN SOUTH 48 DEGREES 40 MINUTES 45 SECONDS WEST FOR 399.01 FEET; THENCE RUN SOUTH 51 DEGREES 49 MINUTES 57 SECONDS WEST FOR 286.65 FEET; THENCE RUN SOUTH 50 DEGREES 18 MINUTES 39 SECONDS WEST FOR 179.40 FEET; THENCE RUN SOUTH 44 DEGREES 58 MINUTES 31 SECONDS WEST FOR 254.90 FEET; THENCE RUN NORTH 38 DEGREES 50 MINUTES 27 SECONDS WEST FOR 564.14 FEET; THENCE RUN NORTH 46 DEGREES 43 MINUTES 21 SECONDS EAST FOR 936.67 FEET; THENCE RUN NORTH 59 DEGREES 31 MINUTES 01 SECONDS EAST FOR 408.04 FEET TO THE POINT OF BEGINNING.

LESS AND EXCEPT LAND WITHIN THE CORPORATE LIMITS OF WESTOVER AND A CONSERVATION EASEMENT MORE PARTICULARLY DESCRIBED AS FOLLOWS:

COMMENCE AT THE NORTHWEST CORNER OF SECTION 19, TOWNSHIP 19 SOUTH, RANGE 1 EAST, SHELBY COUNTY, ALABAMA; THENCE RUN SOUTH 00 DEGREES 43 MINUTES 19 SECONDS WEST ALONG THE WEST LINE OF SAID SECTION 19 FOR 171.36 FEET TO THE POINT OF BEGINNING; THENCE RUN NORTH 59 DEGREES 31 MINUTES 01 SECONDS EAST FOR 408.04 FEET; THENCE RUN SOUTH 72 DEGREES 38 MINUTES 04 SECONDS EAST FOR 60.92 FEET; THENCE RUN NORTH 74 DEGREES 14 MINUTES 28 SECONDS EAST FOR 91.78 FEET; THENCE RUN NORTH 54 DEGREES 34 MINUTES 55 SECONDS EAST FOR 238.09 FEET; THENCE RUN SOUTH 36 DEGREES 53 MINUTES 20 SECONDS EAST FOR 244.84 FEET; THENCE RUN SOUTH 38 DEGREES 14 MINUTES 41 SECONDS WEST FOR 304.16 FEET; THENCE RUN SOUTH 03 DEGREES 21 MINUTES 32 SECONDS EAST FOR 208.79 FEET; THENCE RUN SOUTH 69 DEGREES 44 MINUTES 13 SECONDS WEST FOR 157.70 FEET; THENCE RUN SOUTH 48 DEGREES 40 MINUTES 45 SECONDS WEST FOR 399.01 FEET; THENCE RUN SOUTH 51 DEGREES 49 MINUTES 57 SECONDS WEST FOR 286.65 FEET; THENCE RUN NORTH 00 DEGREES 43 MINUTES 19 SECONDS EAST FOR 786.69 FEET TO THE POINT OF BEGINNING.
SAID TRACT OF LAND CONTAINING 8.84 ACRES MORE OR LESS.

TRACT 1-12H:

COMMENCE AT THE NORTHEAST CORNER OF SECTION 24, TOWNSHIP 19 SOUTH, RANGE 1 WEST, SHELBY COUNTY, ALABAMA ; THENCE RUN SOUTH 00 DEGREES 43 MINUTES 19 SECONDS WEST ALONG THE EAST LINE OF SAID SECTION 24 FOR 958.05 FEET TO THE POINT OF BEGINNING ; THENCE RUN NORTH 51 DEGREES 49 MINUTES 57 SECONDS EAST FOR 286.65 FEET;
THENCE RUN SOUTH 31 DEGREES 59 MINUTES 50 SECONDS EAST FOR 995.04 FEET;
THENCE RUN SOUTH 49 DEGREES 12 MINUTES 32 SECONDS WEST FOR 1016.23 FEET;



20210406000171000 24/28 \$105.00
Shelby Cnty Judge of Probate, AL
04/06/2021 10:28:37 AM FILED/CERT

THENCE RUN NORTH 00 DEGREES 43 MINUTES 19 SECONDS EAST FOR 130.60 FEET;
THENCE RUN NORTH 51 DEGREES 16 MINUTES 27 SECONDS WEST FOR 240.38 FEET;
THENCE RUN NORTH 46 DEGREES 36 MINUTES 36 SECONDS WEST FOR 158.47 FEET;
THENCE RUN NORTH 19 DEGREES 13 MINUTES 52 SECONDS WEST FOR 201.72 FEET;
THENCE RUN NORTH 65 DEGREES 03 MINUTES 21 SECONDS WEST FOR 284.36 FEET;
THENCE RUN NORTH 41 DEGREES 27 MINUTES 50 SECONDS EAST FOR 108.83 FEET;
THENCE RUN NORTH 46 DEGREES 51 MINUTES 45 SECONDS EAST FOR 78.64 FEET;
THENCE RUN NORTH 43 DEGREES 19 MINUTES 31 SECONDS EAST FOR 137.94 FEET;
THENCE RUN NORTH 44 DEGREES 58 MINUTES 31 SECONDS EAST FOR 191.44 FEET;
THENCE RUN NORTH 44 DEGREES 58 MINUTES 31 SECONDS EAST FOR 396.05 FEET;
THENCE RUN NORTH 50 DEGREES 18 MINUTES 39 SECONDS EAST FOR 179.40 FEET
TO THE POINT OF BEGINNING..

LESS AND EXCEPT LAND WITHIN THE CORPORATE LIMITS OF WESTOVER AND A
CONSERVATION EASEMENT MORE PARTICULARLY DESCRIBED AS FOLLOWS:
COMMENCE AT THE NORTHWEST CORNER OF SECTION 19, TOWNSHIP 19 SOUTH,
RANGE 1 EAST, SHELBY COUNTY, ALABAMA; THENCE RUN SOUTH 00 DEGREES 43
MINUTES 19 SECONDS WEST ALONG THE WEST LINE OF SAID SECTION 19 FOR 958.05
FEET TO THE POINT OF BEGINNING ; THENCE RUN NORTH 51 DEGREES 49 MINUTES
57 SECONDS EAST FOR 286.65 FEET; THENCE RUN SOUTH 31 DEGREES 59 MINUTES
50 SECONDS EAST FOR 995.04 FEET; THENCE RUN SOUTH 49 DEGREES 12 MINUTES
32 SECONDS WEST FOR 1016.23 FEET TO A POINT ON THE WEST LINE OF SAID
SECTION 19; THENCE RUN NORTH 00 DEGREES 43 MINUTES 19 SECONDS EAST
ALONG THE WEST LINE OF SAID SECTION 19 FOR 1330.74 FEET TO THE POINT OF
BEGINNING. SAID TRACT OF LAND CONTAINING 8.61 ACRES MORE OR LESS

TRACT 1-6:

BEGIN AT THE SOUTHEAST CORNER OF THE SOUTHEAST QUARTER OF THE
NORTHEAST QUARTER OF SECTION 24, TOWNSHIP 19 SOUTH, RANGE 1 WEST ;
THENCE RUN SOUTH 89 DEGREES 47 MINUTES 00 SECONDS WEST ALONG THE
SOUTH LINE OF SAID 1/4 - 1/4 SECTION FOR 63.82 FEET; THENCE RUN SOUTH 65
DEGREES 48 MINUTES 02 SECONDS WEST FOR 46.65 FEET; THENCE RUN NORTH 37
DEGREES 17 MINUTES 11 SECONDS WEST FOR 64.82 FEET; THENCE RUN NORTH 29
DEGREES 44 MINUTES 08 SECONDS WEST FOR 129.36 FEET; THENCE RUN SOUTH 80
DEGREES 46 MINUTES 33 SECONDS WEST FOR 126.31 FEET; THENCE RUN SOUTH 54
DEGREES 11 MINUTES 07 SECONDS WEST FOR 159.46 FEET; THENCE RUN SOUTH 81
DEGREES 13 MINUTES 30 SECONDS WEST FOR 108.52 FEET; THENCE RUN NORTH 85
DEGREES 34 MINUTES 12 SECONDS WEST FOR 75.93 FEET; THENCE RUN NORTH 81
DEGREES 19 MINUTES 39 SECONDS WEST FOR 273.98 FEET; THENCE RUN SOUTH 64
DEGREES 07 MINUTES 51 SECONDS WEST FOR 81.89 FEET; THENCE RUN SOUTH 79
DEGREES 43 MINUTES 00 SECONDS WEST FOR 138.61 FEET; THENCE RUN SOUTH 89
DEGREES 09 MINUTES 08 SECONDS WEST FOR 208.27 FEET; THENCE RUN SOUTH 69
DEGREES 05 MINUTES 39 SECONDS WEST FOR 93.94 FEET; THENCE RUN NORTH 06
DEGREES 05 MINUTES 22 SECONDS WEST FOR 151.49 FEET; THENCE RUN NORTH 09
DEGREES 39 MINUTES 54 SECONDS WEST FOR 68.70 FEET; THENCE RUN NORTH 11
DEGREES 28 MINUTES 14 SECONDS WEST FOR 41.87 FEET; THENCE RUN NORTH 45
DEGREES 42 MINUTES 44 SECONDS EAST FOR 50.04 FEET; THENCE RUN NORTH 58
DEGREES 30 MINUTES 12 SECONDS EAST FOR 50.61 FEET; THENCE RUN NORTH 75
DEGREES 19 MINUTES 47 SECONDS EAST FOR 90.90 FEET; THENCE RUN NORTH 58



20210406000171000 25/28 \$105.00
Shelby Cnty Judge of Probate, AL
04/06/2021 10:28:37 AM FILED/CERT

DEGREES 49 MINUTES 52 SECONDS EAST FOR 70.24 FEET; THENCE RUN NORTH 53 DEGREES 08 MINUTES 02 SECONDS EAST FOR 75.13 FEET; THENCE RUN NORTH 65 DEGREES 47 MINUTES 18 SECONDS EAST FOR 57.65 FEET; THENCE RUN NORTH 25 DEGREES 48 MINUTES 48 SECONDS EAST FOR 42.60 FEET; THENCE RUN NORTH 29 DEGREES 33 MINUTES 55 SECONDS EAST FOR 79.45 FEET; THENCE RUN NORTH 51 DEGREES 02 MINUTES 32 SECONDS EAST FOR 69.38 FEET; THENCE RUN NORTH 52 DEGREES 36 MINUTES 52 SECONDS EAST FOR 117.29 FEET; THENCE RUN NORTH 57 DEGREES 36 MINUTES 32 SECONDS EAST FOR 120.17 FEET; THENCE RUN NORTH 30 DEGREES 34 MINUTES 48 SECONDS EAST FOR 112.33 FEET; THENCE RUN NORTH 41 DEGREES 42 MINUTES 44 SECONDS EAST FOR 175.52 FEET; THENCE RUN NORTH 10 DEGREES 52 MINUTES 36 SECONDS EAST FOR 97.09 FEET; THENCE RUN SOUTH 65 DEGREES 03 MINUTES 21 SECONDS EAST FOR 284.36 FEET; THENCE RUN SOUTH 19 DEGREES 13 MINUTES 52 SECONDS EAST FOR 201.72 FEET; THENCE RUN SOUTH 46 DEGREES 36 MINUTES 36 SECONDS EAST FOR 158.47 FEET; THENCE RUN SOUTH 51 DEGREES 16 MINUTES 27 SECONDS EAST FOR 240.38 FEET TO A POINT ON THE EAST LINE OF SAID 1/4 - 1/4 SECTION; THENCE RUN SOUTH 00 DEGREES 43 MINUTES 19 SECONDS WEST ALONG THE EAST LINE OF SAID 1/4 - 1/4 SECTION FOR 453.57 FEET TO THE POINT OF BEGINNING. SAID TRACT OF LAND CONTAINING 871,888.69 S.F. OR 20.02 ACRE

TRACT 1-7: COMMENCE AT THE SOUTHEAST CORNER OF THE SOUTHEAST QUARTER OF THE NORTHEAST QUARTER OF SECTION 24, TOWNSHIP 19 SOUTH, RANGE 1 WEST, SHELBY COUNTY, ALABAMA; THENCE RUN SOUTH 89 DEGREES 47 MINUTES 00 SECONDS WEST AND RUN ALONG THE SOUTH LINE OF SAID 1/4 - 1/4 SECTION FOR 63.82 FEET; THENCE RUN SOUTH 65 DEGREES 48 MINUTES 02 SECONDS WEST FOR 46.65 FEET TO THE POINT OF BEGINNING; THENCE RUN SOUTH 65 DEGREES 48 MINUTES 02 SECONDS WEST FOR 291.05 FEET; THENCE RUN SOUTH 52 DEGREES 16 MINUTES 22 SECONDS WEST FOR 290.56 FEET; THENCE RUN SOUTH 40 DEGREES 26 MINUTES 18 SECONDS WEST FOR 245.25 FEET; THENCE RUN SOUTH 55 DEGREES 02 MINUTES 15 SECONDS WEST FOR 181.61 FEET; THENCE RUN SOUTH 62 DEGREES 23 MINUTES 15 SECONDS WEST FOR 121.50 FEET; THENCE RUN SOUTH 70 DEGREES 05 MINUTES 45 SECONDS WEST FOR 199.18 FEET; THENCE RUN SOUTH 59 DEGREES 27 MINUTES 05 SECONDS WEST FOR 193.03 FEET; THENCE RUN SOUTH 56 DEGREES 54 MINUTES 25 SECONDS WEST FOR 177.53 FEET; THENCE RUN NORTH 40 DEGREES 10 MINUTES 28 SECONDS WEST FOR 633.29 FEET; THENCE RUN NORTH 45 DEGREES 50 MINUTES 38 SECONDS EAST FOR 24.21 FEET; THENCE RUN NORTH 34 DEGREES 53 MINUTES 14 SECONDS EAST FOR 167.14 FEET; THENCE RUN NORTH 41 DEGREES 33 MINUTES 50 SECONDS EAST FOR 97.19 FEET; THENCE RUN NORTH 56 DEGREES 09 MINUTES 57 SECONDS EAST FOR 254.54 FEET; THENCE RUN NORTH 71 DEGREES 31 MINUTES 29 SECONDS EAST FOR 121.76 FEET; THENCE RUN NORTH 69 DEGREES 05 MINUTES 39 SECONDS EAST FOR 93.94 FEET; THENCE RUN NORTH 89 DEGREES 09 MINUTES 08 SECONDS EAST FOR 208.27 FEET; THENCE RUN NORTH 79 DEGREES 43 MINUTES 00 SECONDS EAST FOR 138.61 FEET; THENCE RUN NORTH 64 DEGREES 07 MINUTES 51 SECONDS EAST FOR 81.89 FEET; THENCE RUN SOUTH 81 DEGREES 19 MINUTES 39 SECONDS EAST FOR 273.98 FEET; THENCE RUN SOUTH 85 DEGREES 34 MINUTES 12 SECONDS EAST FOR 75.93 FEET; THENCE RUN NORTH 81 DEGREES 13 MINUTES 30 SECONDS EAST FOR 108.52 FEET; THENCE RUN NORTH 54 DEGREES 11 MINUTES 07 SECONDS EAST FOR 159.46 FEET; THENCE RUN NORTH 80 DEGREES 46 MINUTES 33 SECONDS EAST FOR 126.31 FEET; THENCE RUN SOUTH 29 DEGREES 44

MINUTES 08 SECONDS EAST FOR 129.36 FEET; THENCE RUN SOUTH 37 DEGREES 17 MINUTES 11 SECONDS EAST FOR 64.82 FEET TO THE POINT OF BEGINNING. SAID TRACT OF LAND CONTAINING 21.03 ACRES MORE OR LESS.

THE ABOVE DESCRIBED LAND IS LOCATED IN THE NORTHEAST ONE-FOURTH OF THE NORTHEAST ONE-FOURTH, THE SOUTHEAST ONE-FOURTH OF THE NORTHEAST ONE-FOURTH, THE NORTHEAST ONE-FOURTH OF THE SOUTHEAST ONE-FOURTH, THE NORTHWEST ONE-FOURTH OF THE SOUTHEAST ONE-FOURTH, THE SOUTHWEST ONE-FOURTH OF THE SOUTHEAST ONE-FOURTH, THE SOUTHEAST ONE-FOURTH OF THE NORTHWEST ONE-FOURTH, THE SOUTHWEST ONE-FOURTH OF THE NORTHEAST ONE-FOURTH, THE NORTHEAST ONE-FOURTH OF THE NORTHWEST ONE-FOURTH AND THE NORTHWEST ONE-FOURTH OF THE NORTHEAST ONE-FOURTH OF SECTION 24 AND THE NORTHWEST ONE-FOURTH OF THE NORTHWEST ONE-FOURTH AND THE SOUTHWEST ONE-FOURTH OF THE NORTHWEST ONE-FOURTH OF SECTION 19 AND THE SOUTHWEST ONE-FOURTH OF THE SOUTHWEST ONE-FOURTH OF SECTION 18, TOWNSHIP 19 SOUTH, RANGE 1 WEST, SHELBY COUNTY, ALABAMA AND CONTAINS 67.89 ACRES.



20210406000171000 26/28 \$105.00
Shelby Cnty Judge of Probate, AL
04/06/2021 10:28:37 AM FILED/CERT

PARCEL NO. M- 2:

COMMENCE AT A ½" REBAR IN PLACE BEING THE NORTHWEST CORNER OF THE NORTHWEST ONE-FOURTH OF THE SOUTHEAST ONE-FOURTH OF SECTION 24, TOWNSHIP 19 SOUTH, RANGE 1 WEST, SHELBY COUNTY, ALABAMA, SAID POINT ALSO BEING THE POINT OF BEGINNING. FROM THIS BEGINNING POINT PROCEED NORTH 88° 24' 49" EAST ALONG THE SOUTH RIGHT-OF-WAY OF GIRL SCOUT ROAD FOR A DISTANCE OF 28.79 FEET TO ITS POINT OF INTERSECTION WITH THE WESTERLY RIGHT-OF-WAY OF HARGIS DRIVE (SHELBY COUNTY ROAD); THENCE PROCEED SOUTHEASTERLY ALONG THE WESTERLY RIGHT-OF-WAY OF SAID HARGIS DRIVE AND ALONG THE CURVATURE OF A CONCAVE CURVE RIGHT HAVING A DELTA ANGLE OF 81° 37' 44" AND A RADIUS OF 436.21 FEET FOR A CHORD BEARING AND DISTANCE OF SOUTH 26° 43' 03" EAST, 570.23 FEET TO A CONCRETE MONUMENT IN PLACE; THENCE PROCEED SOUTH 13° 34' 44" WEST ALONG THE WESTERLY RIGHT-OF-WAY OF SAID HARGIS DRIVE FOR A DISTANCE OF 738.95 FEET TO A ½" REBAR IN PLACE; THENCE PROCEED NORTH 87° 16' 38" WEST FOR A DISTANCE OF 78.71 FEET TO A ½" REBAR IN PLACE; THENCE PROCEED NORTH 01° 10' 47" WEST FOR A DISTANCE OF 88.01 FEET TO A ½" CRIMP TOP PIPE IN PLACE; THENCE PROCEED SOUTH 88° 42' 50" WEST FOR A DISTANCE OF 104.95 FEET TO A ½" CRIMP TOP PIPE IN PLACE; THENCE PROCEED NORTH 01° 25' 11" WEST FOR A DISTANCE OF 584.77 FEET TO A ½" REBAR IN PLACE; THENCE PROCEED NORTH 88° 19' 04" EAST FOR A DISTANCE OF 104.83 FEET TO A ½" REBAR IN PLACE; THENCE PROCEED NORTH 01° 43' 44" WEST FOR A DISTANCE OF 550.05 FEET TO THE POINT OF BEGINNING.

THE ABOVE DESCRIBED LAND IS LOCATED IN THE NORTHWEST ONE-FOURTH OF THE SOUTHEAST ONE-FOURTH AND THE NORTHEAST ONE-FOURTH OF THE SOUTHWEST ONE-FOURTH OF SECTION 24, TOWNSHIP 19 SOUTH, RANGE 1 WEST, SHELBY COUNTY, ALABAMA AND CONTAINS 6.97 ACRES



20210406000171000 27/28 \$105.00
Shelby Cnty Judge of Probate, AL
04/06/2021 10:28:37 AM FILED/CERT

Real Estate Sales Validation Form

This Document must be filed in accordance with Code of Alabama 1975, Section 40-22-1

Grantor's Name Eddleman Residential, LLC
2700 Hwy. 280 Ste. 425
Mailing Address Birmingham, AL 35223

Grantee's Name Eddleman Residential, LLC
2700 Hwy. 280 Ste. 425
Mailing Address Birmingham, AL 35223

Property Address Metes Bounds

Date of Sale April 6, 2021

Total Purchase Price \$

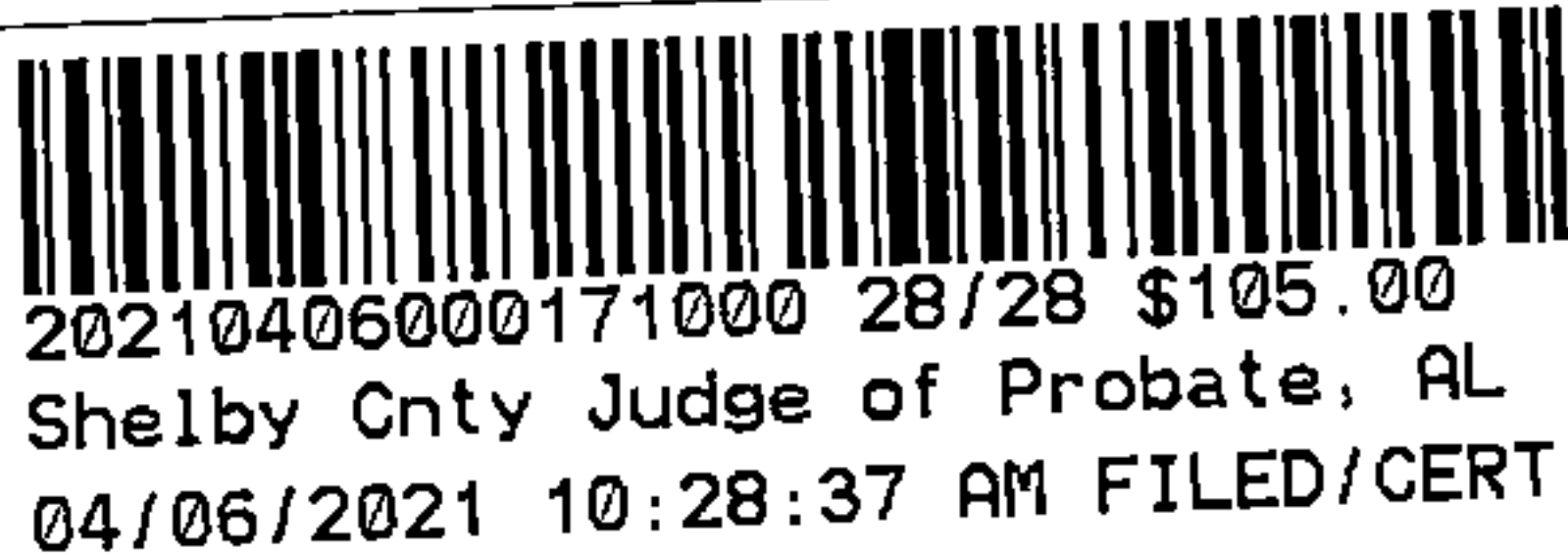
or

Actual Value \$

or

Assessor's Market Value \$ 1,001,674.00 and \$18,326.00

NOTE: CORRECTIVE
DEED - NO TAX TO BE
COLLECTED



The purchase price or actual value claimed on this form can be verified in the following documentary evidence:
(check one) (Recordation of documentary evidence is not required)

- ☐ Bill of Sale ☐ Appraisal
☐ Sales Contract ☒ Other - Deeds recorded in Inst. 20190325000094340 and 20190325000094350
☐ Closing Statement

If the conveyance document presented for recordation contains all of the required information referenced above, the filing of this form is not required.

Instructions

Grantor's name and mailing address - provide the name of the person or persons conveying interest to property and their current mailing address.

Grantee's name and mailing address - provide the name of the person or persons to whom interest to property is being conveyed.

Property address - the physical address of the property being conveyed, if available. Date of Sale - the date on which interest to the property was conveyed.

Total purchase price - the total amount paid for the purchase of the property, both real and personal, being conveyed by the instrument offered for record.

Actual value - if the property is not being sold, the true value of the property, both real and personal, being conveyed by the instrument offered for record. This may be evidenced by an appraisal conducted by a licensed appraiser or the assessor's current market value.

If no proof is provided and the value must be determined, the current estimate of fair market value, excluding current use valuation, of the property as determined by the local official charged with the responsibility of valuing property for property tax purposes will be used and the taxpayer will be penalized pursuant to Code of Alabama 1975 § 40-22-1 (h).

I attest, to the best of my knowledge and belief that the information contained in this document is true and accurate. I further understand that any false statements claimed on this form may result in the imposition of the penalty indicated in Code of Alabama 1975 § 40-22-1 (h).

Date _____

Eddleman Residential, LLC
Print by Douglas D. Eddleman, President & CEO

Unattested

(verified by)

Sign

(Grantor/Grantee/Owner/Agent) circle one