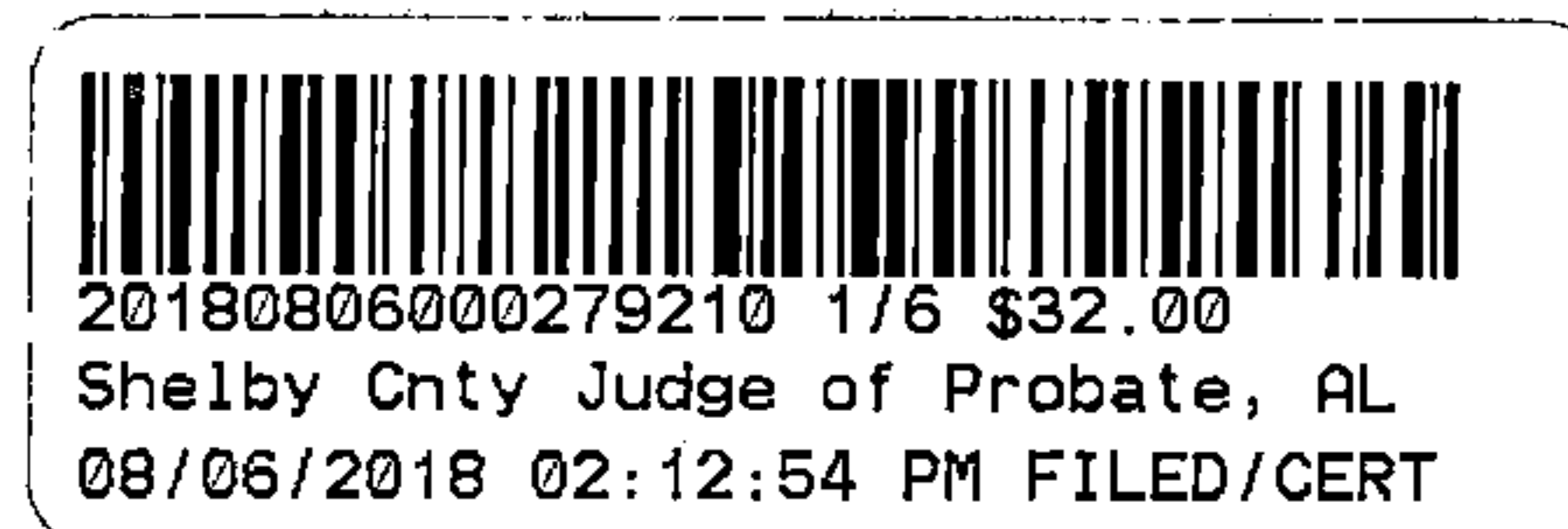


This Instrument was prepared by:
Clayton T. Sweeney, Attorney
2700 Highway 280 East, Suite 160
Birmingham, AL 35223



STATE OF ALABAMA)
COUNTY OF SHELBY)

PARTIAL RELEASE OF LIEN

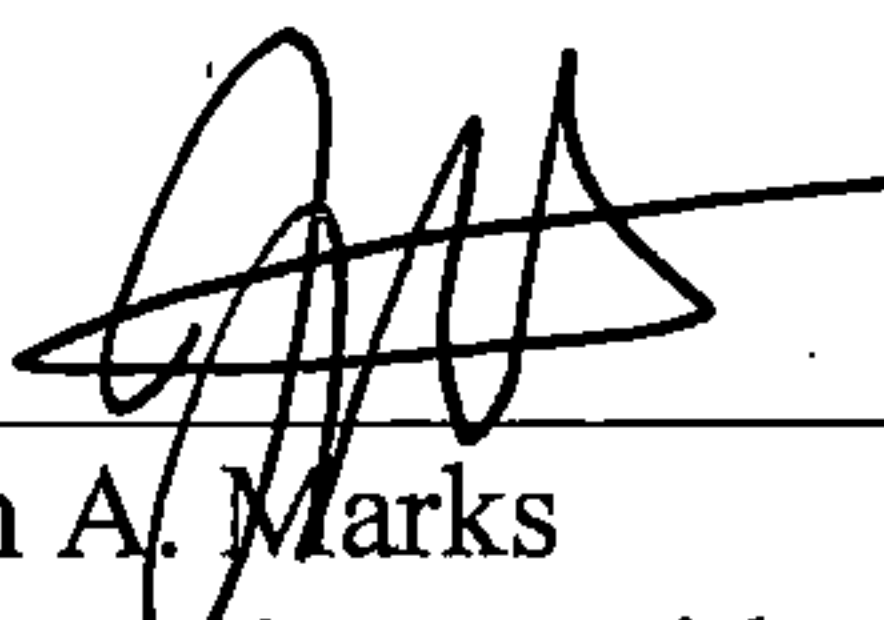
NATIONAL BANK OF COMMERCE, a national banking association (the "Lender"), is the owner and holder of certain indebtedness and a lien securing such indebtedness, which lien is evidenced by (i) that certain Mortgage executed by PINE MOUNTAIN PRESERVE, LLLP, a Delaware limited liability limited partnership (the "Borrower") in favor of the Lender and recorded on June 28, 2011 Instrument #20110628000187420 in the Probate Office of Shelby County, Alabama and (ii) that certain Assignment of Rents and Leases executed by the Borrower in favor of the Lender and recorded on June 28, 2011 in Instrument #20110628000187430 and First Amendment to Mortgage recorded in Instrument No. 20150904000310290, in the Probate Office of Shelby County, Alabama (collectively, the "Security Documents").

For value received, the Lender does hereby release from the lien and encumbrance of the Security Documents the property more particularly described in Exhibit "A" attached hereto and made part hereof.

Provided, however, that nothing contained in this Partial Release of Lien shall affect the lien of the Security Documents as to the remainder of the property described in the Security Documents, and the Security Documents shall remain in full force and effect in accordance with their terms with respect to all of such remaining property.

IN WITNESS WHEREOF, the Lender has executed this instrument as of July 17th, 2018.

LENDER:
NATIONAL BANK OF COMMERCE


By: John A. Marks
Its: Senior Vice President

State of Alabama)
County of Jefferson)

I, the undersigned authority, in and for said County in said State, hereby certify that John A. Marks, whose name as Senior Vice President of National Bank of Commerce, a national banking association, is signed to the foregoing instrument, and who is known to me, acknowledged before me on this day that, being informed of the contents of the instrument, he, as such Senior Vice President and with full authority, executed the same voluntarily, for and as the act of said national banking association.

Given under my hand and official seal this 17th day of July, 2018.


NOTARY PUBLIC
My commission expires:

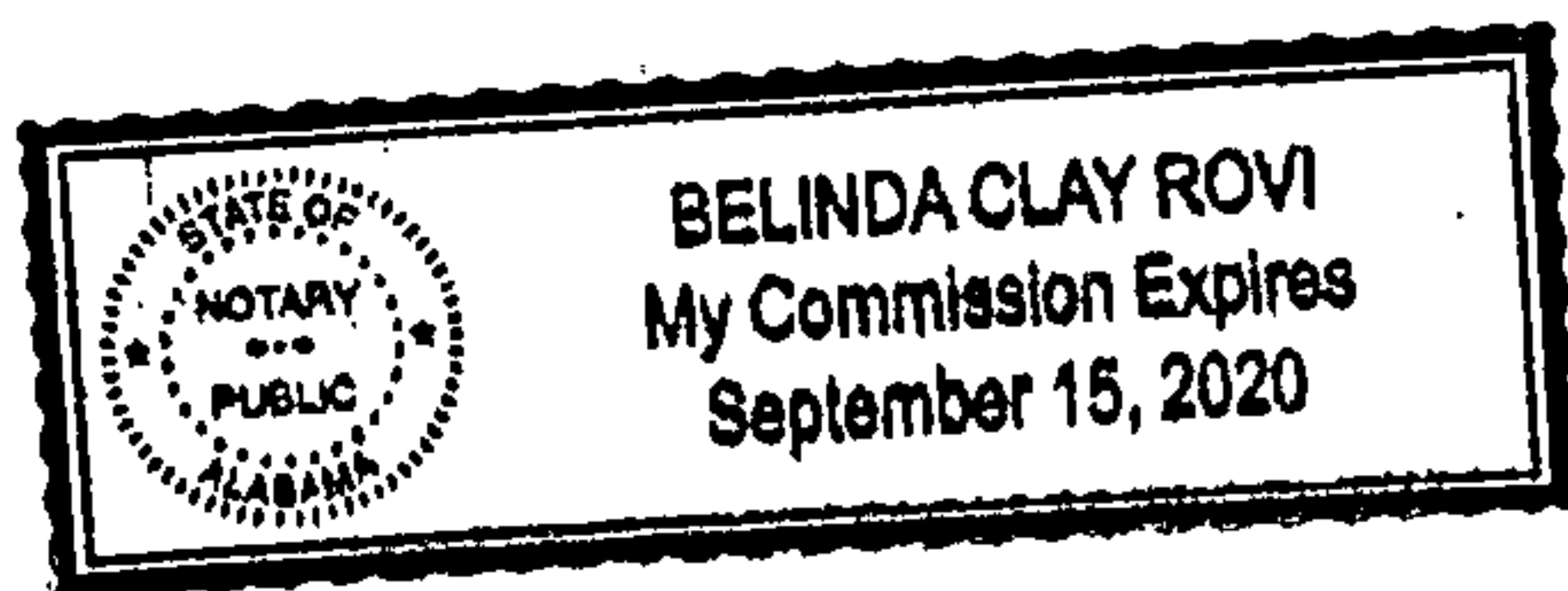
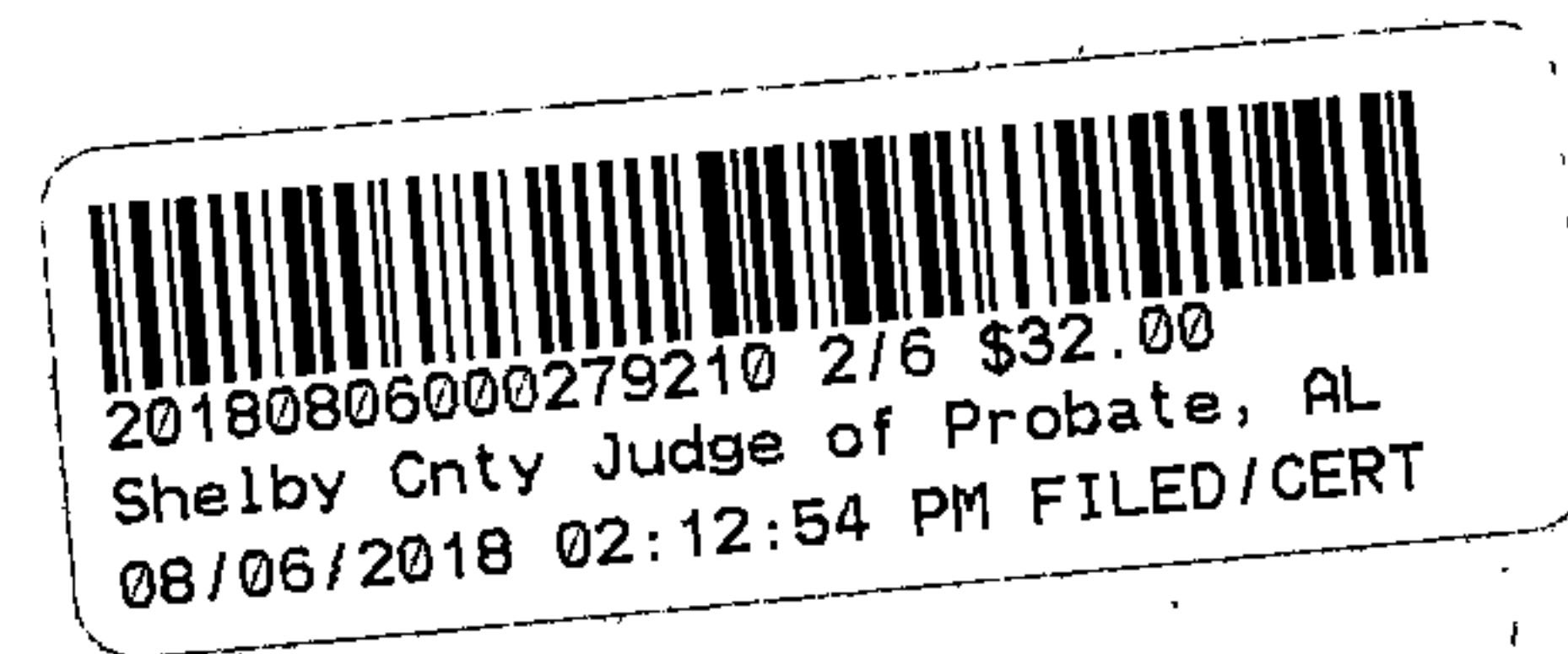


EXHIBIT "A"

A TRACT OF LAND LYING IN SECTION 18, TOWNSHIP 19 SOUTH, RANGE 1 EAST, SHELBY COUNTY, ALABAMA.

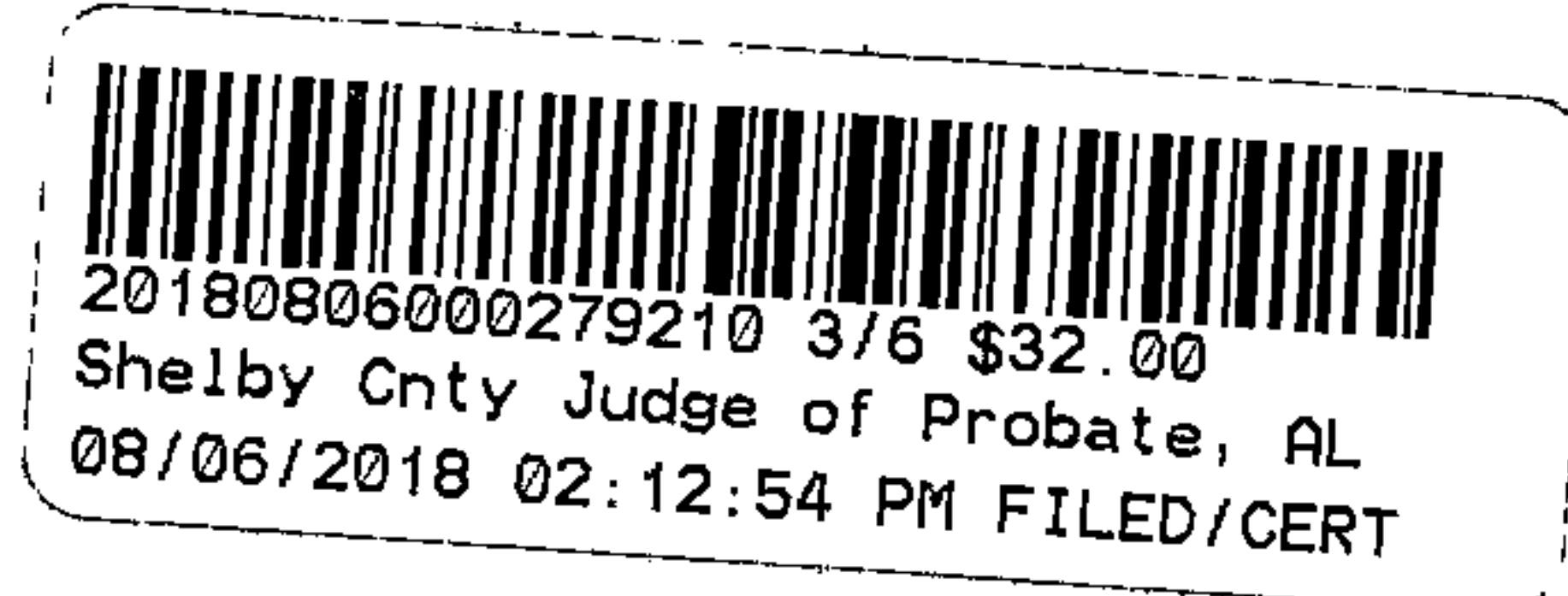
COMMENCE AT THE SOUTHWEST CORNER OF SECTION 18, TOWNSHIP 19 SOUTH, RANGE 1 EAST, THENCE RUN SOUTH 89°12'59" EAST ALONG THE SOUTH LINE OF SAID SECTION FOR 2102.02 FEET; THENCE RUN NORTH 00°47'01" EAST FOR 2090.60 FEET TO A POINT ON THE WATER'S EDGE OF GRANDFATHER LAKE AND THE POINT OF BEGINNING OF THE TRACT OF LAND HEREIN DESCRIBED; THENCE RUN NORTH 54°38'21" EAST A DISTANCE OF 257.58 FEET; THENCE RUN SOUTH 57°03'44" EAST A DISTANCE OF 33.17 FEET; THENCE RUN NORTH 76°32'58" EAST A DISTANCE OF 21.48 FEET; THENCE RUN NORTH 46°02'13" WEST A DISTANCE OF 289.83 FEET; THENCE RUN NORTH 42°49'16" WEST A DISTANCE OF 340.27 FEET; THENCE RUN NORTH 40°37'10" WEST A DISTANCE OF 1843.35 FEET; THENCE RUN SOUTH 41°16'09" WEST A DISTANCE OF 572.95 FEET; THENCE RUN SOUTH 49°40'40" EAST A DISTANCE OF 1825.81 FEET; THENCE RUN SOUTH 44°44'28" EAST A DISTANCE OF 199.56 FEET; THENCE RUN SOUTH 44°18'24" EAST A DISTANCE OF 324.43 FEET; TO THE POINT OF BEGINNING, LESS AND EXCEPT ANY PART LYING BELOW THE SEASONAL NORMAL POOL WATER LEVEL OF GRANDFATHER LAKE.

SAID TRACT CONTAINING AN AREA OF 935,164.34 SQUARE FEET, 21.47 ACRES.

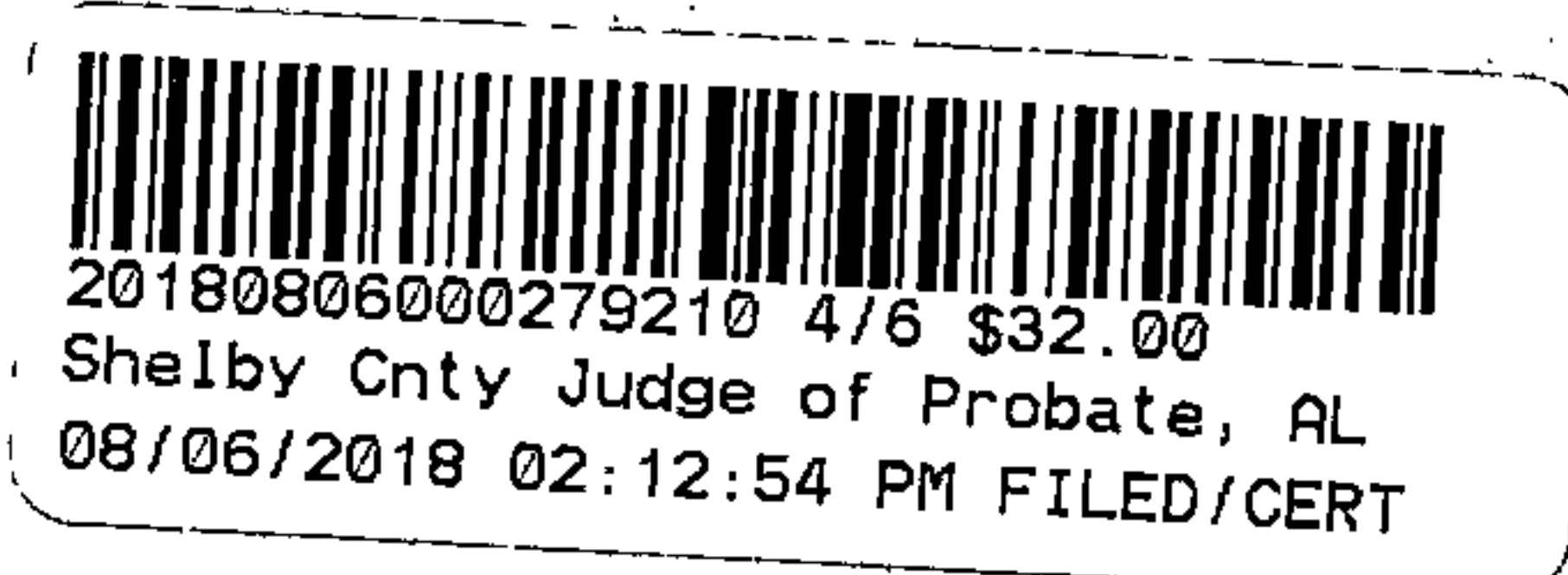


A 50 FOOT WIDE NON EXCLUSIVE INGRESS, EGRESS AND UTILITY EASEMENT BEING 25 FEET ON EACH SIDE OF AND PARALLEL TO THE FOLLOWING DESCRIBED CENTERLINE

COMMENCE AT THE NORTHWEST CORNER OF THE SOUTHWEST $\frac{1}{4}$ OF THE NORTHEAST $\frac{1}{4}$ OF SECTION 18, TOWNSHIP 19 SOUTH, RANGE 1 EAST. SHELBY COUNTY, ALABAMA; THENCE RUN SOUTH $00^{\circ}22'02''$ EAST FOR 1105.86 FEET; THENCE RUN SOUTH $89^{\circ}35'58''$ WEST FRO 239.98 FEET TO THE POINT OF BEGINNING OF SAID EASMENT CENTERLINE ; THENCE RUN NORTH 00 DEGREES 26 MINUTES 58 SECONDS WEST FOR 45.61 FEET; THENCE RUN NORTH 19 DEGREES 35 MINUTES 49 SECONDS EAST FOR 31.79 FEET; THENCE RUN NORTH 37 DEGREES 59 MINUTES 38 SECONDS EAST FOR 36.31 FEET; THENCE RUN NORTH 38 DEGREES 38 MINUTES 56 SECONDS EAST FOR 25.07 FEET; THENCE RUN NORTH 24 DEGREES 23 MINUTES 29 SECONDS EAST FOR 29.03 FEET; THENCE RUN NORTH 01 DEGREES 20 MINUTES 06 SECONDS EAST FOR 15.33 FEET; THENCE RUN NORTH 16 DEGREES 40 MINUTES 35 SECONDS WEST FOR 21.54 FEET; THENCE RUN NORTH 29 DEGREES 36 MINUTES 57 SECONDS WEST FOR 41.93 FEET; THENCE RUN NORTH 38 DEGREES 20 MINUTES 44 SECONDS WEST FOR 46.61 FEET; THENCE RUN NORTH 47 DEGREES 27 MINUTES 58 SECONDS WEST FOR 27.75 FEET; THENCE RUN NORTH 57 DEGREES 57 MINUTES 44 SECONDS WEST FOR 18.48 FEET; THENCE RUN NORTH 79 DEGREES 43 MINUTES 47 SECONDS WEST FOR 16.73 FEET; THENCE RUN SOUTH 82 DEGREES 22 MINUTES 47 SECONDS WEST FOR 54.71 FEET; THENCE RUN SOUTH 76 DEGREES 21 MINUTES 29 SECONDS WEST FOR 62.85 FEET; THENCE RUN SOUTH 88 DEGREES 24 MINUTES 24 SECONDS WEST FOR 18.70 FEET; THENCE RUN NORTH 71 DEGREES 33 MINUTES 29 SECONDS WEST FOR 27.44 FEET; THENCE RUN NORTH 34 DEGREES 46 MINUTES 23 SECONDS WEST FOR 22.84 FEET; THENCE RUN NORTH 00 DEGREES 29 MINUTES 17 SECONDS WEST FOR 28.44 FEET; THENCE RUN NORTH 06 DEGREES 21 MINUTES 53 SECONDS EAST FOR 33.48 FEET; THENCE RUN NORTH 01 DEGREES 11 MINUTES 29 SECONDS WEST FOR 58.76 FEET; THENCE RUN NORTH 04 DEGREES 43 MINUTES 03 SECONDS WEST FOR 80.42 FEET; THENCE RUN NORTH 18 DEGREES 57 MINUTES 03 SECONDS EAST FOR 17.74 FEET; THENCE RUN NORTH 37 DEGREES 34 MINUTES 53 SECONDS EAST FOR 100.19 FEET; THENCE RUN NORTH 37 DEGREES 47 MINUTES 00 SECONDS EAST FOR 103.61 FEET; THENCE RUN NORTH 44 DEGREES 56 MINUTES 51 SECONDS EAST FOR 28.99 FEET; THENCE RUN NORTH 52 DEGREES 00 MINUTES 37 SECONDS EAST FOR 71.26 FEET; THENCE RUN NORTH 52 DEGREES 28 MINUTES 30 SECONDS EAST FOR 109.21 FEET; THENCE RUN NORTH 45 DEGREES 06 MINUTES 06 SECONDS EAST FOR 70.57 FEET; THENCE RUN NORTH 38 DEGREES 38 MINUTES 50 SECONDS EAST FOR 65.81 FEET; THENCE RUN NORTH 31 DEGREES 35 MINUTES 37 SECONDS EAST FOR 63.74 FEET; THENCE RUN NORTH 24 DEGREES 06 MINUTES 06



SECONDS EAST FOR 47.13 FEET; THENCE RUN NORTH 16 DEGREES 40 MINUTES 34 SECONDS EAST FOR 17.81 FEET; THENCE RUN NORTH 37 DEGREES 44 MINUTES 01 SECONDS WEST FOR 8.83 FEET; THENCE RUN SOUTH 86 DEGREES 27 MINUTES 28 SECONDS WEST FOR 22.44 FEET; THENCE RUN SOUTH 77 DEGREES 49 MINUTES 17 SECONDS WEST FOR 28.56 FEET; THENCE RUN SOUTH 60 DEGREES 10 MINUTES 33 SECONDS WEST FOR 28.38 FEET; THENCE RUN SOUTH 62 DEGREES 38 MINUTES 02 SECONDS WEST FOR 15.20 FEET; THENCE RUN NORTH 72 DEGREES 33 MINUTES 38 SECONDS WEST FOR 12.29 FEET; THENCE RUN NORTH 48 DEGREES 30 MINUTES 32 SECONDS WEST FOR 15.48 FEET; THENCE RUN NORTH 40 DEGREES 26 MINUTES 20 SECONDS WEST FOR 34.95 FEET; THENCE RUN NORTH 49 DEGREES 04 MINUTES 12 SECONDS WEST FOR 34.52 FEET; THENCE RUN NORTH 56 DEGREES 33 MINUTES 01 SECONDS WEST FOR 13.05 FEET; THENCE RUN NORTH 81 DEGREES 18 MINUTES 41 SECONDS WEST FOR 62.65 FEET; THENCE RUN NORTH 77 DEGREES 36 MINUTES 56 SECONDS WEST FOR 74.69 FEET; THENCE RUN NORTH 74 DEGREES 31 MINUTES 11 SECONDS WEST FOR 110.11 FEET; THENCE RUN NORTH 79 DEGREES 11 MINUTES 43 SECONDS WEST FOR 104.81 FEET; THENCE RUN SOUTH 89 DEGREES 19 MINUTES 42 SECONDS WEST FOR 44.92 FEET; THENCE RUN SOUTH 75 DEGREES 08 MINUTES 16 SECONDS WEST FOR 49.29 FEET; THENCE RUN SOUTH 63 DEGREES 43 MINUTES 06 SECONDS WEST FOR 61.37 FEET; THENCE RUN SOUTH 42 DEGREES 34 MINUTES 41 SECONDS WEST FOR 43.94 FEET; THENCE RUN SOUTH 31 DEGREES 35 MINUTES 17 SECONDS WEST FOR 31.34 FEET; THENCE RUN SOUTH 46 DEGREES 28 MINUTES 23 SECONDS WEST FOR 19.38 FEET; THENCE RUN SOUTH 63 DEGREES 39 MINUTES 35 SECONDS WEST FOR 37.04 FEET; THENCE RUN SOUTH 71 DEGREES 39 MINUTES 43 SECONDS WEST FOR 18.90 FEET; THENCE RUN NORTH 89 DEGREES 05 MINUTES 35 SECONDS WEST FOR 25.07 FEET; THENCE RUN NORTH 78 DEGREES 44 MINUTES 17 SECONDS WEST FOR 30.72 FEET; THENCE RUN NORTH 86 DEGREES 31 MINUTES 34 SECONDS WEST FOR 32.63 FEET; THENCE RUN SOUTH 89 DEGREES 13 MINUTES 50 SECONDS WEST FOR 32.53 FEET; THENCE RUN SOUTH 76 DEGREES 34 MINUTES 45 SECONDS WEST FOR 23.19 FEET; THENCE RUN SOUTH 71 DEGREES 52 MINUTES 27 SECONDS WEST FOR 20.47 FEET; THENCE RUN SOUTH 78 DEGREES 25 MINUTES 49 SECONDS WEST FOR 44.93 FEET; THENCE RUN SOUTH 81 DEGREES 04 MINUTES 02 SECONDS WEST FOR 76.35 FEET; THENCE RUN SOUTH 83 DEGREES 37 MINUTES 47 SECONDS WEST FOR 78.28 FEET; THENCE RUN SOUTH 82 DEGREES 09 MINUTES 38 SECONDS WEST FOR 14.38 FEET; THENCE RUN SOUTH 60 DEGREES 12 MINUTES 54 SECONDS WEST FOR 15.36 FEET; THENCE RUN SOUTH 44 DEGREES 36 MINUTES 05 SECONDS WEST FOR 50.25 FEET; THENCE RUN SOUTH 38 DEGREES 37 MINUTES 01 SECONDS WEST FOR 49.40 FEET; THENCE RUN SOUTH 41 DEGREES 25 MINUTES 50 SECONDS WEST FOR 99.95 FEET; THENCE RUN SOUTH 43 DEGREES 16 MINUTES 23 SECONDS WEST FOR 78.85 FEET; THENCE

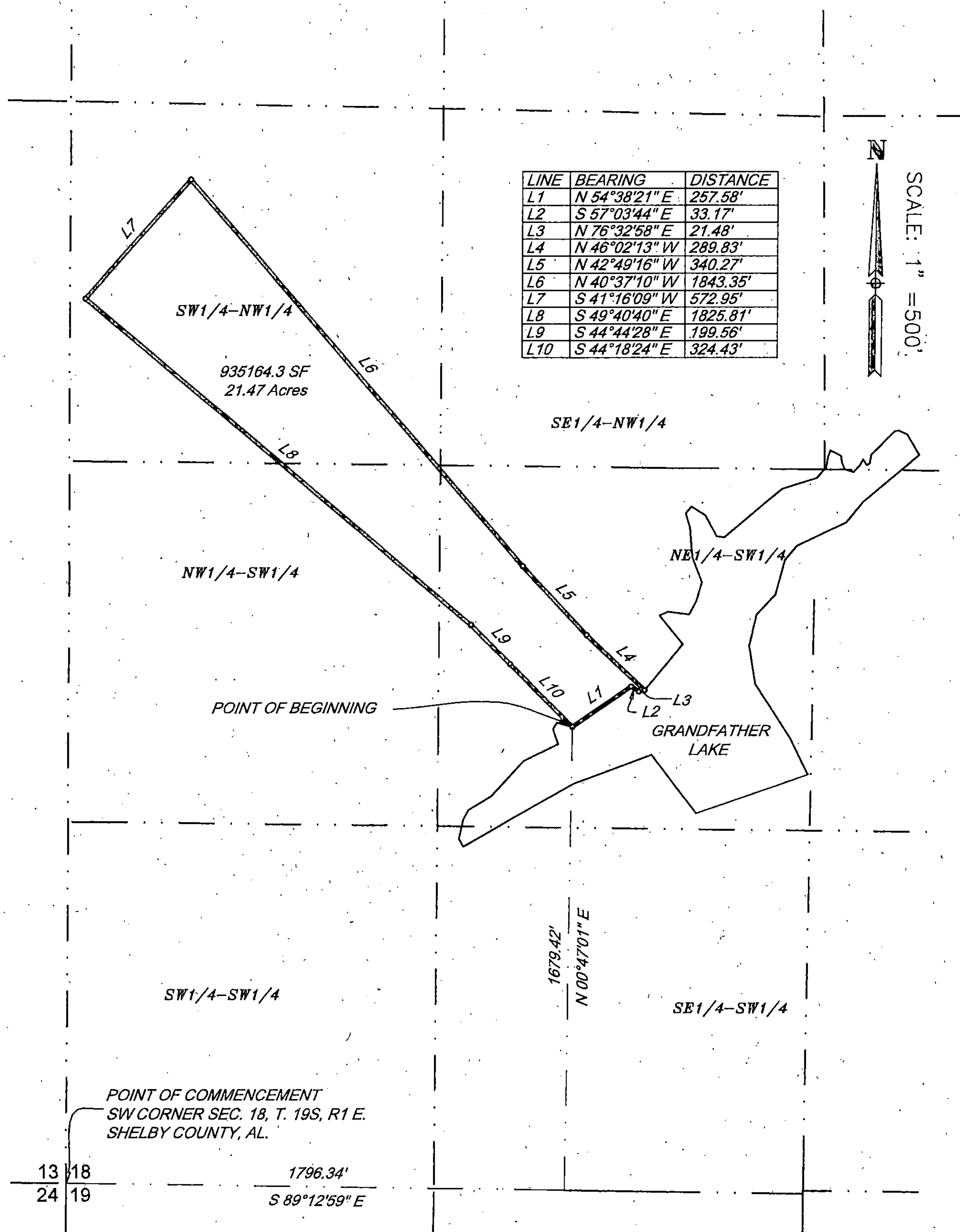


RUN SOUTH 52 DEGREES 23 MINUTES 39 SECONDS WEST FOR 47.98 FEET; THENCE RUN SOUTH 64 DEGREES 49 MINUTES 13 SECONDS WEST FOR 33.76 FEET; THENCE RUN SOUTH 78 DEGREES 24 MINUTES 38 SECONDS WEST FOR 24.05 FEET; THENCE RUN NORTH 86 DEGREES 20 MINUTES 14 SECONDS WEST FOR 21.47 FEET; THENCE RUN NORTH 89 DEGREES 28 MINUTES 49 SECONDS WEST FOR 20.57 FEET; THENCE RUN SOUTH 75 DEGREES 29 MINUTES 21 SECONDS WEST FOR 24.79 FEET; THENCE RUN SOUTH 66 DEGREES 24 MINUTES 00 SECONDS WEST FOR 49.81 FEET; THENCE RUN SOUTH 62 DEGREES 25 MINUTES 43 SECONDS WEST FOR 94.60 FEET TO THE POINT OF BEGINNING.



20180806000279210 5/6 \$32.00
Shelby Cnty Judge of Probate, AL
08/06/2018 02:12:54 PM FILED/CERT

TRACT 7 AT PINE MOUNTAIN PRESERVE



LOT 7

A TRACT OF LAND LYING IN SECTION 18, TOWNSHIP 19 SOUTH, RANGE 1 EAST, SHELBY COUNTY, ALABAMA.

COMMENCE AT THE SOUTHWEST CORNER OF SECTION 18, TOWNSHIP 19 SOUTH, RANGE 1 EAST, THENCE RUN SOUTH 89°12'59" EAST ALONG THE SOUTH LINE OF SAID SECTION FOR 2102.02 FEET; THENCE RUN NORTH 00°47'01" EAST FOR 2090.60 FEET TO A POINT ON THE WATER'S EDGE OF GRANDFATHER LAKE AND THE POINT OF BEGINNING OF THE TRACT OF LAND HEREIN DESCRIBED; THENCE RUN NORTH 54°38'21" EAST A DISTANCE OF 257.58 FEET; THENCE RUN SOUTH 57°03'44" EAST A DISTANCE OF 33.17 FEET; THENCE RUN NORTH 76°32'58" EAST A DISTANCE OF 21.48 FEET; THENCE RUN NORTH 46°02'13" WEST A DISTANCE OF 289.83 FEET; THENCE RUN NORTH 42°49'16" WEST A DISTANCE OF 340.27 FEET; THENCE RUN NORTH 40°37'10" WEST A DISTANCE OF 1843.35 FEET; THENCE RUN SOUTH 41°16'09" WEST A DISTANCE OF 572.95 FEET; THENCE RUN SOUTH 49°40'40" EAST A DISTANCE OF 1825.81 FEET; THENCE RUN SOUTH 44°44'28" EAST A DISTANCE OF 199.56 FEET; THENCE RUN SOUTH 44°18'24" EAST A DISTANCE OF 324.43 FEET; TO THE POINT OF BEGINNING, LESS AND EXCEPT ANY PART LYING BELOW THE SEASONAL NORMAL POOL WATER LEVEL OF GRANDFATHER LAKE.

SAID TRACT CONTAINING AN AREA OF 935,164.34 SQUARE FEET, 21.47 ACRES.

