



20110114000015810 1/8 \$.00  
Shelby Cnty Judge of Probate, AL  
01/14/2011 04:14:15 PM FILED/CERT

**CERTIFICATE OF JUDGE OF PROBATE OF SHELBY COUNTY, ALABAMA**

I, the undersigned Judge of Probate of Shelby County, Alabama, do hereby certify that a description of the boundaries of School Tax District No. 2 in Shelby County, Alabama, including a map thereof, a true and correct copy of which is attached hereto, have been furnished by the County Superintendent of Education of Shelby County, Alabama and the County Board of Education of Shelby County, Alabama, to the office of the Judge of Probate of Shelby County, pursuant to the provisions of Code of Alabama § 16-13-191 (1975) in connection with the special election to be held therein on February 8, 2011 with respect to the proposed renewals of the ad valorem school taxes referenced on Exhibit A hereto.

This 14<sup>th</sup> day of January, 2011.

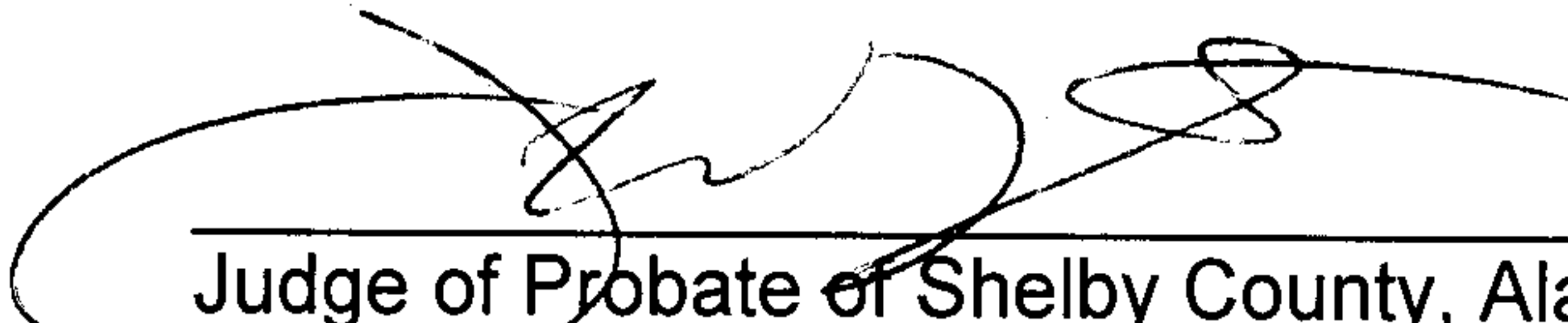
  
\_\_\_\_\_  
Judge of Probate of Shelby County, Alabama

EXHIBIT A

District Ballots



20110114000015810 2/8 \$.00  
Shelby Cnty Judge of Probate, AL  
01/14/2011 04:14:15 PM FILED/CERT



20110114000015810 3/8 \$.00  
Shelby Cnty Judge of Probate, AL  
01/14/2011 04:14:15 PM FILED/CERT

**Renewal of District 2 Three (3) Mill Tax:**

**RENEWAL AND CONTINUATION OF LEVY OF SPECIAL THREE MILL DISTRICT  
SCHOOL TAX FOR TWENTY-FOUR (24) YEARS IN SCHOOL TAX DISTRICT NO. 2 IN  
SHELBY COUNTY, ALABAMA FOR PUBLIC SCHOOL PURPOSES**

Shall a special district ad valorem tax be levied and collected annually for public school purposes in School Tax District No. 2 in Shelby County at the uniform rate of thirty cents on each one hundred dollars worth of taxable property in said School Tax District No. 2 in said County (the boundaries of which School Tax District No. 2 are coterminous with the boundaries and include all of Shelby County, Alabama outside that part of Shelby County located within the corporate limits of the cities of Birmingham, Hoover and Vestavia Hills) for a period of Twenty-Four (24) years beginning with the levy for the tax year October 1, 2017 to September 30, 2018 (the tax for which year will be due and payable October 1, 2018) and ending with the levy for the tax year October 1, 2040 to September 30, 2041 (the tax for which year will be due and payable October 1, 2041), said levy and collection, if authorized, not to increase any present three mill district school tax imposed pursuant to Amendment No. 382 of the Constitution of Alabama of 1901, as amended, in said School Tax District No. 2 but to be in continuation thereof.

\_\_\_\_\_ For proposed taxation

\_\_\_\_\_ Against proposed taxation

**Renewal of District 2 Eleven (11) Mill Tax:**

**RENEWAL AND CONTINUATION OF LEVY OF SPECIAL ELEVEN MILL DISTRICT  
SCHOOL TAX FOR TWENTY-FOUR (24) YEARS IN SCHOOL TAX DISTRICT NO. 2 IN  
SHELBY COUNTY, ALABAMA FOR PUBLIC SCHOOL PURPOSES**

Shall a special district ad valorem tax be levied and collected annually for public school purposes in School Tax District No. 2 in Shelby County at the uniform rate of one dollar and ten cents on each one hundred dollars worth of taxable property in said School Tax District No. 2 in said County (the boundaries of which School Tax District No. 2 are coterminous with the boundaries and include all of Shelby County, Alabama outside that part of Shelby County located within the corporate limits of the cities of Birmingham, Hoover and Vestavia Hills) for a period of Twenty-Four (24) years beginning with the levy for the tax year October 1, 2017 to September 30, 2018 (the tax for which year will be due and payable October 1, 2018) and ending with the levy for the tax year October 1, 2040 to September 30, 2041 (the tax for which year will be due and payable October 1, 2041), said levy and collection, if authorized, not to increase any present eleven mill district school tax imposed pursuant to Amendment No. 3 and Amendment No. 373 of the Constitution of Alabama of 1901, as amended, in said School Tax District No. 2 but to be in continuation thereof.

\_\_\_\_\_ For proposed taxation

\_\_\_\_\_ Against proposed taxation



20110114000015810 4/8 \$.00  
Shelby Cnty Judge of Probate, AL  
01/14/2011 04:14:15 PM FILED/CERT

BOUNDARIES OF SCHOOL TAX DISTRICT NO. 2 IN SHELBY COUNTY, ALABAMA

With respect to a special election to be held in School Tax District No. 2 in Shelby County, Alabama (the boundaries of which School Tax District No. 2 are set forth below), on February 8, 2011, at which there will be submitted to the qualified electors of School Tax District No. 2 in said County for their determination by ballot, the propositions for the renewal of certain district ad valorem school taxes, as set forth on the attached Exhibit A:


The boundaries of said School Tax District No. 2 are as follows:

The boundaries of said School Tax District No. 2 are coterminous with the boundaries and include all of Shelby County, Alabama, outside that part of Shelby County located within the corporate limits of the cities of Birmingham, Hoover, Leeds and Vestavia Hills,

and are shown on the attached map.

EXHIBIT A

District Ballots

  
20110114000015810 5/8 \$.00  
Shelby Cnty Judge of Probate, AL  
01/14/2011 04:14:15 PM FILED/CERT





20110114000015810 6/8 \$.00  
Shelby Cnty Judge of Probate, AL  
01/14/2011 04:14:15 PM FILED/CERT

**Renewal of District 2 Three (3) Mill Tax:**

**RENEWAL AND CONTINUATION OF LEVY OF SPECIAL THREE MILL DISTRICT  
SCHOOL TAX FOR TWENTY-FOUR (24) YEARS IN SCHOOL TAX DISTRICT NO. 2 IN  
SHELBY COUNTY, ALABAMA FOR PUBLIC SCHOOL PURPOSES**

Shall a special district ad valorem tax be levied and collected annually for public school purposes in School Tax District No. 2 in Shelby County at the uniform rate of thirty cents on each one hundred dollars worth of taxable property in said School Tax District No. 2 in said County (the boundaries of which School Tax District No. 2 are coterminous with the boundaries and include all of Shelby County, Alabama outside that part of Shelby County located within the corporate limits of the cities of Birmingham, Hoover and Vestavia Hills) for a period of Twenty-Four (24) years beginning with the levy for the tax year October 1, 2017 to September 30, 2018 (the tax for which year will be due and payable October 1, 2018) and ending with the levy for the tax year October 1, 2040 to September 30, 2041 (the tax for which year will be due and payable October 1, 2041), said levy and collection, if authorized, not to increase any present three mill district school tax imposed pursuant to Amendment No. 382 of the Constitution of Alabama of 1901, as amended, in said School Tax District No. 2 but to be in continuation thereof.

\_\_\_\_\_ For proposed taxation

\_\_\_\_\_ Against proposed taxation

**Renewal of District 2 Eleven (11) Mill Tax:**

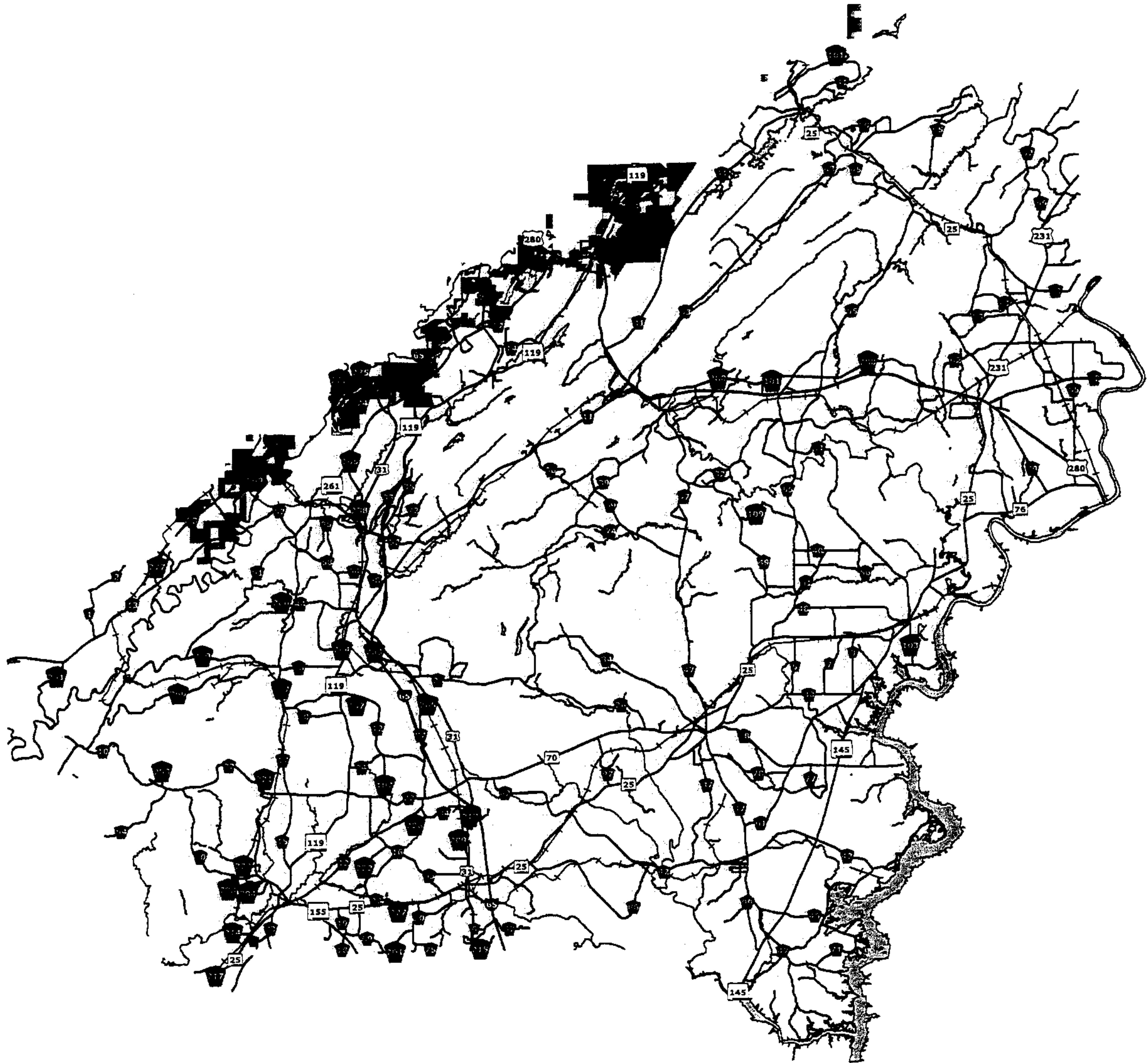
**RENEWAL AND CONTINUATION OF LEVY OF SPECIAL ELEVEN MILL DISTRICT  
SCHOOL TAX FOR TWENTY-FOUR (24) YEARS IN SCHOOL TAX DISTRICT NO. 2 IN  
SHELBY COUNTY, ALABAMA FOR PUBLIC SCHOOL PURPOSES**

Shall a special district ad valorem tax be levied and collected annually for public school purposes in School Tax District No. 2 in Shelby County at the uniform rate of one dollar and ten cents on each one hundred dollars worth of taxable property in said School Tax District No. 2 in said County (the boundaries of which School Tax District No. 2 are coterminous with the boundaries and include all of Shelby County, Alabama outside that part of Shelby County located within the corporate limits of the cities of Birmingham, Hoover and Vestavia Hills) for a period of Twenty-Four (24) years beginning with the levy for the tax year October 1, 2017 to September 30, 2018 (the tax for which year will be due and payable October 1, 2018) and ending with the levy for the tax year October 1, 2040 to September 30, 2041 (the tax for which year will be due and payable October 1, 2041), said levy and collection, if authorized, not to increase any present eleven mill district school tax imposed pursuant to Amendment No. 3 and Amendment No. 373 of the Constitution of Alabama of 1901, as amended, in said School Tax District No. 2 but to be in continuation thereof.






\_\_\_\_\_ For proposed taxation

\_\_\_\_\_ Against proposed taxation

# SHELBY COUNTY



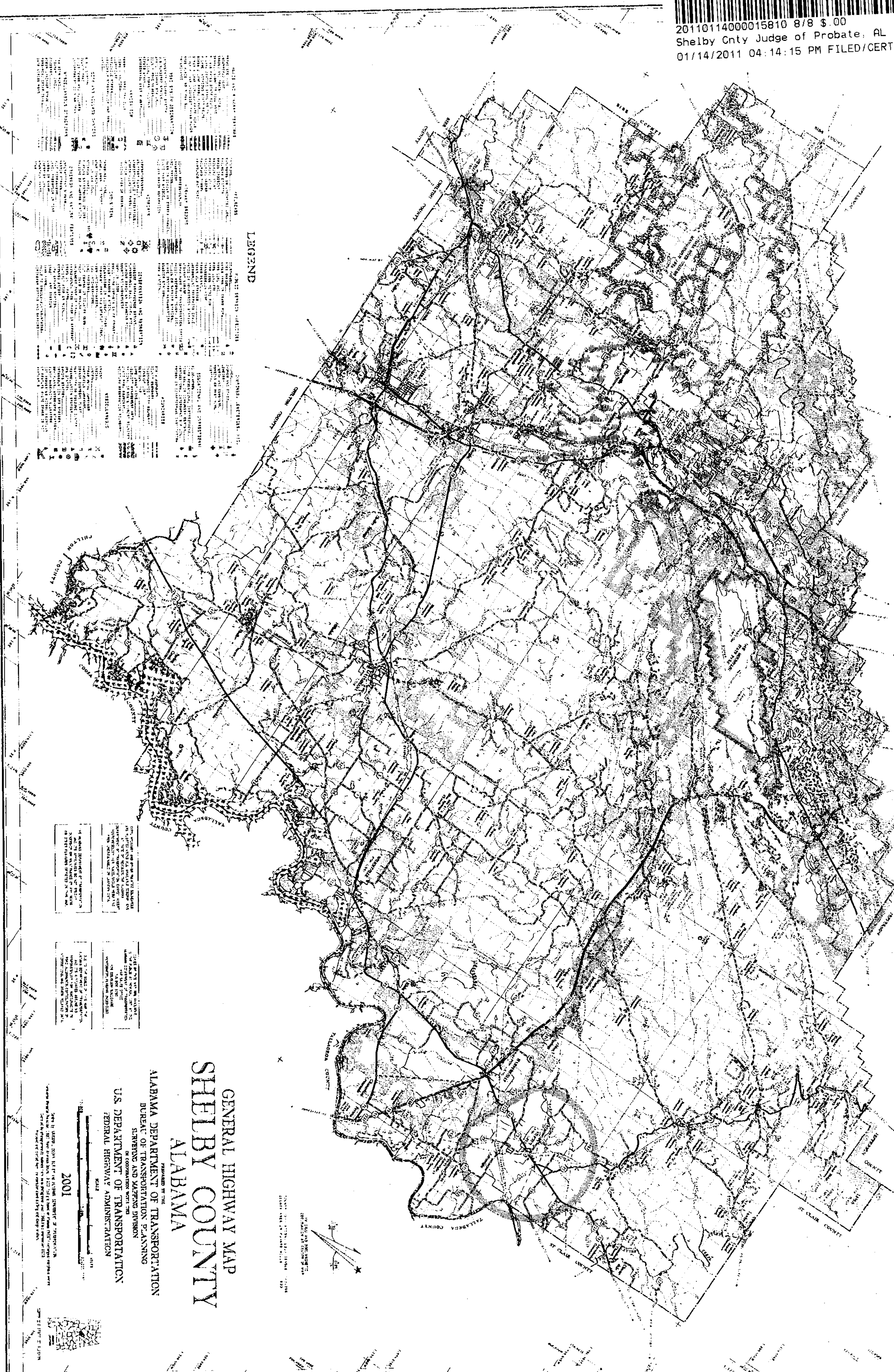
## Legend

-  Birmingham City Schools
-  Hoover City Schools
-  Leeds City Schools
-  Vestavia Hills City Schools
-  Shelby County Schools





20110114000015810 8/8 \$ .00  
Shelby Cnty Judge of Probate, AL  
01/14/2011 04:14:15 PM FILED/CERT



LEGEND

SYMBOL	DESCRIPTION
[Symbol]	Interstate Highway
[Symbol]	U.S. Highway
[Symbol]	State Route
[Symbol]	County Road
[Symbol]	Waterway
[Symbol]	Settlement
[Symbol]	Religious Building
[Symbol]	Public Building
[Symbol]	Industrial Area
[Symbol]	Forest Land
[Symbol]	Unimproved Land
[Symbol]	Topography
[Symbol]	Spot Elevation
[Symbol]	Boundary
[Symbol]	Index

GENERAL HIGHWAY MAP  
SHELBY COUNTY  
ALABAMA

PREPARED BY THE  
ALABAMA DEPARTMENT OF TRANSPORTATION  
BUREAU OF TRANSPORTATION PLANNING  
SURVEYING AND MAPPING DIVISION  
IN COOPERATION WITH THE  
U.S. DEPARTMENT OF TRANSPORTATION  
FEDERAL HIGHWAY ADMINISTRATION

2001