

EASEMENT - DISTRIBUTION FACILITIES (Metes and Bounds)

TO BE RECORDED: YES X NO

This instrument prepared by:

STATE OF ALABAMA }
COUNTY OF Shelby }
TAX ID #

W.E. No. 61700-00-0239-500
Parcel No. 70160972
Transformer No. _____

Alabama Power Company
P. O. Box 2641
Birmingham, Alabama 35291

A. GRANT KNOW ALL MEN BY THESE PRESENTS, That Greensprings Associates Inc.

as grantors (s), (the "Grantor", whether one or more) for and in consideration of One and No/100 (\$1.00) and other good and **valuable** consideration, to Grantor in hand paid by Alabama Power Company, a corporation, the receipt and sufficiency of which are hereby acknowledged, does hereby grant to Alabama Power Company, its successors and assigns (the "Company"), the easements, rights and privileges described and designated in Section B below.

B. RIGHTS The easements, rights and privileges granted hereby are as follows:

1. **Overhead and/or Underground.** The right from time to time to construct, install, operate and maintain, upon, over, under and across the Property described in Section C below, along a route to be selected by the Company which is generally shown on the Company's final location drawing (which shows the general location of underground Facilities, if any, by indicating an area not greater than ten feet (10') in width), all poles, towers, wires, conduits, fiber optics, cables, trans closures, transformers, anchors, guy wires and other Facilities useful or necessary in connection therewith (collectively, "Facilities"), for the overhead and/or underground transmission and distribution of electric power, and also the right to clear and keep clear a strip of land extending five feet (5') to either side of the center line of underground Facilities and fifteen feet (15') to either side of the center line of overhead Facilities; further, the right in the future to install and utilize intermediate poles in line for overhead Facilities and the right to trim and cut and keep trimmed and cut all dead, weak, leaning or dangerous trees or limbs outside of the thirty foot (30') strip for overhead Facilities that, in the sole opinion of the Company, might now or may hereafter endanger, interfere with or fall upon any of the overhead Facilities.
2. **Line Clearing.** The right to trim and cut and keep trimmed and cut all dead, weak, leaning or dangerous trees or limbs that, in the sole opinion of the Company, might now or may hereafter endanger, interfere with or fall upon the electric transmission or distribution lines, poles, towers or other Facilities now or hereafter located adjacent to the Property described in Section C below along a route to be selected by the Company generally shown on the Company's final location drawing, and also the right to clear and keep clear all trees, undergrowth, and other obstructions on property in which Grantor has an interest within fifteen feet (15') of the center line of the lines of such poles, towers or other Facilities.
3. **Guy Wires and Anchors.** The right to implant, install and maintain anchor(s) of concrete, metal or other material on and under the Property described in Section C below, and to construct, extend and maintain guy wires from such anchor(s) to structures now or hereafter erected adjacent to such Property or property adjacent thereto (collectively, "Guy Wire Facilities") along a route to be selected by the Company generally shown on the Company's final location drawing; and also the right to trim and cut and keep trimmed and cut all dead, weak, leaning or dangerous trees or limbs that, in the sole opinion of the Company, might now or may hereafter endanger, interfere with or fall upon any of the Guy Wire Facilities.

Grantor hereby grants to the Company all easements, rights and privileges necessary or convenient for the full enjoyment and use thereof, including without limitation the right of ingress and egress to and from the Facilities and Guy Wire Facilities, as applicable, and the right to excavate for installation, replacement, repair and removal thereof; and also the right to cut, remove and otherwise keep clear any and all structures, obstructions or obstacles of whatever character, on, under and above said Facilities and Guy Wire Facilities, as applicable.

C. PROPERTY DESCRIPTION The easements, rights and privileges granted hereby shall apply to, and the word "Property" as used in this instrument shall mean, the following described real property situated in Shelby County, Alabama (the "Property"):

A parcel of land in the NE1/4 of the NW1/4 of Section 23, Township 21 South, Range 3 West as is recorded in Deed Record 1998/37534 in the office of the Judge of Probate of Shelby County, Alabama.

D. ADDITIONAL PROVISIONS. In the event it becomes necessary or desirable for the Company to move any of the Facilities in connection with the construction or improvement of any public road or highway in proximity to the Facilities, Grantor hereby grants to the Company the right to relocate the Facilities and, as to such relocated Facilities, to exercise the rights granted above; provided, however, the Company shall not relocate the Facilities on the Property at a distance greater than ten feet (10') outside the boundary of the right of way of any such public road or highway as established or re-established from time to time. This grant and agreement shall be binding upon and shall inure to the benefit of Grantor, the Company and each of their respective heirs, personal representatives, successors and assigns and the words "Company" and "Grantor" as used in this instrument shall be deemed to include the heirs, personal representatives, successors and assigns of such parties.

TO HAVE AND TO HOLD the same to the Company, its successors and assigns, forever.

IN WITNESS WHEREOF, the undersigned Grantor(s) has/have set his/her/their hand(s) and seal(s) this the 14th day of July, 2005.

Shelby County, AL 11/01/2005
State of Alabama

Deed Tax: \$.50

Witness

Witness

(Grantor) (SEAL)

Greensprings Associates Inc. (SEAL)
(Grantor)

By: E. J. Williams (SEAL)

As: Vice-President



20051101000566620 1/4 \$20.50
Shelby Cnty Judge of Probate,AL
11/01/2005 11:58:57AM FILED/CERT

IN WITNESS WHEREOF, the said Grantor, has caused this instrument to be executed by _____ its authorized representative, as of the _____ day of _____, 20_____.

ATTEST (if corporation) or WITNESS:

By: _____
Its: _____

(Grantor - Name of Corporation/Partnership/LLC)
By: _____ (SEAL)
Its: _____
[indicate President, General Partner, Member, etc.]

INDIVIDUAL NOTARIES


STATE OF ALABAMA }
COUNTY OF _____ }

I, the undersigned, a Notary Public, in and for said County in said State, hereby certify that _____ whose name(s) is/are signed to the foregoing instrument and who is/are known to me, acknowledged before me on this day that being informed of the contents of the instrument, he/she/they executed the same voluntarily, on the day the same bears date.
Given under my hand and official seal this the _____ day of _____, _____.

[SEAL]

Notary Public
My commission expires: _____

STATE OF ALABAMA }
COUNTY OF _____ }


20051101000566620 2/4 \$20.50
Shelby Cnty Judge of Probate, AL
11/01/2005 11:58:57AM FILED/CERT

I, the undersigned, a Notary Public, in and for said County in said State, hereby certify that _____ whose name(s) is/are signed to the foregoing instrument and who is/are known to me, acknowledged before me on this day that being informed of the contents of the instrument, he/she/they executed the same voluntarily, on the day the same bears date.
Given under my hand and official seal this the _____ day of _____, _____.

[SEAL]

Notary Public
My commission expires: _____

TRUSTEE/CORPORATION/PARTNERSHIP/LLC NOTARY

STATE OF ALABAMA }
COUNTY OF Shelby }

I, the undersigned, a Notary Public, in and for said County in said State, hereby certify that E.J. Marino Jr, whose name as Vice-President of Greensprings Associates Inc. a _____ [as _____], is signed to the foregoing instrument, and who is known to me, acknowledged before me on this day that being informed of the contents of the instrument, he/she, as such Vice-President and with full authority, executed the same voluntarily for and as the act of said _____ [acting in such capacity as aforesaid].

Given under my hand and official seal, this the 14th day of July, 2005.

[SEAL]

Larry D. Smith

Notary Public
My commission expires: 2-6-06

For Alabama Power Company Corporate Real Estate Department Use Only

All facilities on Grantor: X

Station to Station: _____

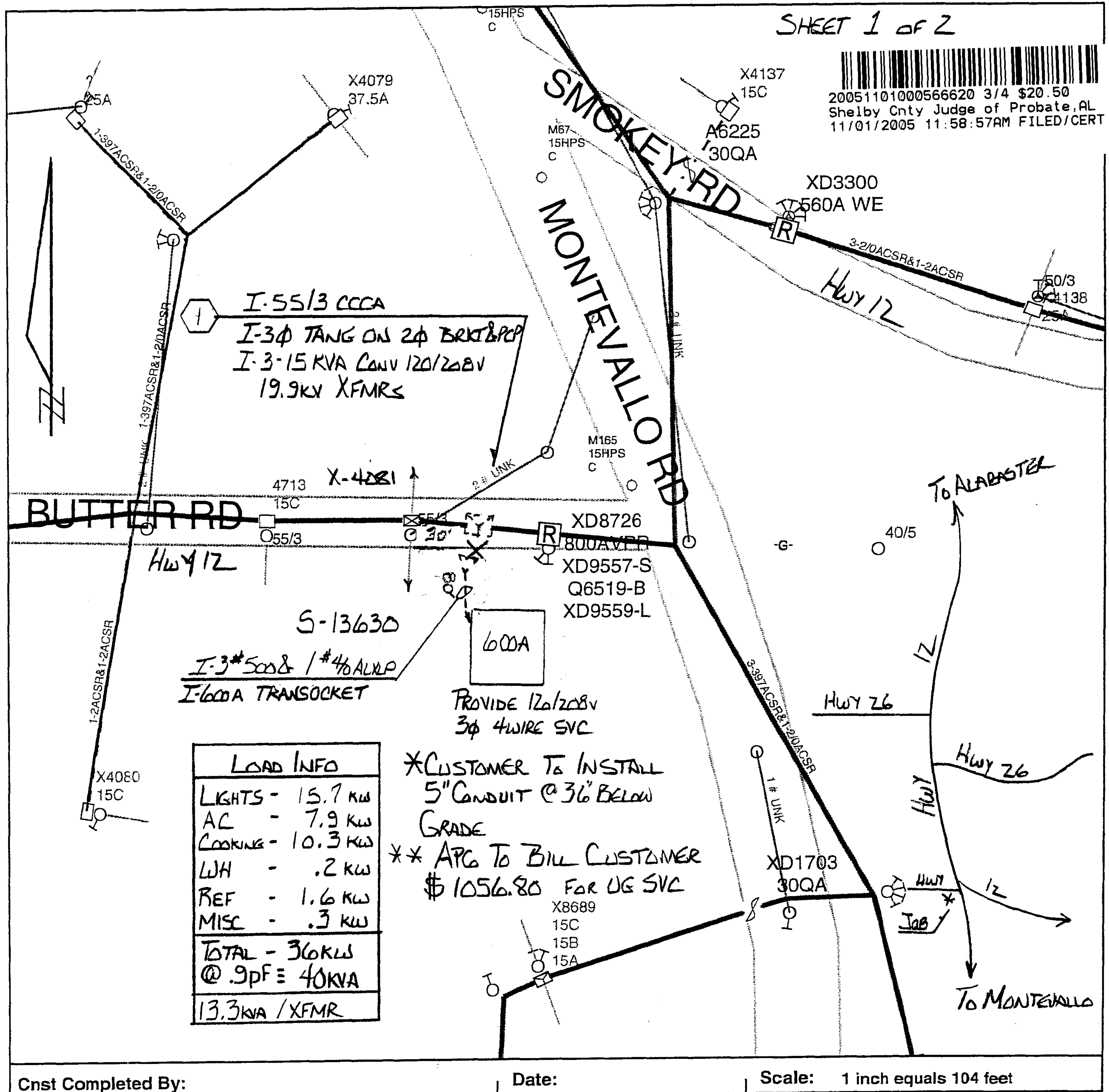
SKETCH OF PROPOSED WORK
SIMPLIFIED W.E.

Map Center UTM
1693258 12052184

Map Center LatLon
-86.827196 33.200364



Customer SHOP A SNAK		Location Hwy 119 & Hwy 12		Agreed Serv. Date 8-1-05		Estimate No. 61700-00-02395	
Region BHAM-SOUTH		Oper. Cntr. PELHAM		Town/City ALABASTER		Created: 6/1/2005	
County Shelby 21S-3W-14-3	Section 14	Township 21S	Range 03W	Add'l Info			
Acquisition Agent L.P.S.		Date R/W Assigned 6-1-05		Date R/W Cleared 8-8-05		Transformer Loading	
Voltage 34.5kv	Phone Co Yes	CATV Co Yes	Accessible Yes	Tree Crew No	Rock Hole No	Permits No	R/W No
City No	County No	State No	Miss All Yes	Other No			



61700-00-02395
SHEET 2 OF 2

20051101000566620 4/4 \$20.50
Shelby Cnty Judge of Probate, AL
11/01/2005 11:58:57AM FILED/CERT

For Energized Line Work:
Obtain HL Work Permit/s @ XD-8726 300 Amp Viper

Substation: Elm Grove D.S.
Feeder # 2 Breaker # 37896

Labels on diagram include: (258), (245), (232), (23), (24), (25), (26), (27), (28), (29), (30), (31), (32), (33), (34), (35), (36), (37), (38), (39), (40), (41), (42), (43), (44), (45), (46), (47), (48), (49), (50), (51), (52), (53), (54), (55), (56), (57), (58), (59), (60), (61), (62), (63), (64), (65), (66), (67), (68), (69), (70), (71), (72), (73), (74), (75), (76), (77), (78), (79), (80), (81), (82), (83), (84), (85), (86), (87), (88), (89), (90), (91), (92), (93), (94), (95), (96), (97), (98), (99), (100), (101), (102), (103), (104), (105), (106), (107), (108), (109), (110), (111), (112), (113), (114), (115), (116), (117), (118), (119), (120), (121), (122), (123), (124), (125), (126), (127), (128), (129), (130), (131), (132), (133), (134), (135), (136), (137), (138), (139), (140), (141), (142), (143), (144), (145), (146), (147), (148), (149), (150), (151), (152), (153), (154), (155), (156), (157), (158), (159), (160), (161), (162), (163), (164), (165), (166), (167), (168), (169), (170), (171), (172), (173), (174), (175), (176), (177), (178), (179), (180), (181), (182), (183), (184), (185), (186), (187), (188), (189), (190), (191), (192), (193), (194), (195), (196), (197), (198), (199), (200), (201), (202), (203), (204), (205), (206), (207), (208), (209), (210), (211), (212), (213), (214), (215), (216), (217), (218), (219), (220), (221), (222), (223), (224), (225), (226), (227), (228), (229), (230), (231), (232), (233), (234), (235), (236), (237), (238), (239), (240), (241), (242), (243), (244), (245), (246), (247), (248), (249), (250), (251), (252), (253), (254), (255), (256), (257), (258), (259), (260), (261), (262), (263), (264), (265), (266), (267), (268), (269), (270), (271), (272), (273), (274), (275), (276), (277), (278), (279), (280), (281), (282), (283), (284), (285), (286), (287), (288), (289), (290), (291), (292), (293), (294), (295), (296), (297), (298), (299), (300), (301), (302), (303), (304), (305), (306), (307), (308), (309), (310), (311), (312), (313), (314), (315), (316), (317), (318), (319), (320), (321), (322), (323), (324), (325), (326), (327), (328), (329), (330), (331), (332), (333), (334), (335), (336), (337), (338), (339), (340), (341), (342), (343), (344), (345), (346), (347), (348), (349), (350), (351), (352), (353), (354), (355), (356), (357), (358), (359), (360), (361), (362), (363), (364), (365), (366), (367), (368), (369), (370), (371), (372), (373), (374), (375), (376), (377), (378), (379), (380), (381), (382), (383), (384), (385), (386), (387), (388), (389), (390), (391), (392), (393), (394), (395), (396), (397), (398), (399), (400), (401), (402), (403), (404), (405), (406), (407), (408), (409), (410), (411), (412), (413), (414), (415), (416), (417), (418), (419), (420), (421), (422), (423), (424), (425), (426), (427), (428), (429), (430), (431), (432), (433), (434), (435), (436), (437), (438), (439), (440), (441), (442), (443), (444), (445), (446), (447), (448), (449), (450), (451), (452), (453), (454), (455), (456), (457), (458), (459), (460), (461), (462), (463), (464), (465), (466), (467), (468), (469), (470), (471), (472), (473), (474), (475), (476), (477), (478), (479), (480), (481), (482), (483), (484), (485), (486), (487), (488), (489), (490), (491), (492), (493), (494), (495), (496), (497), (498), (499), (500), (501), (502), (503), (504), (505), (506), (507), (508), (509), (510), (511), (512), (513), (514), (515), (516), (517), (518), (519), (520), (521), (522), (523), (524), (525), (526), (527), (528), (529), (530), (531), (532), (533), (534), (535), (536), (537), (538), (539), (540), (541), (542), (543), (544), (545), (546), (547), (548), (549), (550), (551), (552), (553), (554), (555), (556), (557), (558), (559), (560), (561), (562), (563), (564), (565), (566), (567), (568), (569), (570), (571), (572), (573), (574), (575), (576), (577), (578), (579), (580), (581), (582), (583), (584), (585), (586), (587), (588), (589), (590), (591), (592), (593), (594), (595), (596), (597), (598), (599), (600), (601), (602), (603), (604), (605), (606), (607), (608), (609), (610), (611), (612), (613), (614), (615), (616), (617), (618), (619), (620), (621), (622), (623), (624), (625), (626), (627), (628), (629), (630), (631), (632), (633), (634), (635), (636), (637), (638), (639), (640), (641), (642), (643), (644), (645), (646), (647), (648), (649), (650), (651), (652), (653), (654), (655), (656), (657), (658), (659), (660), (661), (662), (663), (664), (665), (666), (667), (668), (669), (670), (671), (672), (673), (674), (675), (676), (677), (678), (679), (680), (681), (682), (683), (684), (685), (686), (687), (688), (689), (690), (691), (692), (693), (694), (695), (696), (697), (698), (699), (700), (701), (702), (703), (704), (705), (706), (707), (708), (709), (710), (711), (712), (713), (714), (715), (716), (717), (718), (719), (720), (721), (722), (723), (724), (725), (726), (727), (728), (729), (730), (731), (732), (733), (734), (735), (736), (737), (738), (739), (740), (741), (742), (743), (744), (745), (746), (747), (748), (749), (750), (751), (752), (753), (754), (755), (756), (757), (758), (759), (760), (761), (762), (763), (764), (765), (766), (767), (768), (769), (770), (771), (772), (773), (774), (775), (776), (777), (778), (779), (780), (781), (782), (783), (784), (785), (786), (787), (788), (789), (790), (791), (792), (793), (794), (795), (796), (797

Obtain HL Work Permit/s @ XD-8726 800 Amp
VIPER

Substation: ELMOTSVILLE D.S. _____Feeder # 2 Breaker # 39896