

Access Road - Leeds - Lay Dam 115 kV

This instrument prepared in the
Corporate Real Estate Office
Alabama Power Company
Post Office Box 2641
Birmingham, Alabama 35291
By: Bill Childress

STATE OF ALABAMA }

Shelby County, AL 07/13/2005
State of Alabama

COUNTY OF SHELBY }

Deed Tax: \$2.00

KNOW ALL MEN BY THESE PRESENTS, That Nancy Nelson ,
a divorced woman, sole owner for in
consideration of the sum of Two Thousand and No/100 Dollars (\$2,000.00) to her in
hand paid by Alabama Power Company, a corporation, the receipt of which hereby
acknowledged, does hereby grant to said Alabama Power Company, its successors and
assigns, the non-exclusive right to use from time to time road for roadway purposes for
its vehicles and equipment located or to be constructed by grantor upon, over and along
the following described land situated
in Shelby County, Alabama, to wit:

Such Access Road more particularly described as follows:

For legal description, see Exhibit "A" attached hereto and made a part
hereof.

Together with the right to cross grantor's property with such vehicles and
equipment at other locations in the event said existing road be closed in the future,
provided, however, that grantor may designate such other location to the extent the same
represent route comparable to that set forth in Exhibit "A". In addition, grantee is granted
all the rights and privileges necessary or convenient for the full enjoyment or use of the
rights of way herein granted, including the right to grade, drain, bridge or improve such
right of way. Upon each use of such access road, grantee agrees that it will leave such
road in the same or better condition as such road was in immediately prior to such use by
grantee.

TO HAVE AND TO HOLD the same to the said Company, its successors and
assigns, forever.

th IN WITNESS WHEREOF, I have hereunto set my hand(s) and seal(s), this the
17 day of December 2004.

NOTARY PUBLIC

William R. Childress

Nancy K. Nelson (SEAL)

My Commission Expires: 1-4-06

Access Easement Description
Shelby County, Alabama
Township 18 South, Range 01 East
Section 18

An access easement located in a portion of the West 1/2 of the Northeast 1/4 of Section 18, Township 18 South, Range 01 East of Shelby County, Alabama, more particularly described as follows:

Commence at the Northwest corner of the Southwest 1/4 of the Northeast 1/4 of Section 18, marked by a found 3/4 inch crimped pipe; thence North 68°32'28" East a distance of 261.87 feet to a point at the centerline of Shelby County Road #41, this point will also be known as the Point of Beginning of the hereinafter described access easement; thence North 54°01'03" East a distance of 44.65 along the centerline of said road to a point; thence South 35°58'57" East a distance of 9.96 feet to a point at the south edge of pavement of said road;

thence South 00°10'49" East a distance of 32.84 feet to a point;
thence South 01°04'29" West a distance of 29.87 feet to a point;
thence South 03°58'23" East a distance of 33.40 feet to a point;
thence South 13°56'55" East a distance of 31.52 feet to a point;
thence South 31°08'45" East a distance of 26.00 feet to a point;
thence South 44°34'39" East a distance of 27.90 feet to a point;
thence South 46°08'36" East a distance of 30.19 feet to a point;
thence South 46°58'27" East a distance of 30.11 feet to a point;
thence South 42°40'38" East a distance of 20.29 feet to a point;
thence South 33°45'22" East a distance of 14.20 feet to a point;
thence South 12°08'13" East a distance of 12.78 feet to a point;
thence South 20°07'22" West a distance of 14.41 feet to a point;
thence South 35°11'33" West a distance of 27.70 feet to a point;
thence South 29°34'00" West a distance of 32.74 feet to a point;
thence South 14°08'31" West a distance of 35.94 feet to a point;
thence South 00°30'11" East a distance of 33.14 feet to a point;
thence South 14°16'01" East a distance of 30.78 feet to a point;
thence South 27°45'23" East a distance of 18.82 feet to a point;
thence South 34°22'26" East a distance of 28.49 feet to a point;
thence South 41°18'46" East a distance of 25.72 feet to a point;
thence South 48°28'45" East a distance of 33.60 feet to a point;
thence South 51°40'18" East a distance of 27.32 feet to a point;
thence South 60°01'14" East a distance of 16.70 feet to a point;
thence South 74°10'11" East a distance of 46.82 feet to a point;
thence North 75°56'03" East a distance of 9.27 feet to a point;
thence South 62°55'45" East a distance of 15.19 feet to a point;
thence South 32°05'17" West a distance of 23.82 feet to a point;
thence South 27°17'40" West a distance of 9.06 feet to a point;
thence South 08°17'08" East a distance of 15.15 feet to a point;
thence South 27°10'32" East a distance of 34.31 feet to a point;
thence South 37°28'22" East a distance of 27.10 feet to a point;
thence South 41°59'10" East a distance of 16.52 feet to a point;
thence South 44°00'06" West a distance of 46.82 feet to a point;
thence North 45°16'53" West a distance of 66.35 feet to a point;
thence North 46°27'32" West a distance of 52.39 feet to a point;
thence North 47°53'42" West a distance of 52.06 feet to a point;
thence North 51°28'38" West a distance of 26.44 feet to a point;
thence North 59°41'28" West a distance of 28.01 feet to a point;
thence North 36°34'03" West a distance of 29.24 feet to a point;
thence North 26°43'54" West a distance of 24.28 feet to a point;
thence North 11°58'00" West a distance of 43.47 feet to a point;
thence North 01°32'38" West a distance of 23.16 feet to a point;
thence North 25°41'31" East a distance of 17.90 feet to a point;
thence North 34°44'51" East a distance of 20.91 feet to a point;
thence North 30°56'52" East a distance of 14.14 feet to a point;
thence North 19°12'00" East a distance of 15.99 feet to a set 5/8 inch rebar;
thence North 51°25'29" West a distance of 22.85 feet to a point;
thence North 44°58'02" West a distance of 30.08 feet to a point;
thence North 30°57'48" West a distance of 28.62 feet to a point;
thence North 40°25'50" West a distance of 11.74 feet to a point;
thence North 46°40'35" West a distance of 30.29 feet to a point;
thence North 53°28'01" West a distance of 23.78 feet to a point;
thence North 44°22'37" West a distance of 25.95 feet to a point;
thence North 31°15'58" West a distance of 21.46 feet to a point;
thence North 08°29'05" West a distance of 19.15 feet to a point;
thence North 03°56'31" West a distance of 9.69 feet to a point;
thence North 07°19'55" West a distance of 10.45 feet to a point;
thence North 16°28'57" West a distance of 10.10 feet to a point;
thence North 28°12'46" West a distance of 10.10 feet to a point;
thence North 57°59'05" West a distance of 10.10 feet to a point;

to a point at the south edge of pavement of said road; thence North 35°58'57" West a distance of 10.10 feet to the point of beginning. Said access easement containing 0.392 acres, more or less.

Said access easement is subject to Shelby County Road #41 right-of-way.

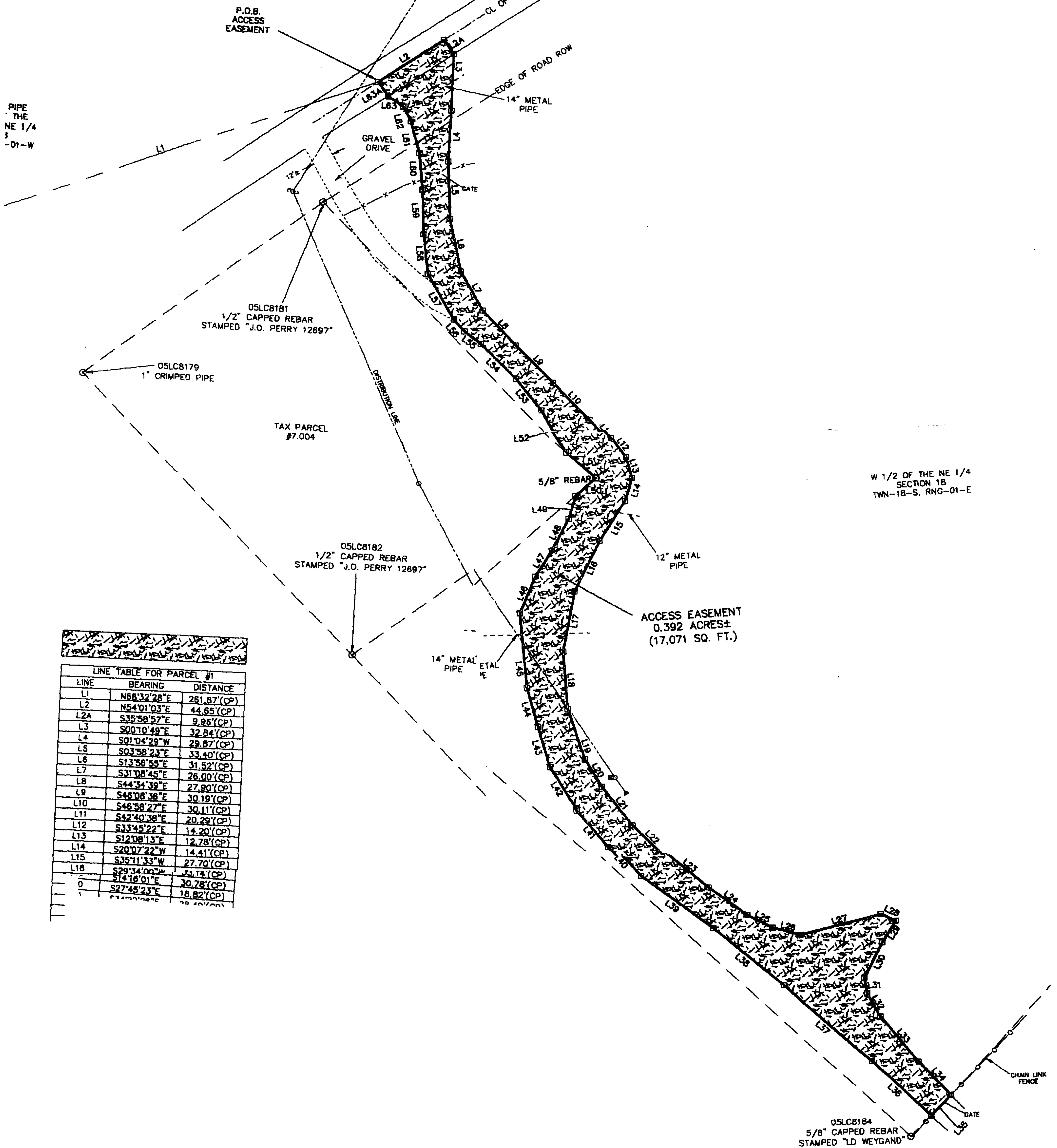


200507130000350170 2/3 \$19.00
Shelby Cnty Judge of Probate, AL
07/13/2005 08:22:39AM FILED/CERT

Exhibit "A"

Exhibit "A"

20050713000350170 3/3 \$19.00
Shelby Cnty Judge of Probate, AL
07/13/2005 08:22:39AM FILED/CERT



LINE TABLE FOR PARCEL #1		
LINE	BEARING	DISTANCE
L1	N68°32'28"E	261.87'(CP)
L2	N54°01'03"E	44.65'(CP)
L2A	S35°58'57"E	9.96'(CP)
L3	S00°10'49"E	32.84'(CP)
L4	S01°04'29"W	29.87'(CP)
L5	S03°58'23"E	33.40'(CP)
L6	S13°56'55"E	31.52'(CP)
L7	S31°08'45"E	26.00'(CP)
L8	S44°34'39"E	27.90'(CP)
L9	S46°08'36"E	30.19'(CP)
L10	S46°58'27"E	30.11'(CP)
L11	S42°40'38"E	20.29'(CP)
L12	S33°45'22"E	14.20'(CP)
L13	S12°08'13"E	12.78'(CP)
L14	S20°07'22"W	14.41'(CP)
L15	S35°11'33"W	27.70'(CP)
L16	S29°34'00"W	35.14'(CP)
0	S14°16'01"E	30.78'(CP)
1	S27°45'23"E	18.82'(CP)

05LC8184
5/8" CAPPED REBAR
STAMPED "LD WEYGAND"