

RESOLUTION 03-12-22-03

BE IT, SEPARATELY AND SEVERALLY, RESOLVED AND ORDAINED BY THE SHELBY COUNTY COMMISSION AS FOLLOWS:

1. Any and all previous action of the Shelby County Commission or its predecessors to the contrary notwithstanding, the designation, existence, boundaries, and description of beats and beat lines within Shelby County for the purposes herein specified, shall henceforth from the effective day hereof be as described and defined herein.

2. That for the purposes of Act No. 82-693 of the Legislature of Alabama, which was approved July 2, 1982, as amended, and for the purpose of determining the area contained within and description of a "beat" as defined in said legislation, Shelby County, Alabama, and all territory contained therein shall be and the same is hereby divided into twelve (12) beats each designated by a specific name which is descriptive of the general community or area encompassed within the beat or situated in close proximity thereto, each beat name and beat boundary description being as described and established herein as follows, to-wit:

CAMP BRANCH BEAT

The boundary is: Beginning at a point being the intersection of the city limits of Pelham and South Fork Yellowleaf Creek, thence meander northeasterly along said creek to its intersection with an Alabama Power Company transmission line. Thence move southeasterly along said transmission line to its intersection with County Road 69. Thence head southeasterly along County Road 69 to its intersection with an unnamed road. Thence proceed southwesterly along said road turning into Maywood Road and continuing southwesterly to its intersection with Queen Road. Thence head southerly along said road to its intersection with County Road 34. Thence follow County Road 34 westerly to its intersection with an unnamed road. Thence move southerly along said road to its intersection with County Road 26. Thence proceed easterly along County Road 26 to its intersection with an unnamed creek. Thence meander southeasterly along said creek to its confluence with Big Creek. Thence meander southwesterly along said creek to its confluence with an unnamed creek. Thence meander southwesterly along said creek to its intersection with an unnamed road. Thence proceed southwesterly along said unnamed road to its intersection with another unnamed road. Thence move southerly along said unnamed road to its intersection with another unnamed road. Thence head southwesterly along said unnamed road to its intersection with Camp Branch. Thence meander northerly along said branch to its intersection with an unnamed road. Thence follow said unnamed road westerly to its intersection with another unnamed road. Thence follow said unnamed road westerly to its intersection with another unnamed road. Thence follow said unnamed road southerly to its intersection with another unnamed road. Thence follow said unnamed road westerly to its intersection with United States Highway

31. Thence proceed northwesterly along United States Highway 31 to its intersection with Fulton Lake Road. Thence head northeasterly along said road to its intersection with the ridgeline of Double Mountain. Thence follow said ridgeline northeasterly to its intersection with the city limits of Pelham. Thence move northeasterly along said city limits to the point of beginning.

CHELSEA NORTH-DUNNAVANT VALLEY SOUTH-WESTOVER NORTH BEAT

The boundary is: Beginning at a point which is the intersection with County Road 55 and Hall Thompson Lane, thence travel southeasterly along said lane to its intersection with Colleton Lake Road. Thence proceed easterly along said road to its intersection with Colleton Forest Way. Thence move easterly along said way to its intersection with an unnamed road. Thence follow southeasterly along said unnamed road to its intersection with a gas pipeline. Thence head northeasterly along said pipeline to its intersection with Blue Springs Road. Thence head southeasterly along said road to its intersection with County Road 83. Thence travel southeasterly along County Road 83 to its intersection with a gas pipeline. Thence head southwesterly along said pipeline to its intersection with Deerwood Lake Drive. Thence travel southerly along said drive to its intersection with County Road 280. Thence move southeasterly along County Road 280 to its intersection with United States Highway 280. Thence proceed northwesterly along United States Highway 280 to its intersection with a gas pipeline. Thence travel southwesterly along said pipeline to its intersection with an Alabama Power Company transmission line. Thence move northwesterly along said transmission line to its intersection with United States Highway 280. Thence proceed northwesterly along United States Highway 280 to its intersection with Bowling Drive. Thence move northeasterly along said drive to its intersection with the city limits of Hoover. Thence follow northeasterly said city limits to its intersection with County Road 41 just south of Farmhouse Road. Thence travel northeasterly along County Road 41 to its intersection with the city limits of Hoover just north of Greystone Cove Drive. Thence proceed northeasterly along said city limits to its intersection with the boundary of Jefferson County. Thence follow said boundary northeasterly to its intersection with an Alabama Power Company transmission line. Thence move southeasterly along said transmission line to its intersection with County Road 41. Thence follow County Road 41 northeasterly to its intersection with Wehapa Drive. Thence travel easterly along said drive to its intersection with Wehapa Circle. Thence move northeasterly along said circle to its intersection with Shoal Creek. Thence meander northeasterly along said creek to its intersection with an Alabama Power Company transmission line. Thence move southerly along said transmission line to its intersection with Muddy Prong. Thence meander northeasterly along Muddy Prong to its intersection with an Alabama Power Company transmission line, bypassing one similar transmission line. Thence move southeasterly along said transmission line to its intersection with County Road 55. Thence follow County Road 55 northeasterly

to the point of beginning.

CHELSEA SOUTH BEAT

The boundary is: Beginning at a point which is the intersection of United States Highway 280 and County Road 280, proceed easterly along United States Highway 280 to its intersection with Little Creek. Thence meander southerly along said creek to its confluence with North Fork Yellowleaf Creek. Thence meander southeasterly along said creek to its confluence with South Fork Yellowleaf Creek. Thence meander southwesterly along said creek to its confluence with Weaver Creek. Thence meander southerly along said creek to its intersection with an Alabama Power Company transmission line. Thence move northwesterly along said transmission line to its intersection with County Road 47. Thence head southwesterly along County Road 47 to its intersection with County Road 69. Thence proceed northwesterly along County Road 69 to its intersection with an Alabama Power Company transmission line. Thence move northwesterly along said transmission line to its intersection with South Fork Yellowleaf Creek. Thence meander southwesterly along said creek to its confluence with Beech Branch. Thence meander northwesterly along said branch to its confluence with Brown Branch. Thence meander northerly along said branch to its intersection with a gas pipeline. Thence proceed westerly along said pipeline to the ridgeline of Double Mountain. Thence follow the ridgeline northeasterly to its intersection with County Road 36. Thence move northwesterly along County Road 36 to its intersection with the city limits of Pelham. Thence head westerly along said city limits to its intersection with the city limits of Chelsea. Thence follow said city limits westerly to its intersection with the boundary of Oak Mountain State Park. Thence proceed northeasterly along said boundary to its intersection with the ridgeline of Oak Mountain. Thence move northeasterly along said ridgeline to its intersection with United States Highway 280. Thence travel southeasterly along United States Highway 280 to the point of beginning.

COLUMBIANA BEAT

The boundary is: Beginning at a point which is the intersection of an Alabama Power Company transmission line and Weaver Creek, thence meander southwesterly along said creek to its intersection with an unnamed road. Thence move southeasterly along said unnamed road to its intersection with another unnamed road. Thence head southerly along said unnamed road to its intersection with another unnamed road. Thence travel southeasterly along said unnamed road to its intersection with another unnamed road. Thence follow said unnamed road southeasterly to its intersection with County Road 49. Thence move southerly along County Road 49 to its intersection with State Route 25. Thence move northeasterly along State Route 25 to its intersection with an unnamed creek. Thence meander southerly along said unnamed creek to its confluence with

Beeswax Creek. Thence meander southeasterly along said creek to its intersection with State Route 145. Thence follow State Route 145 southwesterly to its intersection with County Road 28. Thence move along County Road 28 westerly to its intersection with County Road 61. Thence proceed along County Road 61 southwesterly to its intersection with County Road 47. Thence follow County Road 47 northwesterly to its intersection with Beaver Creek Road. Thence move along Beaver Creek Road southwesterly to its intersection with Mud Creek. Thence meander southeasterly along said creek to its intersection with County Road 42. Thence follow County Road 42 westerly to its intersection with Waxahatchee Creek. Thence meander northwesterly along said creek to its intersection with State Route 25. Thence continue southwesterly along State Route 25 to its intersection with Camp Branch. Thence meander along said branch northwesterly to its confluence with an unnamed creek. Thence meander northwesterly along said unnamed creek to its intersection with State Route 70. Thence travel along State Route 70 northeasterly to its intersection with Landfill Road. Thence move northwesterly along said road to its intersection with an unnamed road. Thence move northerly along said unnamed road to its intersection with another unnamed road. Thence travel northwesterly along said unnamed road to its intersection with an unnamed creek. Thence meander northeasterly along said creek to its confluence with Big Creek. Thence meander northeasterly along said creek to its confluence with an unnamed creek. Thence meander northwesterly along said creek to its intersection with County Road 26. Thence proceed westerly along County Road 26 to its intersection with an unnamed road. Thence move northerly along said road to its intersection with County Road 34. Thence follow County Road 34 easterly to its intersection with Queen Road. Thence head northerly along said road to its intersection with Maywood Road. Thence proceed northeasterly along said road turning into an unnamed road and continuing northeasterly to its intersection with County Road 69. Thence head southeasterly along County Road 69 to its intersection with County Road 47. Thence move northeasterly along County Road 47 to its intersection with an Alabama Power Company transmission line. Thence move southeasterly along said transmission line to the point of beginning.

DUNNAVANT VALLEY NORTH BEAT

The boundary is: Beginning at a point where Wehapa Drive intersects County Road 41, thence follow County Road 41 southwesterly to its intersection with an Alabama Power Company transmission line. Thence move northwesterly along said transmission line to its intersection with the boundary of Jefferson County. Thence follow said boundary northeasterly to a point where the boundaries of Shelby, Jefferson, and Saint Clair counties intersect. Thence follow the Saint Clair County boundary southeasterly to its intersection with the ridgeline of Double Oak Mountain. Thence move southwesterly along said ridgeline to its intersection with State Route 25. Thence travel southwesterly along State Route 25 to its intersection with Lakeview Circle. Thence move southwesterly along

said circle taking the northern split to its intersection with the ridgeline of Double Oak Mountain. Thence follow said ridgeline southwesterly to its intersection with an Alabama Power Company transmission line, bypassing two similar transmission lines. Thence move northerly along said transmission line to its intersection with Shoal Creek. Thence meander southwesterly along said creek to its intersection with Wehapa Circle. Thence follow said circle southwesterly to its intersection with Wehapa Drive. Thence head westerly along said drive to the point of beginning.

HARPERSVILLE-VINCENT BEAT

The boundary is: Beginning at a point which is the convergence of the boundaries of Shelby, Saint Clair, and Talladega counties, meander southwesterly along the boundary of Talladega County following primarily the Coosa River to its confluence with Yellowleaf Creek. Thence meander northwesterly along said creek to its confluence with Carter Branch. Thence meander southwesterly along said branch to its intersection with an Alabama Power Company transmission line, bypassing one similar transmission line. Thence move northwesterly along said transmission line to its intersection with a gas pipeline. Thence travel northeasterly along said pipeline to its intersection with United States Highway 280. Thence proceed southeasterly along United States Highway 280 to its intersection with County Road 280. Thence move northwesterly along County Road 280 to its intersection with Deerwood Lake Drive. Thence travel northerly along said drive to its intersection with a gas pipeline. Thence head northeasterly along said pipeline to its intersection with County Road 83. Thence travel northwesterly along County Road 83 to its intersection with Blue Springs Road. Thence head northwesterly along said road to its intersection with a gas pipeline. Thence head northeasterly along said pipeline to its intersection with County Road 467. Thence move northeasterly along County Road 467 to its intersection with an Alabama Power Company transmission line. Thence head northwesterly along said transmission line to its intersection with an unnamed road. Thence move easterly along said unnamed road to its intersection with County Road 483. Thence follow County Road 483 northeasterly to its intersection with an unnamed road. Thence move northerly along said unnamed road to its intersection with Kelley Creek. Thence meander southeasterly along said creek to its confluence with Wolf Creek. Thence meander northerly along Wolf Creek to its intersection with the boundary of Saint Clair County. Thence follow the boundary of Saint Clair County southeasterly to the point of beginning.

MONTEVALLO BEAT

The boundary is: Beginning at a point which is the convergence of the boundaries of Shelby, Chilton, and Bibb Counties, thence move northwesterly along the boundary of Bibb County to its intersection with Pilgrim Rest Road. Thence move northeasterly along said road to its intersection with County Road 10.

Thence follow County Road 10 southeasterly to its intersection with an unnamed road. Thence travel northeasterly along said road to its intersection with another unnamed road. Thence proceed northerly along said road to its intersection with another unnamed road. Thence move northwesterly along said road to its intersection with County Road 22. Thence proceed northeasterly along County Road 22 to its intersection with Setco Mine Road. Thence travel northerly along said road to its intersection with an unnamed road. Thence proceed northeasterly along said road to its intersection with County Road 17. Thence follow County Road 17 southerly to its intersection with County Road 22. Thence follow County Road 22 easterly to its intersection with County Road 16. Thence proceed southerly along County Road 16 to its intersection with County Road 12. Thence follow County Road 12 northeasterly to its intersection with County Road 16. Thence proceed southeasterly along County Road 16 to its intersection with County Road 23. Thence travel southerly along County Road 23 to its intersection with State Route 25. Thence move westerly along State Route 25 to its intersection with County Road 89. Thence follow County Road 89 southeasterly to its intersection with the boundary of Chilton County. Thence travel along said boundary southwesterly to the point of beginning.

NORTH SHELBY-I65 CORRIDOR BEAT

The boundary is: Beginning at a point which is the confluence of Beaver Dam Creek and the Cahaba River, thence meander southwesterly along said river to its intersection with the boundary line of Bibb County. Thence head northerly along said boundary line to a point, which is the convergence of the boundaries of Shelby, Bibb, and Jefferson counties. Thence move northeasterly along the boundary of Jefferson County to its intersection with the city limits of Hoover near the ridgeline of Oak Mountain. Thence proceed southwesterly along said city limits to its intersection with County Road 41 just north of Greystone Cove Drive. Thence travel southwesterly along County Road 41 to its intersection with the city limits of Hoover just south of Farmhouse Road. Thence follow southwesterly said city limits to its intersection with Bowling Drive. Thence move southwesterly along said drive to its intersection with United States Highway 280. Thence proceed along United States Highway 280 southerly to its intersection with the ridgeline of Oak Mountain. Thence move southwesterly along said ridgeline to its intersection with the boundary of Oak Mountain State Park. Thence proceed southwesterly along said boundary to its intersection with the city limits of Chelsea. Thence follow said city limits easterly to its intersection with the city limits of Pelham. Thence head easterly along said city limits to its intersection with County Road 36. Thence move southeasterly along County Road 36 to its intersection with the ridgeline of Double Mountain. Thence follow said ridgeline southwesterly to its intersection with a gas pipeline. Thence move easterly along said pipeline to its intersection with Brown Branch. Thence meander southerly along said branch to its confluence with Beech Branch. Thence meander southeasterly along said branch to its confluence with South Fork

Yellowleaf Creek. Thence meander easterly along said creek to its intersection with the city limits of Pelham. Thence move southwesterly along said city limits to its intersection with the ridgeline of Double Mountain. Thence follow said ridgeline southwesterly to its intersection with Fulton Lake Road. Thence head southwesterly along said road to its intersection with United States Highway 31. Thence proceed southeasterly along United States Highway 31 to a point, which is the intersection of Oak Tree Lane, United States Highway 31, and an unnamed road. Thence follow said unnamed road easterly to its intersection with another unnamed road. Thence follow said unnamed road northerly to its intersection with another unnamed road. Thence follow said unnamed road easterly to its intersection with another unnamed road. Thence follow said unnamed road easterly to its intersection with Camp Branch. Thence meander southerly along said branch to its intersection with an unnamed road. Thence head northeasterly along said unnamed road to its intersection with another unnamed road. Thence move northerly along said unnamed road to its intersection with another unnamed road. Thence head easterly along said unnamed road to its intersection with another unnamed road. Thence move southerly along said unnamed road to its intersection with Landfill Road. Thence head southeasterly along said road to its intersection with State Route 70. Thence move along State Route 70 southwesterly to its intersection with an unnamed creek. Thence meander southeasterly along said unnamed creek to its confluence with Camp Branch. Thence meander along said branch southeasterly to its intersection with State Route 25. Thence go northeasterly along State Route 25 to its intersection with Waxahatchee Creek. Thence meander southeasterly along said creek to its intersection with County Road 42. Thence follow County Road 42 westerly to its intersection with Coker Road. Thence travel southwesterly along said road to its intersection with Long Branch Creek. Thence meander along said creek westerly to its intersection with the Heart of Dixie Railroad. Thence head westerly along said railroad to its intersection with County Road 86. Thence move southeasterly along County Road 86 to its intersection with Hiawatha Road. Thence proceed southwesterly along said road to its intersection with the boundary of Chilton County. Thence move westerly along said boundary to its intersection with County Road 89. Thence follow County Road 89 northwesterly to its intersection with State Route 25. Thence move easterly along State Route 25 to its intersection with County Road 23. Thence travel northerly along County Road 23 to its intersection with County Road 16. Thence proceed northwesterly along County Road 16 to its intersection with County Road 12. Thence follow County Road 12 southwesterly to its intersection with County Road 16. Thence head northerly along County Road 16 to its intersection with County Road 22. Thence proceed westerly along County Road 22 to its intersection with County Road 17. Thence head northerly along County Road 17 to its intersection with Beaver Dam Creek. Thence meander northwesterly along said creek to the point of beginning.

PEA RIDGE BEAT

The boundary is: Beginning at a point which is the intersection of the boundary of Bibb County and the Cahaba River, thence meander northeasterly along said river to its confluence with Beaver Dam Creek. Thence meander southeasterly along said creek to its intersection with County Road 17. Thence move southerly along County Road 17 to its intersection with an unnamed road just south of County Road 12. Thence proceed southwesterly along said road to its intersection with Setco Mine Road. Thence travel southerly along said road to its intersection with County Road 22. Thence proceed southwesterly along County Road 22 to its intersection with an unnamed road. Thence move southeasterly along said road to its intersection with another unnamed road. Thence proceed southerly along said road to its intersection with another unnamed road. Thence move southwesterly along said road to its intersection with County Road 10. Thence move westerly along County Road 10 to its intersection with Pilgrim Rest Road. Thence proceed southwesterly along said road to its intersection with the boundary of Bibb County. Thence head northwesterly along said boundary to the point of beginning.

SHELBY BEAT

The boundary is: Beginning at a point which is the intersection of the boundary of Chilton County and Hiawatha Road, thence proceed northeasterly along said road to its intersection with County Road 86. Thence move northwesterly along County Road 86 to its intersection with the Heart of Dixie Railroad. Thence head easterly along said railroad to its intersection with Long Branch Creek. Thence meander along said creek easterly to its intersection with Coker Road. Thence head northeasterly along said road to its intersection with County Road 42. Thence follow County Road 42 easterly to its intersection with Mud Creek. Thence meander northwesterly along said creek to its intersection with Beaver Creek Road. Thence move along Beaver Creek Road northeasterly to its intersection with County Road 47. Thence follow County Road 47 southeasterly to its intersection with County Road 61. Thence proceed along County Road 61 northeasterly to its intersection with County Road 28. Thence move along County Road 28 easterly to its intersection with State Route 145. Thence follow State Route 145 northeasterly to its intersection with Beeswax Creek. Thence meander easterly along said creek to its intersection with the boundary of Talladega County. Thence following the Coosa River meander southerly along the boundaries of Talladega and Coosa Counties to a point, being the convergence of the boundaries of Shelby, Coosa, and Chilton counties. Thence proceed northwesterly along the boundary of Chilton County to the point of beginning.

STERRETT-VANDIVER BEAT

The boundary is: Beginning at a point where the ridgeline of Double Oak Mountain intersects the boundary of Saint Clair County, thence move along the boundary of Saint Clair County easterly to its intersection with Wolf Creek.

Thence meander southerly along said creek to its confluence with Kelley Creek. Thence meander northwesterly along Kelley Creek to its intersection with an unnamed road. Thence move southerly along said unnamed road to its intersection with County Road 483. Thence follow County Road 483 southwesterly to its intersection with an unnamed road. Thence move westerly along said unnamed road to its intersection with an Alabama Power Company transmission line. Thence head southeasterly along said transmission line to its intersection with County Road 467. Thence move southwesterly along County Road 467 to its intersection with a gas pipeline. Thence follow said pipeline southwesterly to its intersection with an unnamed road. Thence head along said unnamed road northwesterly to its intersection with Colleton Forest Way. Thence follow said way westerly to its intersection with Colleton Lake Road. Thence proceed westerly along said road to its intersection with Hall Thompson Lane. Thence travel northwesterly along said lane to its intersection with County Road 55. Thence follow County Road 55 southwesterly to its intersection with an Alabama Power Company transmission line. Thence move northwesterly along said transmission line to its intersection with Muddy Prong. Thence meander southwesterly along said stream to its intersection with an Alabama Power Company transmission line, bypassing one similar transmission line. Thence move northerly along said transmission line to its intersection with the ridgeline of Double Oak Mountain. Thence follow said ridgeline northeasterly to its intersection with Lakeview Circle. Thence move northeasterly along said circle taking the northern split to its intersection with State Route 25. Thence travel northeasterly along State Route 25 to its intersection with the ridgeline of Double Oak Mountain. Thence follow said ridgeline northeasterly to the point of beginning.

WESTOVER SOUTH-WILSONVILLE BEAT

The boundary is: Beginning at a point which is the intersection of the boundary of Talladega County and Yellowleaf Creek, meander southwesterly along the boundary of Talladega County following the Coosa River to its confluence with Beeswax Creek. Thence meander northwesterly along said creek to its confluence with an unnamed creek. Thence meander northerly along said unnamed creek to its intersection with State Route 25. Thence proceed southwesterly along State Route 25 to its intersection with County Road 49. Thence move northerly along County Road 49 to its intersection with an unnamed road. Thence follow said unnamed road northwesterly to its intersection with another unnamed road. Thence travel northwesterly along said unnamed road to its intersection with another unnamed road. Thence move northerly along said unnamed road to its intersection with another unnamed road. Thence move northwesterly along said unnamed road to its intersection with Weaver Creek. Thence meander northerly along said creek to its confluence with South Fork Yellowleaf Creek. Thence meander northeasterly along said creek to its confluence with North Fork Yellowleaf Creek. Thence meander northwesterly along said creek to its

confluence with Little Creek. Thence meander northerly along said creek to its intersection with United States Highway 280. Thence proceed along United States Highway 280 easterly to its intersection with an Alabama Power Company transmission line just east of County Road 55. Thence move southeasterly along said transmission line to its intersection with Carter Branch. Thence meander northeasterly along said branch to its confluence with Yellowleaf Creek. Thence meander southeasterly along said creek to the point of beginning.

3. A map depicting the geographical boundaries of each of the above described beats is attached hereto as Exhibit "A" and made part and parcel hereof.

4. All future zoning elections called or held pursuant to the provisions of Act No. 82-693, supra, as amended, shall be held as provided by law and shall pertain and apply to that territory of Shelby County located within the confines of the applicable and appropriate beat as identified and described hereinabove and shall be subject to the terms, provisions, and conditions of said Act No. 82-693, as amended, and this Resolution. All other applicable provisions of general or local law now or then pertaining to such elections shall remain and be applicable to such election.

5. It is expressly declared, resolved, and separately and severally ordained hereby that any area of Shelby County which has been heretofore legally zoned as provided by said Act No. 82-693, as amended, supra, shall remain zoned and subject to the zoning authority of Shelby County and the Shelby County Planning Commission, even though such zoned area may no longer be contained within the boundaries of the beat lines as established at the time of the zoning election by which zoning for such previously described beat was approved.

6. The establishment of beats and the division of Shelby County into beats as provided herein shall be applicable to all future elections called pursuant to Act No. 82-693, as amended, supra, and for other lawful purposes mandated by general or local law but shall not be descriptive of or used for the purpose of determining precincts or voting districts for the conducting of any other General, Primary, Special, federal, state, district, or county election, called or held pursuant to the general laws of the State of Alabama and/or pursuant to the provision of any other local legislation adopted by the Alabama Legislature applicable to Shelby County and pertaining thereto.

7. Any prior Resolution or Ordinance of the Shelby County Commission or any predecessor thereto which is contrary to or inconsistent with the terms, provisions, and conditions set out herein, shall be and the same is hereby repealed only to the extent that the same is contrary hereto or inconsistent herewith.

8. Subsequent to the adoption hereof, the Shelby County Commission shall submit this beat division plan for preclearance pursuant to Section 5 of the Voting Rights Act, 42 U.S.A., Section 1973c, in accord with the provisions of law.

9. The provisions hereof are severable. If any portion hereof shall be declared

invalid by any court of competent jurisdiction, such declaration shall not affect the remaining portions.

10. This Resolution / Ordinance and the terms, provisions, and conditions hereof shall become effective on January 1, 2004.

**This signature shall denote that this is a certified copy of
Resolution 03-12-22-03 passed at the Shelby County Commission
meeting December 22, 2003.**


Kim Reynolds, Administrative Assistant II
to the County Manager

ZONING BEATS



Zoning Beat



Camp Branch



Chelsea North-Dunnavant Valley South-Westover North



Chelsea South



Columbiana



Dunnavant Valley North



Harpersville-Vincent



Montevallo



North Shelby-I65 Corridor



Pea Ridge



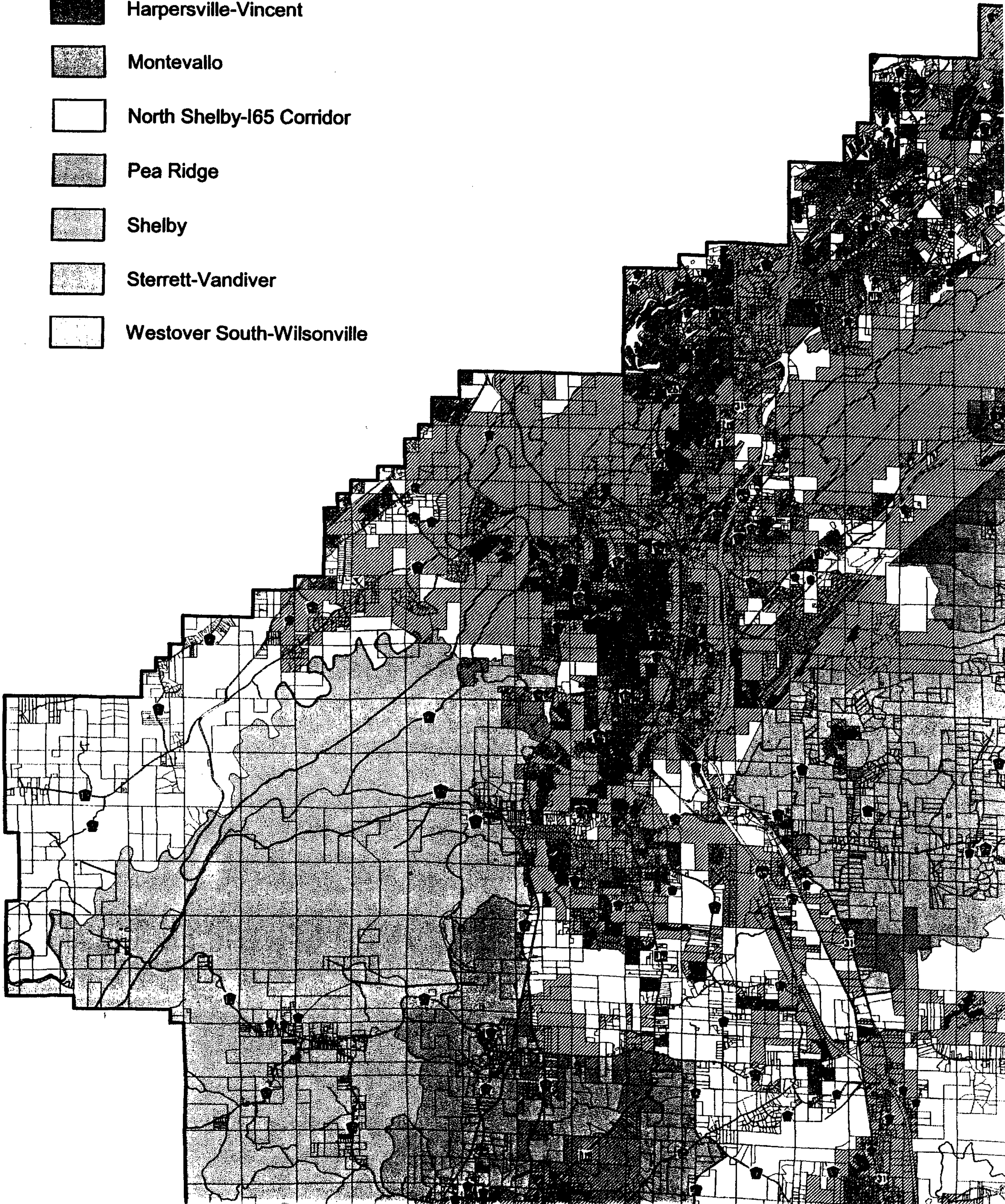
Shelby






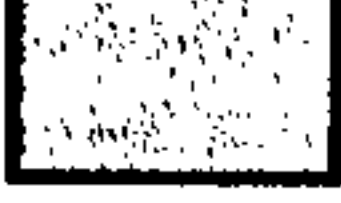
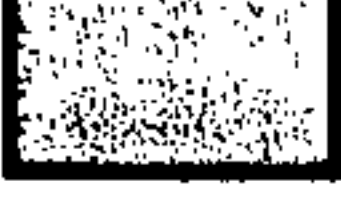



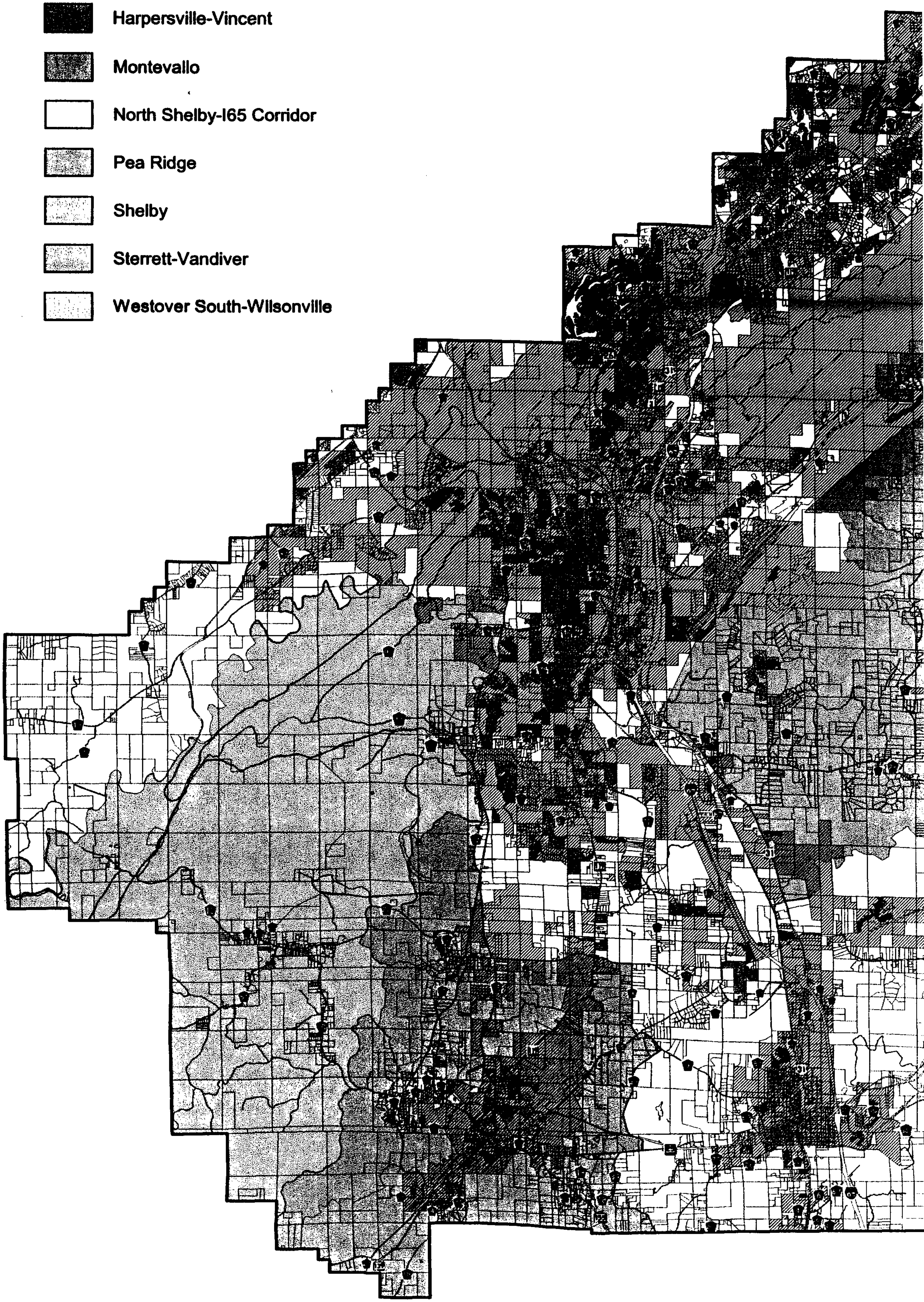
Sterrett-Vandiver



Westover South-Wilsonville

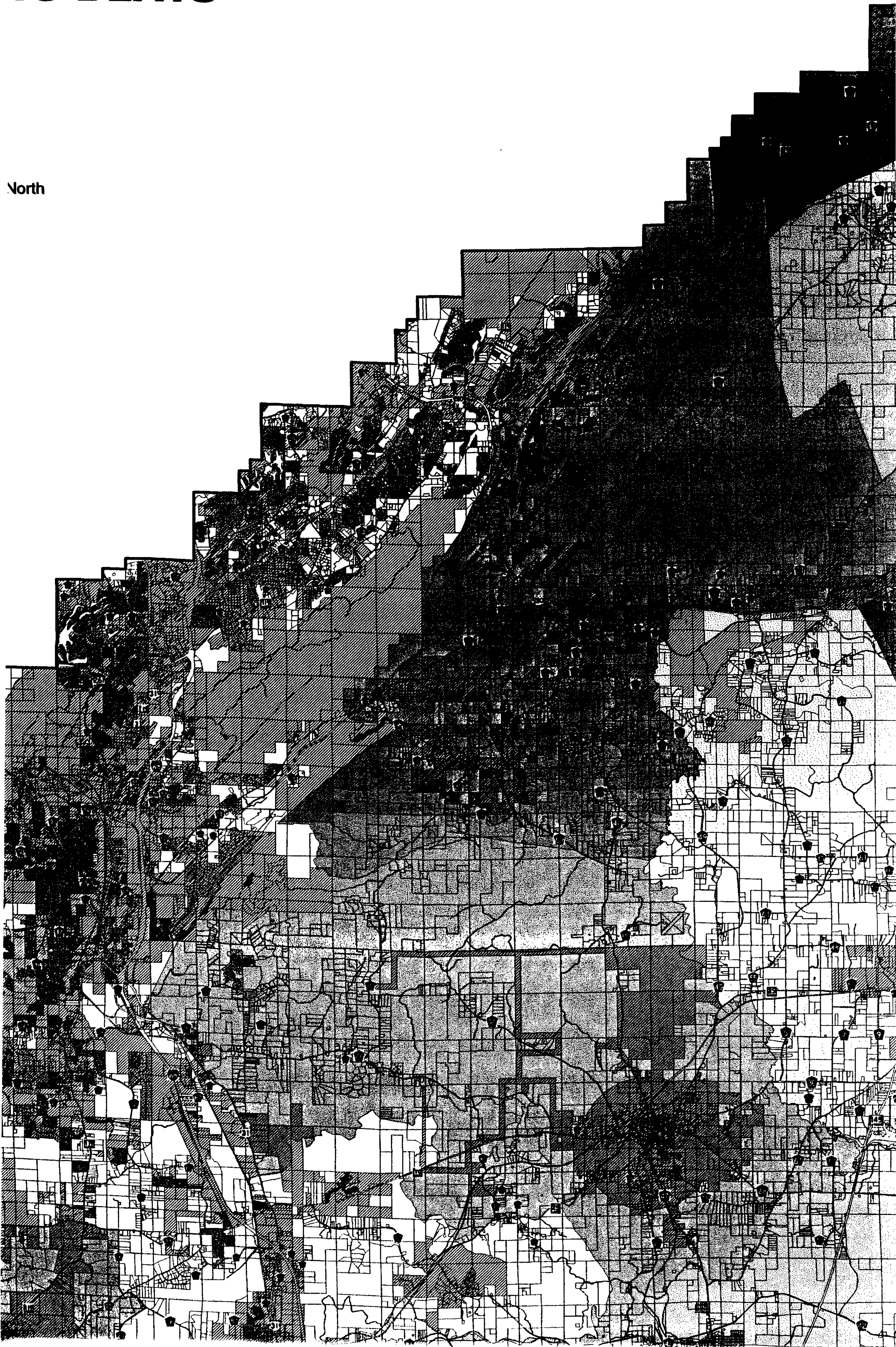


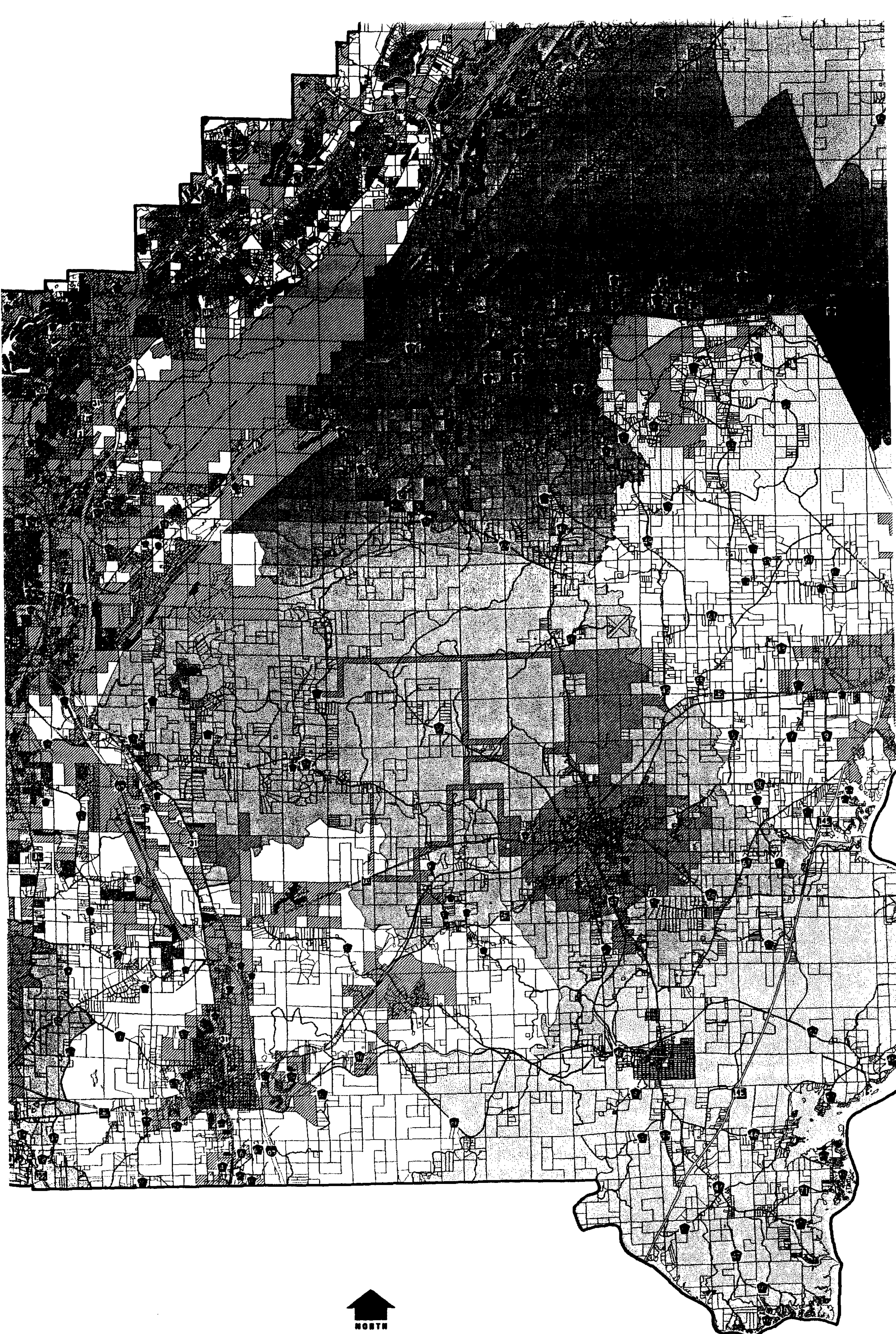
-  Dunnavant Valley North
-  Harpersville-Vincent
-  Montevallo
-  North Shelby-I65 Corridor
-  Pea Ridge
-  Shelby
-  Sterrett-Vandiver
-  Westover South-Wilsonville



ING BEATS

North

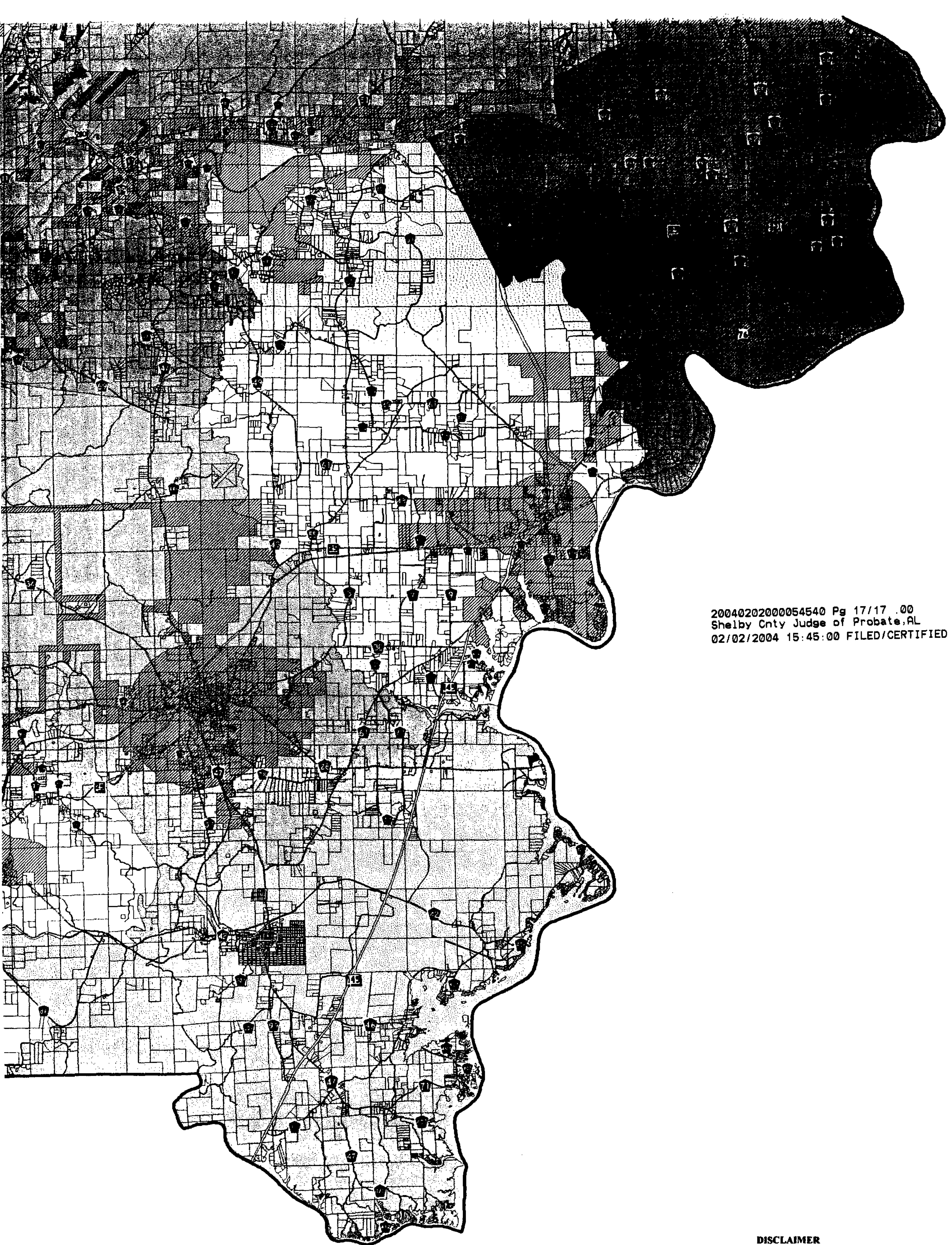




Map is not to Scale

Map Created
January 2, 2004





20040202000054540 Pg 17/17 .00
Shelby Cnty Judge of Probate,AL
02/02/2004 15:45:00 FILED/CERTIFIED

DISCLAIMER

The Shelby County Department of Development Services produced this map using data collected, generated, converted, and/or prepared by various sources. These sources may include, but are not limited to, this Department; other departments of the Shelby County Government; other Shelby County governments; and/or regional, local, State, and Federal governmental agencies. The Shelby County Department of Development Services *assumes no responsibility* for the accuracy of any data acquired from other sources that was used in the production of this map.