

ORDINANCE NUMBER 640-03A

20040202000053690 Pg 1/4 20.00
Shelby Cnty Judge of Probate, AL
02/02/2004 14:20:00 FILED/CERTIFIED

AN ORDINANCE TO ALTER, REARRANGE AND EXTEND THE CORPORATE LIMITS OF THE CITY OF HELENA, ALABAMA, SO AS TO EMBRACE AND INCLUDE WITHIN THE CORPORATE AREA OF SAID CITY ALL TERRITORY NOW WITHIN SUCH CORPORATE LIMITS AND ALSO CERTAIN OTHER TERRITORY CONTIGUOUS TO SAID CITY.

WHEREAS, a petition signed by the owners of all of the land within the territory therein described and proposed to be annexed to the City, together with a map of said territory showing its relationship to the corporate limits of the City, has been filed with the City Clerk of the City of Helena; and

WHEREAS, this Council has determined and found that the matters set forth and alleged in said petition are true, and that it is in the public interest that said property be annexed to the City of Helena;

NOW, THEREFORE, BE IT ORDAINED by the Council of the City of Helena as follows:

Section 1. That said Council and the City of Helena hereby assent to the annexation of said territory to the City of Helena, Alabama, the corporate limits of the City to be extended and rearranged pursuant to the provisions of Chapter 42, Article 2, Code of Alabama 1975 (Sections 11-42-20 through 11-42-23, as amended) so as to embrace and include said territory in addition to the territory already within its present corporate limits, within the corporate area of said City, which said territory is not within the corporate limits of another municipality and the new boundary line does not lie at any point more than half the distance between the old city boundary and the corporate boundary of any municipality. Said territory is described as follows:

A tract of land situation in Section 32 of Township 20 South, Range 3 West of the Huntsville Principal Meridian, Shelby County, Alabama, and being more particularly described as follows:

Section 32, Township 20 South, Range 3 West

The N-1/2 of the N-1/2.

The N-1/2 of the S-1/2 of NE-1/4.

The S 1/2 of the N 1/2 of the N 1/2 of Section 32, Township 20 South, Range 3 West, Shelby County, Alabama on the East side of the 30' strip on the East side of Shelby County Road 91 (Coalmont Road).

THIS ANNEXATION SHALL COMPLY WITH THE STATE OF ALABAMA 1/2 WAY RULE PER SECTION 11-42-21, CODE OF ALABAMA 1975, AS AMENDED.

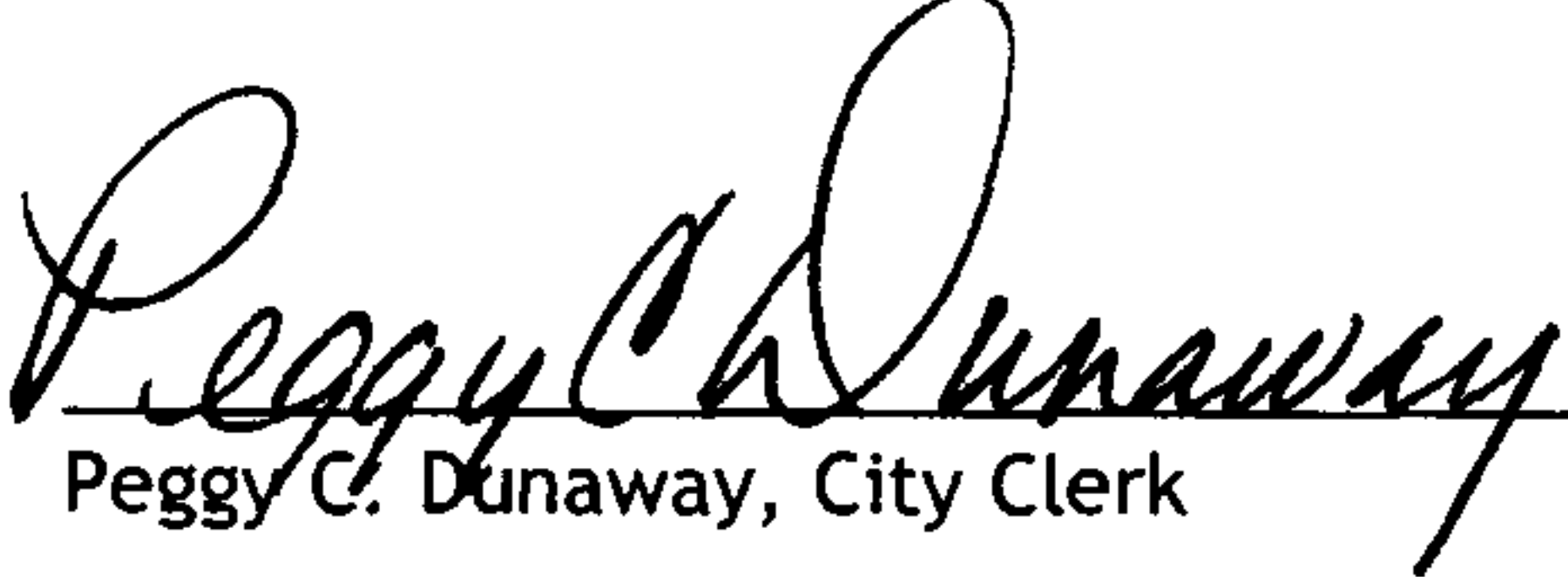
Section 2. That the City Clerk shall file a certified copy of this ordinance containing an accurate description of said annexed territory with the Probate Judge of Shelby County, Alabama, and also cause a copy of this ordinance to be posted in three (3) public places in the City of Helena and this ordinance to be sent to the Justice Department for their approval.

**STATE OF ALABAMA
SHELBY COUNTY**

I, Peggy C. Dunaway, City Clerk of the City of Helena, do hereby certify that the above is a true correct copy of an ordinance duly adopted by the Council of the City of Helena at its meeting held December 15, 2003, and as same appears of record in the ordinance records of said City, and approved by the Mayor on December 15, 2003.

Given under my hand and corporate seal of the City of Helena, this the 15 day of December, 2003.

[SEAL]


Peggy C. Dunaway, City Clerk

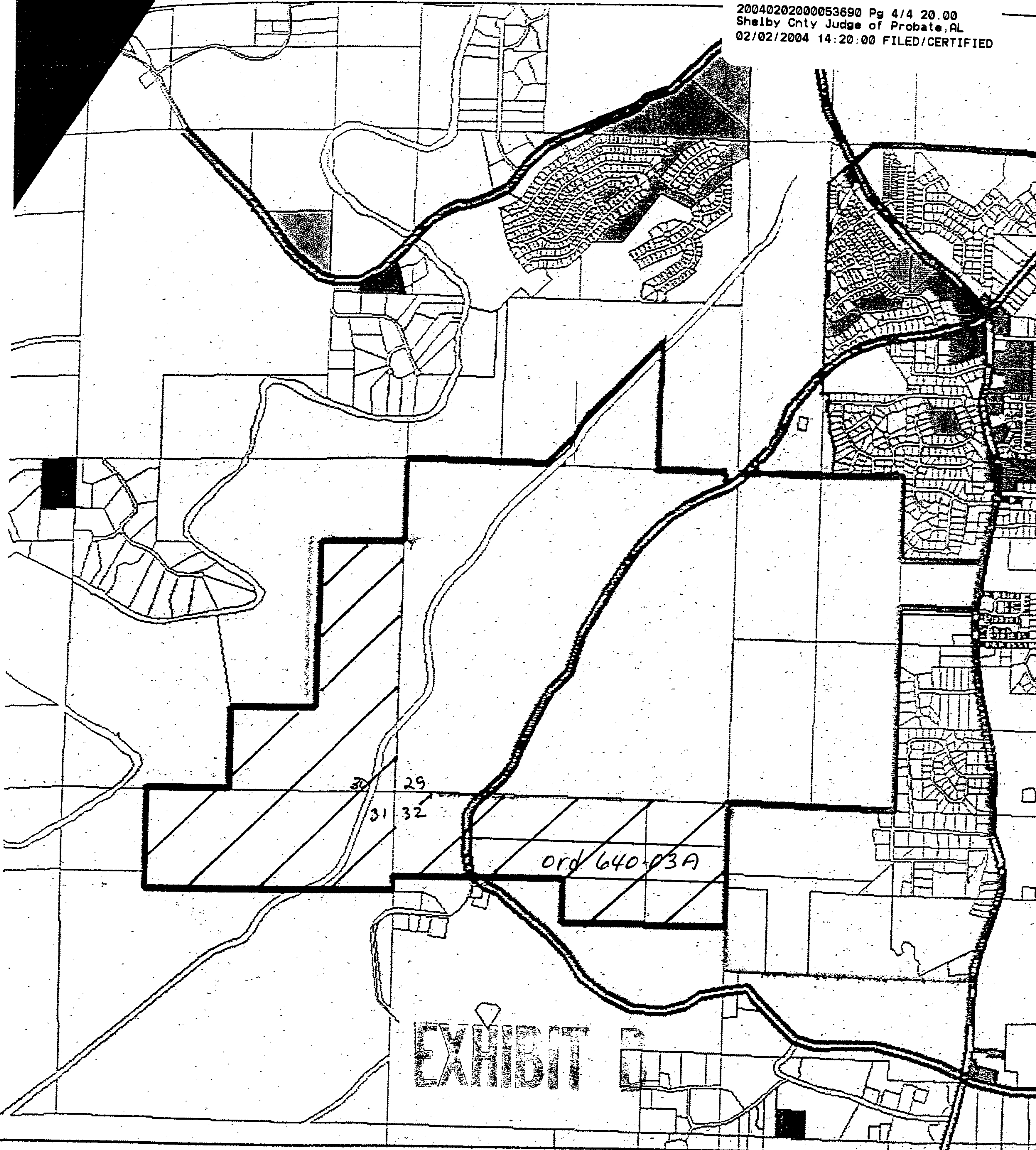
CERTIFICATION

I, Peggy C. Dunaway, the duly appointed and acting Clerk of the City of Helena, Alabama, do hereby certify that the within Ordinance Number **640-03A** is a true copy as recited in the said City Clerk's Minute Book and posted by me as provided by law in three public places in said City, being on the bulletin board of the City Hall, in the BP Coosa Mart in the City of Helena, and in the Helena Public Library in said City, that said Ordinance shall become a duly lawful Ordinance of said City on the 20 day of December, 2003, five or more days after the posting of the same as provided by law.

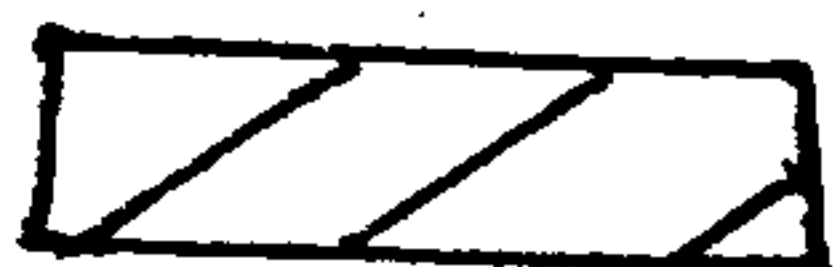
IN WITNESS WHEREOF, I have hereunto set my hand and seal on this the 15 day of December, 2003.

[SEAL]


Peggy C. Dunaway, City Clerk



EXISTING CORPORATE LIMITS
CITY OF HELENA



SUBJECT PROPERTIES