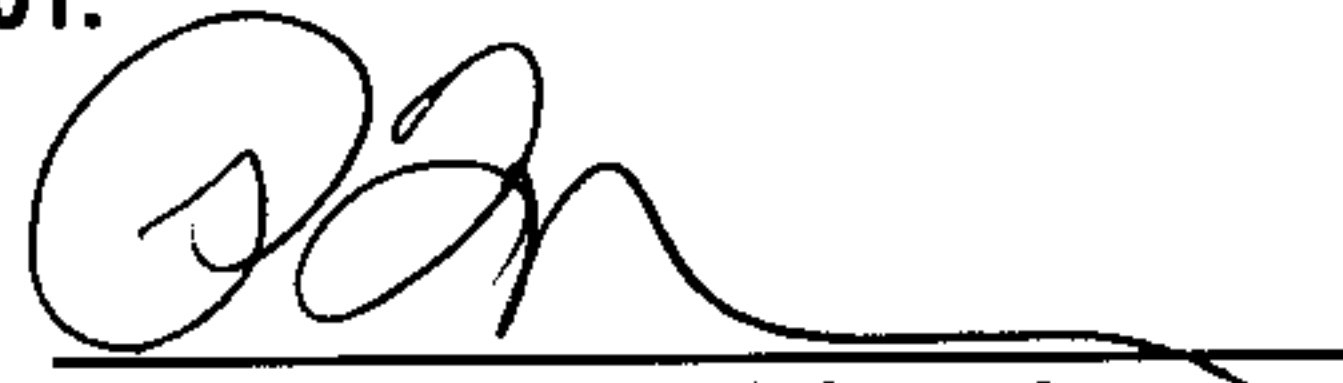


**CERTIFICATE OF JUDGE OF PROBATE
OF SHELBY COUNTY, ALABAMA**

I, the undersigned duly qualified and acting Judge of Probate of Shelby County, Alabama, do hereby certify that a description of the boundaries of School Tax District No. 2 in Shelby County, Alabama, including a map thereof, a true and correct copy of which is attached hereto, have been furnished by the County Superintendent of Education of Shelby County, Alabama and the Board of Education of Shelby County, Alabama, to the office of the Judge of Probate of Shelby County.

This 8th day of November, 2001.


Patricia Yeager Fuhrmeister
Judge of Probate

Inst # 2001-49807

11/16/2001-49807
12:18 PM CERTIFIED
SHELBY COUNTY JUDGE OF PROBATE
014 MEL .00

**BOUNDARIES OF SCHOOL TAX DISTRICT NO. 2 IN SHELBY COUNTY,
ALABAMA**

With respect to a special election to be held in School Tax District No. 2 in Shelby County, Alabama (the boundaries of which School Tax District No. 2 are set forth below), on the 13th day of November, 2001, at which there will be submitted to the qualified electors of School Tax District No. 2 in said County for their determination by ballot, the question of whether a special district ad valorem tax shall be levied and collected annually for public school purposes at the uniform rate of thirty cents on each one hundred dollars worth of taxable property in said School Tax District No. 2 in said County pursuant to the provisions of Amendment No. 382 to the Constitution of Alabama of 1901 for a period of fourteen (14) years beginning with the levy for the tax year October 1, 2003 to September 30, 2004 (the tax for which year will be due and payable October 1, 2004) and ending with the levy for the tax year October 1, 2016 to September 30, 2017 (the tax for which year will be due and payable October 1, 2017), said levy and collection, if authorized, not to increase any present three mill district school tax imposed pursuant to said Amendment No. 382 in said School Tax District No. 2 but to be in continuation thereof:

The boundaries of said School Tax District No. 2 are as follows:

The boundaries of said School Tax District No. 2 are coterminous with the boundaries and include all of Shelby County, Alabama, outside that part of Shelby County located within the corporate limits of the cities of Birmingham, Hoover and Vestavia Hills,

and are shown on the attached map.



**BOUNDARIES OF CONSOLIDATED SCHOOL TAX DISTRICT NO. 2 IN
SHELBY COUNTY, ALABAMA**

With respect to a special election to be held in consolidated School Tax District No. 2 in Shelby County, Alabama (the boundaries of which are set forth below), on the 13th day of November, 2001, at which there will be submitted to the qualified electors of School Tax District No. 1 and School Tax District No. 2 in said County for their determination by ballot, the question of whether School Tax District No. 1 in Shelby County, Alabama (as established at an election held on June 7, 1988 for the levy of a three mill district ad valorem school tax under Amendment No. 3 for a period ending with the tax year October 1, 2002 to September 30, 2003 as described below) shall be consolidated with and into School Tax District No. 2 in Shelby County Alabama (as established at an election held on May 27, 1997 for the levy of an eleven mill district ad valorem school tax under Amendment Nos. 3 and 373 for a period ending with the tax year October 1, 2016 to September 30, 2017 as described below); and effective October 1, 2003 said School Tax District No. 2 thereupon constitute all of Shelby County, Alabama outside the corporate limits of the cities of Birmingham, Hoover and Vestavia Hills; and the special district ad valorem school tax presently levied and collected pursuant to Amendment Nos. 3 and 373 to the Constitution of Alabama of 1901 in School Tax District No. 2 at the rate of \$1.10 on each \$100 worth of taxable property in said School Tax District No. 2 for a period ending with the tax year October 1, 2016 to September 30, 2017, thereupon be levied and collected at said rate for public school purposes in School Tax District No. 2 as so consolidated with and enlarged by said School Tax District No. 1 for a period beginning with the levy for the tax year October 1, 2003 to September 30, 2004 (the tax for which year will be due and payable October 1, 2004) and ending with the levy for the tax year October 1, 2016 to September 30, 2017 (the tax for which year will be due and payable October 1, 2017); said consolidation, if authorized, not to increase any present taxation in said School Tax District No. 2 as in effect on the date of such election and to increase taxation by the rate of eighty cents (\$.80) on each \$100 worth of taxable property in said School Tax District No. 1 as in effect on the date of such election:

The boundaries of School Tax District No. 2 as consolidated with and enlarged by School Tax District No. 1 are as follows:

The boundaries of said School Tax District No. 2 are coterminous with the boundaries and include all of Shelby County, Alabama, outside that part of Shelby County located within the corporate limits of the cities of Birmingham, Hoover and Vestavia Hills,

and are shown on the attached map.

The boundaries of former School Tax District No. 1 are:

Begin at the northwest corner of Section 32, Township 18, Range 2 East; thence south along the west line of said Section 32 and the extension thereof to the southwest corner of Section 20, Township 19, Range 2 East; thence east along the south line of said Section 20, and the extension thereof to the southeast corner of Section 24, Township 19, Range 2 East; thence north along the east boundary line



of said Section 24 and the extension thereof to the northeast corner of Section 36, Township 18, Range 2 East; thence west along the north line of said Section 36 and the extension thereof to the northwest corner of Section 32, Township 18, Range 2 East.

Said area comprises Sections 32, 33, 34, 35 and 36, township 18, Range 2 East, and Sections 1, 2, 3, 4, 5, 8, 9, 10, 11, 12, 13, 14, 15, 16, 17, 20, 21, 22, 23 and 24, Township 19, Range 2 East, in Shelby County.

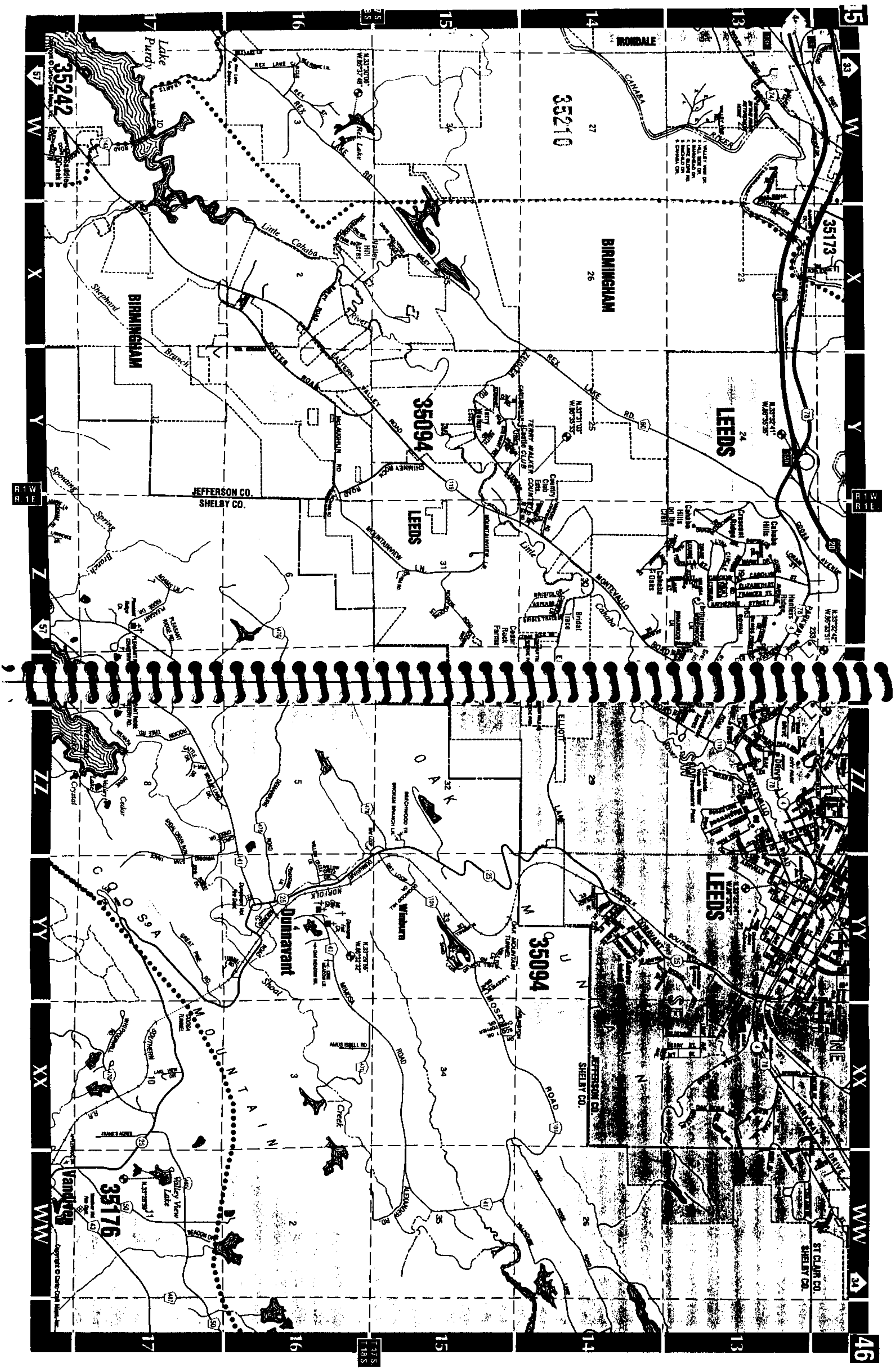
The boundaries of former School Tax District No. 2 are:

The boundaries of said School Tax District No. 2 are coterminous with the boundaries of Shelby County, Alabama, excluding (i) those parts of Shelby County included within the corporate limits of the municipalities of Birmingham, Hoover, Vestavia Hills and (ii) that part of Shelby County located in School Tax District No. 1, described as follows:

Begin at the northwest corner of Section 32, Township 18, Range 2 East; thence south along the west line of said Section 32 and the extension thereof to the southwest corner of Section 20, Township 19, Range 2 East; thence east along the south line of said Section 20, and the extension thereof to the southeast corner of Section 24, Township 19, Range 2 East; thence north along the east boundary line of said Section 24 and the extension thereof to the northeast corner of Section 36, Township 18, Range 2 East; thence west along the north line of said Section 36 and the extension thereof to the northwest corner of Section 32, Township 18, Range 2 East.

Said area comprises Sections 32, 33, 34, 35 and 36, township 18, Range 2 East, and Sections 1, 2, 3, 4, 5, 8, 9, 10, 11, 12, 13, 14, 15, 16, 17, 20, 21, 22, 23 and 24, Township 19, Range 2 East, in Shelby County.







JEFFERSON CO.
SHELBY CO.

35242

BIRMINGHAM

Lake Purdy

MOUNTAIN BROOK

35242

35243

35209

35223

HOOPER

BIRMINGHAM

Southern

HOOPER

Orton

FOOTER

FOOTER

FOOTER

FOOTER

FOOTER

FOOTER

FOOTER

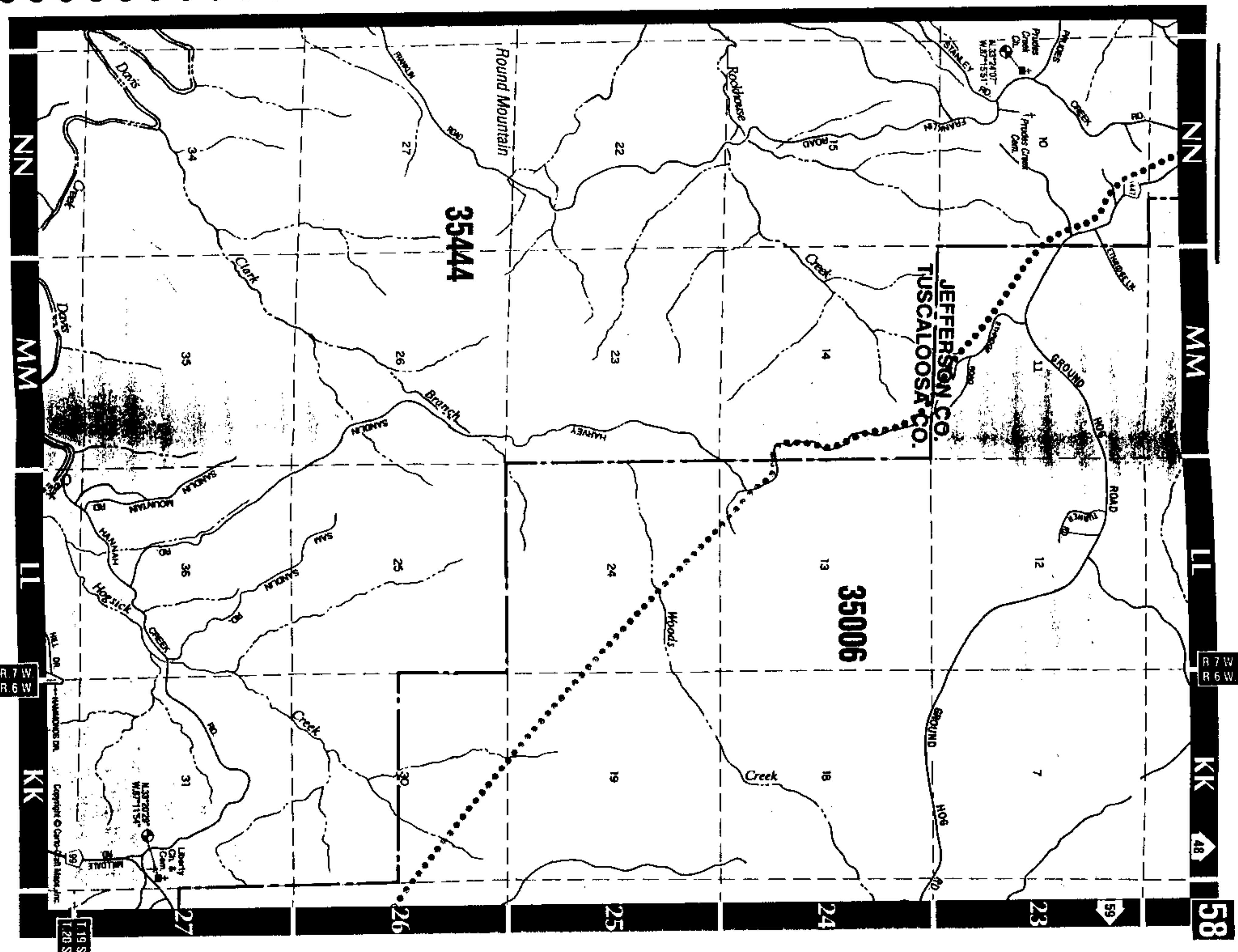
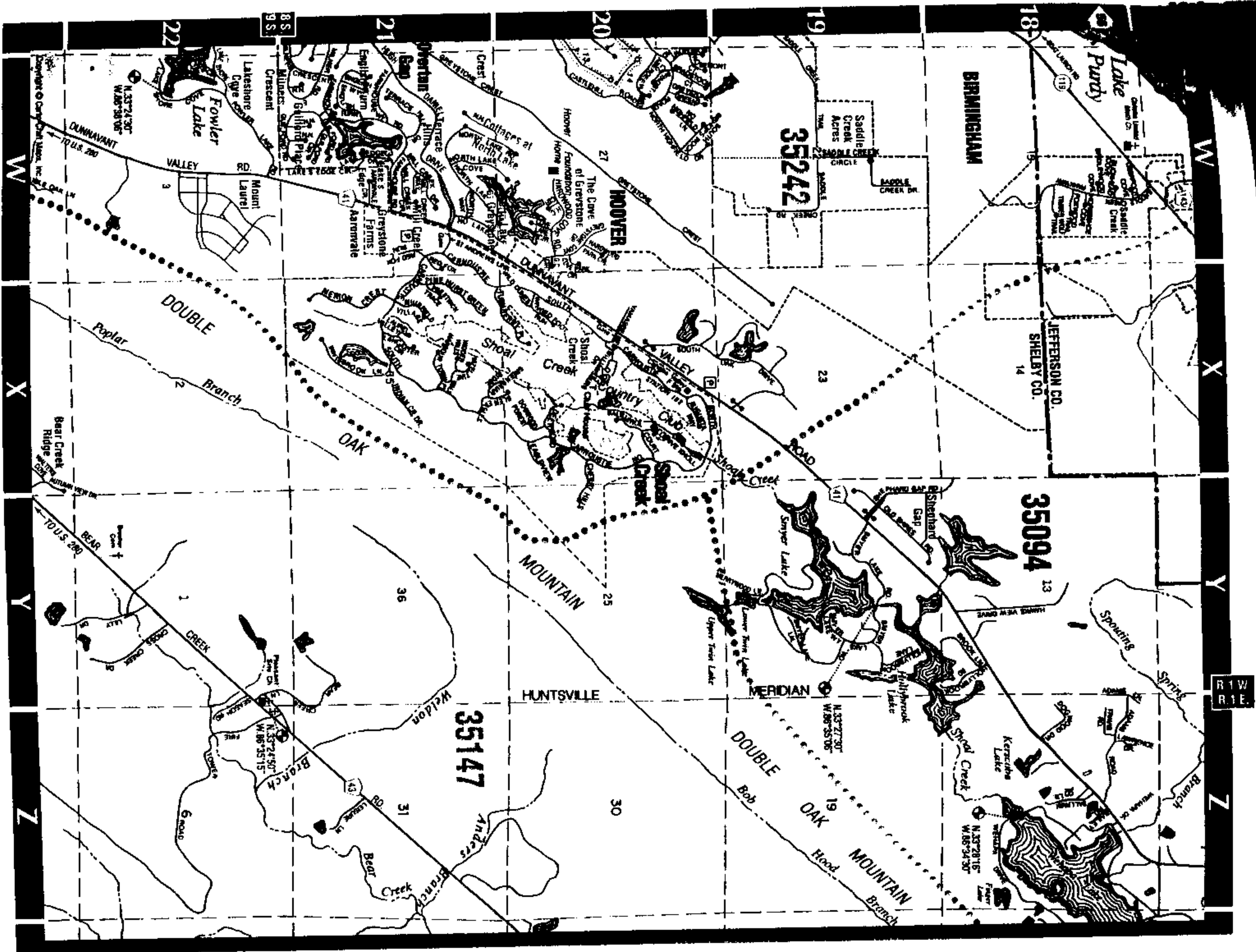
FOOTER

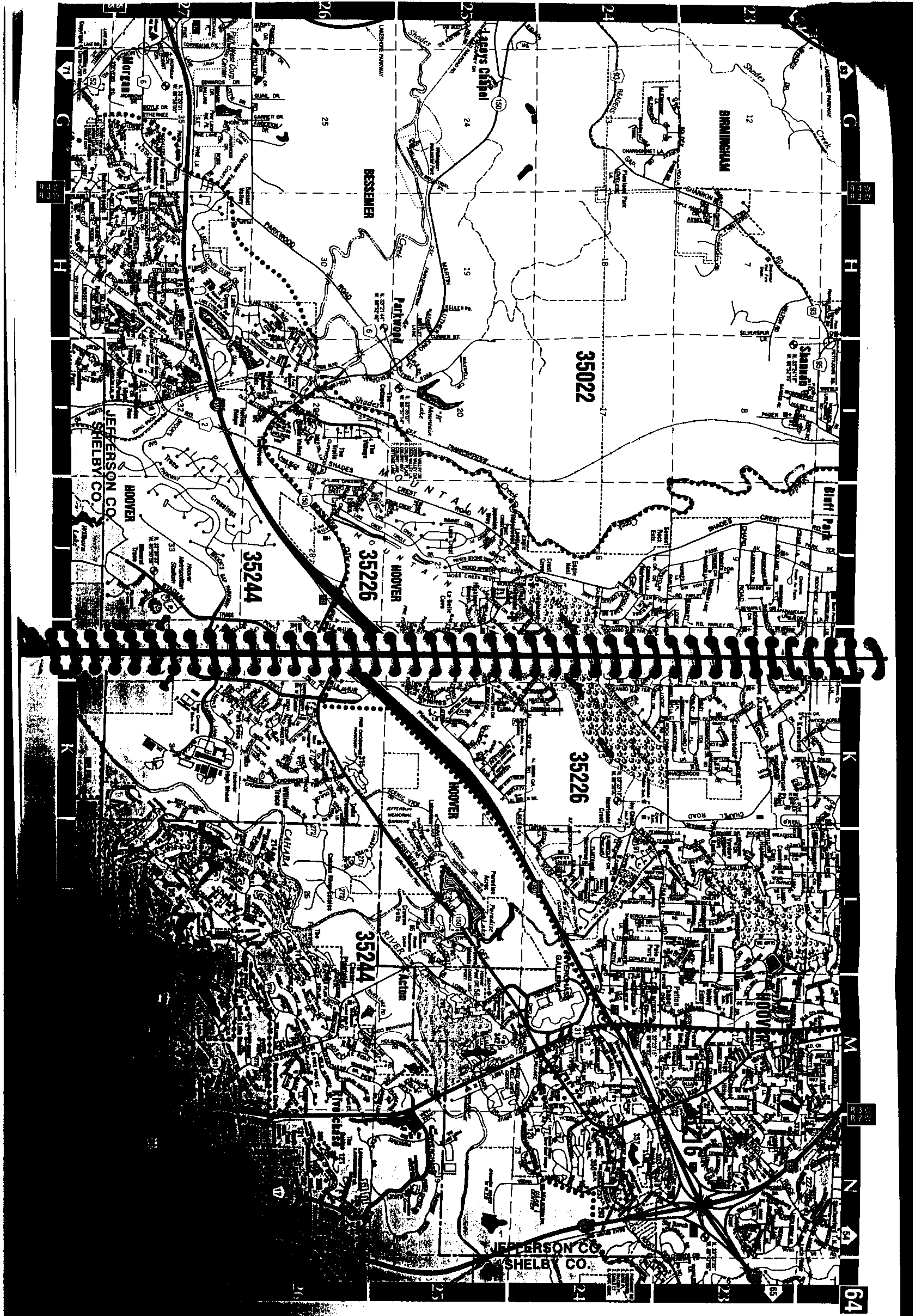
R2W
R1W

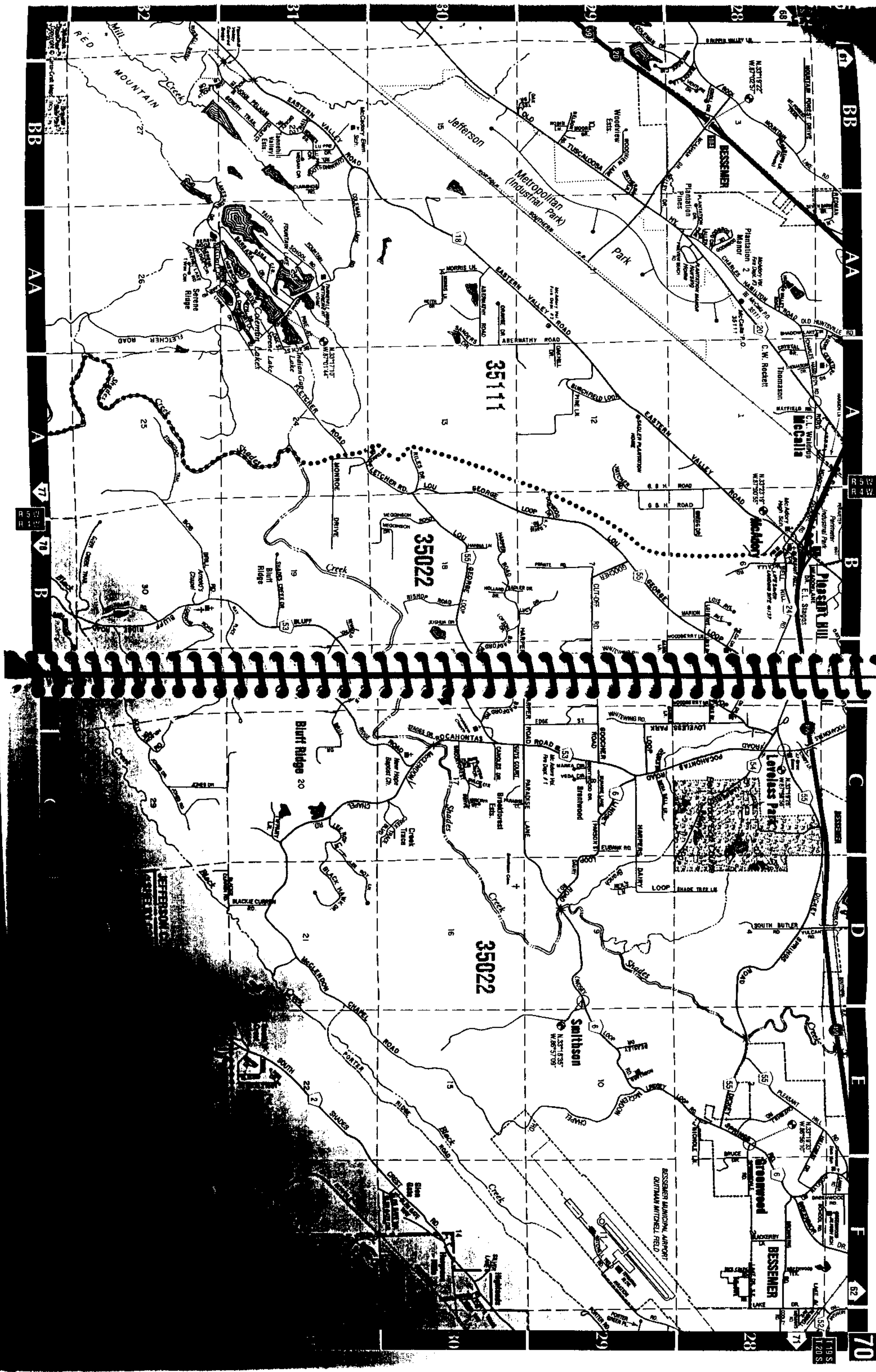
R2W
R1W

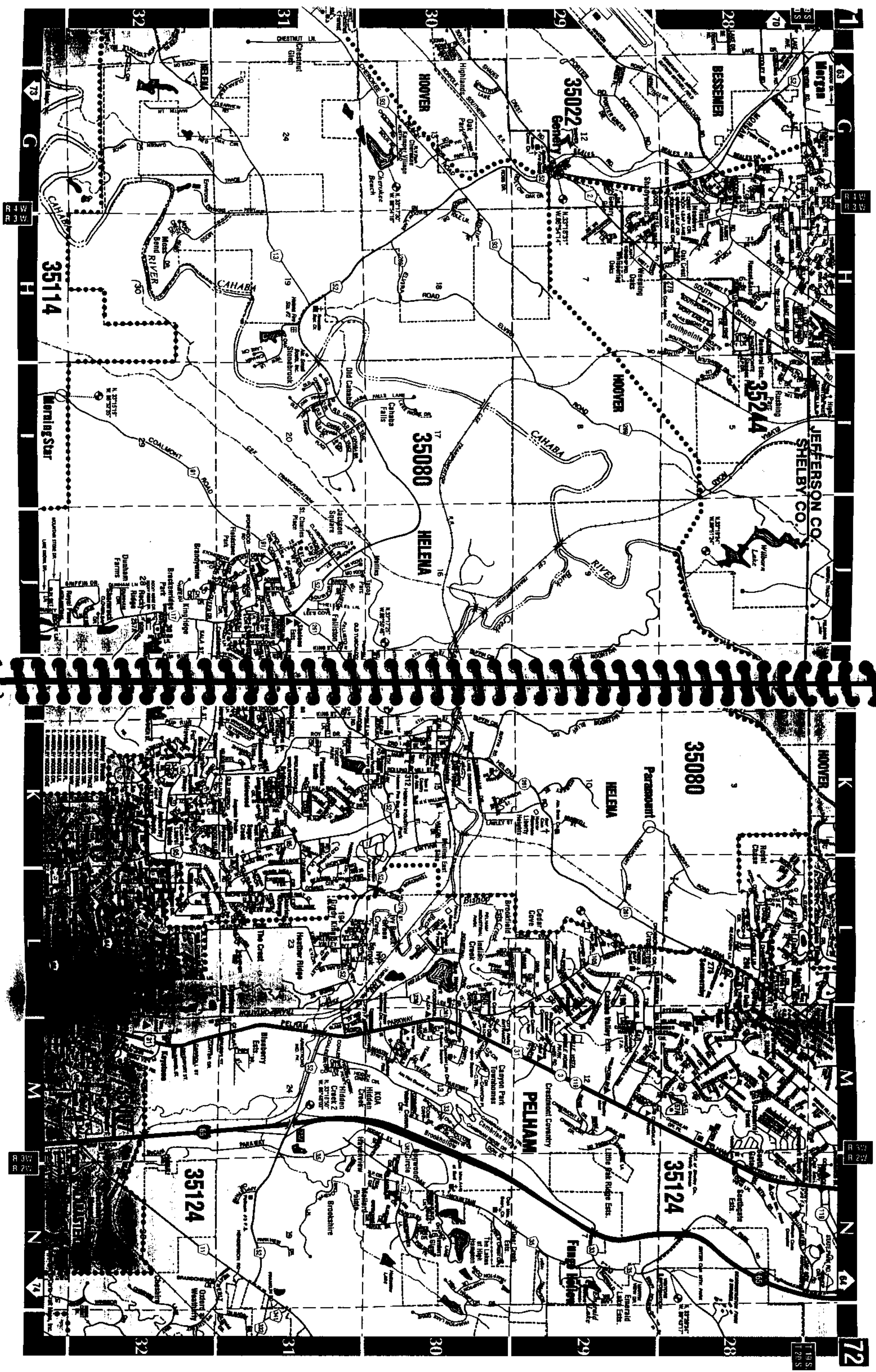
56

1785
1795





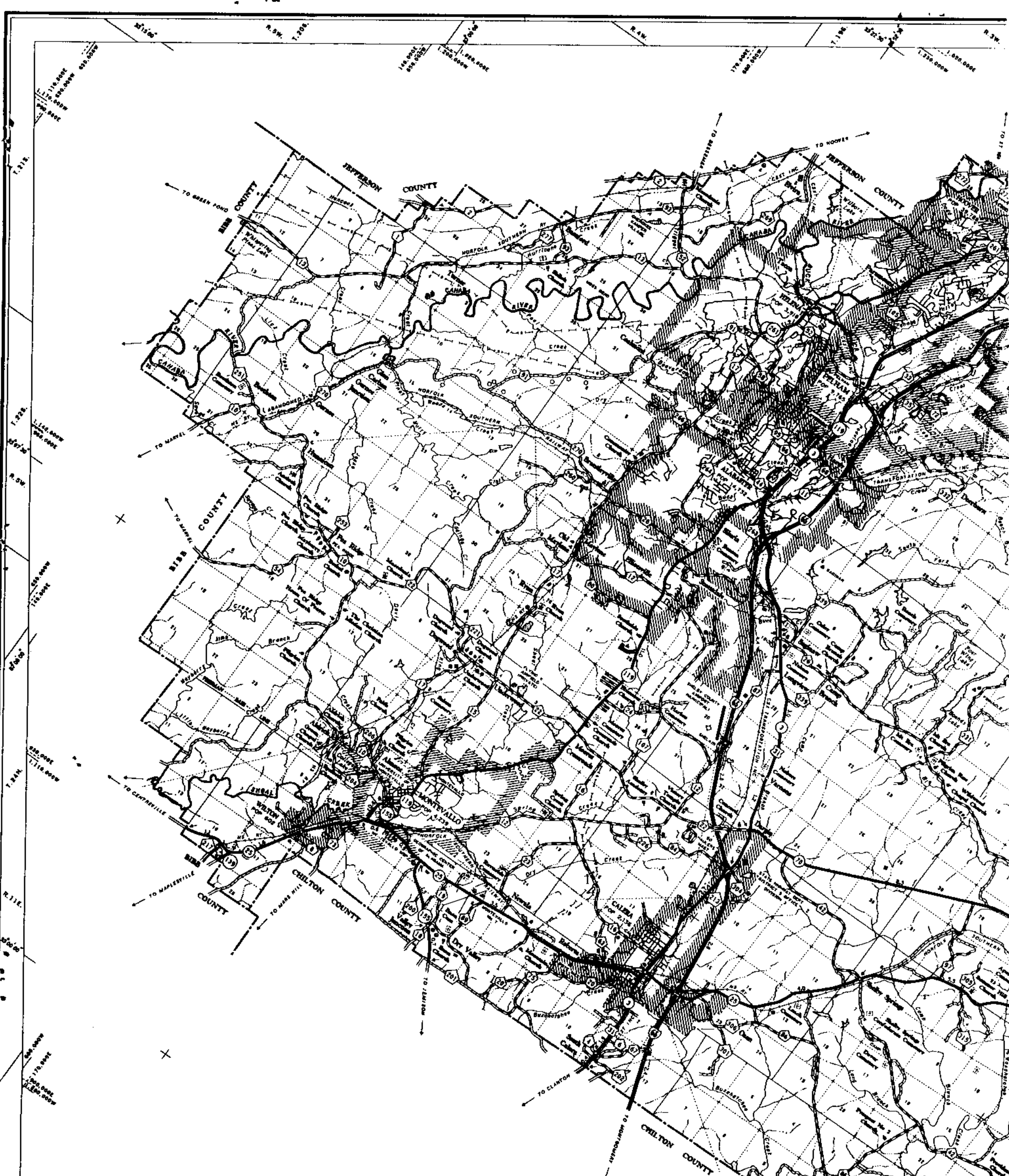




R 1 W
R 3 W

R 3 W
R 2 W

1198
1208



LEGEND

ROADS AND ROADWAY FEATURES

UNIMPROVED ROAD
GRAVEL AND GRAVEL ROAD
GRAVEL, STONE OR SOIL ROAD
2 LANE PAVED STATE ROUTE
4 LANE DIVIDED STATE ROUTE
4 LANE UNDIVIDED STATE ROUTE
OTHER 2 LANE PAVED ROAD
OTHER 4 LANE DIVIDED PAVED ROAD
OTHER 4 LANE UNDIVIDED PAVED ROAD
SIDE ROAD AND STREET
INTERCHANGE

ROAD SYSTEM DESIGNATION

INTERSTATE HIGHWAY SYSTEM
U.S. NUMBERED SYSTEM
STATE HIGHWAY SYSTEM
COUNTY ROAD NUMBER
NATIONAL FOREST HIGHWAY

NAVIGATION

DUCK, PIER OR LANDING
FERRY (PP-FREE, TP-TOLL)
LIGHT - NAUTICAL
LONGBOW
NAVIGABLE STREAM
NAVIGABLE STREAM-LOCK AND DAM
LEVEE

CITY AND VILLAGE CENTERS

STATE CAPITAL
COUNTY SEAT
OTHER TOWNS AND VILLAGES
INCORPORATED CITY OR TOWN

MISCELLANEOUS STRUCTURES

DAM WITH ROAD
HIGHWAY TUNNEL
CAUSEWAY
MINOR DRAINAGE STRUCTURE
FORD-ROAD ESTABLISHMENT
SATTLE BOARD
GATE ACROSS ROAD

RAILROADS

RAILROAD
RAILROAD IN JUNCTION
RAILROAD STATION
GRADE CROSSING
RAILROAD ABOVE
RAILROAD BELOW
RAILROAD BRIDGE
RAILROAD TUNNEL
ABANDONED RAILROAD

HIGHWAY BRIDGES

HIGHWAY BRIDGE-GENERAL
DRAWBRIDGE
ARCH BRIDGE
TOWNSHIP BRIDGE IS STEEL-ROAD
CANTILEVER BRIDGE
HIGHWAY GRADE SEPARATION

AIRPORTS

AIRPORT-GENERAL
MILITARY AIRFIELD
AIRPORT-COMPLET FACILITIES
AIRPORT-LIMITED FACILITIES
HELIPORT
LANDING AREA OR STRIP

INDUSTRIAL

INDUSTRIAL PARK
MINE, SHAFT OR DRIFT
MINE OPENING
OIL OR GAS WELL
STORAGE TANK
PUMPING STATION-OIL OR GAS
RAISING OR PUMPING STATION

DRAINAGE AND NATURAL FEATURES

INTERMITTENT STREAM
HARBOR STREAM
WIDE STREAM-DAM
LAKE, RESERVOIR OR POND
MARSH OR SWAMP
OVERFLOW LAKE
MOUNTAIN RANGE
TERRACE

PUBLIC SERVICE FACILITIES

COURTHOUSE
POST OFFICE
WATER TANK ON STAND PIPE
PIPE LINE-OIL
PIPE LINE-GAS
TRANSMISSION LINE
POWER PLANT
PUMP SUB-STATION
UNDERGROUND TELEPHONE CABLE
ROAD OR TELEVISION STATION
HIGHWAY GARAGE
HIGHWAY DEPARTMENT OFFICE
RADIO, MICROPHONE TOWER, ETC.
POLICE OR SHERIFF STATION
STATE TROOPER HEADQUARTERS
BOATSTATION
FIRE STATION

CHURCHES, CEMETERIES, ETC.

CHURCH
CHURCH AND SCHOOL
CEMETERY
CHURCH AND CEMETERY
MUSEUM OR REST HOME
HOSPITAL

EDUCATIONAL AND CORRECTIONAL

SCHOOLHOUSE
OTHER EDUCATIONAL ESTABLISHMENT
TOWN HALL OR COMMUNITY CENTER
AGRICULTURAL EXPERIMENT STATION
PRISON OR CORRECTIONAL INSTITUTION

BOUNDARIES

STATE BOUNDARY
COUNTY BOUNDARY
INCORPORATED CITY BOUNDARY
TOWNSHIP LINE
SECTION LINE
LAND GRANT LINE
WILDLIFE MANAGEMENT AREA
NATIONAL OR STATE FOREST BOUNDARY
STATE PARK BOUNDARY
MILITARY RESERVATION BOUNDARY

MISCELLANEOUS

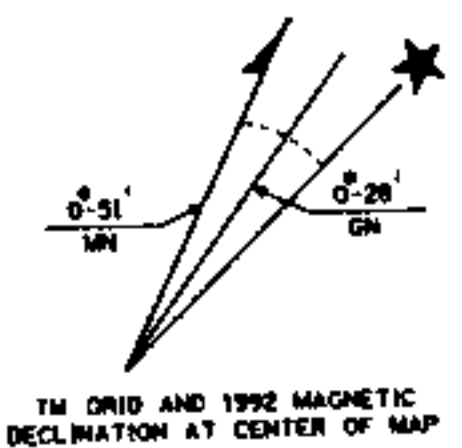
ARMORY
ARTERY
BARBARE OR RUBBISH DUMP
SCRAP METAL JUNKYARD
AUTOMOBILE JUNKYARD
SEWER DISPOSAL PLANT
SHOPPING CENTER
RECREATION OR WELCOME CENTER
TRIANGULATION OR INVERTED STATION
BENCH MARK-VEH ELEVATION
DOT INDICATES ACTUAL LOCATION
OF FEATURE WHERE SPACE IS NOT
AVAILABLE



THIS MAP WAS PREPARED BY THE ALABAMA HIGHWAY BUREAU OF SURVEYING AND MAPPING IN COOPERATION WITH THE U.S. DEPARTMENT OF COMMERCE BUREAU OF PUBLIC ROADS. THE STATE OF ALABAMA HAS THE HONOR OF THE FIRST PUBLICATION OF THIS MAP. THE FIRST EDITION WAS PUBLISHED IN 1927. THE SECOND EDITION WAS PUBLISHED IN 1937. THE THIRD EDITION WAS PUBLISHED IN 1947. THE FOURTH EDITION WAS PUBLISHED IN 1957. THE FIFTH EDITION WAS PUBLISHED IN 1967. THE SIXTH EDITION WAS PUBLISHED IN 1977. THE SEVENTH EDITION WAS PUBLISHED IN 1987. THE EIGHTH EDITION WAS PUBLISHED IN 1997. THE NINTH EDITION WAS PUBLISHED IN 2007. THE TENTH EDITION WAS PUBLISHED IN 2017.

GENERAL HIGHWAY SHELBY COUNTY ALABAMA

PREPARED BY
STATE OF ALABAMA HIGHWAY
BUREAU OF SURVEYING AND MAPPING
IN COOPERATION
U.S. DEPARTMENT OF COMMERCE
BUREAU OF PUBLIC ROADS



COUNTY POPULATION, 1980 CENSUS 89,968
COUNTY AREA IN SQUARE MILES 900

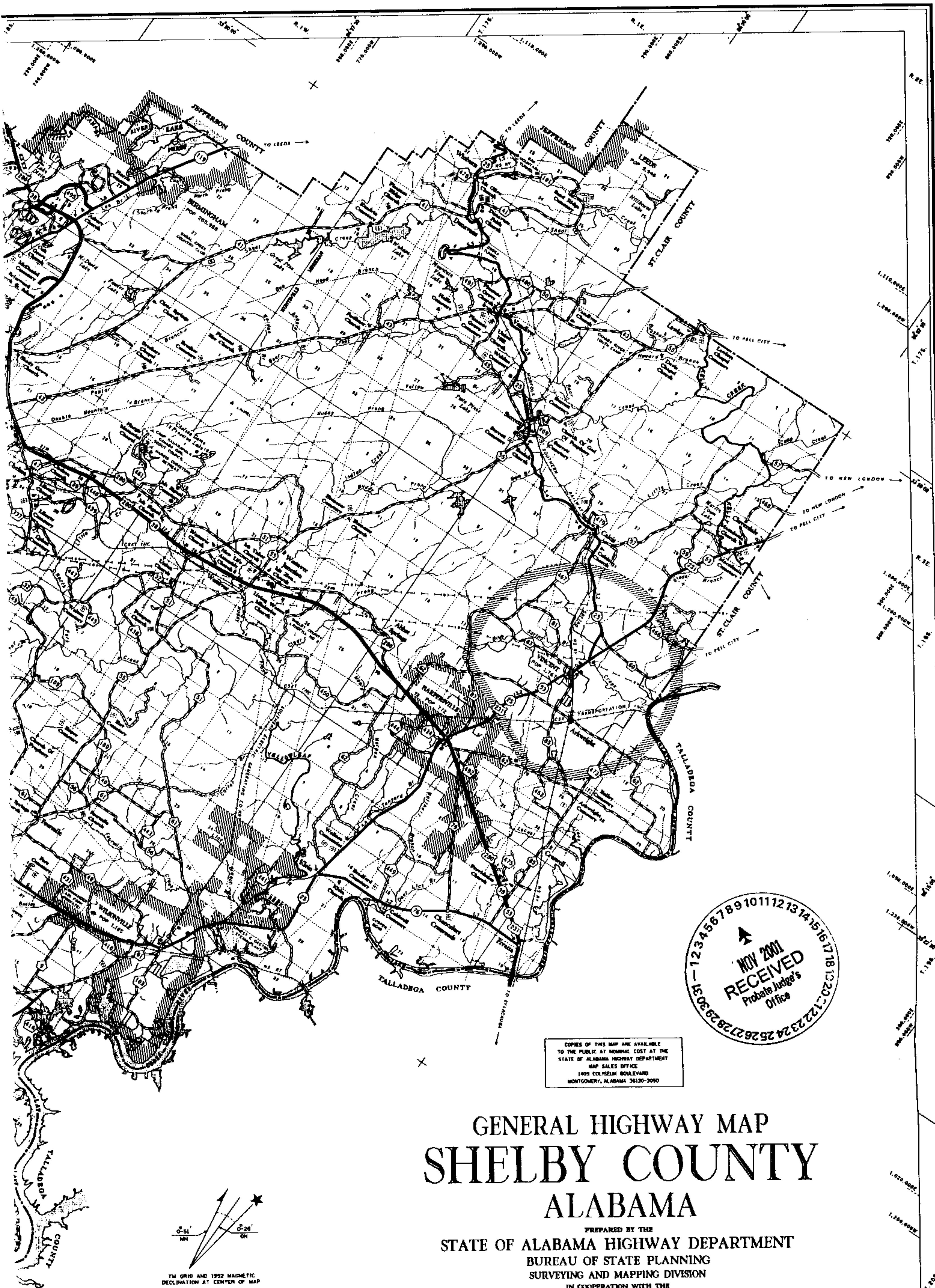
BECAUSE OF THE SCALE OF THIS MAP THE STATE OF ALABAMA HIGHWAY BUREAU OF SURVEYING AND MAPPING AND ITS AFFILIATES ASSUME NO RESPONSIBILITY FOR INACCURACIES IN ROAD ALIGNMENTS, CONFIGURATIONS OF INTERSECTIONS, AND OTHER RELATED DATA.

CITY, MILITARY AND OTHER RELATED BOUNDARIES ARE PLOTTED USING ALL AVAILABLE DESCRIPTIONS AT DATE OF REVISION. THE HIGHWAY DEPARTMENT CANNOT ACCEPT RESPONSIBILITY FOR INACCURACIES RESULTING FROM UNOBTAINABLE OR UNKNOWN DATA.



199

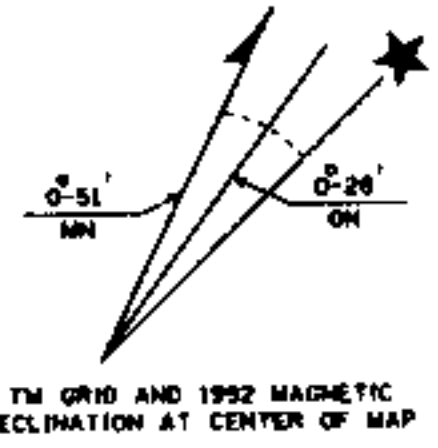
Control by NATIONAL OCEAN SURVEY
Transverse Mercator Projection, 1927 North American Datum, 18,400
Compiled by photogrammetric methods from aerial photographs
Prepared and plotted from the computer



COPIES OF THIS MAP ARE AVAILABLE
TO THE PUBLIC AT NOMINAL COST AT THE
STATE OF ALABAMA HIGHWAY DEPARTMENT
MAP SALES OFFICE
1405 COLLEGE BOULEVARD
MONTGOMERY, ALABAMA 36130-3090

GENERAL HIGHWAY MAP SHELBY COUNTY ALABAMA

PREPARED BY THE
STATE OF ALABAMA HIGHWAY DEPARTMENT
BUREAU OF STATE PLANNING
SURVEYING AND MAPPING DIVISION
IN COOPERATION WITH THE
U.S. DEPARTMENT OF TRANSPORTATION
FEDERAL HIGHWAY ADMINISTRATION



COUNTY POPULATION, 1990 CENSUS 88,368
COUNTY AREA IN SQUARE MILES 800

DUE TO THE SCALE OF THIS MAP THE STATE OF ALABAMA HIGHWAY DEPARTMENT AND ITS AFFILIATES ASSUME NO RESPONSIBILITY FOR INACCURACIES IN ROAD ALIGNMENTS, CONFIGURATION OF INTERSECTIONS, AND OTHER RELATED DATA.

CITY, MILITARY AND OTHER RELATED BOUNDARIES ARE PLOTTED USING ALL AVAILABLE DESCRIPTIONS AT DATE OF REVISION. THE HIGHWAY DEPARTMENT CANNOT ACCEPT RESPONSIBILITY FOR INACCURACIES RESULTING FROM UNOBTAINABLE OR UNKNOWN DATA.



1992

Control by NATIONAL OCEAN SURVEY and ALABAMA HIGHWAY DEPARTMENT
Transverse Mercator Projection, 1927 North American Datum, 16,800 feet per inch
Compiled by photogrammetric methods from aerial photographs taken 1969. Field examination 1990.
Designed and drafted from the computer aided drafting and design system.



11/16/2001-49807
12:18 PM CERTIFIED
SHELBY COUNTY JUDGE OF PROBATE
DIA MEL .00