

Map Book 29 Page 17

LOT 2-A



STATE OF ALABAMA
COUNTY OF SHELBY

The undersigned, Charles A. Williams, a registered land surveyor in the State of Alabama, do hereby certify that the foregoing plat, map or plan is a true and correct copy of the original as the same appears in my office and that it is a true and correct copy of the original as the same appears in my office and that it is a true and correct copy of the original as the same appears in my office.

Witness my hand and seal this 12 day of July, 2001.



FOR RECORDING PURPOSES ONLY:
BY: *[Signature]* DATE: 10-23-01

STATE OF ALABAMA
COUNTY OF SHELBY

I, *[Signature]*, a Notary Public in and for the County of Shelby, State of Alabama, do hereby certify that the foregoing plat, map or plan is a true and correct copy of the original as the same appears in my office and that it is a true and correct copy of the original as the same appears in my office.

Witness my hand and seal this 13 day of July, 2001.

BY: *[Signature]* DATE: 10-23-01

STATE OF ALABAMA
COUNTY OF SHELBY

I, *[Signature]*, a Notary Public in and for the County of Shelby, State of Alabama, do hereby certify that the foregoing plat, map or plan is a true and correct copy of the original as the same appears in my office and that it is a true and correct copy of the original as the same appears in my office.

Witness my hand and seal this 13 day of July, 2001.

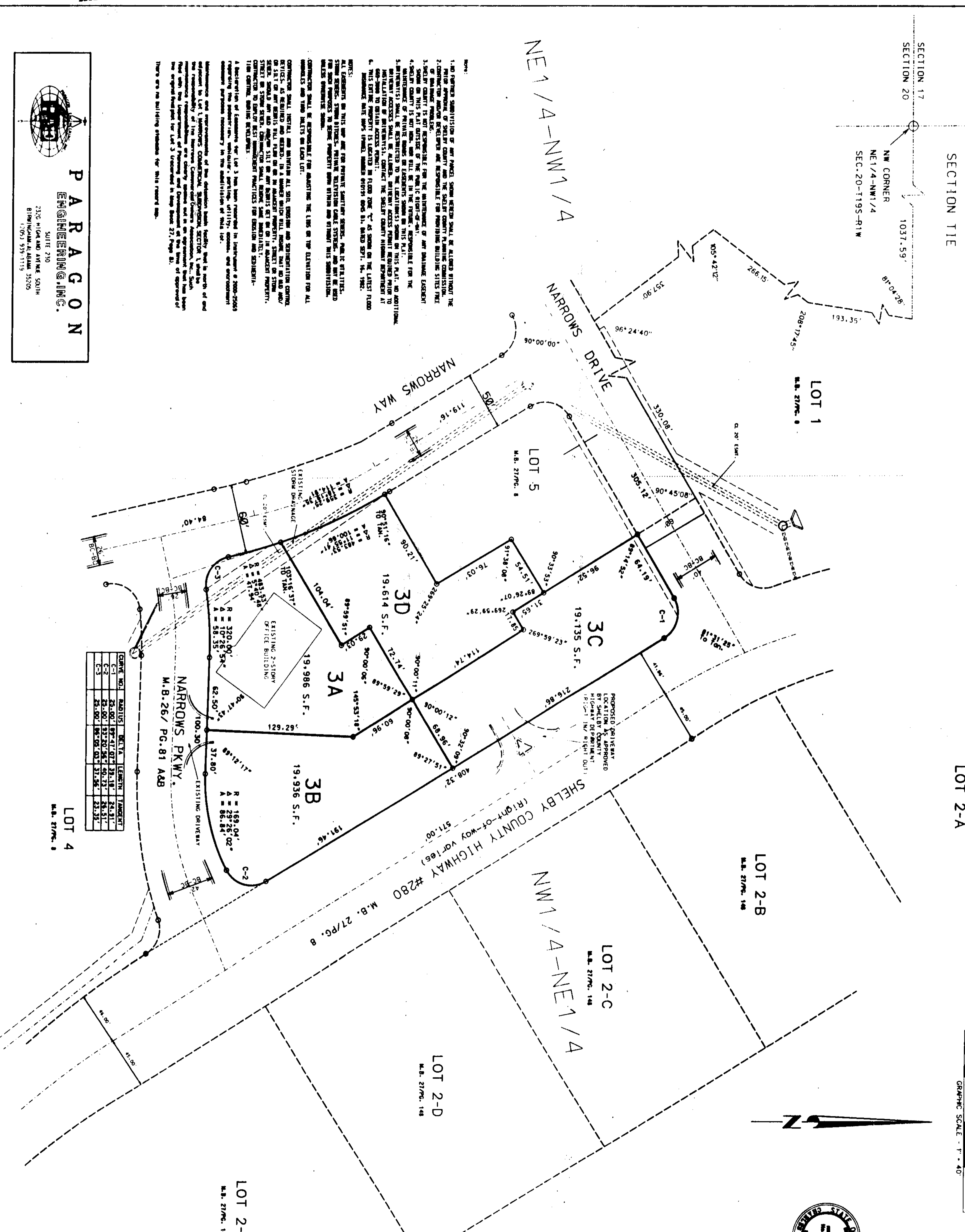
BY: *[Signature]* DATE: 10-23-01

THE PURPOSE OF THIS SUBDIVISION IS TO
CREATE COMMERCIAL LOTS FOR DEVELOPMENT.
RESURVEY OF LOT 3 OF
THE NARROWS COMMERCIAL SUBDIVISION
SECTOR 1

STRUNG IN THE NE1/4 OF THE NE1/4
OF SECTION 20, TWP. 9 S., R. 50 E., 11TH DIST.
SHELBY COUNTY, ALABAMA

FOR:
MA.S.I., L.L.C.
c/o Engstrom and Associates, Inc.
2336 20th Avenue South
Birmingham, Alabama 35223

PE1 JA 800038 FILE# RESURV.LOT3.dgn



200110500047395
Shelby City Judge of Probate, AL
11/05/2001 08:08:09AM FILED/CERT

PARAGON
ENGINEERING, INC.
SUITE 210
2336 20th Avenue South
Birmingham, Alabama 35209
(205) 938-1119

