

RELEASE

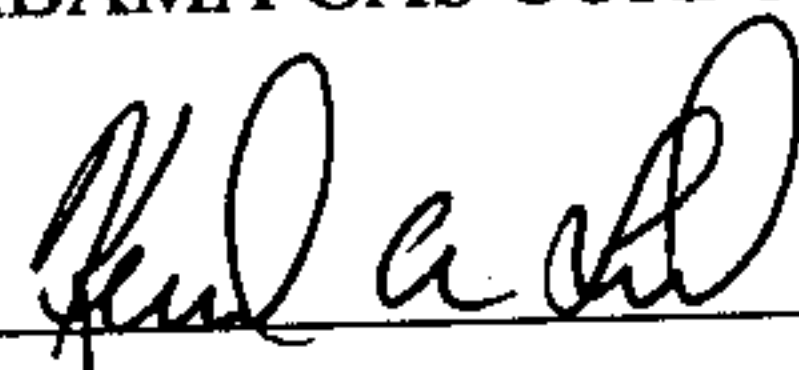
KNOW ALL MEN BY THESE PRESENTS, THAT the undersigned ALABAMA GAS CORPORATION, a corporation which is a public utility and which has certain interest pursuant to a 30' Alagasco easement located in the Ivy Brook Subdivision.

WHEREAS, Alabama Gas Corporation has been requested to release its interests in said 30' easement and has determined that it has no facilities located in said easement and that it has no plans to install facilities therein;

NOW THEREFORE, Alabama Gas Corporation does hereby RELEASE FOREVER its interest in said easement as shown on attached map marked Exhibit A and made a part hereof.

IN WITNESS WHEREOF, Alabama Gas Corporation has hereunto set its hand and seal this 16th day of October, 2001.

ALABAMA GAS CORPORATION

BY: 

Its VP

Sworn to and subscribed
Before me this 19th
Day of October, 2001.



Notary Public

12-10-2001

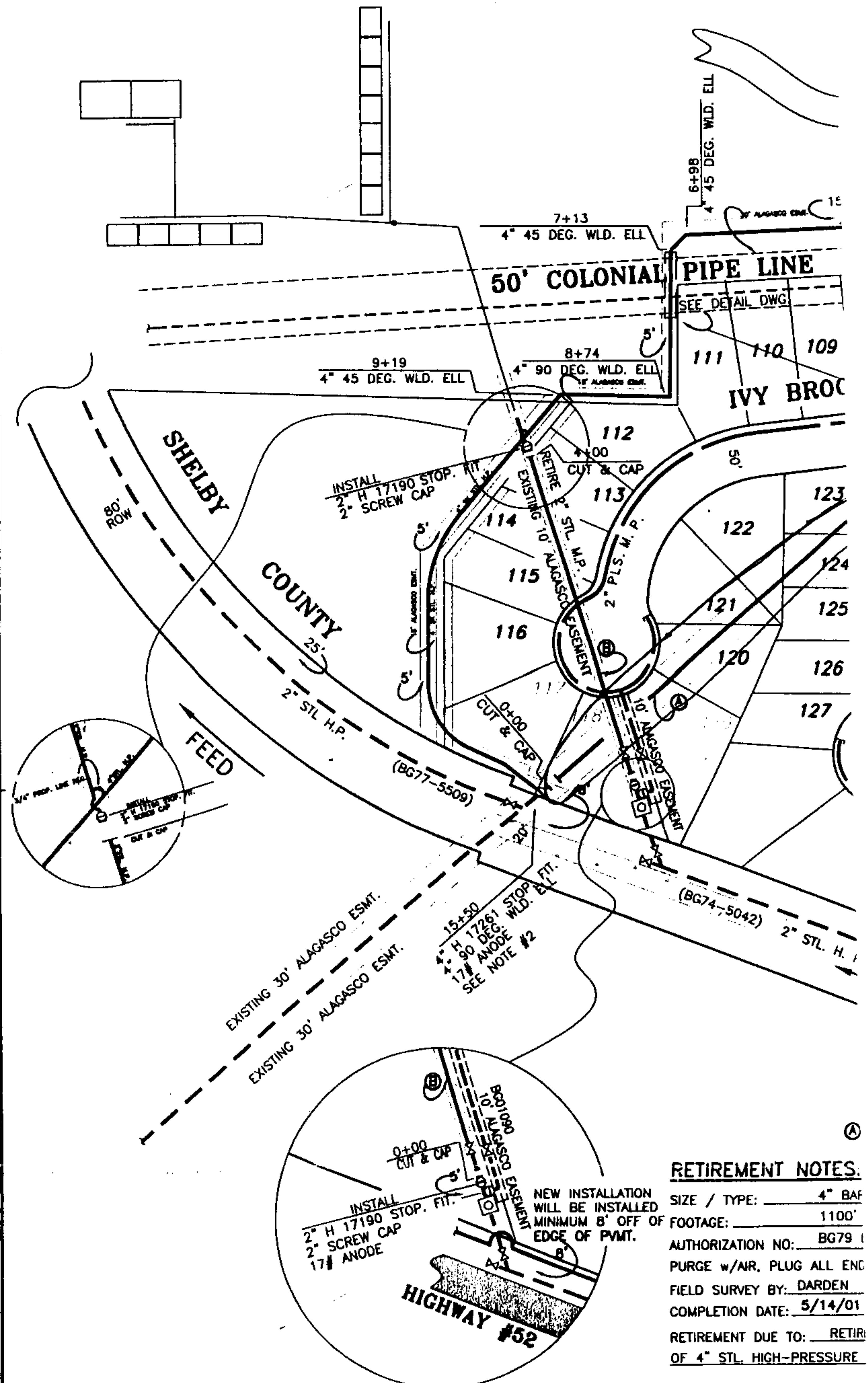
My Commission Expires:

Inst # 2001-46508

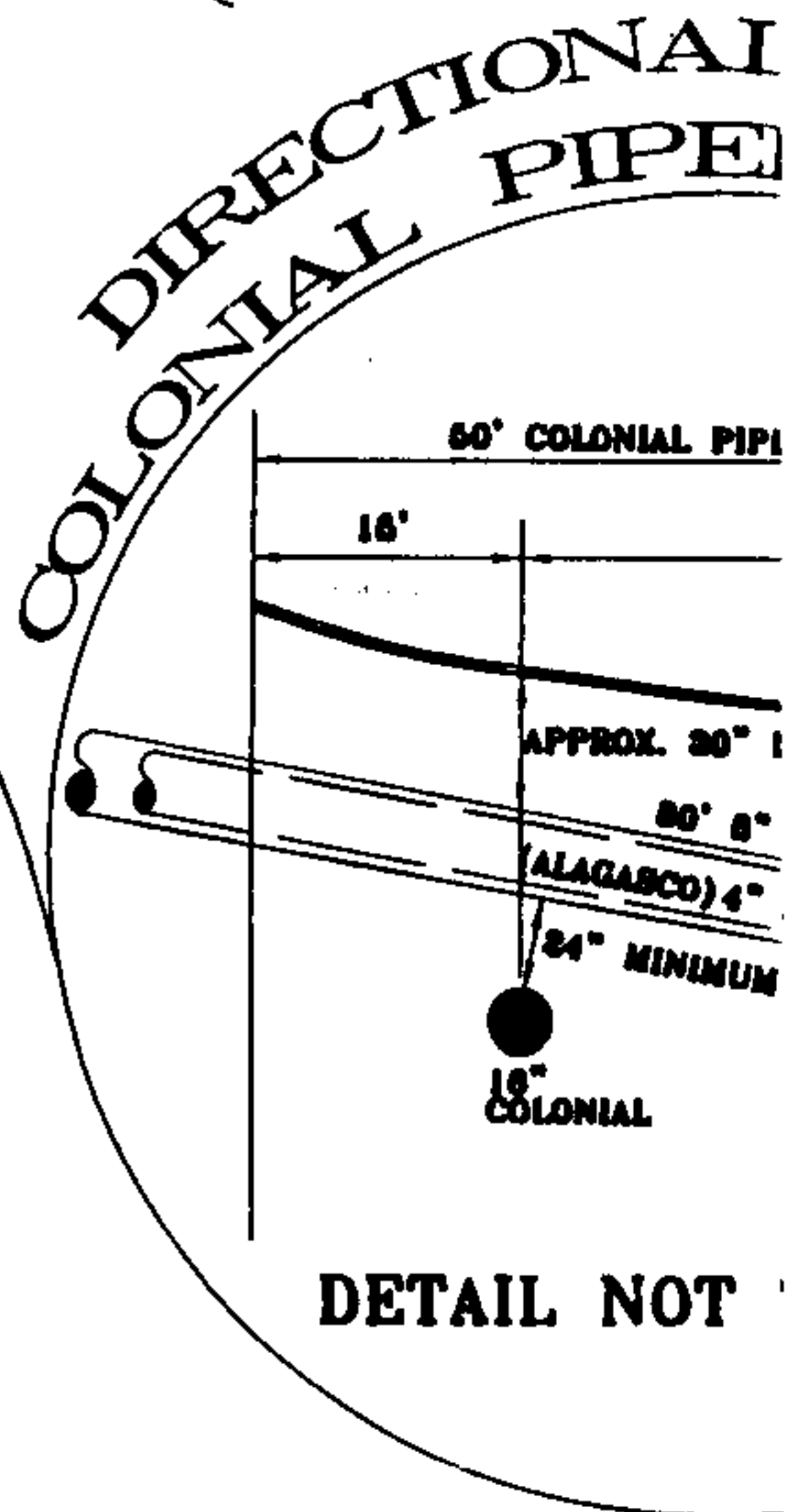
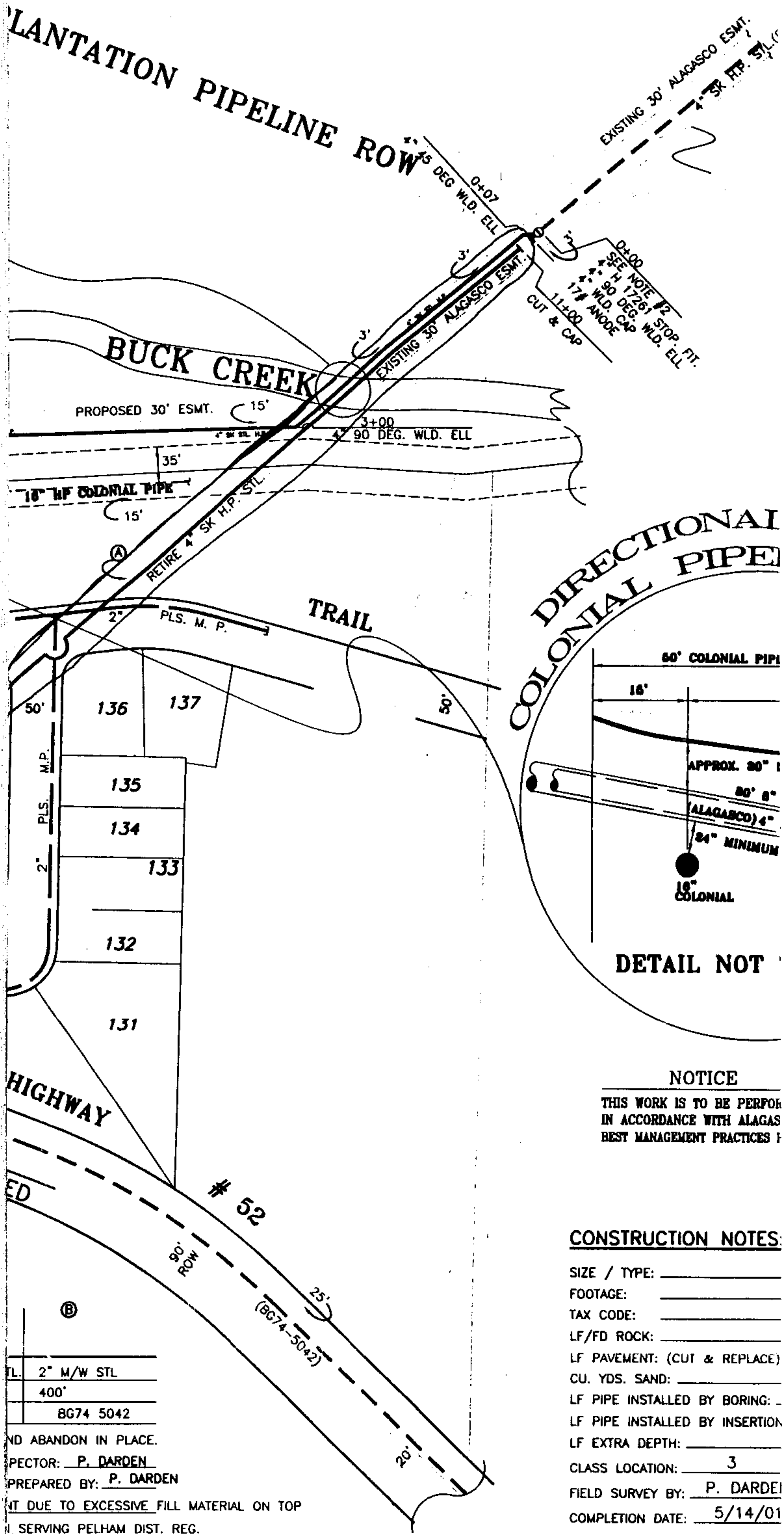
10/29/2001-46508
11:58 AM CERTIFIED
SHELBY COUNTY JUDGE OF PROBATE
003 CH 17.00

$$\frac{(350) * (4.50)}{(2) * (.156)} = 5048$$

$$\frac{5048}{35,000} = .1442 \text{ OR } 14.42\%$$



COMPLETE MAIN _____	SCALE 1" = 100' DATE 02/13/01	ALABAMA GAS CORPORATION BIRMINGHAM ENGINEERING DEPARTMENT
EXISTING MAINS - - - - -	DRAWN BY PHILIP DARDEN	



NOTICE
THIS WORK IS TO BE PERFORMED IN ACCORDANCE WITH ALAGASCO BEST MANAGEMENT PRACTICES

CONSTRUCTION NOTES:

SIZE / TYPE: _____
FOOTAGE: _____
TAX CODE: _____
LF/FD ROCK: _____
LF PAVEMENT: (CUT & REPLACE)
CU. YDS. SAND: _____
LF PIPE INSTALLED BY BORING: _____
LF PIPE INSTALLED BY INSERTION: _____
LF EXTRA DEPTH: _____
CLASS LOCATION: 3
FIELD SURVEY BY: P. DARDEN
COMPLETION DATE: 5/14/01
INSTALL ONE 1 LB. ANODE PER

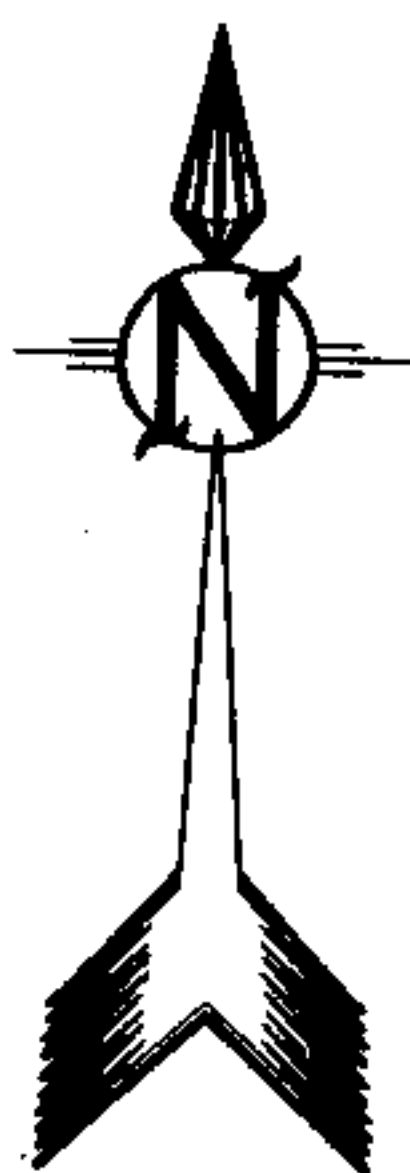
TL	2" M/W STL
	400'
	BG74 5042

AND ABANDON IN PLACE.
INSPECTOR: P. DARDEN
PREPARED BY: P. DARDEN
NOT DUE TO EXCESSIVE FILL MATERIAL ON TOP
SERVING PELHAM DIST. REG.

LOCATION & MAIN DATA

IVY BROOK RELOCATION

PELHAM, ALABAMA

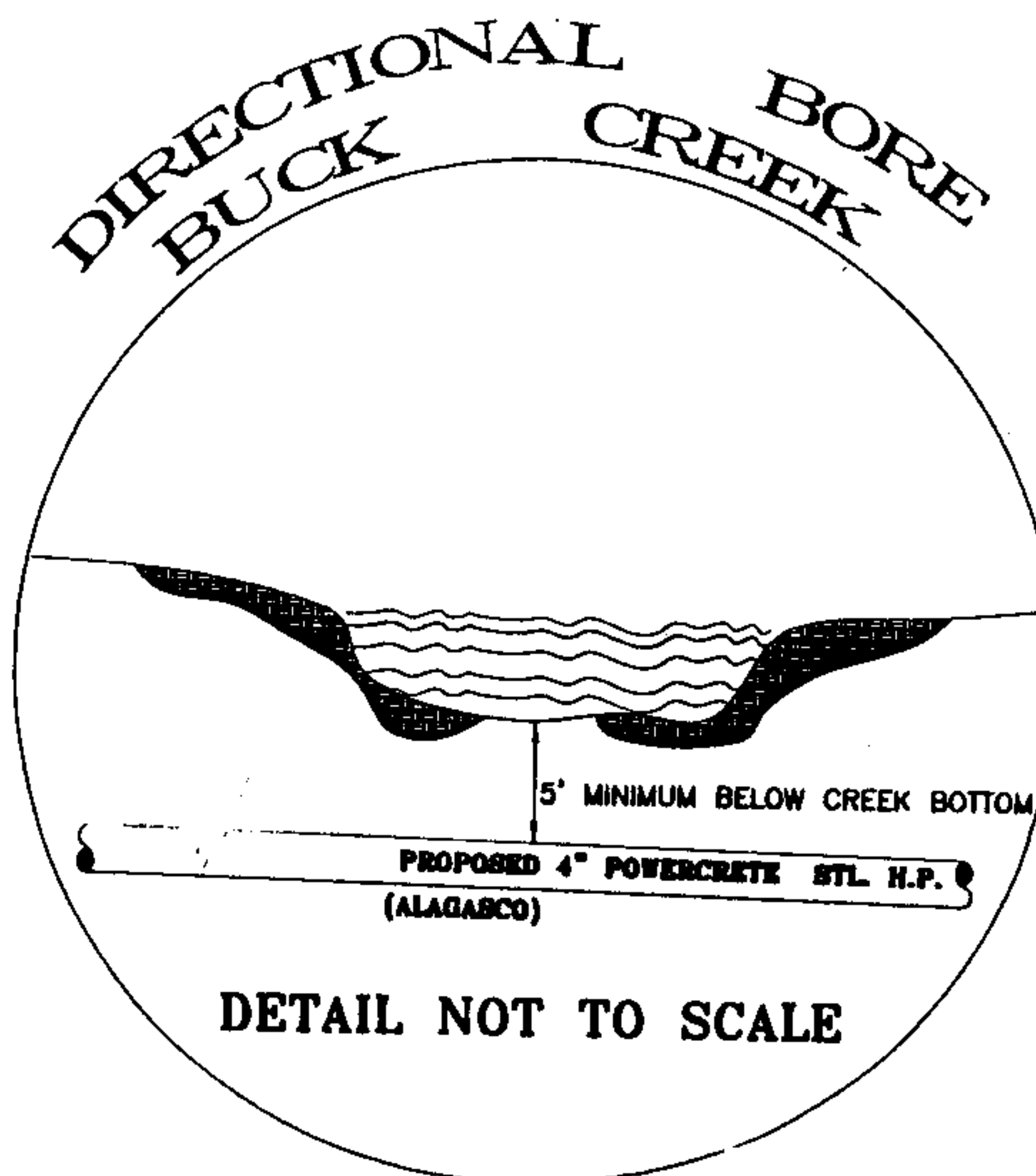
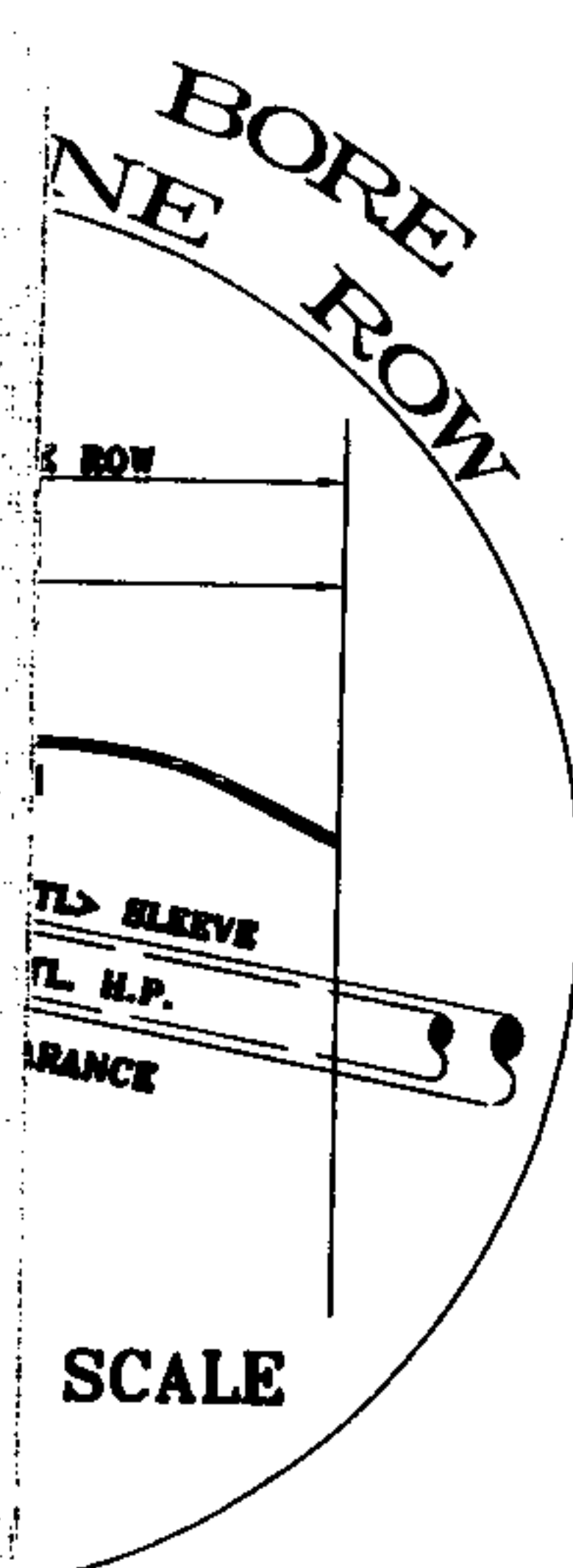


NW 23-20S-03W
PELHAM, ALABAMA

Inst # 2001-46508

10/29/2001-46508
11:58 AM CERTIFIED
SHELBY COUNTY JUDGE OF PROBATE

003 CH 17.00



NOTES

- #1 MINIMUM DEPTH OF 6' WILL BE MAINTAINED ACROSS LOTS 123 THRU 128
- #2 THIS WORK WILL BE COORDINATED BY DISTRIBUTION CONTROL DURING TIE-IN TO LOWER THE PRESSURE
- #3 THE NEW SERVICE LINE FROM TENNYSON MUST BE IN PLACE BEFORE THE 2" IS CUT BELOW THE REGULATOR
- #4 CONTRACTOR WILL BE RESPONSIBLE FOR CONTACTING COLONIAL PIPELINE REPRESENTATIVE BOBBY STALLENS @ 919-4045 OR DIG. BEEPER # 877-899-2712 THREE DAYS PRIOR TO ANY KIND OF CONSTRUCTION ON COLONIAL PIPELINE ROW.

COMPLETE	
4" STEEL	
1550	
BPO	
1940	

40	
300	

500	

STOMERS / LOTS: _____
INSPECTOR: P. DARDEN
PREPARED BY: P. DARDEN
OF DETECTABLE WIRE.

PRESSURE NOTES:	HIGH
DESIGN LOAD CFH:	---
INIT PRESS:	MAX PSIG: 350
	MIN PSIG: 175
TERM PRESS:	MAX PSIG: 350
	MIN PSIG: 175
MAOP PSIG:	350
SYS MAOP PSIG:	350
TEST PSIG:	525
TEST MEDIUM:	AIR/NITROGEN
TEST PERIOD (HR):	24

COMPLETION REPORT DRAWING
OFFICE - HOLD

EXHIBIT "A"

SKETCH OF COMPLETE WORK

IDENTIFICATION NO. BG01094 & R

PLANT BIRMINGHAM