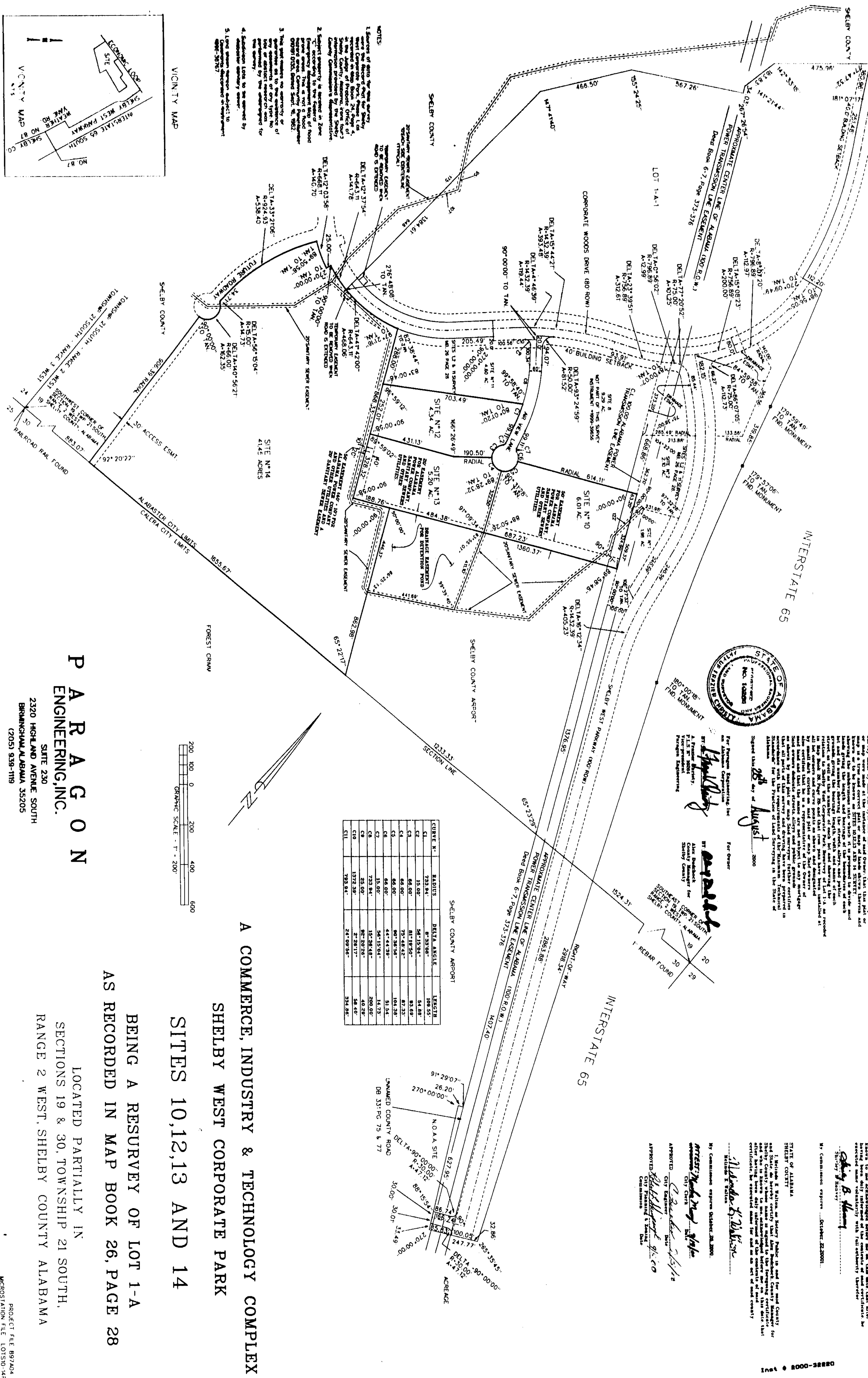


Map Book 27 page 61



P A R A G O N
 ENGINEERING, INC.
 SUITE 230
 2320 HIGHLAND AVENUE SOUTH
 BRUNINGHAM, ALABAMA 35205
 (205) 939-1119

A COMMERCE, INDUSTRY & TECHNOLOGY COMPLEX
 SHELBY WEST CORPORATE PARK
 SITES 10, 12, 13 AND 14
 BEING A RESURVEY OF LOT 1-A
 AS RECORDED IN MAP BOOK 26, PAGE 28
 LOCATED PARTIALLY IN
 SECTIONS 19 & 30, TOWNSHIP 21 SOUTH,
 RANGE 2 WEST, SHELBY COUNTY ALABAMA

STATE OF ALABAMA
 SHELBY COUNTY
 I, Shelby B. Hoover, as Surveyor, do hereby certify that this plat or map was made pursuant to a survey conducted by me or under my direct supervision and that the same is a true and correct copy of the original survey as shown to me by the engineer or surveyor who conducted the same. I hereby certify that the same is a true and correct copy of the original survey as shown to me by the engineer or surveyor who conducted the same. I hereby certify that the same is a true and correct copy of the original survey as shown to me by the engineer or surveyor who conducted the same.

28th August 2000

STATE OF ALABAMA
 SHELBY COUNTY
 I, Shelby B. Hoover, as Surveyor, do hereby certify that this plat or map was made pursuant to a survey conducted by me or under my direct supervision and that the same is a true and correct copy of the original survey as shown to me by the engineer or surveyor who conducted the same. I hereby certify that the same is a true and correct copy of the original survey as shown to me by the engineer or surveyor who conducted the same. I hereby certify that the same is a true and correct copy of the original survey as shown to me by the engineer or surveyor who conducted the same.