

MAP BOOK 24 PAGE 45

TRIANGLE RESURVEY OF LOT 3, BROOK HIGHLAND PLAZA

AS RECORDED IN MAP BOOK 16, OR PAGE 16, IN THE OFFICE OF THE CLERK OF PROBATE AND RECORDS SITUATED IN SECTION 21, TOWNSHIP 18 NORTH, RANGE 1 WEST, SHELBY COUNTY, ALABAMA.

PREPARED BY: K. B. WYRGANT & ASSOCIATES, P.C. 2201 OAKLAND VALLEY DRIVE BRUNSWICK, ALABAMA 35003-2801 TEL: (205) 991-2800 FAX: (205) 991-2811

DATE: 2-18-98

SCALE: 1" = 10'-0"

STATE OF ALABAMA COUNTY OF SHELBY The undersigned, Kenneth B. Wyrgant, a registered Engineer, Land Surveyor and Triangle Development, Inc., Owner, Henry County, Alabama, do hereby certify that the plat and map hereon shown is a true and correct copy of the plat and map as the same were made at the time of said survey and that the same were made in accordance with the provisions of the laws of the State of Alabama and the rules and regulations of the Board of Engineers and Surveyors of the State of Alabama. The plat and map hereon shown is a true and correct copy of the plat and map as the same were made in accordance with the provisions of the laws of the State of Alabama and the rules and regulations of the Board of Engineers and Surveyors of the State of Alabama. The plat and map hereon shown is a true and correct copy of the plat and map as the same were made in accordance with the provisions of the laws of the State of Alabama and the rules and regulations of the Board of Engineers and Surveyors of the State of Alabama.

DATE: February 18, 1998

BY: Kenneth B. Wyrgant, P.E., L.S. #11788 TRIANGLE DEVELOPMENT, INC., Owner

BY: ALMANT BANK, Mortgagee

STATE OF ALABAMA COUNTY OF SHELBY

I, the undersigned, in Henry County in said State, Henry County, Alabama, do hereby certify that the plat and map hereon shown is a true and correct copy of the plat and map as the same were made in accordance with the provisions of the laws of the State of Alabama and the rules and regulations of the Board of Engineers and Surveyors of the State of Alabama. The plat and map hereon shown is a true and correct copy of the plat and map as the same were made in accordance with the provisions of the laws of the State of Alabama and the rules and regulations of the Board of Engineers and Surveyors of the State of Alabama.

BY: State of Alabama My Commission expires: 1-18-2001

STATE OF ALABAMA COUNTY OF SHELBY I, the undersigned, in Henry County in said State, Henry County, Alabama, do hereby certify that the plat and map hereon shown is a true and correct copy of the plat and map as the same were made in accordance with the provisions of the laws of the State of Alabama and the rules and regulations of the Board of Engineers and Surveyors of the State of Alabama. The plat and map hereon shown is a true and correct copy of the plat and map as the same were made in accordance with the provisions of the laws of the State of Alabama and the rules and regulations of the Board of Engineers and Surveyors of the State of Alabama.

BY: My Commission expires: 9/14/1998

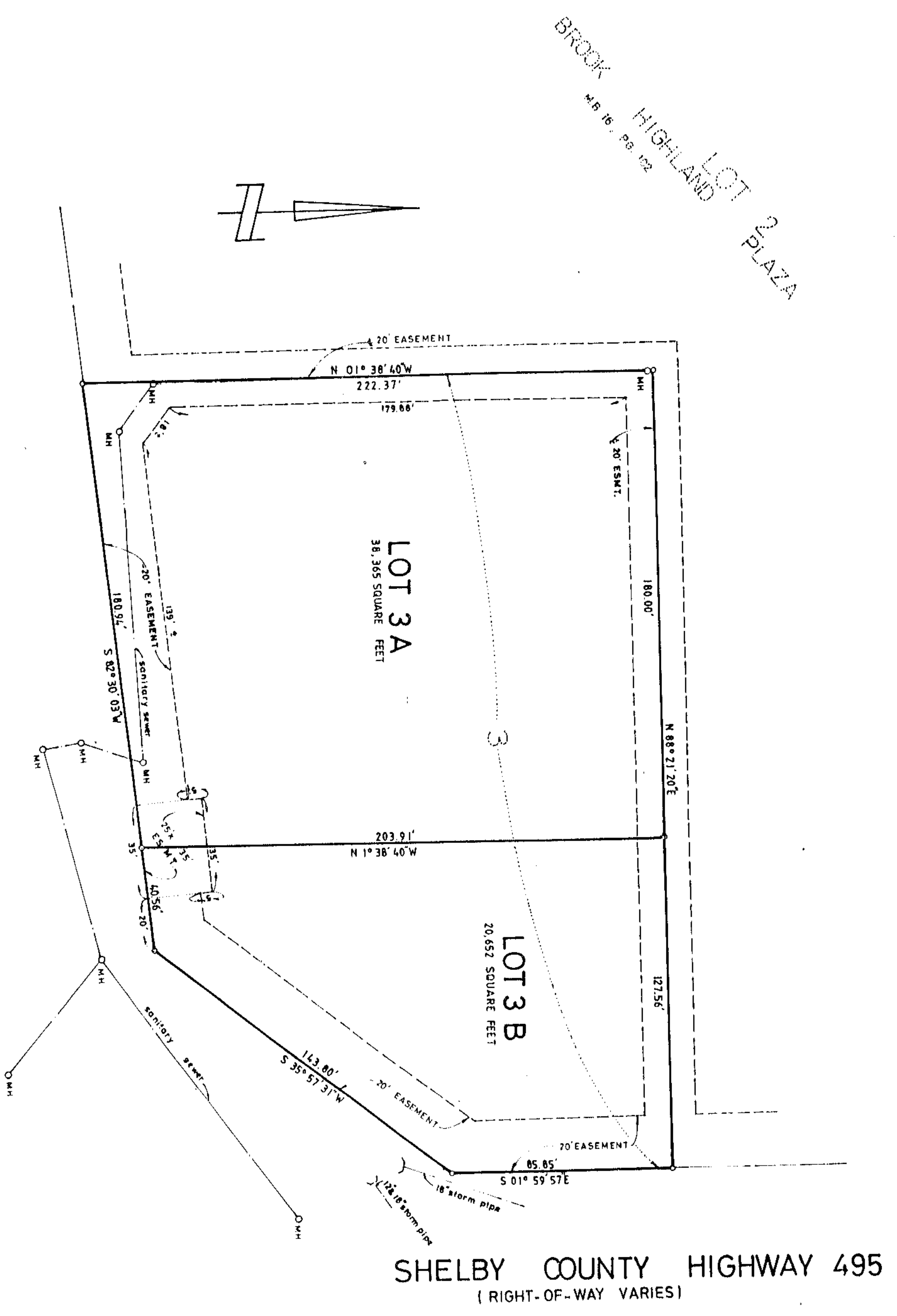
STATE OF ALABAMA COUNTY OF SHELBY I, the undersigned, in Henry County in said State, Henry County, Alabama, do hereby certify that the plat and map hereon shown is a true and correct copy of the plat and map as the same were made in accordance with the provisions of the laws of the State of Alabama and the rules and regulations of the Board of Engineers and Surveyors of the State of Alabama. The plat and map hereon shown is a true and correct copy of the plat and map as the same were made in accordance with the provisions of the laws of the State of Alabama and the rules and regulations of the Board of Engineers and Surveyors of the State of Alabama.

BY: My Commission expires: 2/18/1998

APPROVED: CITY ENGINEER DATE: 2-19-98

APPROVED: DATE: 2/18/98

MAP CE, COM 15-33



U.S. HIGHWAY 280 (RIGHT-OF-WAY VARIES)

NOTES ALL EASEMENTS ON THIS MAP ARE THE PROPERTY OF THE SEVERAL OWNERS, TRIMBLE DEVELOPMENT, INC., AND ANY OTHER PARTY WHOSE INTERESTS ARE NOTED THEREON. THE SEVERAL OWNERS, TRIMBLE DEVELOPMENT, INC., AND ANY OTHER PARTY WHOSE INTERESTS ARE NOTED THEREON, HEREBY WARRANT AND GUARANTEE THAT THE INFORMATION CONTAINED HEREON IS TRUE AND CORRECT AND THAT THE INFORMATION CONTAINED HEREON IS A TRUE AND CORRECT COPY OF THE INFORMATION CONTAINED IN THE ORIGINAL RECORDS OF THE SEVERAL OWNERS, TRIMBLE DEVELOPMENT, INC., AND ANY OTHER PARTY WHOSE INTERESTS ARE NOTED THEREON. THE SEVERAL OWNERS, TRIMBLE DEVELOPMENT, INC., AND ANY OTHER PARTY WHOSE INTERESTS ARE NOTED THEREON, HEREBY WARRANT AND GUARANTEE THAT THE INFORMATION CONTAINED HEREON IS A TRUE AND CORRECT COPY OF THE INFORMATION CONTAINED IN THE ORIGINAL RECORDS OF THE SEVERAL OWNERS, TRIMBLE DEVELOPMENT, INC., AND ANY OTHER PARTY WHOSE INTERESTS ARE NOTED THEREON.

1998-26678
07/14/1998-26678
01110 PM CERTIFIED
MAY 15 1998

19980714000266721 1/1 S 80
Shelby County Judge of Probate, RL
07/14/1998 01:10:28PM FILED/CERT

DATA: TRASH.PT # 1-7; SIZE: 51.35