



STATE OF ALABAMA  
SHELBY COUNTY

I, Frances Parrish, City Clerk of the City of Helena, do hereby certify that the above is a true correct copy of an ordinance duly adopted by the Council of the City of Helena at its meeting held July 15 1996, and as same appears of record in the ordinance records of said City, and approved by the Mayor on July 15, 1996.

Given under my hand and corporate seal of the City of Helena, this the 15 day of July, 1996.

Frances Parrish, CMC  
City Clerk

## CERTIFICATION

I, Frances Parrish, the duly appointed and acting Clerk of the City of Helena, Alabama, do hereby certify that the within Ordinance Number 503-96 is a true copy as recited in the said City Clerk's Minute Book and posted by me as provided by law in three public places in said City, being on the bulletin board of the City Hall, in the United States Post Office in the City of Helena, and in the Helena Public Library in said City, that said Ordinance shall become a duly lawful Ordinance of said City on the 23 day of July, 1996, five or more days after the posting of the same as provided by law.

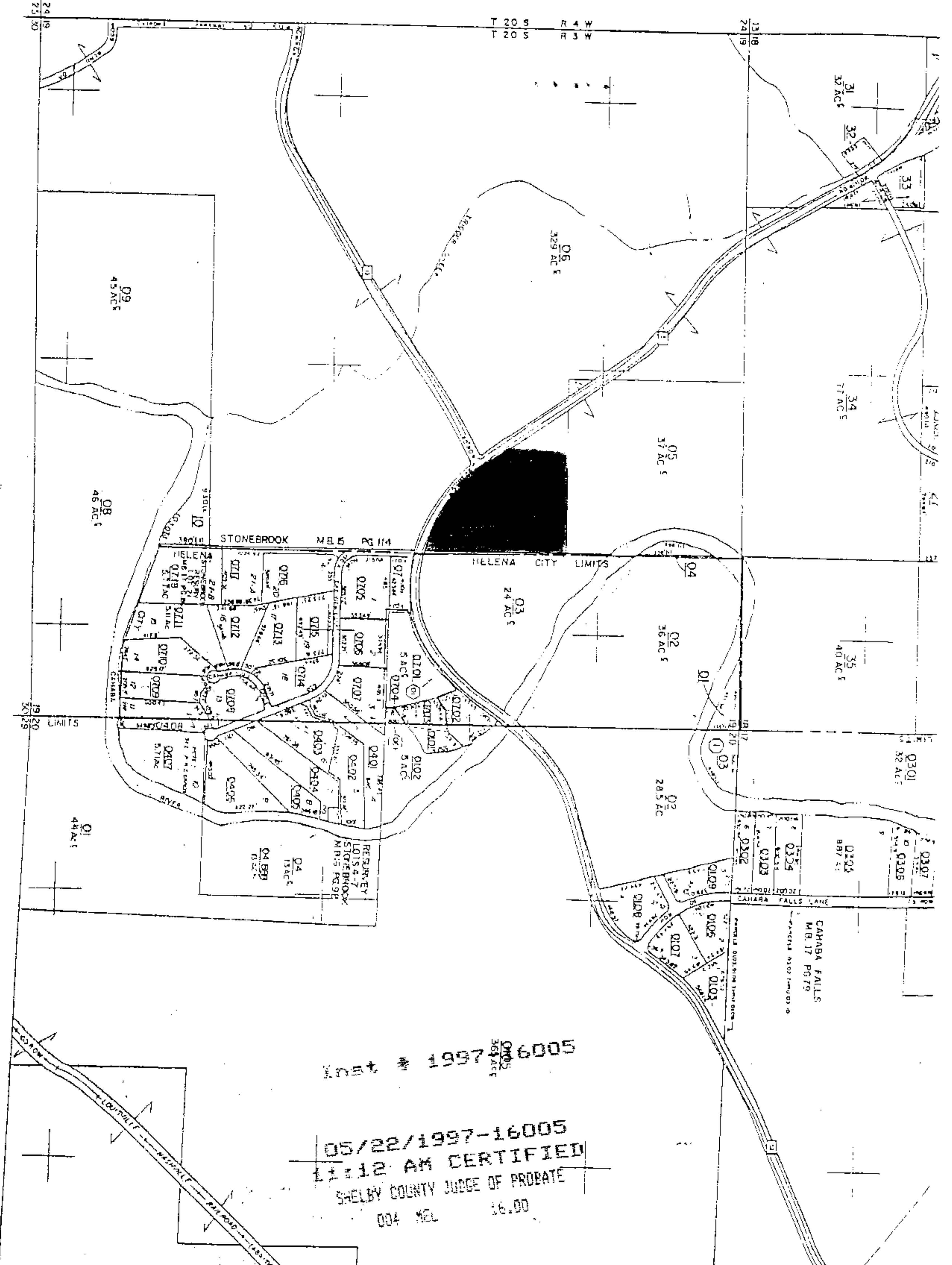
IN WITNESS WHEREOF, I have hereunto set my hand and seal on this the 15 day of July, 1996.

Frances Parrish, CMC  
City Clerk

MAPS TO BE USED FOR THE PURPOSES ONLY - NOT TO BE USED FOR CONVEYANCE

PROPOSED  
ANNEXATION

EXISTING HELENA  
CITY LIMITS



Met \* 1997-16005

05/22/1997-16005  
11:12 AM CERTIFIED  
SHELBY COUNTY JUDGE OF PROBATE  
004 MEL 16.00