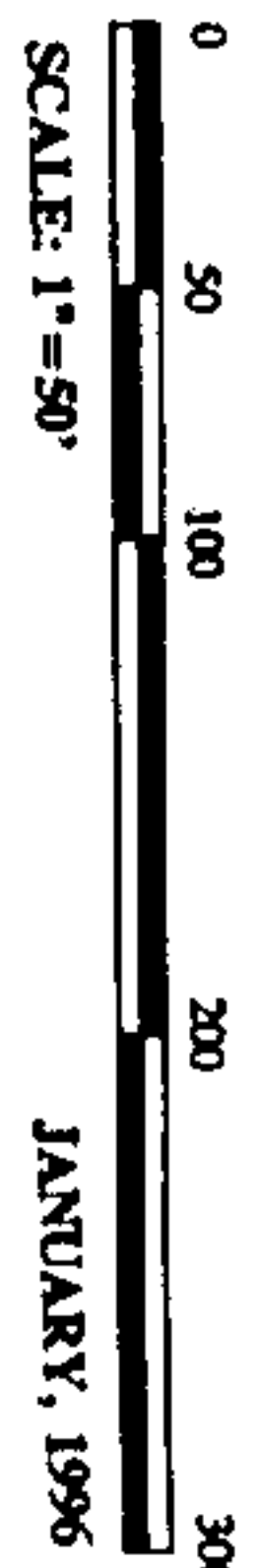


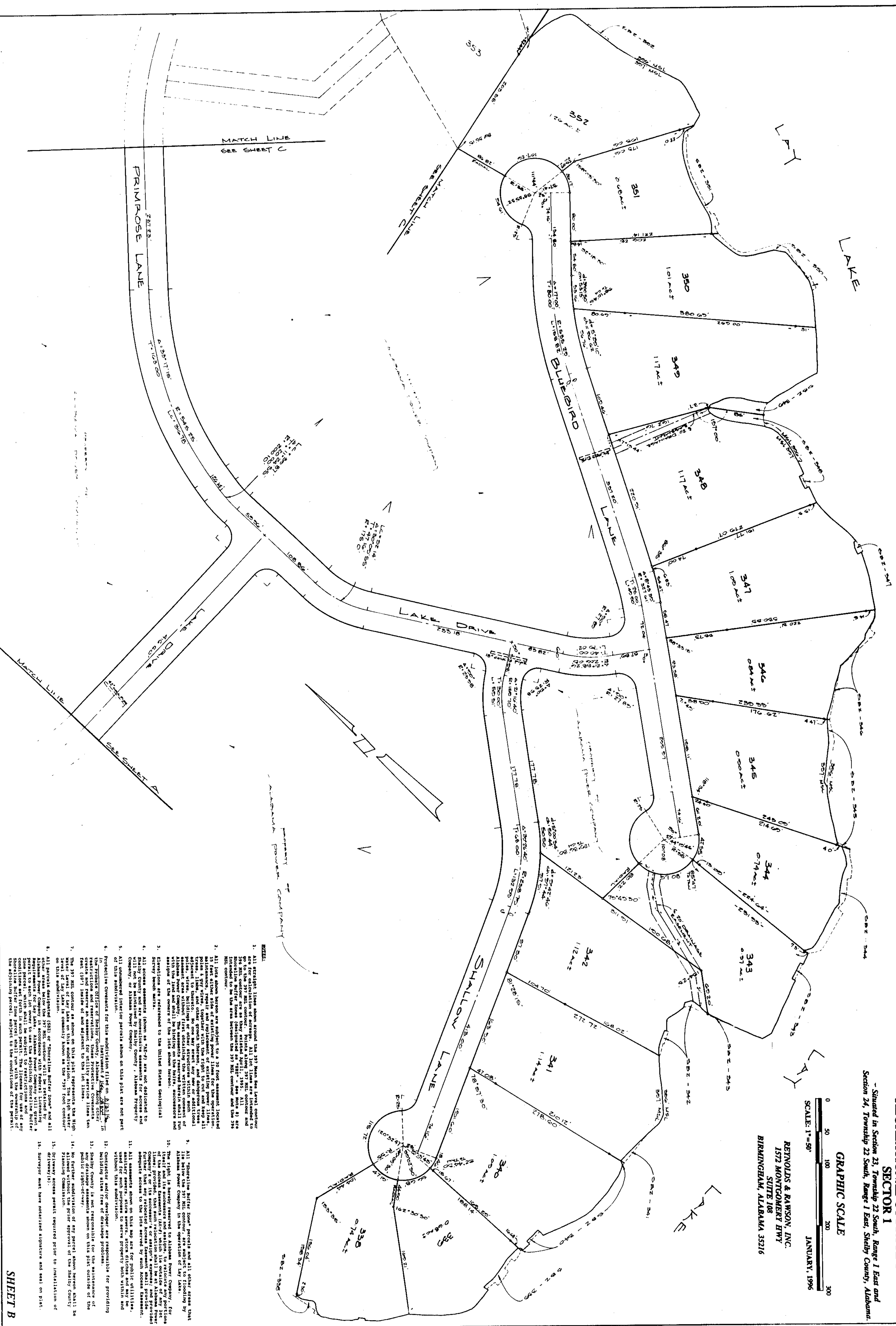
ALABAMA POWER COMPANY
RECREATIONAL COTTAGE SITE
SECTOR 1

- Situated in Section 23, Township 22 South, Range 1 East and
Section 24, Township 22 South, Range 1 East, Shelby County, Alabama.

GRAPHIC SCALE



REYNOLDS & RAYSON, INC.
1572 MONTGOMERY HWY
SUITE 108
BIRMINGHAM, ALABAMA 35216



- NOTES:
1. All right-of-way lines shown around the 397 foot mean sea level contour are for dedication of easement. All lot lines are intended to be as shown on this plat as they existed April 1, 1991. All lot lines are intended to be the area between the 397 foot contour and the 396 foot contour.
 2. All lots shown within the 397 foot contour are not intended to be dedicated to the Alabama Power Company. The lots shown within the 397 foot contour are not intended to be dedicated to the Alabama Power Company.
 3. Easements are referenced to the United States Geological Survey bench marks.
 4. All easements shown on this plat are not dedicated to the Alabama Power Company. The easements shown on this plat are not intended to be dedicated to the Alabama Power Company.
 5. All easements shown on this plat are not intended to be dedicated to the Alabama Power Company. The easements shown on this plat are not intended to be dedicated to the Alabama Power Company.
 6. Protective easements for this subdivision are shown on this plat.
 7. The 397 foot contour is shown on this plat as the 397 foot contour.
 8. All easements shown on this plat are not intended to be dedicated to the Alabama Power Company. The easements shown on this plat are not intended to be dedicated to the Alabama Power Company.
 9. All easements shown on this plat are not intended to be dedicated to the Alabama Power Company. The easements shown on this plat are not intended to be dedicated to the Alabama Power Company.
 10. The right-of-way is hereby dedicated to the Alabama Power Company, for the use and benefit of the Alabama Power Company.
 11. All easements shown on this plat are not intended to be dedicated to the Alabama Power Company. The easements shown on this plat are not intended to be dedicated to the Alabama Power Company.
 12. All easements shown on this plat are not intended to be dedicated to the Alabama Power Company. The easements shown on this plat are not intended to be dedicated to the Alabama Power Company.
 13. All easements shown on this plat are not intended to be dedicated to the Alabama Power Company. The easements shown on this plat are not intended to be dedicated to the Alabama Power Company.
 14. No further subdivision of any parcel shown herein shall be made without the approval of the Alabama Power Company.
 15. All easements shown on this plat are not intended to be dedicated to the Alabama Power Company. The easements shown on this plat are not intended to be dedicated to the Alabama Power Company.
 16. All easements shown on this plat are not intended to be dedicated to the Alabama Power Company. The easements shown on this plat are not intended to be dedicated to the Alabama Power Company.

RECREATIONAL COTTAGE SITE SECTOR 1

- Situated in Section 23, Township 22 South, Range 1 East and Section 24, Township 22 South, Range 1 East, Shelby County, Alabama



0 1 2 3 4 5

BUSINESS RECORDS COMPARISON