

**ORDINANCE NO. 279**

AN ORDINANCE TO ALTER, REARRANGE AND EXTEND THE CORPORATE LIMITS OF THE CITY OF PELHAM, ALABAMA SO AS TO EMBRACE AND INCLUDE WITHIN THE CORPORATE AREA OF SAID CITY ALL TERRITORY WITHIN SUCH CORPORATE LIMITS AND ALSO CERTAIN OTHER TERRITORY CONTIGUOUS TO SAID CITY.

WHEREAS, a certain petition signed by the property owners requesting territory therein described be annexed to the City of Pelham, together with a map of said territory showing its relationship to the corporate limits of the City has been filed with the City Clerk of the City of Pelham; and

WHEREAS, the Council has determined and found that the matters set forth and alleged in said petition are true, and that it is in the public interest that said property be annexed to the City of Pelham;

NOW, THEREFORE, BE IT ORDAINED by the Council of the City of Pelham as follows:

Section 1. That said Council hereby assents to the annexation of said territory to the City of Pelham, Alabama, the corporate limits of the City to be extended and rearranged pursuant to the provisions of Chapter 42, Article 2, Code of Alabama 1975 (Sections 11-42-20 through 11-42-43, as amended) so as to embrace and include said territory, in addition to the territory already within its present corporate limits, within the corporate area of said City, which said territory is not within the corporate limits or "City Boundary" of another municipality. Said territory is described as follows:

See Attached

Section 2. The City of Pelham hereby agrees to comply with those provisions of Act No. 604 enacted at the 1976 Regular Session of the Legislature of Alabama pertaining to the assumption and payment of an annexed fire district debt or the payment to said fire district of an amount equal to six times the amount of dues that the portion of said fire district being annexed paid to said fire district during the preceding year.

Section 3. That the City Clerk shall file a certified copy of this ordinance containing an accurate description of said annexed territory with the Probate Judge of Shelby County, Alabama, and also cause a copy of this ordinance to be published in a newspaper of general circulation in the City of Pelham.

12/06/1995-34949  
02:12 PM CERTIFIED  
SHELBY COUNTY JUDGE OF PROBATE  
008 SNA 26.00

Jim Phillips, a member of the City Council of the City of Pelham, moved that all rules which would prevent the immediate consideration of Ordinance No. 279, hereupon attached, be suspended and immediate consideration given to the passage of said Ordinance. Said motion was seconded by Karyl Rice, a member, and upon a roll call vote was unanimously passed. The vote on said motion was as follows:

Bobby Hayes  
Mayor

Yes

Willard Payne  
Council Member

Yes

Connie LaBue  
Council Member

Yes

Ken Maynard  
Council Member

Absent

Karyl Rice  
Council Member

Yes

Jim Phillips  
Council Member

Yes

THEREUPON Jim Phillips, a member moved and Connie LaBue, a member seconded the move that said Ordinance be given vote. Said Ordinance passed by vote of all members of the Council present and the Mayor declared the same passed.

ADOPTED this the 4 day of Dec 1995.

Bobby Hayes  
Mayor

\_\_\_\_\_  
Council Member

Connie LaBue  
Council Member

Willard C. Payne  
Council Member

Jim Phillips  
Council Member

Karyl Rice  
Council Member

Seal

ATTEST

Cezayir Batur  
City Clerk

Randall Goggans  
1 Riverchase Office Plaza  
Hoover, AL 35244

December 1, 1995

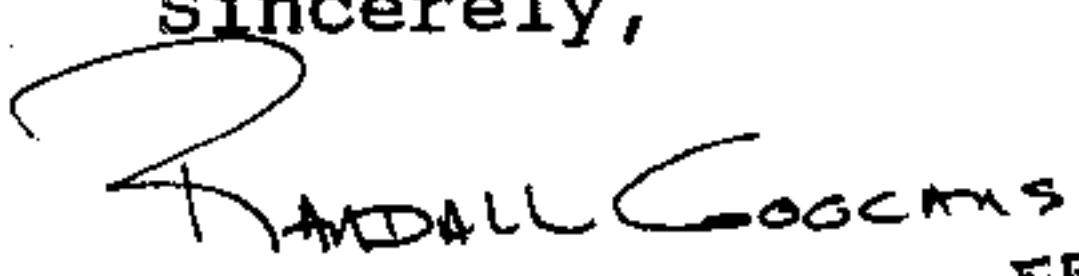
City of Pelham  
Mayor Bobby Hayes  
City Council Members  
P. O. Box 1419  
Pelham, AL 35124

**RE: ANNEXATION REQUEST**

To The Honorable Mayor of Pelham and City Council Members:

I, Randall Goggans, hereby request annexation of my property, Sector One and Sector Two of the proposed Oak Crest Subdivision, into the City of Pelham. Said property is shown on the attached vicinity map and is contained in the attached legal descriptions. The property under proposal for annexation is situated in the S 1/2 of the NW 1/4 of Section 16, and in the S 1/2 of the NE 1/4, the SE 1/4 of the NW 1/4, and the NE 1/4 of the SW 1/4 of Section 17, Township 20 South, Range 2 West. Oak Mountain State Park, which is inside the corporate limits of the City of Pelham, is adjacent to said property.

Sincerely,

  
Randall Goggans *FGH*

jj

**Enclosures:**

Vicinity Map  
Legal Descriptions

**PROPOSED SECTOR 1:**

A parcel of land situated in the SE 1/4 of the NW 1/4 and in the SW 1/4 of the NW 1/4 of Section 16, Township 20 South, Range 2 West in Shelby County, Alabama, and being more particularly described as follows:

**BEGIN** at the NE Corner of the SE 1/4 of the NW 1/4 of Section 16, Township 20 South, Range 2 West, said point being the **POINT OF BEGINNING**; thence N 89deg-45'-00" W along the northerly boundary of said 1/4-1/4 section a distance of 1285.05' to the NE Corner of the SW 1/4 of the NW 1/4 of said section; thence N 89deg-11'-23" W along the northerly boundary of said 1/4-1/4 section a distance of 710.74'; thence S 40deg-38'-44" W a distance of 407.38'; thence S 26deg-41'-54" W a distance of 293.09'; thence S 45deg-42'-58" E a distance of 254.17'; thence S 16deg-50'-41" E a distance of 60.04'; thence S 0deg-53'-36" W a distance of 497.75' to the southerly boundary of the SW 1/4 of the NW 1/4 of said section; thence S 89deg-06'-24" E along the southerly boundary of said 1/4-1/4 section a distance of 934.60' to the SE Corner of said 1/4-1/4 section; thence N 0deg-48'-17" W along said easterly boundary of said 1/4-1/4 section a distance of 194.27'; thence S 85deg-40'-17" E a distance of 942.76' to a point on the northwesterly right-of-way line of Shelby County Highway No. 11 (80' R.O.W.); thence N 60deg-20'-40" E along said right-of-way line a distance of 80.95'; thence N 38deg-02'-33" W and leaving said right-of-way line a distance of 168.93'; thence N 25deg-42'-36" W a distance of 144.64'; thence N 0deg-52'-08" W a distance of 536.86'; thence N 89deg-14'-05" E a distance of 438.37' to a point on the easterly boundary of the SE 1/4 of the NW 1/4 of said section; thence N 0deg-45'-02" W along said easterly boundary a distance of 333.36' to the **Point of Beginning**. Said parcel contains 54.5 acres, more or less.



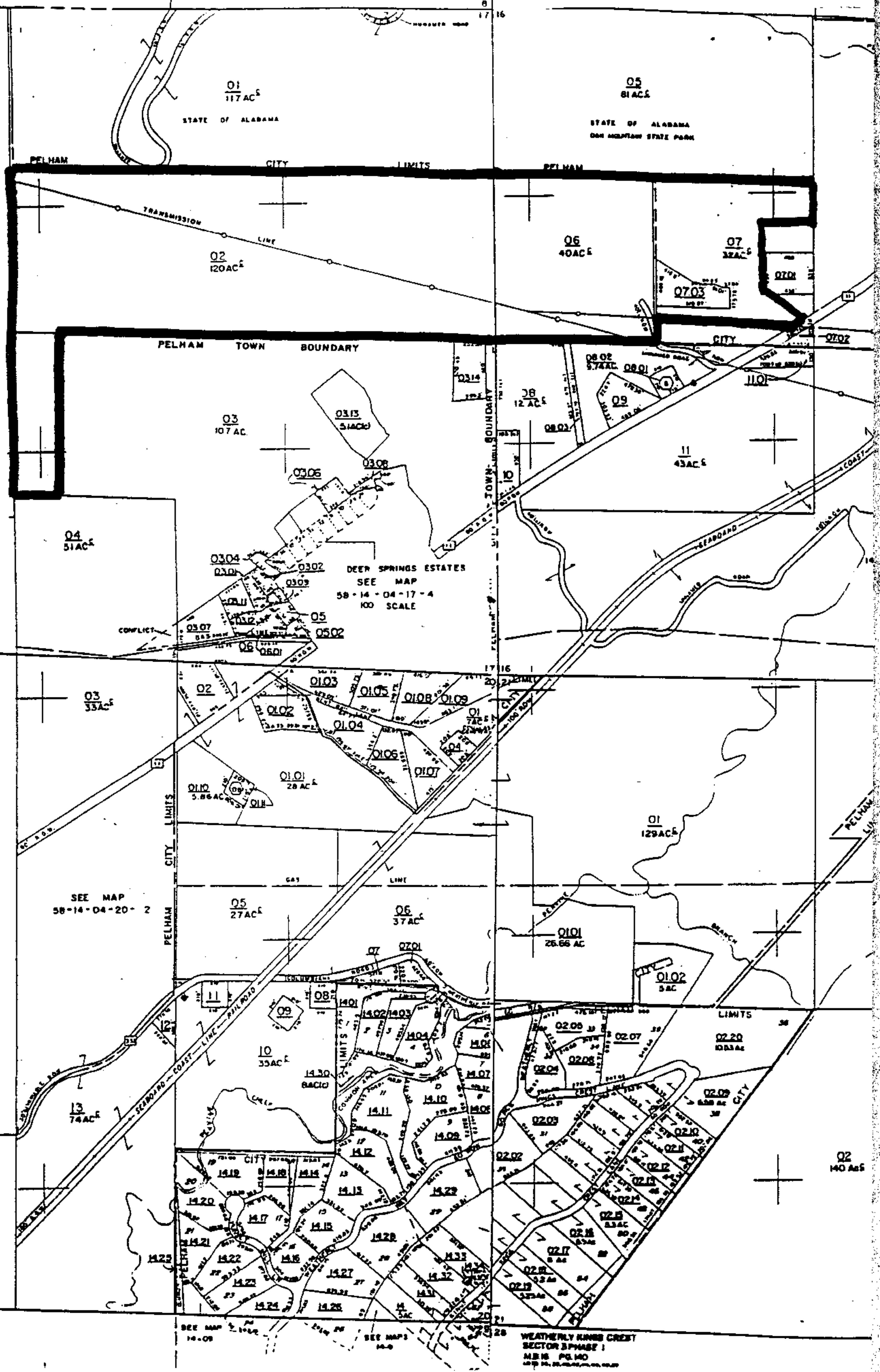
**PROPOSED SECTOR 2:**

A parcel of land situated in the S 1/2 of the NE 1/4, the SE 1/4 of the NW 1/4, and the NE 1/4 of the SW 1/4 of Section 17, Township 20 South, Range 2 West in Shelby County, Alabama, and being more particularly described as follows:

COMMENCE at the N.W. Corner of the S.E. 1/4 of the N.W. 1/4 of Section 17, Township 20 South, Range 2 West; THENCE South 0 degrees 28 minutes 17 seconds West, a distance of 758.12 feet to the **POINT OF BEGINNING**; THENCE South 0 degrees 28 minutes 17 seconds West, a distance of 543.83 feet to a point; THENCE South 0 degrees 06 minutes 24 seconds East, a distance of 1316.82 feet to a point; THENCE South 87 degrees 18 minutes 37 seconds East, a distance of 375.33 feet to a point; THENCE North 0 degrees 05 minutes 24 seconds West, a distance of 1316.12 feet to a point; THENCE South 87 degrees 12 minutes 22 seconds East, a distance of 945.41 feet to a point; THENCE South 87 degrees 12 minutes 22 seconds East, a distance of 1321.16 feet to a point; THENCE South 87 degrees 12 minutes 22 seconds East, a distance of 1321.16 feet to a point; THENCE South 89 degrees 06 minutes 24 seconds East, a distance of 436.08 feet to a point; THENCE North 0 degrees 53 minutes 36 seconds East, a distance of 497.75 feet to a point; THENCE North 16 degrees 50 minutes 41 seconds West, a distance of 60.04 feet to a point; THENCE North 45 degrees 42 minutes 58 seconds West, a distance of 254.17 feet to a point; THENCE North 26 degrees 41 minutes 54 seconds East, a distance of 293.09 feet to a point; THENCE North 40 degrees 38 minutes 44 seconds East, a distance of 407.38 feet to a point; THENCE North 89 degrees 11 minutes 23 seconds West, a distance of 643.18 feet to a point; THENCE North 87 degrees 15 minutes 17 seconds West, a distance of 767.01 feet to a point; THENCE South 2 degrees 44 minutes 43 seconds West, a distance of 188.26 feet to a point; THENCE around a curve in a counterclockwise direction having a delta angle of 48 degrees 18 minutes 22 seconds, an arc distance of 168.62 feet, a radius of 200.00 feet, and a chord of South 71 degrees 10 minutes 44 seconds West, a distance of 163.67 feet to a point; THENCE South 47 degrees 01 minutes 33 seconds West, a distance of 194.99 feet to a point; THENCE around a curve in a clockwise direction having a delta angle of 99 degrees 39 minutes 57 seconds, an arc distance of 156.55 feet, a radius of 90.00 feet, and a chord of North 83 degrees 08 minutes 28 seconds West, a distance of 137.55 feet to a point; THENCE North 33 degrees 18 minutes 30 seconds West, a distance of 169.56 feet to a point; THENCE around a curve in a counterclockwise direction having a delta angle of 37 degrees 17 minutes 37 seconds, an arc distance of 214.80 feet, a radius of 330.00 feet, and a chord of North 51 degrees 57 minutes 18 seconds West, a distance of 211.02 feet to a point; THENCE North 70 degrees 36 minutes 06 seconds West, a distance of 105.91 feet to a point; THENCE around a curve in a counterclockwise direction having a delta angle of 18 degrees 41 minutes 50 seconds, an arc distance of 107.69 feet, a radius of 330.00 feet, and a chord of North 79 degrees 57 minutes 01 seconds West, a distance of 107.21 feet to a point; THENCE North 89 degrees 17 minutes 56 seconds West, a distance of 156.45 feet to a point; THENCE around a curve in a counterclockwise direction having a delta angle of 60 degrees 27 minutes 53 seconds, an arc distance of 295.49 feet, a radius of 280.00 feet, and a chord of South 60 degrees 28 minutes 07 seconds West, a distance of 281.96 feet to a point; THENCE around a curve in a clockwise direction having a delta angle of 36 degrees 11 minutes 30 seconds, an arc distance of 233.72 feet, a radius of 370.00 feet, and a chord of South 48 degrees 19 minutes 56 seconds West, a distance of 229.85 feet to a point; THENCE around a curve in a counterclockwise direction having a delta angle of 47 degrees 43 minutes 55 seconds, an arc distance of 299.91 feet, a radius of 360.00 feet, and a chord of South 42 degrees 33 minutes 44 seconds West, a distance of 291.31 feet to a point; THENCE around a curve in a clockwise direction having a delta angle of 116 degrees 25 minutes 00 seconds, an arc distance of 193.03 feet, a radius of 95.00 feet, and a chord of South 76 degrees 54 minutes 17 seconds West, a distance of 161.49 feet to a point; THENCE North 44 degrees 53 minutes 13 seconds West, a distance of

112.71 feet to a point; THENCE around a curve in a counterclockwise direction having a delta angle of 92 degrees 56 minutes 47 seconds, an arc distance of 316.33 feet, a radius of 195.00 feet, and a chord of South 88 degrees 38 minutes 23 seconds West, a distance of 282.77 feet to a point; THENCE South 42 degrees 10 minutes 00 seconds West, a distance of 35.70 feet to a point; THENCE around a curve in a counterclockwise direction having a delta angle of 30 degrees 24 minutes 58 seconds, an arc distance of 95.55 feet, a radius of 180.00 feet, and a chord of South 26 degrees 57 minutes 31 seconds West, a distance of 94.44 feet to a point; THENCE South 11 degrees 45 minutes 02 seconds West, a distance of 83.25 feet to a point; THENCE around a curve in a clockwise direction having a delta angle of 91 degrees 19 minutes 51 seconds, an arc distance of 231.13 feet, a radius of 145.00 feet, and a chord of South 57 degrees 24 minutes 58 seconds West, a distance of 207.43 feet to a point; THENCE North 76 degrees 55 minutes 07 seconds West, a distance of 49.41 feet to a point; THENCE around a curve in a clockwise direction having a delta angle of 42 degrees 50 minutes 00 seconds, an arc distance of 18.69 feet, a radius of 25.00 feet, and a chord of North 55 degrees 30 minutes 07 seconds West, a distance of 18.26 feet to a point; THENCE around a curve in a counterclockwise direction having a delta angle of 127 degrees 49 minutes 25 seconds, an arc distance of 111.55 feet, a radius of 50.00 feet, and a chord of South 82 degrees 00 minutes 11 seconds West, a distance of 89.81 feet to a point; THENCE North 71 degrees 54 minutes 32 seconds West, a distance of 607.99 feet to the POINT OF BEGINNING. Said parcel contains 106.60 acres, more or less.





SEE MAP  
58-14-04-17-2

SEE MAP  
58-14-04-17-3

SEE MAP  
58-14-04-20-2

SEE MAP  
58-14-04-20-3

SEE MAP  
14-09

SEE MAP  
14-0

WEATHERLY KING CREST  
SECTOR 3 PHASE 1  
M.B. P. 140  
14-09, 14-10, 14-11, 14-12, 14-13, 14-14, 14-15, 14-16, 14-17, 14-18, 14-19, 14-20, 14-21, 14-22, 14-23, 14-24, 14-25, 14-26, 14-27, 14-28, 14-29, 14-30, 14-31, 14-32, 14-33, 14-34, 14-35, 14-36, 14-37, 14-38, 14-39, 14-40, 14-41, 14-42, 14-43, 14-44, 14-45, 14-46, 14-47, 14-48, 14-49, 14-50, 14-51, 14-52, 14-53, 14-54, 14-55, 14-56, 14-57, 14-58, 14-59, 14-60, 14-61, 14-62, 14-63, 14-64, 14-65, 14-66, 14-67, 14-68, 14-69, 14-70, 14-71, 14-72, 14-73, 14-74, 14-75, 14-76, 14-77, 14-78, 14-79, 14-80, 14-81, 14-82, 14-83, 14-84, 14-85, 14-86, 14-87, 14-88, 14-89, 14-90, 14-91, 14-92, 14-93, 14-94, 14-95, 14-96, 14-97, 14-98, 14-99, 14-100

