

ORDINANCE NO. 94-1310

An ordinance to alter, rearrange and extend the corporate limits of the City of Hoover, Alabama, so as to embrace and include within the corporate limits of said City all territory now within such corporate limits and also certain other territory contiguous to said City.

WHEREAS, a petition signed by Terry L. and Deborah M. Fick requesting that certain territory described therein be annexed to the City of Hoover, and

WHEREAS, there is attached to the said petition a map of said territory showing its relationship to the corporate limits of the City; and


WHEREAS, this Council has determined and found that the matters set forth and alleged in the said petition are true and that it is in the public interest that said property be annexed into the City of Hoover;

NOW, THEREFORE, be it ordained by the Council of the City of Hoover as follows:

SECTION 1: That said Council hereby assents to the annexation of said territory to the City of Hoover, Alabama, and the corporate limits of the City of Hoover are hereby extended and rearranged pursuant to the provisions of Chapter 42, Article 2, Code of Alabama, 1975 (Sections 11-42-20 through 11-42-23, as amended) so as to embrace and include said territory, in addition to the territory already within its present corporate limits, within the corporate area of said City, which said territory is not within the corporate limits or municipal boundaries of another municipality and does not lie at any point more than one-half the distance between the present corporate limits or municipal boundaries of another municipality and does not lie at any point more than one-half the distance between the present corporate limits and the corporate limits of any other municipality. Said property is described in Exhibit "A" attached hereto and made a part hereof.

SECTION 2: The City Clerk shall file a certified copy of this ordinance containing an accurate description of said annexed territory with the Probate Judge of Shelby County, Alabama, and also cause a copy of this ordinance to be published in a newspaper of general circulation in the City of Hoover.

ADOPTED this the 3rd day of Jan., 1995.


President of the Council

APPROVED BY:


Mayor

ATTESTED BY:


City Clerk

Inst # 1995-02207


01/26/1995-02207
01:02 PM CERTIFIED
SHELBY COUNTY JUDGE OF PROBATE
006 MCD 21.00

EXHIBIT "A"

Lots 2 and 3 of R. B. Jones Subdivision as recorded in Map Book 4, Page 69 in the office of the Judge of Probate, Shelby County, Alabama.

CERTIFICATION

I, Linda Crump, City Clerk for the City of Hoover, Alabama, hereby certify that the attached is a true and correct copy of Ordinance No. 94-1310 which was passed and adopted by the City Council of the City of Hoover on the 3rd day of January, 1995, and that it has been published in a newspaper of general circulation and is now in full force and effect.


Linda Crump, CMC
City Clerk

STATE OF ALABAMA

SHELBY COUNTY

We, the undersigned, hereby request and petition the City of Hoover to take whatever action is necessary to cause our property to be annexed into the corporate limits of the City of Hoover.

NAME
(SIGNATURE OF OWNER(S))

ADDRESS

① { Deborah M. Fick
Terry L. Fick

421 South Shades Crest Rd


LEGAL DESCRIPTION:

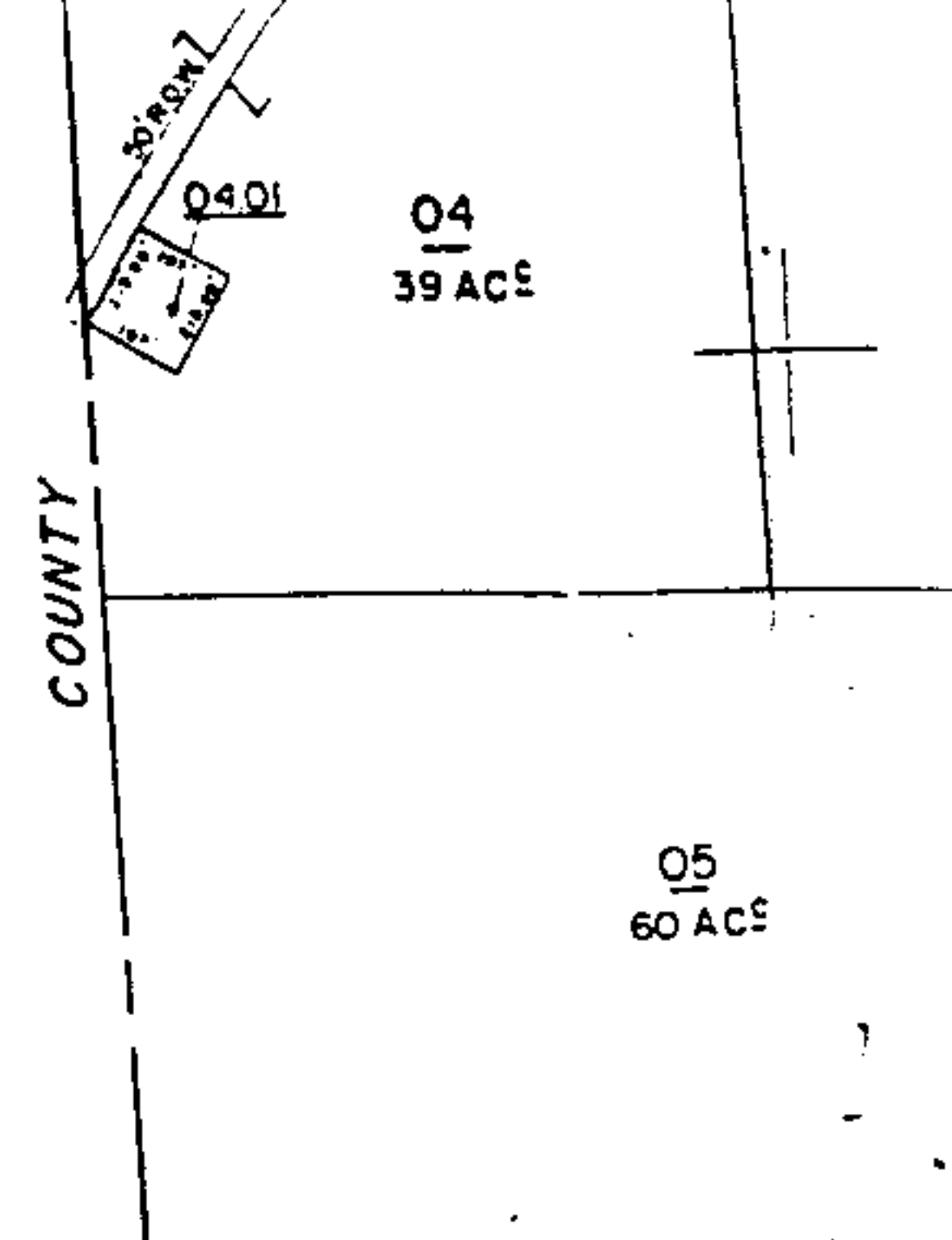
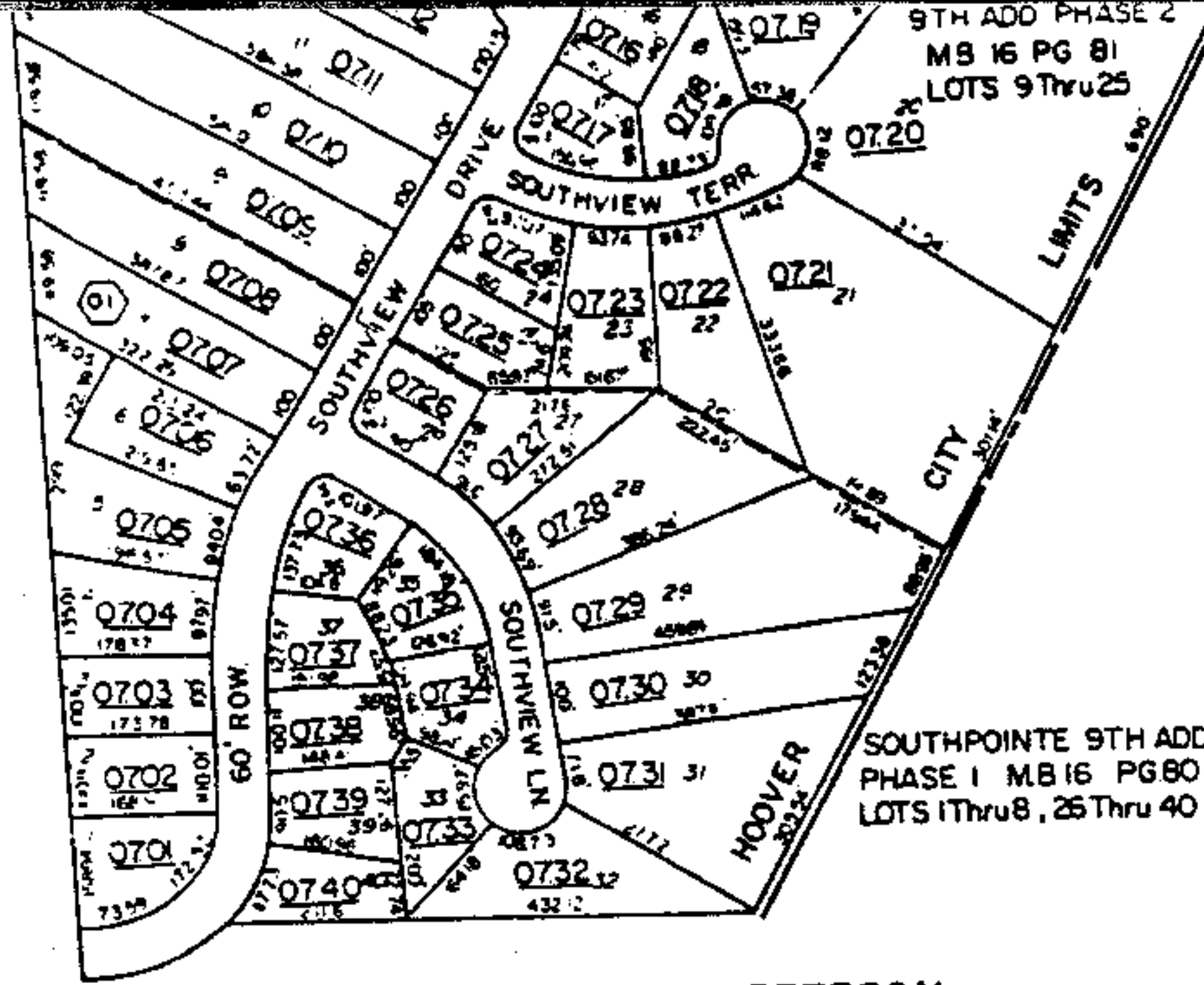
① Lots 2 & 3 R.B. Jones Subdivision
NE 1/4 of NW 1/4 Sec. 7, Twp 20 South, Range 3 West
Map Book 4 pg 69

58-13-3-07-0-000-006.000

CERTIFICATION

I, Linda H. Crump, do hereby certify the attached is a true and correct copy of a petition(s) presented to the City Council of the City of Hoover by persons whose name(s) appear thereon, requesting that their property be annexed to the City of Hoover.


Linda Crump, CMC
City Clerk



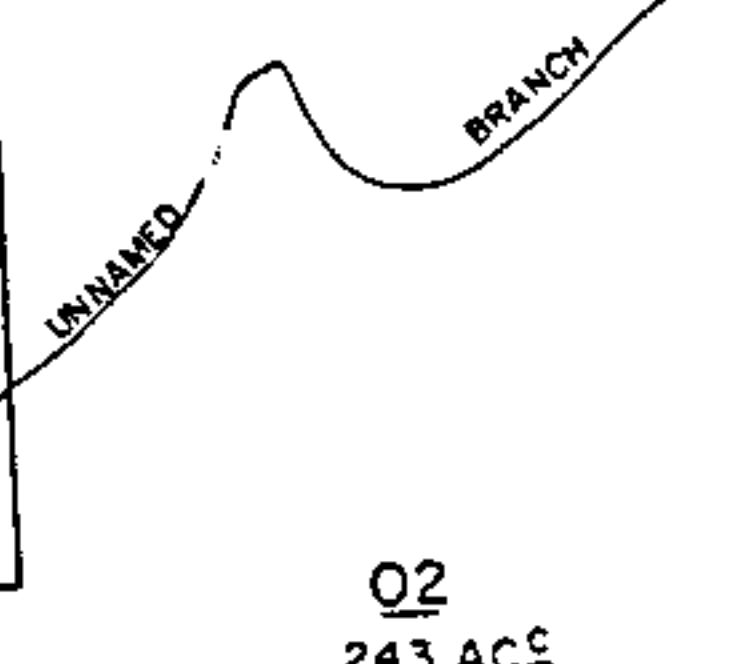
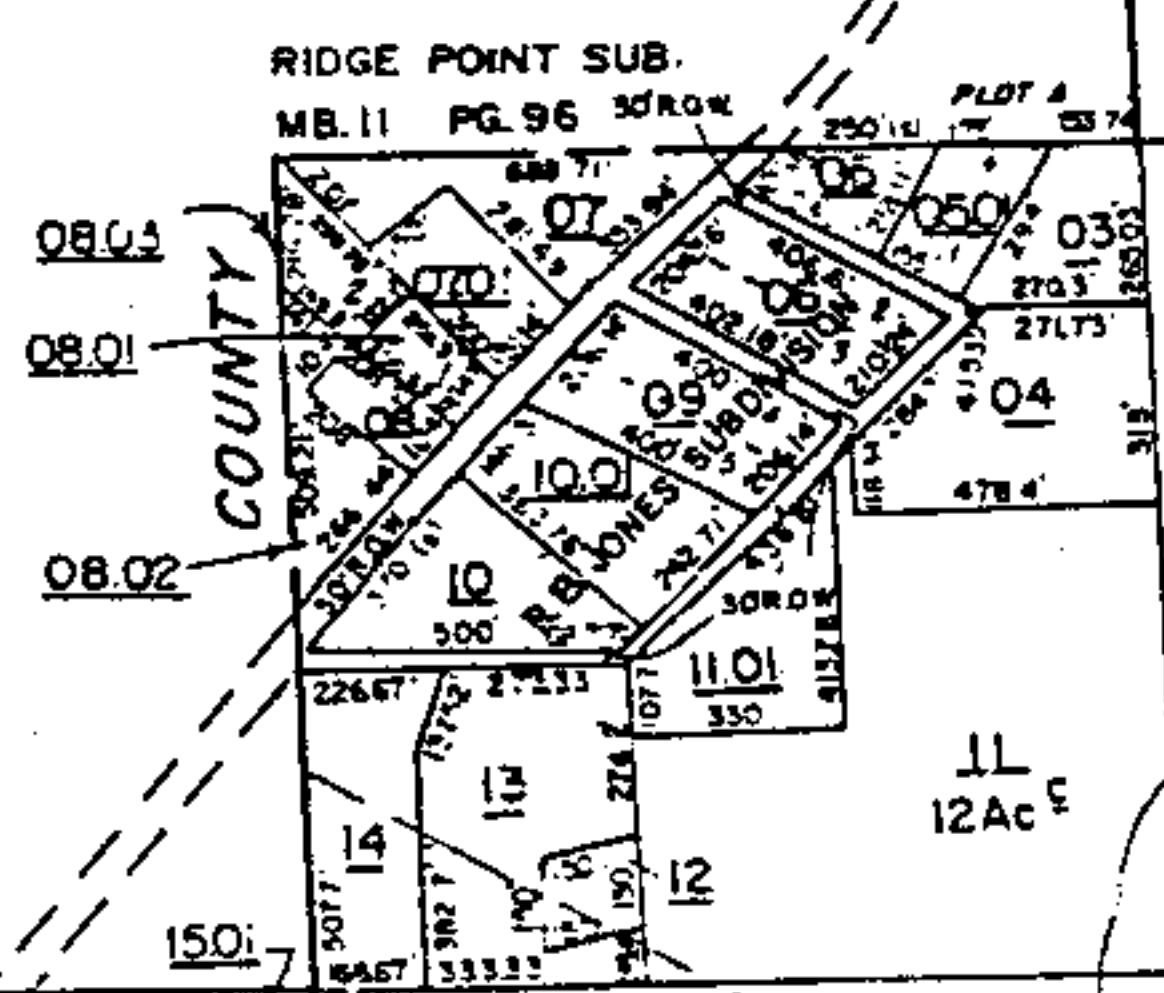
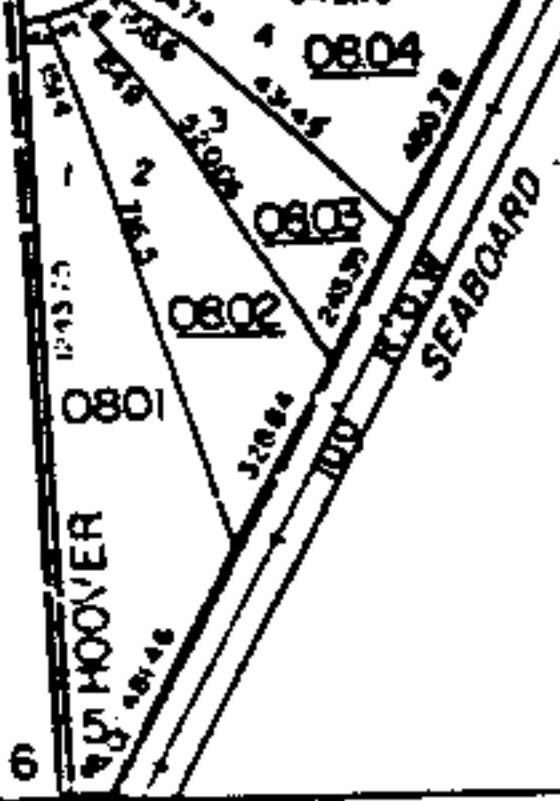
JEFFERSON

JEFFERSON COUNTY
SHELBY COUNTY

SEE MAP 8 13-3-06

SOUTHPOINTE 9TH SECTOR
PHASE I
SEE "DETAIL A" f=100'

SOUTHPOINTE
9TH SECTOR 1ST ADD.
MB 17 PG 4



Inst # 1995-02207
01
154 AC

01/26/1995-02207
01:02 PM CERTIFIED
SHELBY COUNTY JUDGE OF PROBATE
006 MCD 21.00