

Councilman Jeff Kendall introduced the following Ordinance:

ORDINANCE 92-297

WHEREAS, on the 6 day of February, 1992, WINDY OAKS PARTNERSHIP filed a petition with the City Clerk of the City of Alabaster as required by Section 11-42-20 and 11-42-21, Code of Alabama 1975, petitioning and requesting that the property hereinafter described be annexed to the municipality of the City of Alabaster, Alabama, and requesting the Mayor and Council of said City to adopt an ordinance assenting to the annexation of said property to such municipality, which petition contained an accurate description of the property or territory proposed to be annexed together with a map of the said territory showing its relationship to the corporate limits of the City of Alabaster, and the signatures of the owners of the property or territory described were signed thereto;

NOW, THEREFORE, BE IT ORDAINED BY THE MAYOR AND COUNCIL OF THE CITY OF ALABASTER, ALABAMA, AS FOLLOWS:

That the City of Alabaster does adopt this ordinance assenting to the annexation of the following described property or territory to the municipality of the City of Alabaster. Said property being described as follows:

A parcel of land situated in the NE $\frac{1}{4}$ of the NE $\frac{1}{4}$ of Section 15, Township 22 South, Range 3 West, described as follows:
Commence at the SW corner of the NE $\frac{1}{4}$ of the NE $\frac{1}{4}$ of Section 15 and go North 00 deg. 51 min. 49 sec. East along the West boundary of said $\frac{1}{4}$ - $\frac{1}{4}$ Section for 18.00 feet to the Point of

Inst. # 1993-28147

09/14/1993-28147
02:45 PM CERTIFIED
SHELBY COUNTY JUDGE OF PROBATE
005 KJS 18.50

Beginning; thence South 86 deg. 08 min. 58 sec. East for 535.21 feet; thence North 09 deg. 29 min. 27 sec. East for 88.86 feet; thence North 09 deg. 22 min. 18 sec. East for 277.93 feet; thence North 40 deg. 25 min. 45 sec. East for 46.67 feet; thence North 55 deg. 00 min. 05 sec. East for 50.28 feet; thence North 28 deg. 52 min. 13 sec. East for 50.69 feet; thence North 19 deg. 11 min. 05 sec. East for 60.81 feet; thence North 09 deg. 53 min. 40 sec. East for 188.70 feet; thence South 89 deg. 08 min. 09 sec. East for 143.80 feet; thence South 79 deg. 40 min. 57 sec. East for 142.94 feet; thence South 77 deg. 43 min. 23 sec. East for 302.31 feet; thence South 88 deg. 28 min. 50 sec. East for 13.25 feet to the East boundary of the NE $\frac{1}{4}$ of the NE $\frac{1}{4}$ of Section 15; thence North 00 deg. 36 min. 08 sec. East along the East boundary of said $\frac{1}{4}$ - $\frac{1}{4}$ Section for 660.16 feet to the NE corner of the NE $\frac{1}{4}$ of the NE $\frac{1}{4}$ of Section 15; thence North 87 deg. 37 min. 12 sec. West along the North boundary of said $\frac{1}{4}$ - $\frac{1}{4}$ Section for 1323.74 feet to the NW corner of the NE $\frac{1}{4}$ of the NE $\frac{1}{4}$ of Section 15; thence South 00 deg. 51 min. 49 sec. West along the West boundary of said $\frac{1}{4}$ - $\frac{1}{4}$ Section and the Alabaster City Limits for 1300.85 feet to the Point of Beginning, containing 26.80 acres, more or less. Highway right-of-way not included.

Be it further ordained that the corporate limits of the City of Alabaster be extended and rearranged so as to embrace and include such property and such property or territory shall become a part of the corporate area of such municipality upon the date of publication of this Ordinance, as provided for in Section 11-42-20 and 11-42-21, Code of Alabama 1975.

Be it further ordained that the City Clerk be and she is hereby authorized and directed to file a copy of this ordinance, along with an accurate description of the property or territory being annexed, together with a map of the said territory showing its relationship to the corporate limits of the City of Alabaster to which said territory is being annexed in the office of the Judge of Probate of Shelby County, Alabama.

Be it further Ordained that the Zoning Map of the City of Alabaster, and any other official maps or surveys of the City, shall be amended to reflect the annexation of the above-described property, and that a copy of this ordinance be transmitted to the City Planning Commission and the Zoning Administrator.

Be it further Ordained that this property is temporarily zoned MR.

Be it further Ordained that this property is part of election Ward 7.

This Ordinance was adopted and passed by the Mayor and Council of the City of Alabaster on this the 19 day of March, 1992.

CITY OF ALABASTER, ALABAMA

Attest:

Catherine E. Sarni
Clerk

By Roger A. Wheeler
Mayor

OWNERSHIP MAP

OF THE
ENLIGHTENED LEAD IN THE EMERGENCY

STATE OF ALABAMA

DEPARTMENT OF REVENUE

AD VALOREM TAX DIVISION

TRIPALCO, INC.

EDC - AERO TOPO, INC.

BURLINGAME, CALIFORNIA

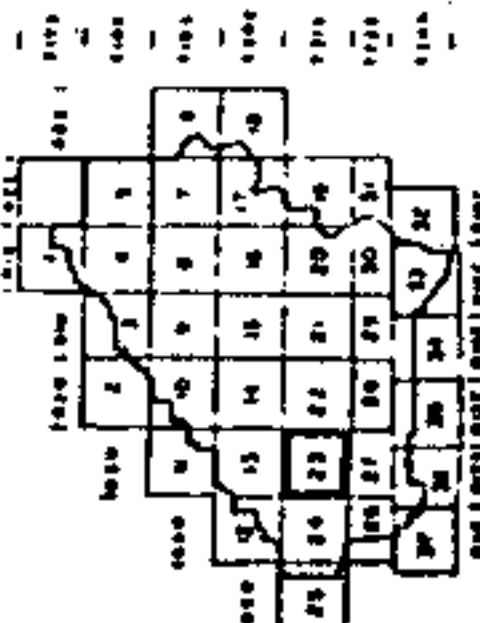


DATE OF MAP: FEB. 4, 1979 DATE OF PHOTOGRAPHY: MARCH, 1974



© Alabama Map & Data Service

COUNTY LOCATOR

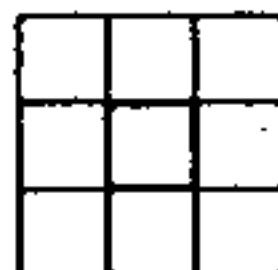


TOWNSHIP LOCATOR

CONCLUSIONS

1	2	3	4	5	6	7	8	9	10	11	12
13	14	15	16	17	18	19	20	21	22	23	24
25	26	27	28	29	30	31	32	33	34	35	36

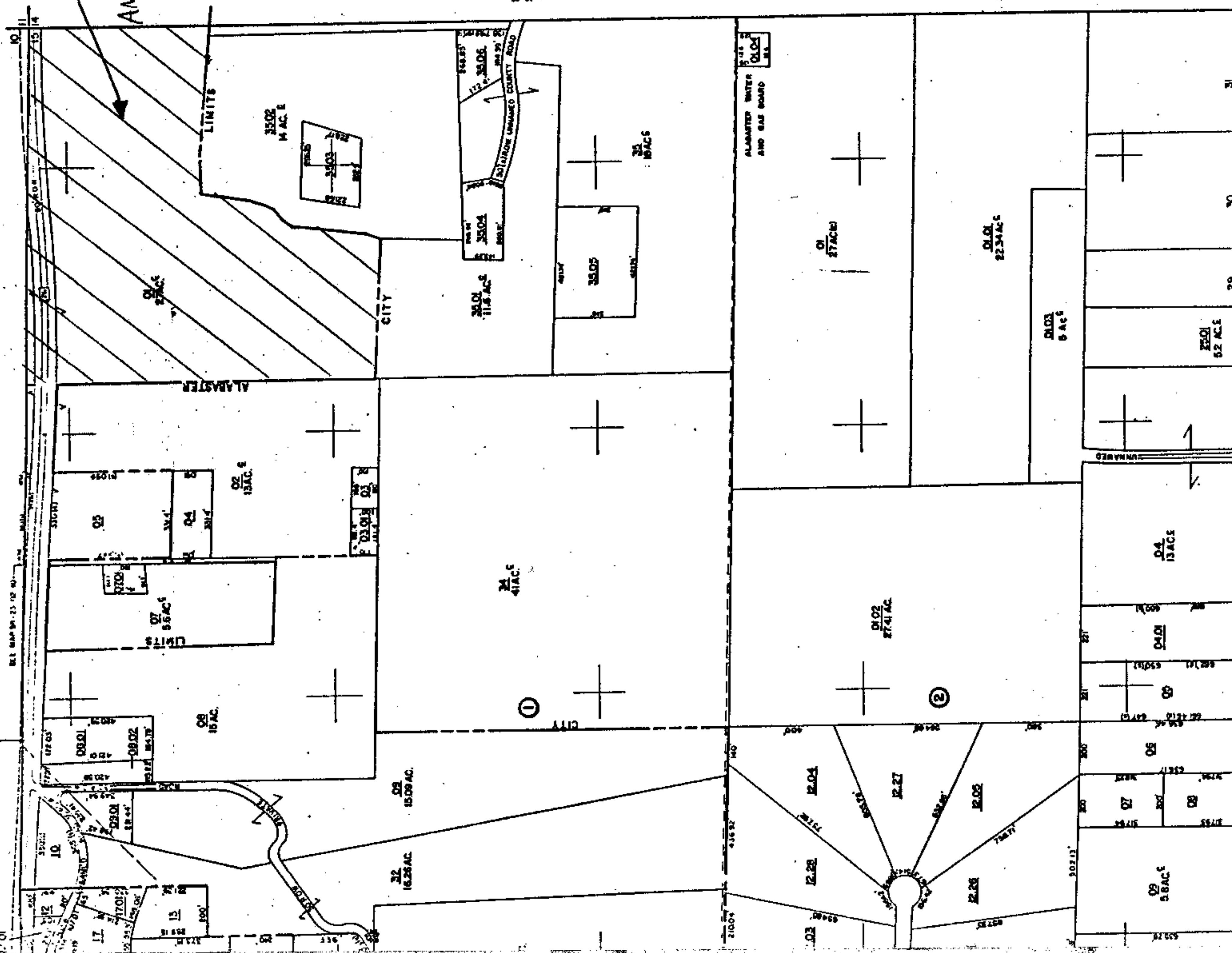
XEROX LEADS-SUB-SHEET INDEX



LEGEND

10.5 A	10.5 B	10.5 C	10.5 D	10.5 E	10.5 F	10.5 G	10.5 H	10.5 I	10.5 J	10.5 K	10.5 L	10.5 M	10.5 N	10.5 O	10.5 P	10.5 Q	10.5 R	10.5 S	10.5 T	10.5 U	10.5 V	10.5 W	10.5 X	10.5 Y	10.5 Z	10.5 AA	10.5 AB	10.5 AC	10.5 AD	10.5 AE	10.5 AF	10.5 AG	10.5 AH	10.5 AI	10.5 AJ	10.5 AK	10.5 AL	10.5 AM	10.5 AN	10.5 AO	10.5 AP	10.5 AQ	10.5 AR	10.5 AS	10.5 AT	10.5 AU	10.5 AV	10.5 AW	10.5 AX	10.5 AY	10.5 AZ	10.5 BA	10.5 BB	10.5 BC	10.5 BD	10.5 BE	10.5 BF	10.5 BG	10.5 BH	10.5 BI	10.5 BJ	10.5 BK	10.5 BL	10.5 BM	10.5 BN	10.5 BO	10.5 BP	10.5 BQ	10.5 BR	10.5 BS	10.5 BT	10.5 BU	10.5 BV	10.5 BW	10.5 BX	10.5 BY	10.5 BZ	10.5 CA	10.5 CB	10.5 CC	10.5 CD	10.5 CE	10.5 CF	10.5 CG	10.5 CH	10.5 CI	10.5 CJ	10.5 CK	10.5 CL	10.5 CM	10.5 CN	10.5 CO	10.5 CP	10.5 CQ	10.5 CR	10.5 CS	10.5 CT	10.5 CU	10.5 CV	10.5 CW	10.5 CX	10.5 CY	10.5 CZ	10.5 DA	10.5 DB	10.5 DC	10.5 DD	10.5 DE	10.5 DF	10.5 DG	10.5 DH	10.5 DI	10.5 DJ	10.5 DK	10.5 DL	10.5 DM	10.5 DN	10.5 DO	10.5 DP	10.5 DQ	10.5 DR	10.5 DS	10.5 DT	10.5 DU	10.5 DV	10.5 DW	10.5 DX	10.5 DY	10.5 DZ	10.5 EA	10.5 EB	10.5 EC	10.5 ED	10.5 EE	10.5 EF	10.5 EG	10.5 EH	10.5 EI	10.5 EJ	10.5 EK	10.5 EL	10.5 EM	10.5 EN	10.5 EO	10.5 EP	10.5 EQ	10.5 ER	10.5 ES	10.5 ET	10.5 EU	10.5 EV	10.5 EW	10.5 EX	10.5 EY	10.5 EZ	10.5 FA	10.5 FB	10.5 FC	10.5 FD	10.5 FE	10.5 FF	10.5 FG	10.5 FH	10.5 FI	10.5 FJ	10.5 FK	10.5 FL	10.5 FM	10.5 FN	10.5 FO	10.5 FP	10.5 FQ	10.5 FR	10.5 FS	10.5 FT	10.5 FU	10.5 FV	10.5 FW	10.5 FX	10.5 FY	10.5 FZ	10.5 GA	10.5 GB	10.5 GC	10.5 GD	10.5 GE	10.5 GF	10.5 GG	10.5 GH	10.5 GI	10.5 GJ	10.5 GK	10.5 GL	10.5 GM	10.5 GN	10.5 GO	10.5 GP	10.5 GQ	10.5 GR	10.5 GS	10.5 GT	10.5 GU	10.5 GV	10.5 GW	10.5 GX	10.5 GY	10.5 GZ	10.5 HA	10.5 HB	10.5 HC	10.5 HD	10.5 HE	10.5 HF	10.5 HG	10.5 HH	10.5 HI	10.5 HJ	10.5 HK	10.5 HL	10.5 HM	10.5 HN	10.5 HO	10.5 HP	10.5 HQ	10.5 HR	10.5 HS	10.5 HT	10.5 HU	10.5 HV	10.5 HW	10.5 HX	10.5 HY	10.5 HZ	10.5 IA	10.5 IB	10.5 IC	10.5 ID	10.5 IE	10.5 IF	10.5 IG	10.5 IH	10.5 II	10.5 IJ	10.5 IK	10.5 IL	10.5 IM	10.5 IN	10.5 IO	10.5 IP	10.5 IQ	10.5 IR	10.5 IS	10.5 IT	10.5 IU	10.5 IV	10.5 IW	10.5 IX	10.5 IY	10.5 IZ	10.5 JA	10.5 JB	10.5 JC	10.5 JD	10.5 JE	10.5 JF	10.5 JG	10.5 JH	10.5 JI	10.5 JJ	10.5 JK	10.5 JL	10.5 JM	10.5 JN	10.5 JO	10.5 JP	10.5 JQ	10.5 JR	10.5 JS	10.5 JT	10.5 JU	10.5 JV	10.5 JW	10.5 JX	10.5 JY	10.5 JZ	10.5 KA	10.5 KB	10.5 KC	10.5 KD	10.5 KE	10.5 KF	10.5 KG	10.5 KH	10.5 KI	10.5 KJ	10.5 KK	10.5 KL	10.5 KM	10.5 KN	10.5 KO	10.5 KP	10.5 KQ	10.5 KR	10.5 KS	10.5 KT	10.5 KU	10.5 KV	10.5 KW	10.5 KX	10.5 KY	10.5 KZ	10.5 LA	10.5 LB	10.5 LC	10.5 LD	10.5 LE	10.5 LF	10.5 LG	10.5 LH	10.5 LI	10.5 LJ	10.5 LK	10.5 LL	10.5 LM	10.5 LN	10.5 LO	10.5 LP	10.5 LQ	10.5 LR	10.5 LS	10.5 LT	10.5 LU	10.5 LV	10.5 LW	10.5 LX	10.5 LY	10.5 LZ	10.5 MA	10.5 MB	10.5 MC	10.5 MD	10.5 ME	10.5 MF	10.5 MG	10.5 MH	10.5 MI	10.5 MJ	10.5 MK	10.5 ML	10.5 MM	10.5 MN	10.5 MO	10.5 MP	10.5 MQ	10.5 MR	10.5 MS	10.5 MT	10.5 MU	10.5 MV	10.5 MW	10.5 MX	10.5 MY	10.5 MZ	10.5 NA	10.5 NB	10.5 NC	10.5 ND	10.5 NE	10.5 NF	10.5 NG	10.5 NH	10.5 NI	10.5 NJ	10.5 NK	10.5 NL	10.5 NM	10.5 NO	10.5 NP	10.5 NQ	10.5 NR	10.5 NS	10.5 NT	10.5 NU	10.5 NV	10.5 NW	10.5 NX	10.5 NY	10.5 NZ	10.5 OA	10.5 OB	10.5 OC	10.5 OD	10.5 OE	10.5 OF	10.5 OG	10.5 OH	10.5 OI	10.5 OJ	10.5 OK	10.5 OL	10.5 OM	10.5 ON	10.5 OO	10.5 OP	10.5 OQ	10.5 OR	10.5 OS	10.5 OT	10.5 OU	10.5 OV	10.5 OW	10.5 OX	10.5 OY	10.5 OZ	10.5 PA	10.5 PB	10.5 PC	10.5 PD	10.5 PE	10.5 PF	10.5 PG	10.5 PH	10.5 PI	10.5 PJ	10.5 PK	10.5 PL	10.5 PM	10.5 PN	10.5 PO	10.5 PP	10.5 PQ	10.5 PR	10.5 PS	10.5 PT	10.5 PU	10.5 PV	10.5 PW	10.5 PX	10.5 PY	10.5 PZ	10.5 QA	10.5 QB	10.5 QC	10.5 QD	10.5 QE	10.5 QF	10.5 QG	10.5 QH	10.5 QI	10.5 QJ	10.5 QK	10.5 QL	10.5 QM	10.5 QN	10.5 QO	10.5 QP	10.5 QQ	10.5 QR	10.5 QS	10.5 QT	10.5 QU	10.5 QV	10.5 QW	10.5 QX	10.5 QY	10.5 QZ	10.5 RA	10.5 RB	10.5 RC	10.5 RD	10.5 RE	10.5 RF	10.5 RG	10.5 RH	10.5 RI	10.5 RJ	10.5 RK	10.5 RL	10.5 RM	10.5 RN	10.5 RO	10.5 RP	10.5 RQ	10.5 RR	10.5 RS	10.5 RT	10.5 RU	10.5 RV	10.5 RW	10.5 RX	10.5 RY	10.5 RZ	10.5 SA	10.5 SB	10.5 SC	10.5 SD	10.5 SE	10.5 SF	10.5 SG	10.5 SH	10.5 SI	10.5 SJ	10.5 SK	10.5 SL	10.5 SM	10.5 SN	10.5 SO	10.5 SP	10.5 SQ	10.5 SR	10.5 SS	10.5 ST	10.5 SU	10.5 SV	10.5 SW	10.5 SX	10.5 SY	10.5 SZ	10.5 TA	10.5 TB	10.5 TC	10.5 TD	10.5 TE	10.5 TF	10.5 TG	10.5 TH	10.5 TI	10.5 TJ	10.5 TK	10.5 TL	10.5 TM	10.5 TN	10.5 TO	10.5 TP	10.5 TQ	10.5 TR	10.5 TS	10.5 TT	10.5 TU	10.5 TV	10.5 TW	10.5 TX	10.5 TY	10.5 TZ	10.5 UA	10.5 UB	10.5 UC	10.5 UD	10.5 UE	10.5 UF	10.5 UG	10.5 UH	10.5 UI	10.5 UJ	10.5 UK	10.5 UL	10.5 UM	10.5 UN	10.5 UO	10.5 UP	10.5 UQ	10.5 UR	10.5 US	10.5 UT	10.5 UY	10.5 UZ	10.5 VA	10.5 VB	10.5 VC	10.5 VD	10.5 VE	10.5 VF	10.5 VG	10.5 VH	10.5 VI	10.5 VJ	10.5 VK	10.5 VL	10.5 VM	10.5 VN	10.5 VO	10.5 VP	10.5 VQ	10.5 VR	10.5 VS	10.5 VT	10.5 VU	10.5 VV	10.5 VW	10.5 VX	10.5 VY	10.5 VZ	10.5 WA	10.5 WB	10.5 WC	10.5 WD	10.5 WE	10.5 WF	10.5 WG	10.5 WH	10.5 WI	10.5 WJ	10.5 WK	10.5 WL	10.5 WM	10.5 WN	10.5 WO	10.5 WP	10.5 WQ	10.5 WR	10.5 WS	10.5 WT	10.5 WU	10.5 WV	10.5 WW	10.5 WX	10.5 WY	10.5 WZ	10.5 XA	10.5 XB	10.5 XC	10.5 XD	10.5 XE	10.5 XF	10.5 XG	10.5 XH	10.5 XI	10.5 XJ	10.5 XK	10.5 XL	10.5 XM	10.5 XN	10.5 XO	10.5 XP	10.5 XQ	10.5 XR	10.5 XS	10.5 XT	10.5 XU	10.5 XV	10.5 XW	10.5 XX	10.5 XY	10.5 XZ	10.5 YA	10.5 YB	10.5 YC	10.5 YD	10.5 YE	10.5 YF	10.5 YG	10.5 YH	10.5 YI	10.5 YJ	10.5 YK	10.5 YL	10.5 YM	10.5 YN	10.5 YO	10.5 YP	10.5 YQ	10.5 YR	10.5 YS	10.5 YT	10.5 YU	10.5 YV	10.5 YW	10.5 YX	10.5 YZ	10.5 ZA	10.5 ZB	10.5 ZC	10.5 ZD	10.5 ZE	10.5 ZF	10.5 ZG	10.5 ZH	10.5 ZI	10.5 ZJ	10.5 ZK	10.5 ZL	10.5 ZM	10.5 ZN	10.5 ZO	10.5 ZP	10.5 ZQ	10.5 ZR	10.5 ZS	10.5 ZT	10.5 ZU	10.5 ZV	10.5 ZW	10.5 ZX	10.5 ZY	10.5 ZZ
STATE LINE	AREA (FROM DEED)	AREA (CALCULATED)	DIMENSION (FROM DEED)	DIMENSION (SCALED)	WATER	INTERSTATE HIGHWAY	U.S. HIGHWAY	STATE HIGHWAY	COUNTY HIGHWAY	ROADS ON STREETS	MAJOR TRANSMISSION LINES	SECTION CORNERS																																																																																																																																																																																																																																																																																																																																																																																																																																																																																																																																																																																																																																																																																																											
COUNTY LINE																																																																																																																																																																																																																																																																																																																																																																																																																																																																																																																																																																																																																																																																																																																							
CORPORATION LINE																																																																																																																																																																																																																																																																																																																																																																																																																																																																																																																																																																																																																																																																																																																							
DISTRICT LINE																																																																																																																																																																																																																																																																																																																																																																																																																																																																																																																																																																																																																																																																																																																							
ROAD R/W																																																																																																																																																																																																																																																																																																																																																																																																																																																																																																																																																																																																																																																																																																																							
TRAVELED ROAD																																																																																																																																																																																																																																																																																																																																																																																																																																																																																																																																																																																																																																																																																																																							
RAILROAD R/W																																																																																																																																																																																																																																																																																																																																																																																																																																																																																																																																																																																																																																																																																																																							
HIGHWAY LINE																																																																																																																																																																																																																																																																																																																																																																																																																																																																																																																																																																																																																																																																																																																							
LAND LOCK																																																																																																																																																																																																																																																																																																																																																																																																																																																																																																																																																																																																																																																																																																																							
INTERIOR TRACT LINE OR ORIGINAL TRACT LINE																																																																																																																																																																																																																																																																																																																																																																																																																																																																																																																																																																																																																																																																																																																							
SUBDIVISION LOT NUMBER	29																																																																																																																																																																																																																																																																																																																																																																																																																																																																																																																																																																																																																																																																																																																						
SUBDIVISION SHEET	15																																																																																																																																																																																																																																																																																																																																																																																																																																																																																																																																																																																																																																																																																																																						

TO
BE
ANNEXED



I, Catherine Sarris, Clerk for the City of Alabaster, Alabama,
hereby certify that I have posted a copy of the foregoing Ordinance in the
following places within the City of Alabaster:

Library

City Hall

Water & Gas Board

U. S. Post Office

This the 19 day of March, 1992.


City Clerk

Inst # 1993-28147

09/14/1993-28147
02:45 PM CERTIFIED
SHELBY COUNTY JUDGE OF PROBATE
005 MJS 18.50