

ORDINANCE NO. 90-966

656

An ordinance to alter, rearrange and extend the corporate limits of the City of Hoover, Alabama, so as to embrace and include within the corporate limits of said City all territory now within such corporate limits and also certain other territory contiguous to said City.

WHEREAS, a petition signed by Daniel Corporation, requesting that certain territory described therein be annexed to the City of Hoover; and

WHEREAS, there is attached to the said petition a map of said territory showing its relationship to the corporate limits of the City; and

WHEREAS, this Council has determined and found that the matters set forth and alleged in the said petition are true and that it is in the public interest that said property be annexed into the City of Hoover;

NOW THEREFORE, be it ordained by the Council of the City of Hoover as follows:

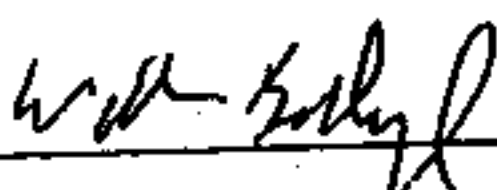
Section 1: That said Council hereby assents to the annexation of said territory to the City of Hoover, Alabama, and the corporate limits of the City of Hoover are hereby extended and rearranged pursuant to the provisions of Chapter 42, Article 2, Code of Alabama, 1975 (Sections 11-42-20 through 11-42-23, as amended) so as to embrace and include said territory, in addition to the territory already within its present corporate limits, within the corporate area of said City, which said territory is not within the corporate limits or municipal boundaries of another municipality and does not lie at any point more than one-half the distance between the present corporate limits and the corporate limits of any other municipality. Said property is described in Exhibit A attached hereto and made a part hereof.

Section 2: The City Clerk shall file a certified copy of this ordinance containing an accurate description of said annexed territory with the Probate Judge of Shelby County, Alabama, and also cause a copy of this ordinance to be published in a newspaper of general circulation in the City of Hoover.

BOOK 321 PAGE 783

✓ Hoover

ADOPTED by the Council of the City of Hoover, Alabama, on the
11th day of December, 1990.



President of the Council

APPROVED:



Mayor

ATTESTED:



City Clerk

BOOK 321 PAGE 784

PHASE XII

EXHIBIT "A"

PARCEL 1

Commence at the southeast corner of the northeast quarter of the southwest quarter of Section 32, Township 18 South, Range 1 West, Shelby County, Alabama; thence run North 89 degrees 20 minutes 05 seconds West for a distance of 1332.82 feet to a point; thence run North 63 degrees 04 minutes 57 seconds West for a distance of 407.87 feet to the point of beginning; thence continue along last described course for a distance of 75.12 feet to a point; thence run North 23 degrees 38 minutes 46 seconds East for a distance of 1160.23 feet to a point; thence run North 24 degrees 52 minutes 40 seconds East for a distance of 863.26 feet to the point of commencement of a curve to the right having a central angle of 5 degrees 25 minutes 55 seconds and a radius of 5613.57 feet; thence run along the arc of said curve in a northeasterly direction for a distance of 532.20 feet to a point; thence run North 30 degrees 18 minutes 35 seconds East for a distance of 1245.39 feet to a point; thence run South 57 degrees 51 minutes 43 seconds East for a distance of 75.04 feet to a point; thence run South 30 degrees 18 minutes 35 seconds West for a distance of 1243.00 feet to the commencement of a curve to the left having a central angle of 5 degrees 25 minutes 55 seconds and a radius of 5538.57 feet; thence run along arc of said curve for a distance of 525.09 feet to a point; thence run South 24 degrees 52 minutes 40 seconds West for a distance of 862.46 feet to a point; thence run South 23 degrees 38 minutes 46 seconds West for a distance of 1163.71 feet to the point of beginning.

PARCEL 2

Commence at the southwest corner of Section 28, Township 18 South, Range 1 West, Shelby County, Alabama; thence North 1 degree 43 minutes 29 seconds East for a distance of 884.43 feet to a point; thence North 51 degrees 42 minutes 49 seconds East for a distance of 672.12 feet to a point; thence North 39 degrees 36 minutes 32 seconds East for a distance of 934.39 feet to a point; thence South 62 degrees 53 minutes 48 seconds East for a distance of 260.00 feet to a point; thence North 1 degree 36 minutes 12 seconds East for a distance of 1225.77 feet to the point of beginning; thence continue along the last described course for a distance of 153.66 feet to a point; thence South 56 degrees 56 minutes 56 seconds East for a distance of 196.22 feet to a point; thence South 74 degrees 34 minutes 09 seconds West for a distance of 175.07 feet to the point of beginning.

PARCEL 3

Commence at the northeast corner of Section 28, Township 18 South, Range 1 West, Shelby County, Alabama; thence run South 1 degree 10 minutes 25 seconds West for a distance of 1326.19 feet to the southeast corner of the northeast one-quarter of the northeast one-quarter of the last described section; thence North 88 degrees 56 minutes 50 seconds West for a distance of 814.56 feet to the point of beginning; thence South 1 degree 42 minutes 26 seconds West for a distance of 729.65 feet to a point; thence North 88 degrees 53 minutes 58 seconds West for a distance of 250.01 feet to a point; thence North 1 degree 42 minutes 16 seconds East for a distance of 729.44 feet to a point; thence South 88 degrees 56 minutes 50 seconds East for a distance of 250.02 feet to the point of beginning.

BOOK 321 PAGE 786

BOOK 321 PAGE 787

CLERK'S CERTIFICATION

I, Linda Crump, City Clerk for the City of Hoover, Alabama, hereby certify that the attached is a true and correct copy of Ordinance # 90-966 which was passed and adopted by the City Council of the City of Hoover on the 11th day of Dec, 1990, and that it has been published in a newspaper of general circulation and is now in full force and effect.

Linda Crump
City Clerk

STATE OF ALABAMA

SHELBY COUNTY

We, the undersigned, hereby request and petition the City of Hoover to take whatever action is necessary to cause our property to be annexed into the corporate limits of the City of Hoover.

DATE: January 29, 1990

OWNER:

DANIEL U.S. PROPERTIES LIMITED PARTNERSHIP,
a Virginia limited partnership

By: Daniel Realty Investment Corporation,
a Virginia corporation,
Its General Partner

By: 

Its: President

LEGAL DESCRIPTION: See Exhibit A attached hereto.

BOOK 321 PAGE 788

PHASE XII

EXHIBIT "A"

PARCEL 1

Commence at the southeast corner of the northeast quarter of the southwest quarter of Section 32, Township 18 South, Range 1 West, Shelby County, Alabama; thence run North 89 degrees 20 minutes 05 seconds West for a distance of 1332.82 feet to a point; thence run North 63 degrees 04 minutes 57 seconds West for a distance of 407.87 feet to the point of beginning; thence continue along last described course for a distance of 75.12 feet to a point; thence run North 23 degrees 38 minutes 46 seconds East for a distance of 1160.23 feet to a point; thence run North 24 degrees 52 minutes 40 seconds East for a distance of 863.26 feet to the point of commencement of a curve to the right having a central angle of 5 degrees 25 minutes 55 seconds and a radius of 5613.57 feet; thence run along the arc of said curve in a northeasterly direction for a distance of 532.20 feet to a point; thence run North 30 degrees 18 minutes 35 seconds East for a distance of 1245.39 feet to a point; thence run South 57 degrees 51 minutes 43 seconds East for a distance of 75.04 feet to a point; thence run South 30 degrees 18 minutes 35 seconds West for a distance of 1243.00 feet to the commencement of a curve to the left having a central angle of 5 degrees 25 minutes 55 seconds and a radius of 5538.57 feet; thence run along arc of said curve for a distance of 525.09 feet to a point; thence run South 24 degrees 52 minutes 40 seconds West for a distance of 862.46 feet to a point; thence run South 23 degrees 38 minutes 46 seconds West for a distance of 1163.71 feet to the point of beginning.

PARCEL 2

Commence at the southwest corner of Section 28, Township 18 South, Range 1 West, Shelby County, Alabama; thence North 1 degree 43 minutes 29 seconds East for a distance of 884.43 feet to a point; thence North 51 degrees 42 minutes 49 seconds East for a distance of 672.12 feet to a point; thence North 39 degrees 36 minutes 32 seconds East for a distance of 934.39 feet to a point; thence South 62 degrees 53 minutes 48 seconds East for a distance of 260.00 feet to a point; thence North 1 degree 36 minutes 12 seconds East for a distance of 1225.77 feet to the point of beginning; thence continue along the last described course for a distance of 153.66 feet to a point; thence South 56 degrees 56 minutes 56 seconds East for a distance of 196.22 feet to a point; thence South 74 degrees 34 minutes 09 seconds West for a distance of 175.07 feet to the point of beginning.

PARCEL 3

Commence at the northeast corner of Section 28, Township 18 South, Range 1 West, Shelby County, Alabama; thence run South 1 degree 10 minutes 25 seconds West for a distance of 1326.19 feet to the southeast corner of the northeast one-quarter of the northeast one-quarter of the last described section; thence North 88 degrees 56 minutes 50 seconds West for a distance of 814.56 feet to the point of beginning; thence South 1 degree 42 minutes 26 seconds West for a distance of 729.65 feet to a point; thence North 88 degrees 53 minutes 58 seconds West for a distance of 250.01 feet to a point; thence North 1 degree 42 minutes 16 seconds East for a distance of 729.44 feet to a point; thence South 88 degrees 56 minutes 50 seconds East for a distance of 250.02 feet to the point of beginning.

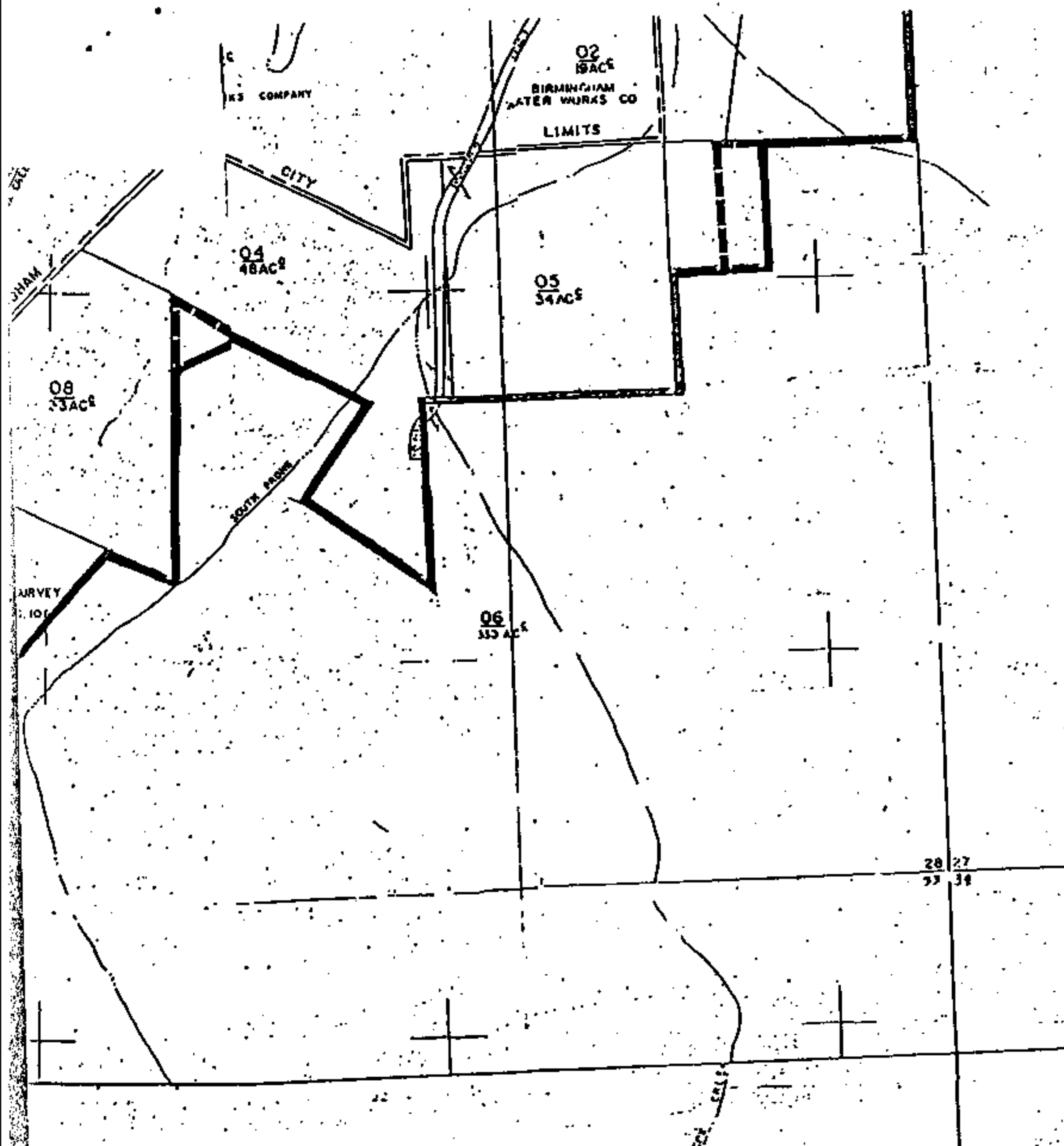
BOOK 321 PAGE 791

CLERK'S CERTIFICATE

I hereby certify that the attached is a true and correct copy of a petition(s) presented to the City Council of the City of Hoover by persons whose name(s) appear thereon, requesting that their property be annexed to the City of Hoover.

Linda Crump
City Clerk

09 13AC
09.01



BOOK 321 PAGE 793

STATE OF ALA. SHELBY CO.
I CERTIFY THIS
INSTRUMENT WAS FILED

90 DEC 12 AM 10:19

JUDGE OF PROBATE

1. Deed Tax	—
2. Mtg Tax	—
3. Recording Fee	\$ 27.50
4. Indexing Fee	\$ 3.00
5. No Tax Fee	—
6. Certified Fee	\$ 1.00
Total	\$ 31.50

