

WE # 61700-08-0042-7-00

868

507241

STATE OF ALABAMA,

County of Shelby

KNOWN ALL MEN BY THESE PRESENTS, that the undersigned,

Equity Partners

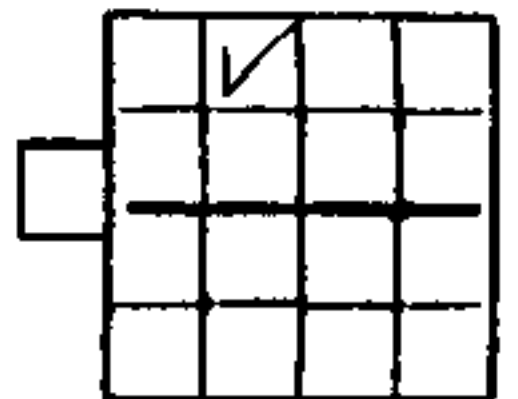
BOOK 167 PAGE 410
in consideration of the sum of One and No/100 Dollars (\$1.00), to it in had paid by Alabama Power Company, a corporation, the receipt whereof is acknowledged, does hereby grants to said Alabama Power Company, its successors and assigns, the right to construct, install, operate and maintain, and the right to permit other corporations and persons to construct, install operate and maintain, along routes to be selected by the grantee, (generally shown crosshatched on the attached drawing) its successors or assigns, all poles, wires, conduits, cables, translosures and other appliances and facilities useful or necessary in connection therewith for the overhead and underground transmission and distribution of electric power and for the overhead and underground communication service, upon, over, and under and across the following described land, situated in Shelby County, Alabama.

For legal description, SEE EXHIBIT "A" ATTACHED HERETO AND MADE A PART HEREOF.

This instrument prepared in
the Corporate Real Estate
Dept. of Alabama Power Co.
Birmingham, Ala.

By P. C. Legg

GRANTEE'S ADDRESS
ALABAMA POWER CO.
P. O. BOX 2641
BIRMINGHAM, AL 35291
ATT: CORP. REAL ESTATE



S36 T18^S R2^W

Together with all the rights and privileges necessary or convenient for the full enjoyment or use thereof, including the right of ingress and egress to and from said facilities and the right to excavate for installation, replacement, repair, and removal thereof; and also the right to cut and keep clear all trees, underbrush, shrubbery, roots and other growth, and to keep clear any and all obstructions or obstacles of whatever character on, under or above said facilities.

TO HAVE AND TO HOLD the same to the said Alabama Power Company, its successors and assigns forever.

IN WITNESS WHEREOF, the said Equity Partners has caused this instrument to be executed in its name by Thomas H. Lowder as its General Partner and attested by N/A as its _____, and its corporate seal to be hereto affixed, on this

the 28th day of August, 1987.

Attest:

Thomas H. Lowder
EQUITY PARTNERS
THOMAS H. LOWDER, GENERAL PARTNER

STATE OF Alabama

COUNTY OF Jefferson

I, Cynthia L. Frank, Notary Public, in and for said County in said

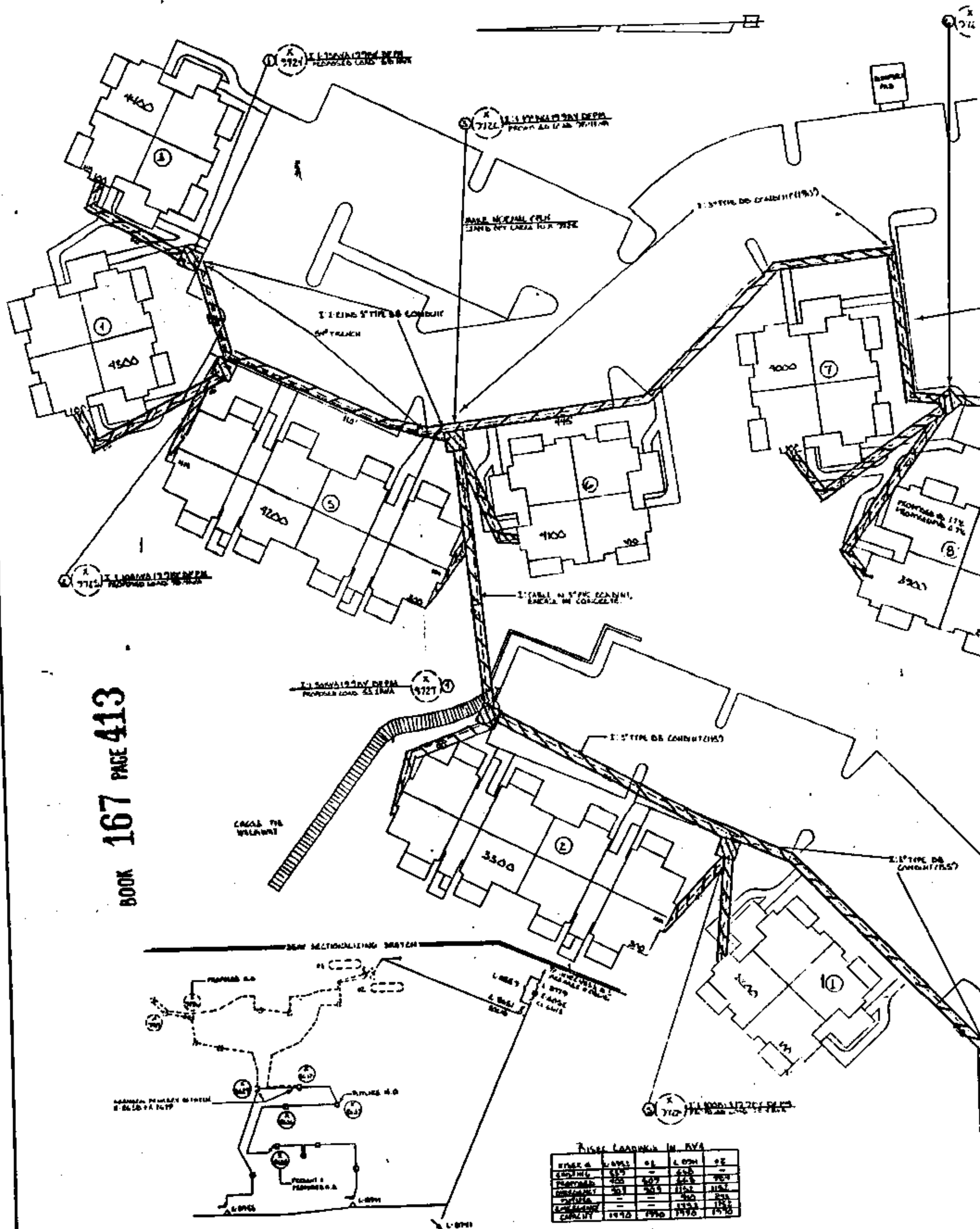
State, hereby certify that Thomas H. Lowder whose name as General Partner of Equity Partners

corporation, is signed to the foregoing instrument, and who is known to me, acknowledged before me on this day that, being informed of the contents of this instrument, he as such officer and with full authority executed the same voluntarily for and as the act of said corporation.

Given under my hand and official seal, this the 28th day of August, 1987.

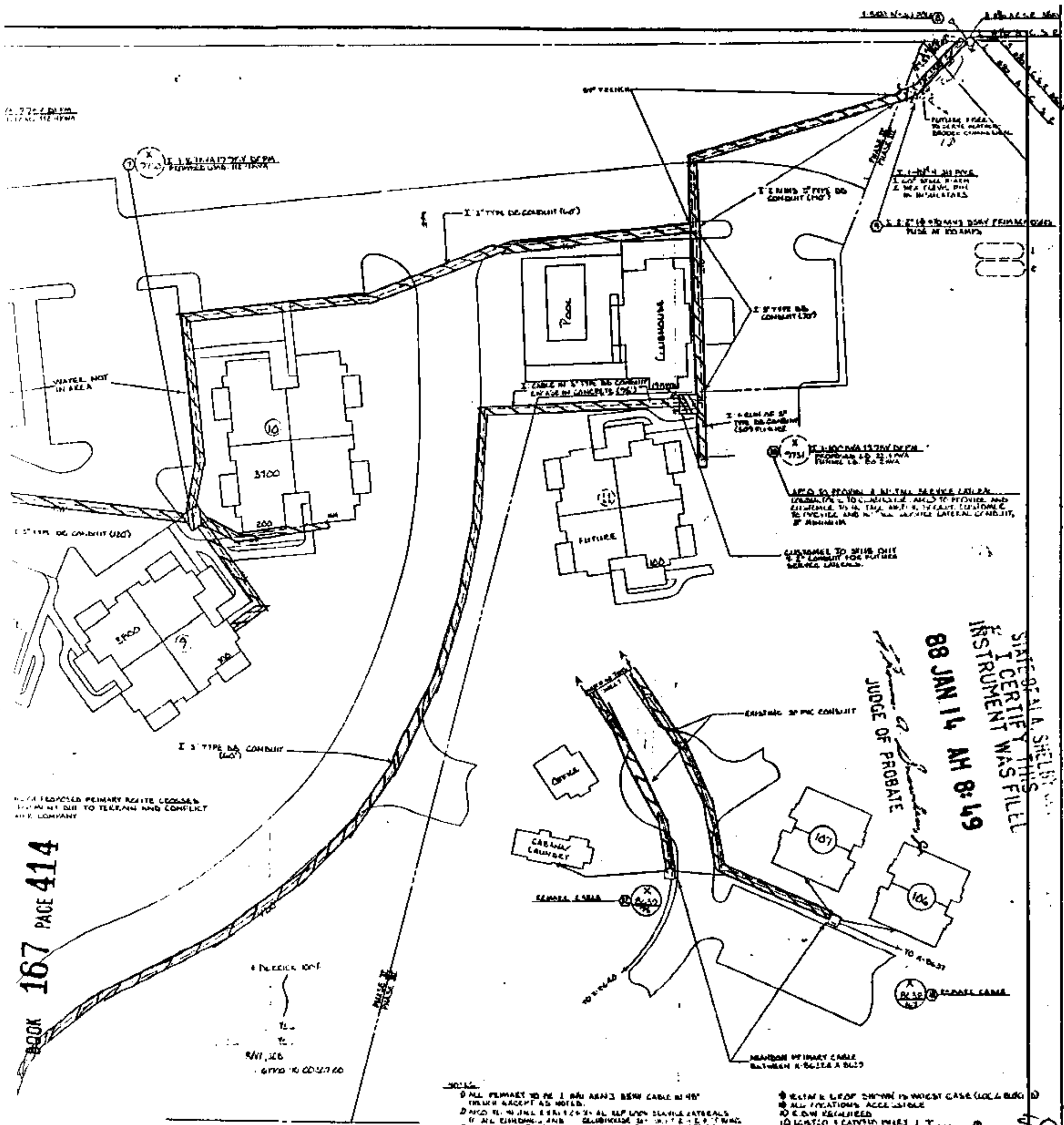
Cynthia L. Frank
Notary Public

A tract of land in the Northeast Quarter of the Northwest Quarter of Section 36, Township 18 South, Range 2 West described as follows: Commence at the Northwest corner of said Forty, thence run S88°13'55"E a distance of 725.98 feet to the Point of Beginning; thence right and run S60°41'46"E a distance of 676.55 feet; thence right and run S00°24'49"E a distance of 1029.58 feet; thence right and run N68°41'10"W a distance of 104.15 feet; thence left and run S88°02'45"W a distance of 60.0 feet; thence right and run N01°57'15"W a distance of 140.0 feet; thence left and run N75°34'45"W a distance of 343.73 feet; thence right and run N00°55'00"W a distance of 179.30 feet; thence continue N00°55'00"W a distance of 50.70 feet; thence left and run N45°26'56"W a distance of 252.21 feet; thence right and run N40°04'00"E a distance of 142.56 feet; thence left and run N33°09'00"E a distance of 230.34 feet; thence left and run N14°38'00"E a distance of 132.54 feet; thence left and run N29°18'00"W a distance of 94.44 feet; thence left and run N80°21'00"W a distance of 65.07 feet; thence right and run N85°32'00"W a distance of 77.06 feet; thence right and run N68°07'00"W a distance of 107.00 feet; thence right and run N41°03'47"E a distance of 164.21 feet to the Point of Beginning.



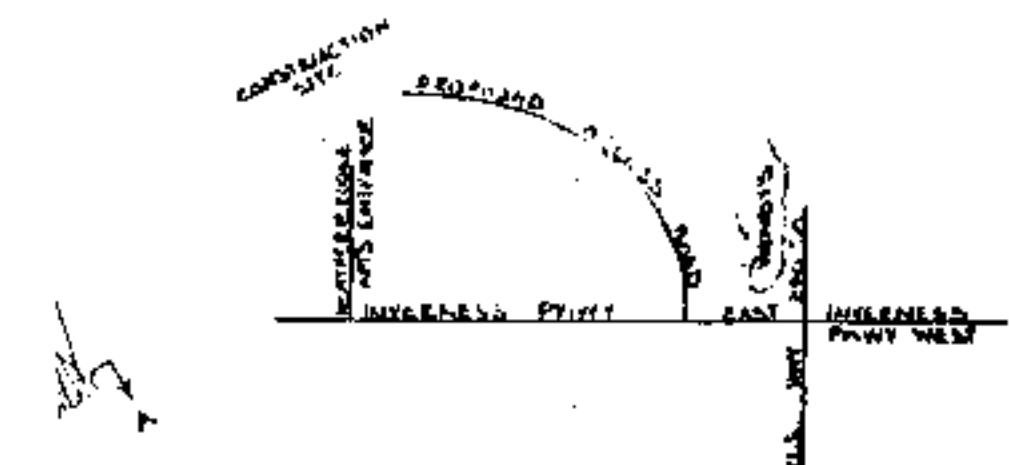
FISHER LOADING IN RYA				
FISHER #	1993	94	1994	95
SHAWING	557	-	645	-
PLANTING	400	409	448	984
CONCRETE	201	209	1152	1152
WATER	-	-	400	233
CONCRETE	-	-	1723	1723
CONCRETE	1970	1980	1970	1970

11-2776-2-11/11/11
11-2776-2-11/11/11



BOOK 167 PAGE 414

ALL PROPOSED PRIMARY ROUTE CROSSES
EXISTING DUTY TO TERMINAL AND CONFLICT
WITH COMPANY



- NOTES:**
1. ALL PRIMARY TO BE 12" TYPE DS CONDUIT 120' MINIMUM DEPTH EXCEPT AS NOTED.
 2. ALL 12" TYPE DS CONDUIT TO BE 12" TYPE DS CONDUIT 120' MINIMUM DEPTH EXCEPT AS NOTED.
 3. ALL 2" TYPE DS CONDUIT TO BE 2" TYPE DS CONDUIT 120' MINIMUM DEPTH EXCEPT AS NOTED.
 4. ALL 12" TYPE DS CONDUIT TO BE 12" TYPE DS CONDUIT 120' MINIMUM DEPTH EXCEPT AS NOTED.
 5. ALL 2" TYPE DS CONDUIT TO BE 2" TYPE DS CONDUIT 120' MINIMUM DEPTH EXCEPT AS NOTED.
 6. ALL 12" TYPE DS CONDUIT TO BE 12" TYPE DS CONDUIT 120' MINIMUM DEPTH EXCEPT AS NOTED.
 7. ALL 2" TYPE DS CONDUIT TO BE 2" TYPE DS CONDUIT 120' MINIMUM DEPTH EXCEPT AS NOTED.
 8. ALL 12" TYPE DS CONDUIT TO BE 12" TYPE DS CONDUIT 120' MINIMUM DEPTH EXCEPT AS NOTED.
 9. ALL 2" TYPE DS CONDUIT TO BE 2" TYPE DS CONDUIT 120' MINIMUM DEPTH EXCEPT AS NOTED.
 10. ALL 12" TYPE DS CONDUIT TO BE 12" TYPE DS CONDUIT 120' MINIMUM DEPTH EXCEPT AS NOTED.

1. ALL PRIMARY TO BE 12" TYPE DS CONDUIT 120' MINIMUM DEPTH EXCEPT AS NOTED.
2. ALL 12" TYPE DS CONDUIT TO BE 12" TYPE DS CONDUIT 120' MINIMUM DEPTH EXCEPT AS NOTED.
3. ALL 2" TYPE DS CONDUIT TO BE 2" TYPE DS CONDUIT 120' MINIMUM DEPTH EXCEPT AS NOTED.
4. ALL 12" TYPE DS CONDUIT TO BE 12" TYPE DS CONDUIT 120' MINIMUM DEPTH EXCEPT AS NOTED.
5. ALL 2" TYPE DS CONDUIT TO BE 2" TYPE DS CONDUIT 120' MINIMUM DEPTH EXCEPT AS NOTED.
6. ALL 12" TYPE DS CONDUIT TO BE 12" TYPE DS CONDUIT 120' MINIMUM DEPTH EXCEPT AS NOTED.
7. ALL 2" TYPE DS CONDUIT TO BE 2" TYPE DS CONDUIT 120' MINIMUM DEPTH EXCEPT AS NOTED.
8. ALL 12" TYPE DS CONDUIT TO BE 12" TYPE DS CONDUIT 120' MINIMUM DEPTH EXCEPT AS NOTED.
9. ALL 2" TYPE DS CONDUIT TO BE 2" TYPE DS CONDUIT 120' MINIMUM DEPTH EXCEPT AS NOTED.
10. ALL 12" TYPE DS CONDUIT TO BE 12" TYPE DS CONDUIT 120' MINIMUM DEPTH EXCEPT AS NOTED.

STATE OF ALABAMA
I CERTIFY THIS
INSTRUMENT WAS FILED
88 JAN 14 AM 8:49
JUDGE OF PROBATE

2. Mtg. Tax	
3. Recording Fee	2.50
4. Indexing Fee	1.00
TOTAL	14.00

ALABAMA POWER COMPANY	
JOB NORTH SHALAN 35KV DISTRIBUTION SYSTEM	
BRYAN HEATHBROOKE APARTMENTS PHASE II	
PROVIDE 100% OF 35KV SERVICE TO SHALAN	
SCALE	1" = 50' B/M