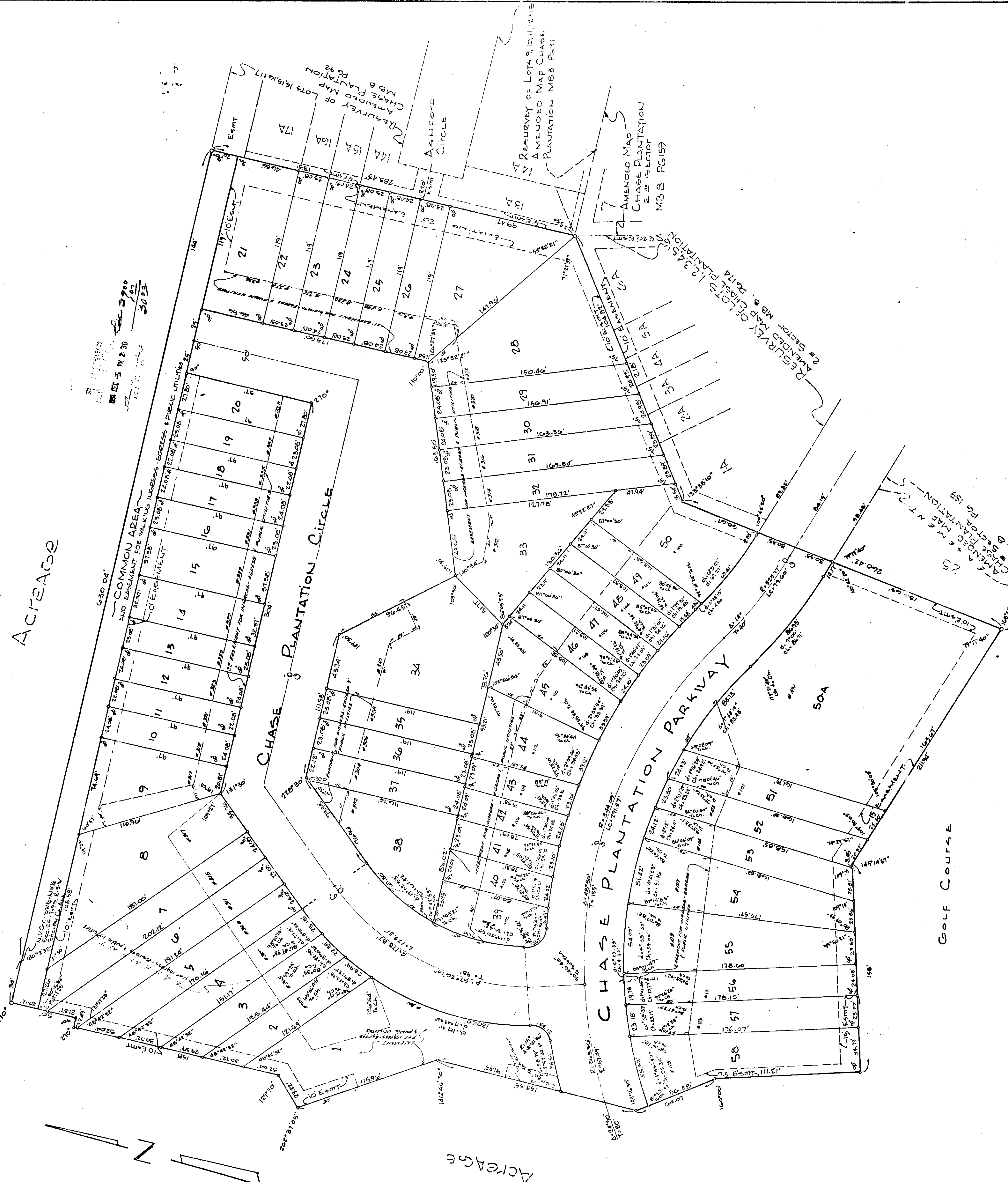


987-0769
Hester/Homen

MAP BOOK 9 PAGE 47

ACREAGE

COMMON AREA
AND EASEMENT FOR WALKING, INCLUDING ACCESS TO PUBLIC UTILITIES
TO EASEMENT
31.75' x 23.08' = 733.08 sq. ft.
24.04' x 23.08' = 554.88 sq. ft.
21.80' x 23.08' = 503.04 sq. ft.
18.56' x 23.08' = 428.46 sq. ft.
15.32' x 23.08' = 353.88 sq. ft.
12.08' x 23.08' = 279.30 sq. ft.
8.84' x 23.08' = 204.72 sq. ft.
5.60' x 23.08' = 130.14 sq. ft.
2.36' x 23.08' = 54.56 sq. ft.
Total = 3,023.04 sq. ft.
= 0.0694 acres



12/05/1984 02:30:00 PM FILED/CERT
Shelby County Judges of Probate, AL
1984120500026960 1/2 3 00

ROBERTS & SON, INC.
ENGINEERS, ARCHITECTS AND SURVEYORS
1000 1/2 N. 10TH ST., SUITE 100
NASHVILLE, TENNESSEE 37203
PHONE 252-1111

GOLF COURSE

