

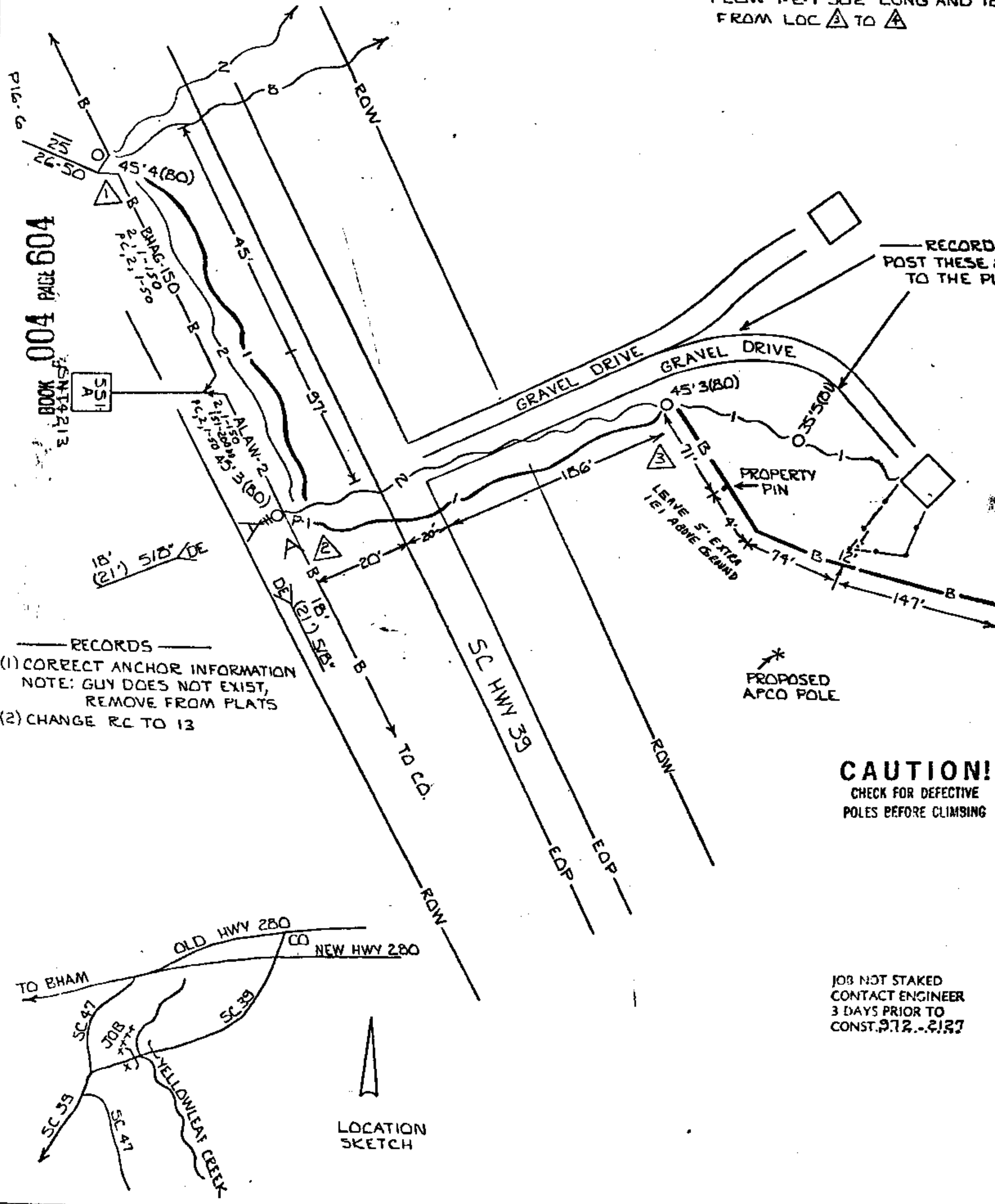
RIGHT OF WAY EASEMENT

THIS DOCUMENT PREPARED BY
J.N. CALHOUN ENGINEER OF
SOUTH CENTRAL BELL TELEPHONE CO.

Joint Use
P-G Volts 7.2KV
APCO MTVL

CONSTRUCTION
FLOW 1-E-1 902' LONG AND 12"
FROM LOC A TO A

BOOK 004 PAGE 604



- RECORDS
- (1) CORRECT ANCHOR INFORMATION
NOTE: GUY DOES NOT EXIST,
REMOVE FROM PLATS
 - (2) CHANGE RC TO 13

CAUTION!
CHECK FOR DEFECTIVE
POLES BEFORE CLIMBING

JOB NOT STAKED
CONTACT ENGINEER
3 DAYS PRIOR TO
CONST. 972.-2127

EP

LES

PROPERTY
PIN

BOOK 004 PAGE 605

434-0305
PRIORITY ONE
SERVICE ORDER
EXPECTED AUGUST 1984

8405-NT-52
MAY 1980

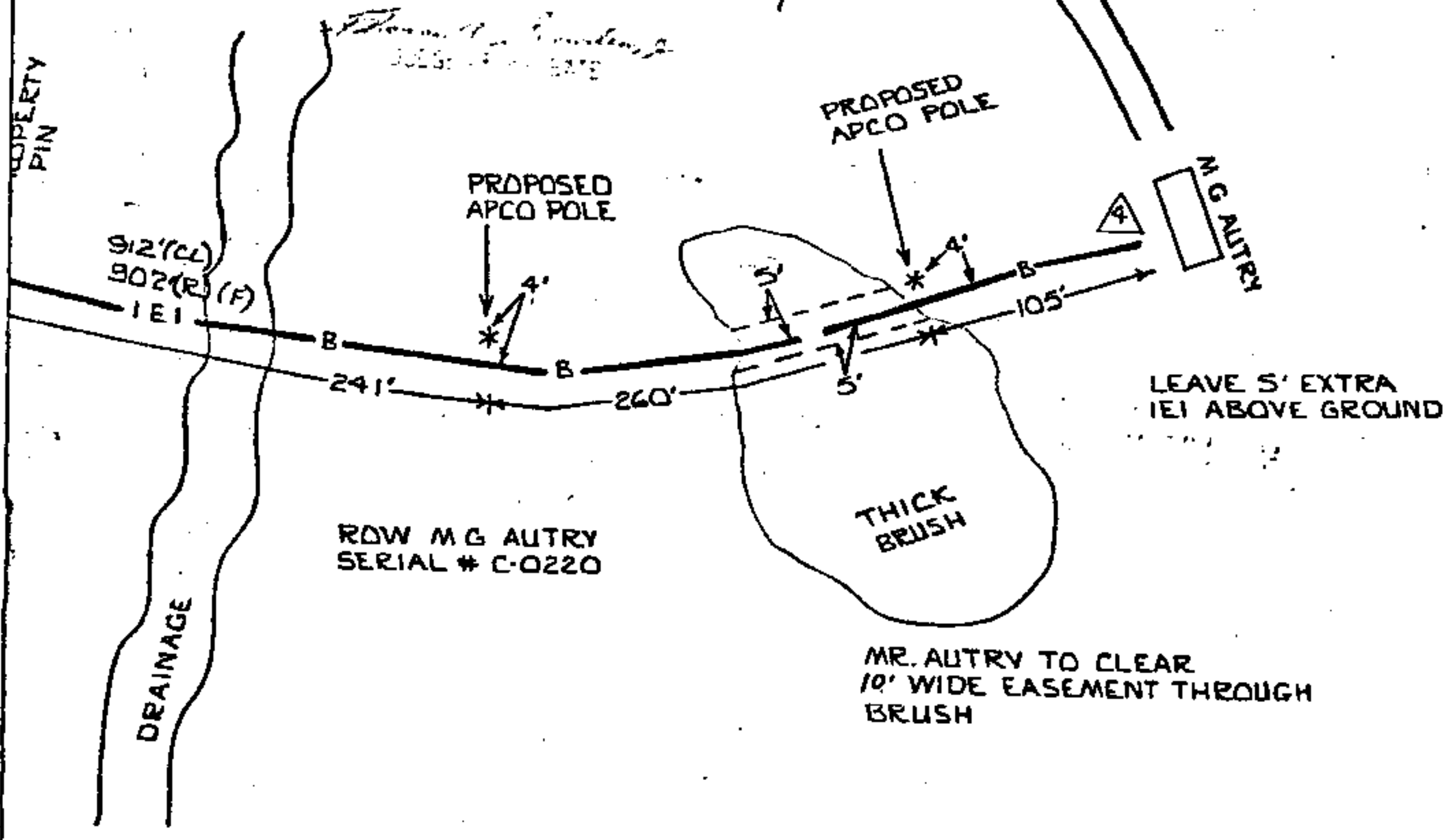


APCO JOB # 460000-001644-00
APCO-10-24-22222
MANUAL-CDS
SERVED-10-24-22222

STATE OF ALA. MOBILE CO.
I CERTIFY THIS
INSTRUMENT IS CORRECT

1984 OCT -8 AM 9:18

*See tax. 50
Reg 7.50
Ind. 1.00
9.00*



FUTURE

1. D. S. R.
AS ORDER TO WORK
ORDER(S) #

SVC ORDER EXPECTED
AUG. '84

LARGE	SMALL	X
JOB	JOB	
APPROVAL	DATE	
DIST. MGR.		
MGR.		
ENGR.		
DETD. 5-15-84 PLAN.		
POST. 5-15-84 REL. 7-16-84		
GR. EXP.	1900	
CR. ADD.	1900	
C. OF RM.		
PLY. RES.		
SALVAGE		
MAINTENANCE		
N. Y. CAT.	GDI	

TAX DIST	05813	▲					
RECORDS REF	0503	▲					
ISSUE	DATE	ENG	APVD	NATURE OF REVISION			
SOUTH CENTRAL BELL TELEPHONE COMPANY							
TLR	BIRMINGHAM (SOUTH) ALABAMA			ENG		PROJ NO	
CC	CHELSEA (672)			JNC	GW		
13	PLACE 1E1 WIRE PED 16-6-1			APVD	DATE	EST OR JO	
	SC HWY 39 FOR FUTURE			CRB	5/21/84	434-0305	
	SERVICE TO M.G. AUTRY					DAG NO	
7.2	NO SCALE					1 OF 1	