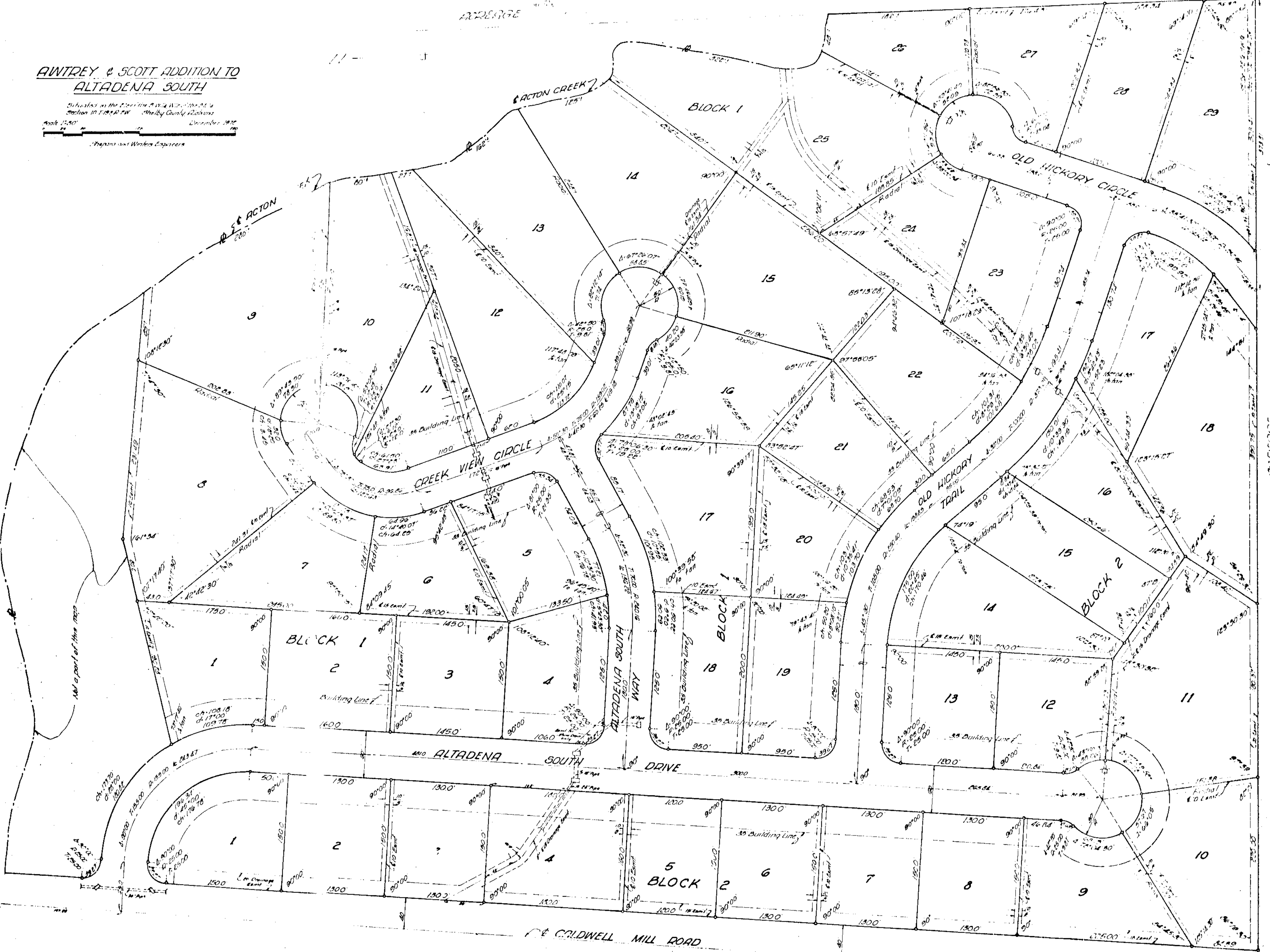


**AWITREY & SCOTT ADDITION TO
ALTADENA SOUTH**

Subdivision in the County of Shelby, Alabama
Section 10, Township 19 South, Range 2 West, Shelby County, Alabama
Book 1580, Page 113
December 1972
Robert & Son, Inc.
Planners and Working Engineers

Map Book 1580 Page 113



THE STATE OF ALABAMA
SHELBY COUNTY

The undersigned, August A. Winters, for Edward A. Winters, Engineers, a duly licensed and bonded engineering firm, hereby certify that this plat or map was made pursuant to a survey made by August A. Winters, Engineer, showing the subdivisions into lots, length, width and name of each street, as well as the number of each lot and all lot corners and curve points as shown and designated by small open circles.

IN WITNESS WHEREOF we have set our hands and the seal of the State of Alabama at Montgomery, Alabama, this 14th day of December, 1972.

AUGUST A. WINTERS, ENGINEER
Surveyor

by August A. Winters
August A. Winters, Esq., Notary Public

THE STATE OF ALABAMA
SHELBY COUNTY

I, the undersigned, a Notary Public in and for said County and State, do hereby certify that August A. Winters, E. Albert Awitrey and J. Gray Scott, Jr., as names are signed above, and who are known to me, acknowledged before me on this date, that after having been duly informed of the contents of said certificate, they executed the same voluntarily as such individuals with full authority for and as the act of said owners.

IN WITNESS WHEREOF I have set my hand and seal this 14th day of December, 1972.

Edward A. Winters
Notary Public

1877. This is a split family residential subdivision.

BE IT ORDAINED BY THE SHELBY COUNTY COMMISSIONERS that the assent of this body be, and the same hereby be, given to the destination of the streets, alleys, and public grounds as shown on plat or map of AWITREY & SCOTT ADDITION TO ALTADENA SOUTH, which said plat or map is certified to have been made by August A. Winters, an engineer, at the instance of A. S. Development Corporation, its owner, and has been submitted to this Shelby County Clerk, of area date herewith.

Approved: County Auditor
1-31-73

Approved: Shelby County Clerk
The Shelby County Clerk

ROBERTS & SON, INC.
PLANNERS AND ENGINEERS
1000 1/2 AVENUE B
MONTGOMERY, ALABAMA 36102

1580-113-118