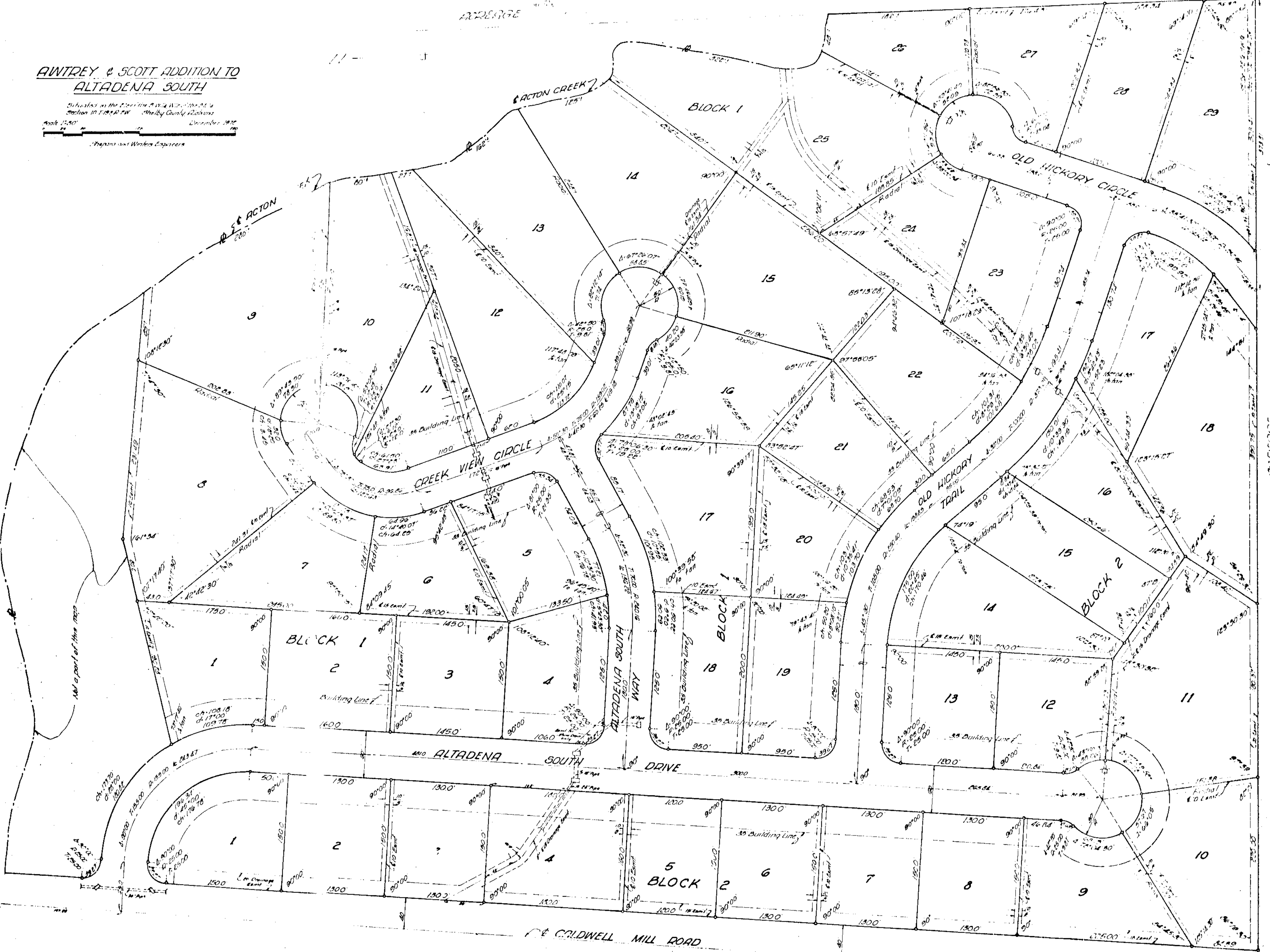


**AWITREY & SCOTT ADDITION TO
ALTADENA SOUTH**

Subdivision in the County of Shelby, Alabama
Section 10, Township 19 South, Range 2 West, Shelby County, Alabama
Book 1580, Page 113
December 1972
Robert & Son, Inc.
Planners and Working Engineers

Map Book 1580 Page 113



THE STATE OF ALABAMA
SHELBY COUNTY

The undersigned, August A. Winters, for Edward A. Winters, Engineers, a duly licensed Surveyor, hereby certify that this plat or map was made pursuant to a survey made by me, and that the same is a true and correct copy of the original survey, showing the length, width and name of each street, as well as the number of each lot and the area of each lot, and that the same are not subject to any mortgage.

IN WITNESS WHEREOF we have set our hands and the seal of the Surveyor at Montgomery, Alabama, this 14th day of December, 1972.

EDWARD A. WINTERS, SURVEYOR

August A. Winters, Reg. No. 12100

A & S DEVELOPMENT CORPORATION
Owner

by Albert A. Wintre
R. Albert Wintre, President

by James Scott
James Scott, Secretary

THE STATE OF ALABAMA
SHELBY COUNTY

I, the undersigned, a Notary Public in and for said County and State, do hereby certify that August A. Winters, R. Albert Wintre and J. Gray Scott, Jr., as names are signed above, and who are known to me, acknowledged before me on this date, that after having been duly informed of the contents of said certificate, they executed the same voluntarily as such individuals with full authority for and as the act of same.

WITNESS MY HAND AND SEAL this 14th day of December, 1972.

Approved: County Clerk

Approved: Notary Public
1-31-73

Approved: Shelby County Judge of Probate
The Honorable James H. Hight

NOTE: This is a single family residential subdivision.

ROBERTS & SON, INC.
Planners and Working Engineers

1580-113-118