

RESOLUTION 03-12-22-04

WHEREAS, the Shelby County Commission ("Commission") is the governing body of Shelby County and, as such, has the authority to establish and change the configuration, boundaries, and/or designation of precincts and voting districts within the County, and

WHEREAS, the Commission has and does hereby find and determine that in order to make the election process more convenient for voters and to facilitate the administration of the election process, the geographical territory of Shelby County should be and the same is hereby divided into precincts and voting districts as described herein.

NOW, THEREFORE, BE IT RESOLVED BY THE SHELBY COUNTY COMMISSION AS FOLLOWS:

1. That Shelby County and all territory contained therein shall be and the same is hereby divided into precincts and voting districts as described, designated, and defined herein and as defined in Section 17-5A-2, et seq., Code of Alabama (1975), as amended, and other provisions thereof.
2. Shelby County shall be and is hereby divided into forty-one (41) numbered precincts, being precincts one (1) through forty-one (41), inclusive, as hereinafter described, some of which said precincts are further subdivided into voting districts which are designated and referenced by alphanumeric designations consisting of a number representing the precinct within which such voting district is found and a separate letter of the alphabet designating each voting district located therein. In those precincts consisting of only one (1) voting district, the letter of the alphabet designating a separate voting district may optionally be included or omitted.
3. The numeric and alphanumeric designations of the precincts and voting districts referred to herein, and the boundary descriptions of each, are hereby established and designated as follows, to-wit:

Precinct 1, Voting District 1A

The boundary is: Beginning at a point where Wehapa Drive intersects County Road 41, thence follow County Road 41 southwesterly to its intersection with an Alabama Power Company transmission line. Thence move northwesterly along said transmission line to its intersection with the boundary of Jefferson County. Thence follow said boundary northeasterly to a point where the boundaries of Shelby, Jefferson, and Saint Clair counties intersect. Thence follow the Saint Clair County boundary southeasterly to its intersection with the ridgeline of Double Oak Mountain. Thence move southwesterly along said ridgeline to its intersection with State Route 25. Thence travel southwesterly along State Route 25 to its intersection with Lakeview Circle. Thence move southwesterly along said circle taking the northern split to its intersection with the ridgeline of Double

Oak Mountain. Thence follow said ridgeline southwesterly to its intersection with an Alabama Power Company transmission line, bypassing two similar transmission lines. Thence move northerly along said transmission line to its intersection with Shoal Creek. Thence meander southwesterly along said creek to its intersection with Wehapa Circle. Thence follow said circle southwesterly to its intersection with Wehapa Drive. Thence head westerly along said drive to the point of beginning.

Precinct 2, Voting District 2A

The boundary is: Beginning at a point where the ridgeline of Double Oak Mountain intersects the boundary of Saint Clair County, thence move along the boundary of Saint Clair County easterly to its intersection with Wolf Creek. Thence meander southerly along said creek to its confluence with Kelley Creek. Thence meander southwesterly along Kelley Creek to its confluence with Bear Creek. Thence meander southwesterly along Bear Creek to its confluence with Hurricane Creek. Thence continue westerly along Bear Creek to its confluence with Yellow Branch. Thence meander southwesterly along said branch to its intersection with an Alabama Power Company transmission line. Thence move southeasterly along said transmission line to its intersection with Muddy Prong. Thence meander southwesterly along said stream to its intersection with an Alabama Power Company transmission line, bypassing one similar transmission line. Thence move northerly along said transmission line to its intersection with the ridgeline of Double Oak Mountain. Thence follow said ridgeline northeasterly to its intersection with Lakeview Circle. Thence move northeasterly along said circle taking the northern split to its intersection with State Route 25. Thence travel northeasterly along State Route 25 to its intersection with the ridgeline of Double Oak Mountain. Thence follow said ridgeline northeasterly to the point of beginning.

Precinct 3, Voting District 3A

The boundary is: Beginning at a point where Bear Creek and Hurricane Creek intersect, thence meander southwesterly along Hurricane Creek to its intersection with the Norfolk Southern Railroad. Thence proceed along said railroad northwesterly to its intersection with County Road 469. Thence head southwesterly along County Road 469 to its intersection with State Route 25. Thence travel along State Route 25 southerly to its intersection with County Road 55. Thence follow County Road 55 southwesterly to its intersection with an Alabama Power Company transmission line. Thence move northwesterly along said transmission line to its intersection with Muddy Prong. Thence continue northwesterly along said transmission line to its intersection with Yellow Branch. Thence meander northeasterly along said branch to its confluence with Bear Creek. Thence meander easterly along said creek to the point of beginning.

Precinct 3, Voting District 3B

The boundary is: Beginning at a point where Bear Creek and Hurricane Creek intersect, thence meander northeasterly along Bear Creek to its confluence with Kelley Creek. Thence meander northeasterly along Kelley Creek to its intersection with an unnamed road. Thence move southerly along said unnamed road to its intersection with County Road 483. Thence follow County Road 483 southwesterly to its intersection with an unnamed road. Thence move westerly along said unnamed road to its intersection with an Alabama Power Company transmission line. Thence head southeasterly along said transmission line to its intersection with County Road 467. Thence move southwesterly along County Road 467 to its intersection with a gas pipeline. Thence follow said pipeline southwesterly to its intersection with an unnamed road. Thence head along said unnamed road northwesterly to its intersection with Colleton Forest Way. Thence follow said way westerly to its intersection with Colleton Lake Road. Thence proceed westerly along said road to its intersection with Hall Thompson Lane. Thence travel northwesterly along said lane to its intersection with County Road 55. Thence follow County Road 55 northeasterly to its intersection with State Route 25. Thence travel along State Route 25 northerly to its intersection with County Road 469. Thence head northeasterly along County Road 469 to its intersection with the Norfolk Southern Railroad. Thence proceed along said railroad southeasterly to its intersection with Hurricane Creek. Thence meander northeasterly along said creek to the point of beginning.

Precinct 4, Voting District 4A

The boundary is: Beginning at a point which is the convergence of the boundaries of Shelby, Saint Clair, and Talladega counties, meander southwesterly along the boundary of Talladega County following primarily the Coosa River to its confluence with Locust Creek. Thence meander northwesterly along said creek to its intersection with the city limits of Vincent. Thence move northwesterly along said city limits to its intersection with County Road 83. Thence travel northwesterly along County Road 83 to its intersection with Blue Springs Road. Thence head northwesterly along said road to its intersection with a gas pipeline. Thence head northeasterly along said pipeline to its intersection with County Road 467. Thence move northeasterly along County Road 467 to its intersection with an Alabama Power Company transmission line. Thence head northwesterly along said transmission line to its intersection with an unnamed road. Thence move easterly along said unnamed road to its intersection with County Road 483. Thence follow County Road 483 northeasterly to its intersection with an unnamed road. Thence move northerly along said unnamed road to its intersection with Kelley Creek. Thence meander southeasterly along said creek to its confluence with Wolf Creek. Thence meander northerly along Wolf Creek to its intersection with the boundary of Saint Clair County. Thence follow the boundary of Saint Clair County southeasterly to the point of beginning.

Precinct 5, Voting District 5A

The boundary is: Beginning at a point which is the intersection of the boundary of Talladega County and Locust Creek, meander southwesterly along the boundary of Talladega County following the Coosa River to its confluence with Yellowleaf Creek. Thence meander northwesterly along said creek to its confluence with Carter Branch. Thence meander southwesterly along said branch to its intersection with an Alabama Power Company transmission line, bypassing one similar transmission line. Thence move northwesterly along said transmission line to its intersection with a gas pipeline. Thence travel northeasterly along said pipeline to its intersection with United States Highway 280. Thence proceed southeasterly along United States Highway 280 to its intersection with County Road 280. Thence move northwesterly along County Road 280 to its intersection with Deerwood Lake Drive. Thence travel northerly along said drive to its intersection with a gas pipeline. Thence head northeasterly along said pipeline to its intersection with County Road 83. Thence travel southeasterly along County Road 83 to its intersection with the city limits of Vincent. Thence move southeasterly along said city limits to its intersection with Locust Creek. Thence meander southeasterly along said creek to the point of beginning.

Precinct 6, Voting District 6A

The boundary is: Beginning at a point which is the intersection with County Road 55 and Hall Thompson Lane, thence travel southeasterly along said lane to its intersection with Colleton Lake Road. Thence proceed easterly along said road to its intersection with Colleton Forest Way. Thence move easterly along said way to its intersection with an unnamed road. Thence follow southeasterly along said unnamed road to its intersection with a gas pipeline. Thence head northeasterly along said pipeline to its intersection with Blue Springs Road. Thence head southeasterly along said road to its intersection with County Road 83. Thence travel southeasterly along County Road 83 to its intersection with a gas pipeline. Thence head southwesterly along said pipeline to its intersection with Deerwood Lake Drive. Thence travel southerly along said drive to its intersection with County Road 280. Thence move southeasterly along County Road 280 to its intersection with United States Highway 280. Thence proceed northwesterly along United States Highway 280 to its intersection with a gas pipeline. Thence travel southwesterly along said pipeline to its intersection with an Alabama Power Company transmission line, bypassing one similar transmission line. Thence move northwesterly along said transmission line to its intersection with County Road 55. Thence follow County Road 55 northeasterly to the point of beginning.

Precinct 6, Voting District 6B

The boundary is: Beginning at a point which is the intersection of United States Highway 280 and an Alabama Power Company transmission line just west of

County Road 51, proceed northerly along said transmission line to its intersection with an unnamed creek. Thence meander easterly along said unnamed creek to its confluence with Muddy Prong. Thence meander northeasterly along Muddy Prong to its intersection with an Alabama Power Company transmission line, bypassing two similar transmission lines. Thence move southeasterly along said transmission line to its intersection with County Road 55. Thence follow County Road 55 southwesterly to its intersection with an Alabama Power Company transmission line, bypassing a similar transmission line. Thence move southeasterly along said transmission line to its intersection with United States Highway 280. Thence proceed westerly along United States Highway 280 to the point of beginning.

Precinct 6, Voting District 6C

The boundary is: Beginning at a point which is the intersection of United States Highway 280 and Little Creek proceed along United States Highway 280 easterly to its intersection with an Alabama Power Company transmission line just east of County Road 55. Thence move southeasterly along said transmission line, bypassing a gas pipeline, to its intersection with an unnamed road. Thence proceed southwesterly along said unnamed road to its intersection with County Road 51 and Jackson Farm Road. Thence travel southwesterly along Jackson Farm Road to its intersection with an Alabama Power Company transmission line. Thence move westerly along said transmission line to its intersection with South Fork Yellowleaf Creek. Thence meander northeasterly along said creek to its confluence with North Fork Yellowleaf Creek. Thence meander northwesterly along said creek to its confluence with Little Creek. Thence meander northerly along said creek to the point of beginning.

Precinct 7, Voting District 7A

The boundary is: Beginning at a point which is the intersection of United States Highway 280 and County Road 280, proceed easterly along United States Highway 280 to its intersection with Little Creek. Thence meander southerly along said creek to its confluence with North Fork Yellowleaf Creek. Thence meander southeasterly along said creek to its confluence with South Fork Yellowleaf Creek. Thence meander southwesterly along said creek to its confluence with Weaver Creek. Thence meander southerly along said creek to its intersection with an Alabama Power Company transmission line. Thence move northwesterly along said transmission line to its intersection with County Road 47. Thence head southwesterly along County Road 47 to its intersection with County Road 69. Thence proceed northwesterly along County Road 69 to its intersection with an Alabama Power Company transmission line. Thence move northwesterly along said transmission line to its intersection with South Fork Yellowleaf Creek. Thence meander southwesterly along said creek to its confluence with Beech Branch. Thence meander northwesterly along said branch

to its confluence with Brown Branch. Thence meander northerly along said branch to its intersection with a gas pipeline. Thence proceed westerly along said pipeline to the ridgeline of Double Mountain. Thence follow the ridgeline northeasterly to its intersection with County Road 280. Thence move easterly along County Road 280 to the point of beginning.

Precinct 8, Voting District 8A

The boundary is: Beginning at a point which is the intersection of United States Highway 280 and County Road 280, proceed westerly along County Road 280 to its intersection with the ridgeline of Double Mountain. Thence follow said ridgeline southwesterly to its intersection with County Road 36. Thence move northwesterly along County Road 36 to its intersection with the city limits of Pelham. Thence head westerly along said city limits to its intersection with the city limits of Chelsea. Thence follow said city limits westerly to its intersection with the boundary of Oak Mountain State Park. Thence proceed northeasterly along said boundary to its intersection with the ridgeline of Oak Mountain. Thence move northeasterly along said ridgeline to its intersection with United States Highway 280. Thence travel southeasterly along United States Highway 280 to the point of beginning.

Precinct 9, Voting District 9A

The boundary is: Beginning at a point which is the intersection of United States Highway 280 and State Route 119 proceed along United States Highway 280 southerly to its intersection with the ridgeline of Oak Mountain. Thence move southwesterly along said ridgeline to its intersection with the boundary of Oak Mountain State Park. Thence proceed southwesterly along said boundary to its intersection with Peavine Falls Road. Thence follow said road northerly to its intersection with Terrace Drive. Thence travel northeasterly along said drive to its intersection with John Findley Drive. Thence proceed along said drive northeasterly to its intersection with Oak Mountain Lake Road. Thence head northwesterly along said road to its intersection with State Route 119. Thence follow State Route 119 northeasterly to the point of beginning.

Precinct 10, Voting District 10A

The boundary is: Beginning at a point which is the intersection of United States Highway 280 and an Alabama Power Company transmission line just west of County Road 51, proceed along United States Highway 280 northwesterly to its intersection with Bowling Drive. Thence move northeasterly along said drive to its intersection with the city limits of Hoover. Thence follow northeasterly said city limits to its intersection with County Road 41 just south of Farmhouse Road. Thence travel southwesterly along County Road 41 to its intersection with Double Oak Way. Thence move southeasterly along said way to its intersection with an

unnamed road. Thence proceed northeasterly along said unnamed road to its intersection with the ridgeline of Double Oak Mountain. Thence follow said ridgeline northeasterly to its intersection with an Alabama Power Company transmission line, bypassing a similar transmission line. Thence move southerly along said transmission line to its intersection with Muddy Prong. Thence meander southwesterly along Muddy Prong to its confluence with an unnamed creek. Thence meander westerly along said unnamed creek to its intersection with an Alabama Power Company transmission line. Thence move southerly along said transmission line to the point of beginning.

Precinct 11, Voting District 11A

The boundary is: Beginning at a point where the city limits of Hoover and County Road 41 intersect just south of Farmhouse Road, thence travel northeasterly along County Road 41 to its intersection with the city limits of Hoover just north of Greystone Cove Drive. Thence proceed northeasterly along said city limits to its intersection with the boundary of Jefferson County. Thence follow said boundary northeasterly to its intersection with an Alabama Power Company transmission line. Thence move southeasterly along said transmission line to its intersection with County Road 41. Thence follow County Road 41 northeasterly to its intersection with Wehapa Drive. Thence travel easterly along said drive to its intersection with Wehapa Circle. Thence move northeasterly along said circle to its intersection with Shoal Creek. Thence meander northeasterly along said creek to its intersection with an Alabama Power Company transmission line. Thence move southerly along said transmission line to its intersection with the ridgeline of Double Oak Mountain. Thence follow said ridgeline southwesterly to its intersection with an unnamed road. Thence proceed southwesterly along said unnamed road to its intersection with Double Oak Way. Thence move northwesterly along said way to its intersection with County Road 41. Thence travel northeasterly along County Road 41 to the point of beginning.

Precinct 12, Voting District 12A

The boundary is: Beginning at a point where the city limits of Hoover and the ridgeline of Oak Mountain intersect, thence proceed southwesterly along said city limits to its intersection with County Road 41 just north of Greystone Cove Drive. Thence travel southwesterly along County Road 41 to its intersection with the city limits of Hoover just south of Farmhouse Road. Thence follow southwesterly said city limits to its intersection with the ridgeline of Oak Mountain. Thence follow northeasterly along said ridgeline mainly using Brae Trail and Greystone Crest to the point of beginning.

Precinct 13, Voting District 13A

The boundary is: Beginning at a point where State Route 119 intersects the

boundary of Jefferson County, thence follow said boundary easterly to its intersection with the city limits of Hoover near the ridgeline of Oak Mountain. Thence proceed southwesterly along said city limits to its intersection with the ridgeline of Oak Mountain. Thence follow southwesterly along said ridgeline mainly using Greystone Crest and Brae Trail to its intersection with the city limits of Hoover. Thence follow southwesterly said city limits to its intersection with Bowling Drive. Thence move southwesterly along said drive to its intersection with United States Highway 280. Thence proceed northwesterly along United States Highway 280 to its intersection with State Route 119. Thence travel northeasterly along State Route 119 to the point of beginning.

Precinct 14, Voting District 14A

The boundary is: Beginning at a point where Cahaba Beach Road intersects the boundary of Jefferson County, thence follow northeasterly along said boundary to its intersection with State Route 119. Thence move southwesterly along State Route 119 to its intersection with United States Highway 280. Thence proceed westerly along United States Highway 280 to its intersection with Cahaba Beach Road. Thence follow said road northwesterly to the point of beginning.

Precinct 15, Voting District 15A

The boundary is: Beginning at a point which is the intersection of United States Highway 280 and State Route 119 follow State Route 119 southwesterly to its intersection with Oak Mountain Lake Road. Thence continue southwesterly along State Route 119 to its intersection with County Road 14. Thence proceed along County Road 14 northwesterly to its intersection with Sunny Meadows Drive. Thence move northwesterly along said drive to its intersection with Longleaf Lane. Thence proceed westerly along said lane to its intersection with Willow Way. Thence travel northerly along said way to its intersection with Hickory Ridge Drive. Thence follow said drive northwesterly to its intersection with Meadow Brook Road. Thence proceed northeasterly along said road to its intersection with Meadow Drive. Thence head northerly along said drive to its intersection with County Road 17. Thence travel northeasterly along County Road 17 to its intersection with Inverness Center Drive. Thence move northwesterly along said drive to its intersection with Inverness Center Place. Thence proceed northwesterly along said place to its intersection with Inverness Parkway. Thence head along said parkway northeasterly to its intersection with United States Highway 280. Thence travel northwesterly along United States Highway 280 to its intersection with the boundary of Jefferson County. Thence follow said boundary northeasterly to its intersection with Cahaba Beach Road. Thence follow said road southeasterly to United States Highway 280. Thence proceed along United States Highway 280 easterly to the point of beginning.

Precinct 16, Voting District 16A

The boundary is: Beginning at a point which is the intersection of County Road 29 and County Road 17, thence follow County Road 17 northeasterly to its intersection with Meadow Drive. Thence head southerly along said drive to its intersection with Meadow Brook Road. Thence proceed southwesterly along said road to its intersection with Hickory Ridge Drive. Thence follow said drive southeasterly to its intersection with Willow Way. Thence travel southerly along said way to its intersection with Longleaf Lane. Thence head easterly along said lane to its intersection with Sunny Meadows Drive. Thence move southeasterly along said drive to its intersection with County Road 14. Thence proceed southeasterly along County Road 14 to its intersection with State Route 119. Thence move northeasterly along State Route 119 to its intersection with Oak Mountain Lake Road. Thence head southeasterly along said road to its intersection with John Findley Drive. Thence proceed along said drive southwesterly to its intersection with State Park Road. Thence move along said road northwesterly to its intersection with Interstate 65. Thence travel northeasterly along Interstate 65 to its intersection with State Route 119. Thence follow State Route 119 southwesterly to its intersection with United States Highway 31. Thence proceed northwesterly along United States Highway 31 to its intersection with State Route 261 and County Road 17. Thence head northeasterly along County Road 17 to its intersection with the city limits of Hoover, just southwest of Indian Lake Drive. Thence move southeasterly along said city limits to its intersection with the city limits of Indian Springs Village. Thence follow said city limits northeasterly to its intersection with the ridgeline of New Hope Mountain, just north of Mountain Park Circle. Thence proceed northeasterly along said ridgeline to its intersection with County Road 29. Thence follow County Road 29 northwesterly to the point of beginning.

Precinct 17, Voting District 17A

The boundary is: Beginning at a point which is the intersection of the boundary of Jefferson County and United States Highway 280, thence move southeasterly along United States Highway 280 to its intersection with Inverness Parkway. Thence proceed along said parkway southwesterly to its intersection with Inverness Center Place. Thence head southeasterly along said place to its intersection with Inverness Center Drive. Thence move southeasterly along said drive to its intersection with County Road 17. Thence head southwesterly along County Road 17 to its intersection with County Road 29. Thence follow County Road 29 northerly to its intersection with the boundary of Jefferson County. Thence proceed along said boundary northeasterly to the point of beginning.

Precinct 18, Voting District 18A

The boundary is: Beginning at a point which is the intersection of Interstate 65

and the boundary of Jefferson County, thence travel northeasterly along said boundary to its intersection with County Road 29. Thence head southerly along County Road 29 to its intersection with County Road 17. Thence head southwesterly along County Road 17 to its intersection with Interstate 65. Thence travel northerly along Interstate 65 to the point of beginning.

Precinct 18, Voting District 18B

The boundary is: Beginning at a point which is the intersection of County Road 17 and County Road 29, thence follow County Road 29 southeasterly to its intersection with the ridgeline of New Hope Mountain. Thence proceed southwesterly along said ridgeline to its intersection with the city limits of Indian Springs Village just north of Mountain Park Circle. Thence move along said city limits southwesterly to its intersection with the city limits of Hoover. Thence follow said city limits northwesterly to its intersection with County Road 17. Thence follow County Road 17 northeasterly to the point of beginning.

Precinct 19, Voting District 19A

The boundary is: Beginning at a point which is the intersection of Interstate 65 and the boundary of Jefferson County, thence travel southerly along Interstate 65 to its intersection with County Road 17. Thence head southwesterly along County Road 17 to its intersection with United States Highway 31 and State Route 261. Thence travel north along United States Highway 31 to its intersection with the city limits of Pelham and Hoover. Thence move along the city limits of Hoover southwesterly to a point, being the intersection of the boundary of Jefferson County and the city limits of Pelham, Helena, and Hoover. Thence move along said boundary northeasterly to the point of beginning.

Precinct 20, Voting District 20A

The boundary is: Beginning at a point which is the intersection of United States Highway 31, State Route 261, and County Road 17, thence follow State Route 261 southwesterly to its intersection with the city limits of Pelham and Helena. Thence move along said city limits northwesterly to a point, being the intersection of the boundary of Jefferson County and the city limits of Pelham, Helena, and Hoover. Thence move along the city limits of Hoover northeasterly to its intersection with United States Highway 31. Thence travel south along United States Highway 31 to the point of beginning.

Precinct 20, Voting District 20B

The boundary is: Beginning at a point which is the intersection of United States Highway 31, State Route 261, and County Road 17, thence proceed southeasterly along United States Highway 31 to its intersection with State Route 119. Thence

continue along United States Highway 31 southwesterly to its intersection with Cahaba Valley Creek. Thence meander southwesterly along said creek to its confluence with Buck Creek. Thence meander westerly along Buck Creek to the city limits of Pelham and Helena. Thence follow said city limits northerly to its intersection with County Road 105. Thence travel northerly along County Road 105 to its intersection with State Route 261. Thence follow State Route 261 northeasterly to the point of beginning.

Precinct 20, Voting District 20C

The boundary is: Beginning at a point which is the intersection of State Route 119 and Interstate 65, thence travel along Interstate 65 southwesterly to its intersection with County Road 52. Thence move along County Road 52 northwesterly to its intersection with United States Highway 31. Thence head north along United States Highway 31 to its intersection with County Road 52. Thence proceed west along County Road 52 to its intersection with CSX Railroad. Thence follow said railroad south to its intersection with the city limits of Alabaster and Pelham. Thence move northwesterly along the city limits of Pelham to a point, which is the intersection of the city limits of Helena, Pelham, and Alabaster. Thence move northerly along the city limits of Helena and Pelham to its intersection with County Road 52. Thence continue along said city limits north to its intersection with Buck Creek. Thence meander easterly along said creek to its confluence with Cahaba Valley Creek. Thence meander northeasterly along Cahaba Valley Creek to its intersection with United States Highway 31. Thence proceed northeasterly along United States Highway 31 to its intersection with State Route 119. Thence follow State Route 119 northeasterly to the point of beginning.

Precinct 20, Voting District 20D

The boundary is: Beginning at a point which is the intersection of the city limits of Alabaster and Pelham and the CSX Railroad, thence follow said railroad north to its intersection with County Road 52. Thence proceed east along County Road 52 to its intersection with United States Highway 31. Thence head south along United States Highway 31 to its intersection with County Road 52. Thence move along County Road 52 southeasterly to its intersection with Interstate 65. Thence travel south along Interstate 65 to its intersection with the city limits of Pelham and Alabaster. Thence follow said city limits westerly to the point of beginning.

Precinct 20, Voting District 20E

The boundary is: Beginning at a point being the intersection of United States Highway 31 and Interstate 65, thence travel northerly along Interstate 65 to its

intersection with State Park Road. Thence move along said road southeasterly to its intersection with John Findley Drive. Thence proceed along said drive northeasterly to its intersection with Terrace Drive. Thence travel southwesterly along said drive to its intersection with Peavine Falls Road. Thence follow said road southerly to its intersection with the boundary of Oak Mountain State Park. Thence proceed northeasterly along said boundary to its intersection with the city limits of Chelsea. Thence follow said city limits easterly to its intersection with the city limits of Pelham. Thence head easterly along said city limits to its intersection with County Road 36. Thence move southeasterly along County Road 36 to its intersection with the ridgeline of Double Mountain. Thence follow said ridgeline southwesterly to its intersection with a gas pipeline. Thence move easterly along said pipeline to its intersection with Brown Branch. Thence meander southerly along said branch to its confluence with Beech Branch. Thence meander southeasterly along said branch to its confluence with South Fork Yellowleaf Creek. Thence meander easterly along said creek to its intersection with the city limits of Pelham. Thence move southwesterly along said city limits to its intersection with the ridgeline of Double Mountain. Thence follow said ridgeline southwesterly to its intersection with Fulton Lake Road. Thence head southwesterly along said road to its intersection with United States Highway 31. Thence proceed northwesterly along United States Highway 31 to the point of beginning.

Precinct 21, Voting District 21A

The boundary is: Beginning at a point, being the intersection of the boundary of Jefferson County and the city limits of Pelham, Helena, and Hoover, thence move southeasterly along the city limits of Pelham and Helena to its intersection with State Route 261. Thence follow State Route 261 southwesterly to its intersection with County Road 105. Thence travel southerly along County Road 105 to its intersection with the city limits of Pelham and Helena. Thence follow said city limits southerly to its intersection with Buck Creek. Thence continue southerly along said city limits to its intersection with County Road 52. Thence proceed along County Road 52 northwesterly to its intersection with County Road 95. Thence head southerly along County Road 95 to its intersection with County Road 58. Thence move northwesterly along County Road 58 to its intersection with County Road 17. Thence go southerly along County Road 17 to its intersection with Beaver Dam Creek. Thence meander northwesterly along said creek to its confluence with the Cahaba River. Thence meander northeasterly along said river to its intersection with the boundary line of Jefferson County. Thence move easterly along said boundary to the point of beginning.

Precinct 21, Voting District 21B

The boundary is: Beginning at a point which is the intersection of County Road 17 and County Road 58, thence proceed along County Road 58 southeasterly to its

intersection with County Road 95. Thence travel northerly along County Road 95 to its intersection with County Road 52. Thence move along County Road 52 southeasterly to its intersection with the city limits of Helena and Pelham. Thence follow said city limits southerly to a point, which intersects the city limits of Helena, Pelham, and Alabaster. Thence proceed southwesterly along the city limits of Helena to its intersection with County Road 17. Thence head northerly along County Road 17 to the point of beginning.

Precinct 22, Voting District 22A

The boundary is: Beginning at a point which is the intersection of the boundary of Jefferson County and the Cahaba River, thence meander southwesterly along said river to its intersection with the boundary line of Bibb County. Thence head northerly along said boundary line to a point, which is the convergence of the boundaries of Shelby, Bibb, and Jefferson counties. Thence move northeasterly along the boundary of Jefferson County to the point of beginning.

Precinct 23, Voting District 23A

The boundary is: Beginning at a point which is the confluence of the Cahaba River and Beaver Dam Creek, thence meander southeasterly along said creek to its intersection with County Road 17. Thence move southerly along County Road 17 to its intersection with an unnamed road just south of County Road 12. Thence proceed southwesterly along said road to its intersection with Setco Mine Road. Thence travel northerly along said road to its intersection with an Alabama Power Company transmission line. Thence move northwesterly along said transmission line to its intersection with County Road 270. Thence proceed southwesterly along County Road 270 to its intersection with Piney Woods Creek. Thence meander northwesterly along said creek to its confluence with the Cahaba River. Thence meander northeasterly along said river to the point of beginning.

Precinct 24, Voting District 24A

The boundary is: Beginning at a point which is the intersection of the CSX Railroad and County Road 44, thence proceed northwesterly along County Road 44 to its intersection with County Road 264. Thence head westerly along County Road 44 to its intersection with County Road 17. Thence move northerly along County Road 17 to its intersection with the city limits of Helena. Thence proceed northeasterly along said city limits to a point, which intersects the city limits of Helena, Pelham, and Alabaster. Thence move southeasterly along the city limits of Pelham to its intersection with the CSX Railroad. Thence follow said railroad southerly, taking the eastern track where said railroad forks, to the point of beginning.

Precinct 25, Voting District 25A

The boundary is: Beginning at a point which is the intersection of the city limits of Alabaster and Pelham and the CSX Railroad, thence follow said city limits easterly to its intersection with Interstate 65. Thence travel southerly along Interstate 65 to its intersection with United States Highway 31. Thence head southeasterly along United States Highway 31 to its intersection with the CSX Railroad. Thence move northwesterly along said railroad to the point of beginning.

Precinct 26, Voting District 26A

The boundary is: Beginning at a point which is the intersection of State Route 119 and the CSX Railroad, thence head along State Route 119 southwesterly to its intersection with County Road 264. Thence proceed northwesterly along County Road 264 to its intersection with County Road 44. Thence head southeasterly along County Road 44 to its intersection with the CSX Railroad. Thence follow said railroad southeasterly to the point of beginning.

Precinct 26, Voting District 26B

The boundary is: Beginning at a point which is the intersection of County Road 17 and County Road 44, thence head easterly along County Road 44 to its intersection with County Road 264. Thence proceed southeasterly along County Road 264 to its intersection with State Route 119. Thence follow State Route 119 southwesterly to its intersection with County Road 26. Thence travel westerly along County Road 26 to its intersection with County Road 17. Thence head northeasterly along County Road 17 to the point of beginning.

Precinct 27, Voting District 27A

The boundary is: Beginning at a point which is the intersection of State Route 119 and the CSX Railroad, thence travel southeasterly along said railroad to its intersection with United States Highway 31. Thence proceed southeasterly along United States Highway 31 to its intersection with Oak Tree Lane. Thence proceed westerly along said lane to its intersection with the CSX Railroad. Thence head southerly along said railroad to its intersection with County Road 22. Thence move southwesterly along County Road 22 to its intersection with Interstate 65. Thence proceed northwesterly along Interstate 65 to its intersection with County Road 87. Thence head southerly along County Road 87 to its intersection with County Road 12. Thence travel northwesterly along County Road 12 to its intersection with State Route 119. Thence follow State Route 119 northerly to the point of beginning.

Precinct 27, Voting District 27B

The boundary is: Beginning at a point which is the intersection of County Road 17 and County Road 26, thence head easterly along County Road 26 to its intersection with State Route 119. Thence follow State Route 119 southerly to its intersection with County Road 80. Thence travel northwesterly along County Road 80 to its intersection with County Road 12. Thence head westerly along County Road 12 to its intersection with County Road 17. Thence follow County Road 17 northerly to the point of beginning.

Precinct 28, Voting District 28A

The boundary is: Beginning at a point which is the intersection of County Road 17 and County Road 12, thence head easterly along County Road 12 to its intersection with County Road 80. Thence travel southeasterly along County Road 80 to its intersection with State Route 119. Thence follow State Route 119 northerly to its intersection with County Road 12. Thence travel southeasterly along County Road 12 to its intersection with County Road 87. Thence head northerly along County Road 87 to its intersection with Interstate 65. Thence proceed southeasterly along Interstate 65 to its intersection with County Road 22. Thence follow County Road 22 southwesterly to its intersection with County Road 12. Thence head southerly along County Road 12 to its intersection with County Road 84. Thence move southeasterly along County Road 84 to its intersection with Dry Creek. Thence meander southwesterly along said creek to its intersection with County Road 16. Thence proceed northwesterly along County Road 16 to its intersection with County Road 12. Thence follow County Road 12 southwesterly to its intersection with County Road 16. Thence head northerly along County Road 16 to its intersection with County Road 22. Thence proceed westerly along County Road 22 to its intersection with County Road 17. Thence head northerly along County Road 17 to the point of beginning.

Precinct 29, Voting District 29A

The boundary is: Beginning at a point which is the intersection of County Road 16 and County Road 12, thence follow County Road 12 southwesterly to its intersection with Overland Road. Thence head northwesterly along said road to its intersection with Hidden Valley Drive. Thence move along said drive northerly to its intersection with Overland Road. Thence go northwesterly along said road to its intersection with Shoal Creek. Thence meander southwesterly along said creek to its intersection with Island Street. Thence travel northeasterly along said street to its intersection with State Route 119. Thence move northeasterly along State Route 119 to its intersection with Wadsworth Street. Thence head northwesterly along said street to its intersection with Highland Street. Thence follow said street southwesterly to its intersection with Bloch Street. Thence move northwesterly along said street to its intersection with King

Street. Thence head northeasterly along said street to its intersection with County Road 15. Thence proceed southeasterly along County Road 15 to its intersection with State Route 119. Thence follow State Route 119 northeasterly to its intersection with an Alabama Power Company transmission line. Thence head westerly along said transmission line to its intersection with County Road 15. Thence proceed northerly along County Road 15 to its intersection with County Road 22. Thence follow County Road 22 easterly to its intersection with County Road 16. Thence proceed southerly along County Road 16 to the point of beginning.

Precinct 30, Voting District 30A

The boundary is: Beginning at a point which is the intersection of County Road 17 and County Road 22, thence head easterly along County Road 22 to its intersection with County Road 15. Thence proceed southerly along County Road 15 to its intersection with an Alabama Power Company transmission line. Thence head westerly along said transmission line to its intersection with King Creek. Thence meander along said creek northwesterly to its intersection with the Norfolk Southern Railroad. Thence go along said railroad southwesterly to its intersection with County Road 10. Thence move northwesterly along County Road 10 to its intersection with an unnamed road. Thence travel northeasterly along said road to its intersection with another unnamed road. Thence proceed northerly along said road to its intersection with another unnamed road. Thence move northwesterly along said road to its intersection with County Road 22. Thence proceed northeasterly along County Road 22 to its intersection with Setco Mine Road. Thence travel northerly along said road to its intersection with an unnamed road. Thence proceed northeasterly along said road to its intersection with County Road 17. Thence follow County Road 17 southerly to the point of beginning.

Precinct 31, Voting District 31A

The boundary is: Beginning at a point which is the intersection of the boundary of Bibb County and the Cahaba River, thence meander northeasterly along said river to its confluence with Piney Woods Creek. Thence meander southeasterly along said creek to its intersection with County Road 270. Thence proceed northeasterly along County Road 270 to its intersection with an Alabama Power Company transmission line. Thence move southeasterly along said transmission line to its intersection with Setco Mine Road. Thence travel southerly along said road to its intersection with County Road 22. Thence proceed southwesterly along County Road 22 to its intersection with an unnamed road. Thence move southeasterly along said road to its intersection with another unnamed road. Thence proceed southerly along said road to its intersection with another unnamed road. Thence move southwesterly along said road to its intersection with County Road 10. Thence move westerly along County Road 10 to its intersection with Pilgrim Rest

Road. Thence proceed southwesterly along said road to its intersection with the boundary of Bibb County. Thence head northwesterly along said boundary to the point of beginning.

Precinct 32, Voting District 32A

The boundary is: Beginning at a point which is the convergence of the boundaries of Shelby, Chilton, and Bibb Counties, thence move northwesterly along the boundary of Bibb County to its intersection with Shoal Creek. Thence meander northeasterly along said creek to its intersection with the city limits of Montevallo and Wilton. Thence head southeasterly along said city limits to its intersection with State Route 73. Thence move southerly along State Route 73 to its intersection with Wilson Branch. Thence meander southeasterly along said branch to its confluence with an unnamed creek. Thence meander southerly along said creek to its intersection with the boundary of Chilton County. Thence head southwesterly along said boundary to the point of beginning.

Precinct 33, Voting District 33A

The boundary is: Beginning at a point which is the intersection of the boundary of Bibb County and Pilgrim Rest Road, thence move northeasterly along said road to its intersection with County Road 10. Thence follow County Road 10 southeasterly to its intersection with the Norfolk Southern Railroad. Thence proceed along said railroad northeasterly to its intersection with King Creek. Thence meander along said creek southeasterly to its intersection with an Alabama Power Company transmission line. Thence head easterly along said transmission line to its intersection with State Route 119. Thence follow State Route 119 southwesterly to its intersection with County Road 15. Thence proceed northwesterly along County Road 15 to its intersection with King Street. Thence head southwesterly along said street to its intersection with Bloch Street. Thence move southeasterly along said street to its intersection with Highland Street. Thence follow said street northeasterly to its intersection with Wadsworth Street. Thence head southeasterly along said street to its intersection with State Route 119. Thence move southwesterly along State Route 119 to its intersection with Island Street. Thence travel southwesterly along said street to its intersection with Shoal Creek. Thence meander southeasterly along said creek to its intersection with Middle Street. Thence meander northeasterly along said creek to its intersection with Overland Road. Thence go southeasterly along said road to its intersection with Hidden Valley Drive. Thence move along said drive southerly to its intersection with Overland Road. Thence head southeasterly along said road to its intersection with County Road 12. Thence follow County Road 12 northeasterly to its intersection with County Road 16. Thence proceed southeasterly along County Road 16 to its intersection with County Road 23. Thence travel southerly along County Road 23 to its intersection with State Route 25. Thence move westerly along State Route 25 to its intersection with County

Road 89. Thence follow County Road 89 southeasterly to its intersection with the boundary of Chilton County. Thence head westerly along said boundary to its intersection with an unnamed creek. Thence meander northerly along said creek to its confluence with Wilson Branch. Thence meander northwesterly along said branch to its intersection with State Route 73. Thence proceed northerly along State Route 73 to its intersection with the city limits of Montevallo and Wilton. Thence head northwesterly along said city limits to its intersection with Shoal Creek. Thence meander southwesterly along said creek to its intersection with the boundary of Bibb County. Thence move northwesterly along said boundary to the point of beginning.

Precinct 34, Voting District 34A

The boundary is: Beginning at a point which is the intersection of the boundary of Chilton County and County Road 89, thence follow County Road 89 northwesterly to its intersection with State Route 25. Thence move easterly along State Route 25 to its intersection with County Road 23. Thence travel northerly along County Road 23 to its intersection with County Road 16. Thence proceed southeasterly along County Road 16 to its intersection with Dry Creek. Thence meander northeasterly along said creek to its intersection with County Road 84. Thence move northwesterly along County Road 84 to its intersection with County Road 12. Thence head northerly along County Road 12 to its intersection with County Road 22. Thence follow County Road 22 northeasterly to its intersection with Interstate 65. Thence proceed southeasterly along Interstate 65 to its intersection with County Road 67. Thence follow County Road 67 southwesterly to its intersection with United States Highway 31. Thence head southerly along United States Highway 31 to its intersection with the boundary of Chilton County. Thence head westerly along said boundary to the point of beginning.

Precinct 34, Voting District 34B

The boundary is: Beginning at a point which is the intersection of Hiawatha Road and the boundary of Chilton County, thence move westerly along said boundary to its intersection with United States Highway 31. Thence head northerly along United States Highway 31 to its intersection with County Road 67. Thence follow County Road 67 northeasterly to its intersection with Interstate 65. Thence travel northerly along Interstate 65 to its intersection with State Route 25. Thence follow State Route 25 northeasterly to its intersection with the Norfolk Southern Railroad. Thence proceed northeasterly along said railroad to its intersection with Leach Cemetery Road. Thence follow said road southeasterly to its intersection with County Road 86. Thence move southeasterly along County Road 86 to its intersection with Hiawatha Road. Thence proceed southwesterly along said road to the point of beginning.

Precinct 35, Voting District 35A

The boundary is: Beginning at a point which is the intersection of Oak Tree Lane, United States Highway 31, and an unnamed road, thence follow said unnamed road easterly to its intersection with another unnamed road. Thence follow said unnamed road northerly to its intersection with another unnamed road. Thence follow said unnamed road easterly to its intersection with Camp Branch. Thence meander southerly along said branch to its intersection with an unnamed road. Thence head northeasterly along said unnamed road to its intersection with another unnamed road. Thence move northerly along said unnamed road to its intersection with another unnamed road. Thence head easterly along said unnamed road to its intersection with another unnamed road. Thence move southerly along said unnamed road to its intersection with Landfill Road. Thence head southeasterly along said road to its intersection with State Route 70. Thence move along State Route 70 southwesterly to its intersection with an unnamed creek. Thence meander along said unnamed creek to its confluence with Camp Branch. Thence meander along said branch northwesterly to its intersection with State Route 70. Thence move along State Route 70 westerly to its intersection with United States Highway 31 and County Road 22. Thence move southwesterly along County Road 22 to its intersection with the CSX Railroad. Thence head northerly along said railroad to its intersection with Oak Tree Lane. Thence proceed easterly along said lane to the point of beginning.

Precinct 35, Voting District 35B

The boundary is: Beginning at a point which is the intersection of the CSX Railroad and County Road 22, thence move northeasterly along County Road 22 to its intersection with United States Highway 31 and State Route 70. Thence travel along State Route 70 easterly to its intersection with Camp Branch. Thence meander along said branch southeasterly to its intersection with State Route 25. Thence go northeasterly along State Route 25 to its intersection with Waxahatchee Creek. Thence meander southeasterly along said creek to its intersection with County Road 42. Thence follow County Road 42 westerly to its intersection with Coker Road. Thence travel southwesterly along said road to its intersection with Long Branch Creek. Thence meander along said creek westerly to its intersection with the Heart of Dixie Railroad. Thence head westerly along said railroad to its intersection with County Road 86. Thence move northwesterly along County Road 86 to its intersection with Leach Cemetery Road. Thence follow said road northwesterly to its intersection with the Norfolk Southern Railroad. Thence proceed southwesterly along said railroad to its intersection with State Route 25. Thence follow State Route 25 southwesterly to its intersection with Interstate 65. Thence travel northwesterly along Interstate 65 to its intersection with County Road 22. Thence move northeasterly along County Road 22 to the point of beginning.

Precinct 36, Voting District 36A

The boundary is: Beginning at a point being the intersection of the city limits of Pelham and South Fork Yellowleaf Creek, thence meander northeasterly along said creek to its intersection with an Alabama Power Company transmission line. Thence move southeasterly along said transmission line to its intersection with County Road 69. Thence head southeasterly along County Road 69 to its intersection with an unnamed road. Thence proceed southwesterly along said road turning into Maywood Road and continuing southwesterly to its intersection with Queen Road. Thence head southerly along said road to its intersection with County Road 34. Thence follow County Road 34 westerly to its intersection with an unnamed road. Thence move southerly along said road to its intersection with County Road 26. Thence proceed easterly along County Road 26 to its intersection with an unnamed creek. Thence meander southeasterly along said creek to its confluence with Big Creek. Thence meander southwesterly along said creek to its confluence with an unnamed creek. Thence meander southwesterly along said creek to its intersection with an unnamed road. Thence proceed southwesterly along said unnamed road to its intersection with another unnamed road. Thence move southerly along said unnamed road to its intersection with another unnamed road. Thence head southwesterly along said unnamed road to its intersection with Camp Branch. Thence meander northerly along said branch to its intersection with an unnamed road. Thence follow said unnamed road westerly to its intersection with another unnamed road. Thence follow said unnamed road westerly to its intersection with another unnamed road. Thence follow said unnamed road southerly to its intersection with another unnamed road. Thence follow said unnamed road westerly to its intersection with United States Highway 31. Thence proceed northwesterly along United States Highway 31 to its intersection with Fulton Lake Road. Thence head northeasterly along said road to its intersection with the ridgeline of Double Mountain. Thence follow said ridgeline northeasterly to its intersection with the city limits of Pelham. Thence move northeasterly along said city limits to the point of beginning.

Precinct 37, Voting District 37A

The boundary is: Beginning at a point which is the intersection of an Alabama Power Company transmission line and Weaver Creek, thence meander southwesterly along said creek to its intersection with an unnamed road. Thence move southeasterly along said unnamed road to its intersection with another unnamed road. Thence head southerly along said unnamed road to its intersection with another unnamed road. Thence travel southeasterly along said unnamed road to its intersection with another unnamed road. Thence follow said unnamed road southeasterly to its intersection with County Road 49. Thence move southerly along County Road 49 to its intersection with State Route 25. Thence move northeasterly along State Route 25 to its intersection with an unnamed creek. Thence meander southerly along said creek to its intersection with the Norfolk Southern Railroad. Thence follow said railroad southwesterly to its intersection with County Road 47. Thence head north along County Road 47 to its

intersection with Industrial Parkway. Thence move along Industrial Parkway southwesterly to its intersection with State Route 70. Thence stay on State Route 70 easterly to its intersection with the Norfolk Southern Railroad. Thence proceed southwesterly along said railroad to its intersection with County Road 97. Thence travel southwesterly along County Road 97 to its intersection with Shelby Springs Road. Thence follow said road southwesterly to its intersection with Camp Branch. Thence meander along said branch northwesterly to its confluence with an unnamed creek. Thence meander along said unnamed creek to its intersection with State Route 70. Thence travel along State Route 70 northeasterly to its intersection with Landfill Road. Thence move northwesterly along said road to its intersection with an unnamed road. Thence move northerly along said unnamed road to its intersection with another unnamed road. Thence travel northwesterly along said unnamed road to its intersection with an unnamed creek. Thence meander northeasterly along said creek to its confluence with Big Creek. Thence meander northeasterly along said creek to its confluence with an unnamed creek. Thence meander northwesterly along said creek to its intersection with County Road 26. Thence proceed westerly along County Road 26 to its intersection with an unnamed road. Thence move northerly along said road to its intersection with County Road 34. Thence follow County Road 34 easterly to its intersection with Queen Road. Thence head northerly along said road to its intersection with Maywood Road. Thence proceed northeasterly along said road turning into an unnamed road and continuing northeasterly to its intersection with County Road 69. Thence head southeasterly along County Road 69 to its intersection with County Road 47. Thence move northeasterly along County Road 47 to its intersection with an Alabama Power Company transmission line. Thence move southeasterly along said transmission line to the point of beginning.

Precinct 37, Voting District 37B

The boundary is: Beginning at a point where Beeswax Creek intersects State Route 145, thence follow State Route 145 southwesterly to its intersection with County Road 28. Thence move along County Road 28 westerly to its intersection with County Road 61. Thence proceed along County Road 61 southwesterly to its intersection with County Road 47. Thence follow County Road 47 northwesterly to its intersection with Waterworks Street in Columbiana. Thence head westerly along said street to its intersection with the Old State Route 25. Thence proceed along Old State Route 25 southwesterly to its intersection with State Route 25. Thence continue southwesterly along State Route 25 to its intersection with Camp Branch. Thence meander along said branch northwesterly to its intersection with Shelby Springs Road. Thence follow said road northeasterly to its intersection with County Road 97. Thence travel northeasterly along County Road 97 to its intersection with the Norfolk Southern Railroad. Thence proceed northeasterly along said railroad to its intersection with State Route 70. Thence stay on State Route 70 westerly to its intersection with Industrial Parkway. Thence move along said parkway northeasterly to its intersection with County Road 47. Thence head

southerly along County Road 47 to its intersection with the Norfolk Southern Railroad. Thence follow said railroad northeasterly to its intersection with an unnamed creek. Thence meander southerly along said unnamed creek to its confluence with Beeswax Creek. Thence meander southeasterly along said creek to the point of beginning.

Precinct 37, Voting District 37C

The boundary is: Beginning at a point which is the intersection of Waxahatchee Creek and State Route 25, thence go northeasterly along State Route 25 to its intersection with Old State Route 25. Thence proceed along Old State Route 25 northeasterly to its intersection with Waterworks Street in Columbiana. Thence head easterly along said street to its intersection with County Road 47. Thence follow County Road 47 southeasterly to its intersection with Beaver Creek Road. Thence move along Beaver Creek Road southwesterly to its intersection with Mud Creek. Thence meander southeasterly along said creek to its intersection with County Road 42. Thence follow County Road 42 westerly to its intersection with Waxahatchee Creek. Thence meander northwesterly along said creek to the point of beginning.

Precinct 38, Voting District 38A

The boundary is: Beginning at a point which is the intersection of an Alabama Power Company transmission line and Weaver Creek, thence meander northerly along said creek to its confluence with South Fork Yellowleaf Creek. Thence meander northeasterly along said creek to its intersection with an Alabama Power Company transmission line. Thence move southeasterly along said transmission line to its intersection with Jackson Farm Road. Thence travel northeasterly along said road to its intersection with County Road 51. Thence travel southeasterly along County Road 51 to its intersection with County Road 61. Thence proceed southwesterly along County Road 61 to its intersection with County Road 443. Thence move southerly along County Road 443 to its intersection with County Road 56. Thence head westerly along County Road 56 to its intersection with County Road 61. Thence proceed southwesterly along County Road 61 to its intersection with County Road 55. Thence move southerly along County Road 55 to its intersection with County Road 48. Thence follow County Road 48 easterly to its intersection with County Road 431. Thence head southerly along County Road 431 to its intersection with the Wilsonville City Limits, being also the quarter section line of Section 3 of Township 21 South, Range 1 East. Thence proceed west approximately 2000 feet and south approximately 2700 feet along said city limits, being said quarter section line and the dividing line between Sections 3 and 4 of said township and range to its intersection with State Route 25. Thence move westerly along State Route 25 to its intersection with County Road 5. Thence travel southerly along County Road 5 to its intersection with the Norfolk Southern Railroad. Thence follow said railroad southwesterly to its

intersection with an unnamed creek. Thence meander northerly along said creek to its intersection with State Route 25. Thence proceed southwesterly along State Route 25 to its intersection with County Road 49. Thence move northerly along County Road 49 to its intersection with an unnamed road. Thence follow said unnamed road northwesterly to its intersection with another unnamed road. Thence travel northwesterly along said unnamed road to its intersection with another unnamed road. Thence move northerly along said unnamed road to its intersection with another unnamed road. Thence move northwesterly along said unnamed road to its intersection with Weaver Creek. Thence meander northerly along said creek to the point of beginning.

Precinct 38, Voting District 38B

The boundary is: Beginning at a point which is the intersection of County Road 55 and County Road 48, thence move northerly along County Road 55 to its intersection with County Road 61. Thence travel northeasterly along County Road 61 to its intersection with County Road 56. Thence proceed easterly along County Road 56 to its intersection with Spearman Branch. Thence meander southeasterly along said branch to its confluence with Fourmile Creek. Thence meander westerly along said creek to its confluence with an unnamed creek. Thence meander southwesterly along said unnamed creek to its intersection with Largin Road. Thence move southerly along said road to its intersection with County Road 48. Thence follow County Road 48 westerly to the point of beginning.

Precinct 39, Voting District 39A

The boundary is: Beginning at a point which is the intersection of the boundary of Talladega County and Yellowleaf Creek, meander southwesterly along the boundary of Talladega County following the Coosa River to its confluence with Beeswax Creek. Thence meander northwesterly along said creek to its confluence with an unnamed creek. Thence meander northerly along said unnamed creek to its intersection with the Norfolk Southern Railroad. Thence follow said railroad easterly to its intersection with County Road 5. Thence travel north along County Road 5 to its intersection with State Route 25. Thence move east along State Route 25 to its intersection with the Wilsonville City Limits, being also the dividing line between Sections 3 and 4 of Township 21 South, Range 1 East. Thence travel north approximately 2700 feet and east approximately 2000 feet along said city limits, being said section line and quarter section line of said Section 3, to its intersection with County Road 431. Thence head northerly along County Road 431 to its intersection with County Road 48. Thence follow County Road 48 easterly to its intersection with Largin Road. Thence move northerly along said road to its intersection with an unnamed creek. Thence meander northeasterly along said unnamed creek to its confluence with Fourmile Creek. Thence meander easterly along said creek to its confluence with Spearman

Branch. Thence meander northwesterly along said branch to its intersection with County Road 56. Thence proceed southeasterly along County Road 56 to its intersection with County Road 443. Thence move northerly along County Road 443 to its intersection with County Road 61. Thence travel northeasterly along County Road 61 to its intersection with County Road 51. Thence head northwesterly along County Road 51 to its intersection with an unnamed road. Thence head northeasterly along said unnamed road to its intersection with an Alabama Power Company transmission line. Thence move northwesterly along said transmission line to its intersection with Carter Branch. Thence meander northeasterly along said branch to its confluence with Yellowleaf Creek. Thence meander southeasterly along said creek to the point of beginning.

Precinct 40, Voting District 40A

The boundary is: Beginning at a point which is the intersection of the boundary of Chilton County and Hiawatha Road, thence proceed northeasterly along said road to its intersection with County Road 86. Thence move northwesterly along County Road 86 to its intersection with the Heart of Dixie Railroad. Thence head easterly along said railroad to its intersection with Long Branch Creek. Thence meander along said creek easterly to its intersection with Coker Road. Thence head northeasterly along said road to its intersection with County Road 42. Thence follow County Road 42 easterly to its intersection with Mud Creek. Thence meander northwesterly along said creek to its intersection with Beaver Creek Road. Thence move along Beaver Creek Road northeasterly to its intersection with County Road 47. Thence follow County Road 47 southeasterly to its intersection with County Road 61. Thence proceed along County Road 61 northeasterly to its intersection with County Road 28. Thence move along County Road 28 easterly to its intersection with State Route 145. Thence follow State Route 145 northeasterly to its intersection with Beeswax Creek. Thence meander easterly along said creek to its intersection with the boundary of Talladega County. Thence meander southerly along the boundary of Talladega County following the Coosa River to its intersection with the right of way of an abandoned railroad, if extended. Thence follow said right of way southwesterly to its intersection with County Road 71. Thence head northeasterly along County Road 71 to its intersection with County Road 42. Thence move northwesterly along County Road 42 to its intersection with State Route 145. Thence proceed southwesterly along State Route 145 to its intersection with the boundary of Chilton County. Thence proceed northwesterly along said boundary to the point of beginning.

Precinct 41, Voting District 41A

The boundary is: Beginning at a point which is the intersection of the boundary of Chilton County and State Route 145, thence proceed northeasterly along State Route 145 to its intersection with County Road 42. Thence move southeasterly

along County Road 42 to its intersection with County Road 71. Thence head southwesterly along County Road 71 to its intersection with the right of way of an abandoned railroad. Thence follow said right of way, if extended, northeasterly to its intersection with the boundary of Talladega County. Thence following the Coosa River meander southerly along the boundaries of Talladega and Coosa Counties to a point, being the convergence of the boundaries of Shelby, Coosa, and Chilton counties. Thence meander along Waxahatchee Creek northwesterly being the boundary of Chilton County to the point of beginning.

4. A map depicting the geographical boundaries of each precinct and each voting district described above is attached hereto as Exhibit "A" and made part and parcel hereof.

5. The Shelby County Commission does hereby designate the places of holding elections in each of the precincts and voting districts herein established to be as designated and specified on Exhibit "B" attached hereto and by reference made part and parcel hereof as fully as if set out herein.

6. Beginning in the year 2004, each General Election, Primary Election, or Special Election called or held pursuant to the general laws of the State of Alabama or pursuant to the provisions of any local legislation adopted by the Alabama Legislature applicable to Shelby County shall be held and conducted in the places for holding elections designated in this Resolution and subject to and in full accord with the designation of precincts and voting districts herein. Places of voting shall be the same for all elections, whether Primary, General, or Special, or federal, state, district, or county, and shall be in accord with and as designated herein. Voting by absentee ballot shall be conducted as otherwise provided by law.

7. A copy of this Resolution and a description of the boundaries of each precinct and voting district shall be filed with the Judge of Probate of Shelby County who shall within five (5) days thereafter give notice of the same as required by law by publishing the same in a newspaper of general circulation published in said County and who shall also have the same posted by the Sheriff of Shelby County at the Courthouse and at two (2) other public places in each said voting district and in each said precinct. Such notice should describe the precinct by its number and should specify or identify the place therein where elections are to be held.

8. The Board of Registrars of Shelby County, Alabama shall by United States mail timely notify or attempt to notify each registered voter in Shelby County affected thereby of any change in his or her precinct or place of voting.

9. Subsequent to the adoption of this Resolution, the Shelby County Commission shall submit this Resolution and plan for preclearance pursuant to Section 5 of the Voting Rights Act, 42 U.S.A., Section 1973c, in accord with the provisions of law.

10. That the provisions of this Resolution are severable. If any portion hereof shall be declared invalid by any court of competent jurisdiction, such declaration shall not affect the remaining portions hereof.

11. Any prior Resolution or Ordinance of the Shelby County Commission or any predecessor thereto which is contrary to or inconsistent with the terms, provisions and conditions set out herein, shall be and the same is hereby repealed only to the extent that the same is contrary hereto or inconsistent herewith.

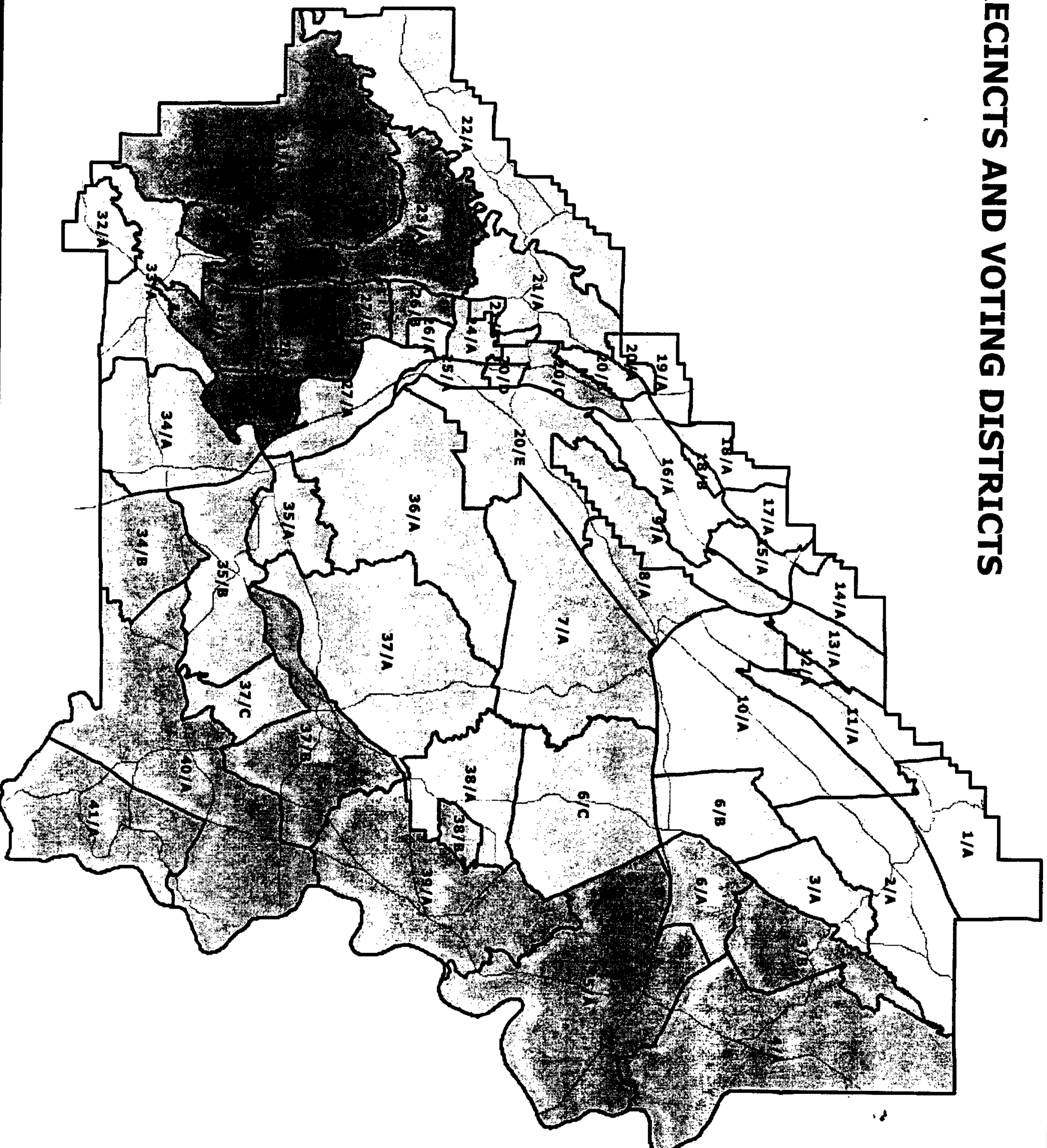
**This signature shall denote that this is a certified copy of
Resolution 03-12-22-04 passed at the Shelby County Commission
meeting December 22, 2003.**



Kim Reynolds, Administrative Assistant II
to the County Manager

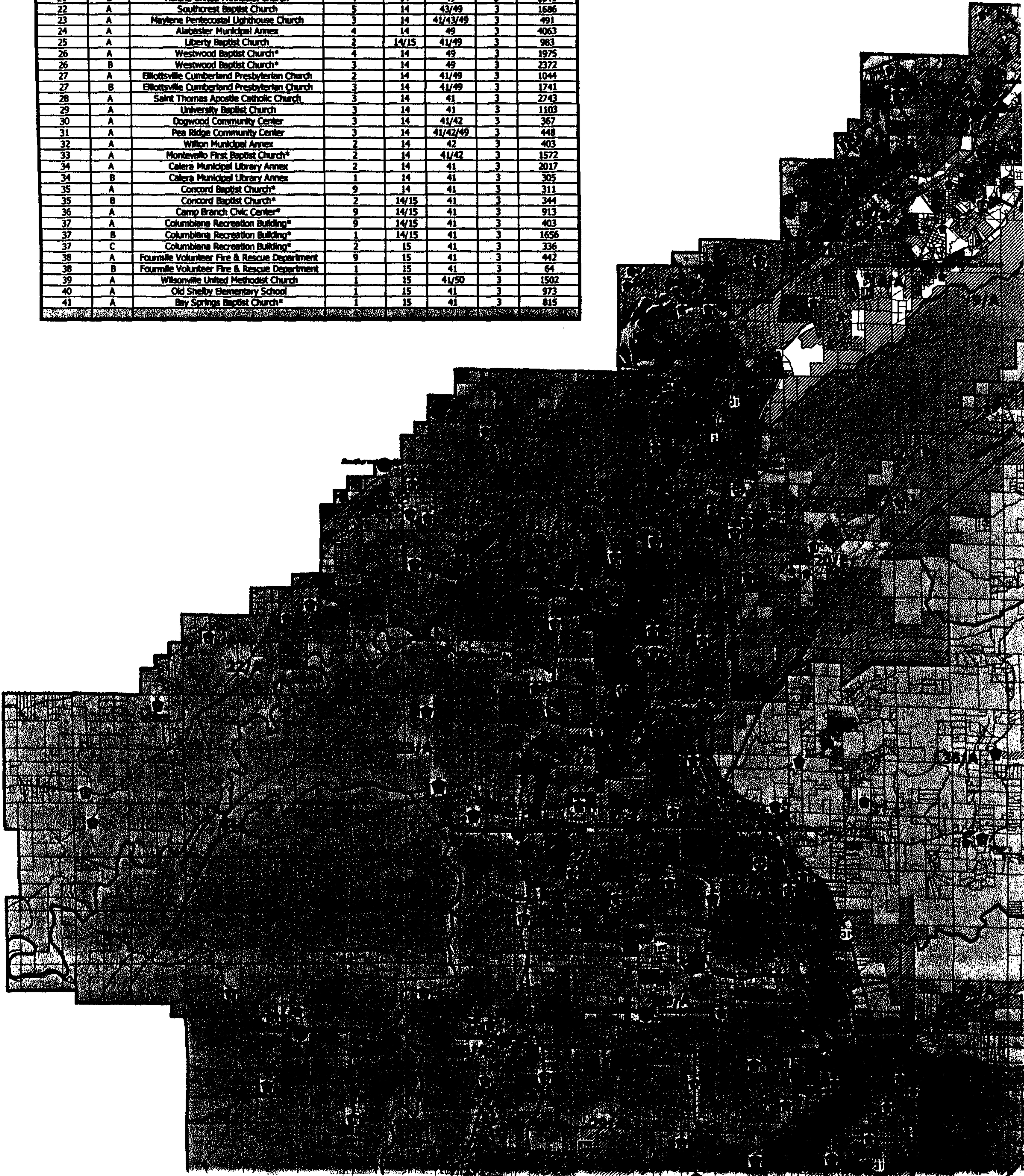
RECEIVED
JAN 12 2004
PROBATE JUDGE'S OFFICE

PRECINCTS AND VOTING DISTRICTS

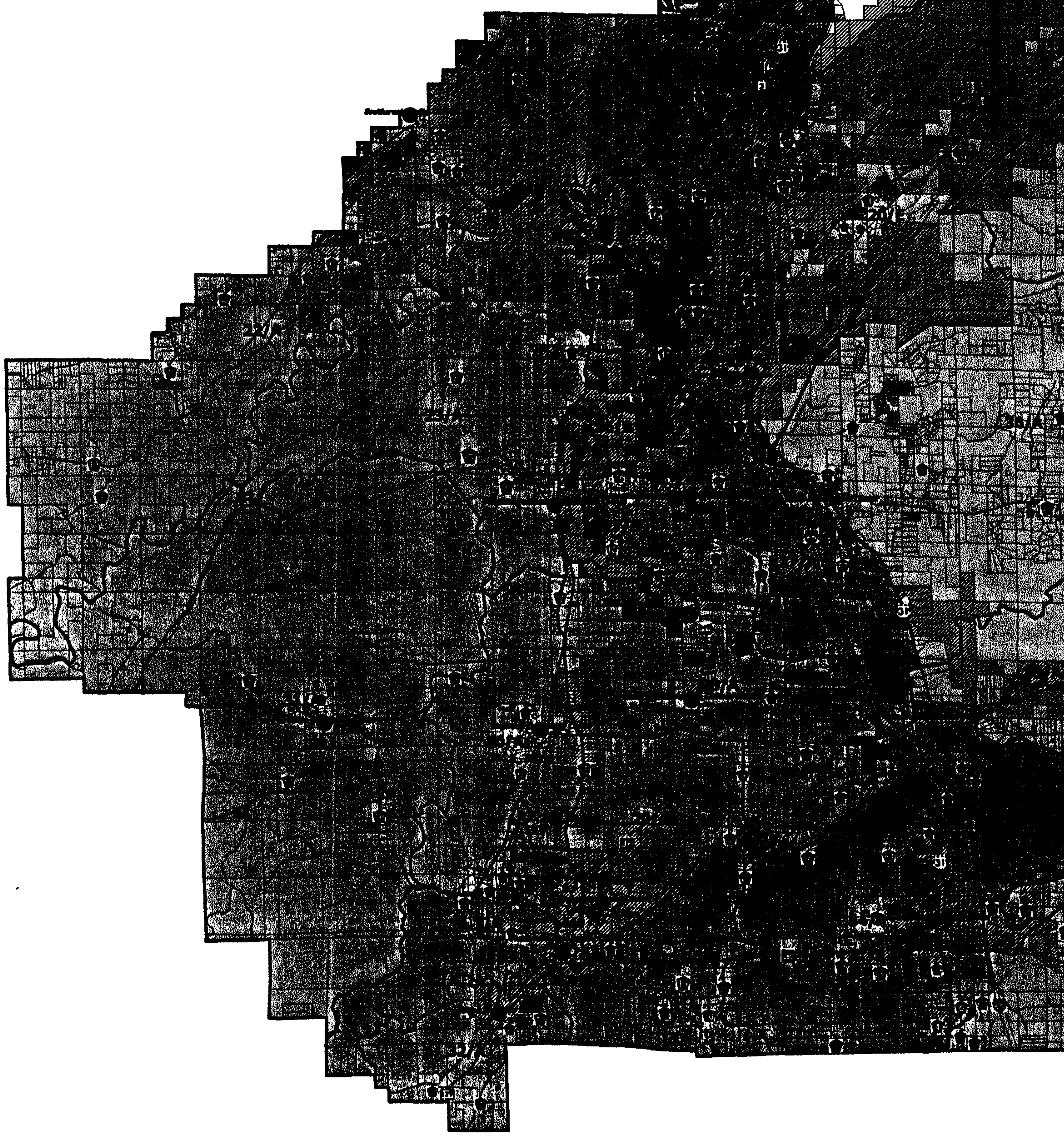


PRECINCTS, VOTING DISTRICTS, AND

PRECINCT	VOTING DISTRICT	PRECINCT NAME	POPULATION	STAT. 1	STAT. 2	STAT. 3	STAT. 4
1	A	Dunnevent Community Center	8	15	48	3/6	435
2	A	Vandiver Volunteer Fire Department	8	15	48/50	3	516
3	A	Turner-Holts American Legion Post #195	8	15	50	3	102
3	B	Turner-Holts American Legion Post #195	1	15	50	3	58
4	A	Vincent City Hall	1	15	50	3	1368
5	A	Harpersville City Hall	1	15	50	3	818
6	A	New Life Assembly of God	1	15	50	3	276
6	B	New Life Assembly of God	8	15	41/43	3	187
6	C	New Life Assembly of God	9	15	41	3	656
7	A	Chelsea City Hall*	9	15	41	3	2267
8	A	North Shelby Baptist Church	9	15	41	3	532
9	A	Asbury United Methodist Church*	9	15/16	41/43	3/6	1667
10	A	North Shelby Baptist Church Youth Blast*	8	15	41/48	3/6	1954
11	A	Shoal Creek Town Hall	8	15	41/48	3/6	406
12	A	Greystone Farms Clubhouse*	8	15	48	6	1222
13	A	Hoover Fire Station #8 (Greystone)	8	15	48	6	2409
14	A	The Church at Brook Hills	8	16	48	6	2400
15	A	Meadowbrook Baptist Church	7	16	43/48	6	6387
16	A	New Hope Cumberland Presbyterian Church	7	16	41/43	6	3741
17	A	First Christian Church	6	16	43	6	3234
18	A	Valleydale Baptist Church*	6	16	43	6	3961
18	B	Valleydale Baptist Church*	7	16	43	6	815
19	A	Riverchase Church of Christ	6	16	43	6	4313
20	A	Pelham Civic Complex	6	14/16	43	3/6	1008
20	B	Pelham Civic Complex	5	14	43/49	3	3627
20	C	Pelham Civic Complex	4	14/15	43/49	3	2085
20	D	Pelham Civic Complex	2	14/15	49	3	131
20	E	Pelham Civic Complex	9	15/16	41	3/6	2785
21	A	Helena United Methodist Church	5	14	43/49	3	4643
21	B	Helena United Methodist Church	4	14	49	3	1841
22	A	Southcrest Baptist Church	5	14	43/49	3	1686
23	A	Maylene Pentecostal Lighthouse Church	3	14	41/43/49	3	491
24	A	Alabaster Municipal Annex	4	14	49	3	4063
25	A	Liberty Baptist Church	2	14/15	41/49	3	983
26	A	Westwood Baptist Church*	4	14	49	3	1975
26	B	Westwood Baptist Church*	3	14	49	3	2372
27	A	Ellottsville Cumberland Presbyterian Church	2	14	41/49	3	1044
27	B	Ellottsville Cumberland Presbyterian Church	3	14	41/49	3	1741
28	A	Saint Thomas Apostle Catholic Church	3	14	41	3	2743
29	A	University Baptist Church	3	14	41	3	1103
30	A	Dogwood Community Center	3	14	41/42	3	367
31	A	Pee Ridge Community Center	3	14	41/42/49	3	448
32	A	Wilton Municipal Annex	2	14	42	3	403
33	A	Montevallo First Baptist Church*	2	14	41/42	3	1572
34	A	Calera Municipal Library Annex	2	14	41	3	2017
34	B	Calera Municipal Library Annex	1	14	41	3	305
35	A	Concord Baptist Church*	9	14	41	3	311
35	B	Concord Baptist Church*	2	14/15	41	3	344
36	A	Camp Branch Civic Center*	9	14/15	41	3	913
37	A	Columbiana Recreation Building*	9	14/15	41	3	403
37	B	Columbiana Recreation Building*	1	14/15	41	3	1656
37	C	Columbiana Recreation Building*	2	15	41	3	336
38	A	Fourmile Volunteer Fire & Rescue Department	9	15	41	3	442
38	B	Fourmile Volunteer Fire & Rescue Department	1	15	41	3	64
39	A	Wilsonville United Methodist Church	1	15	41/50	3	1502
40	A	Old Shelby Elementary School	1	15	41	3	973
41	A	Bay Springs Baptist Church*	1	15	41	3	815

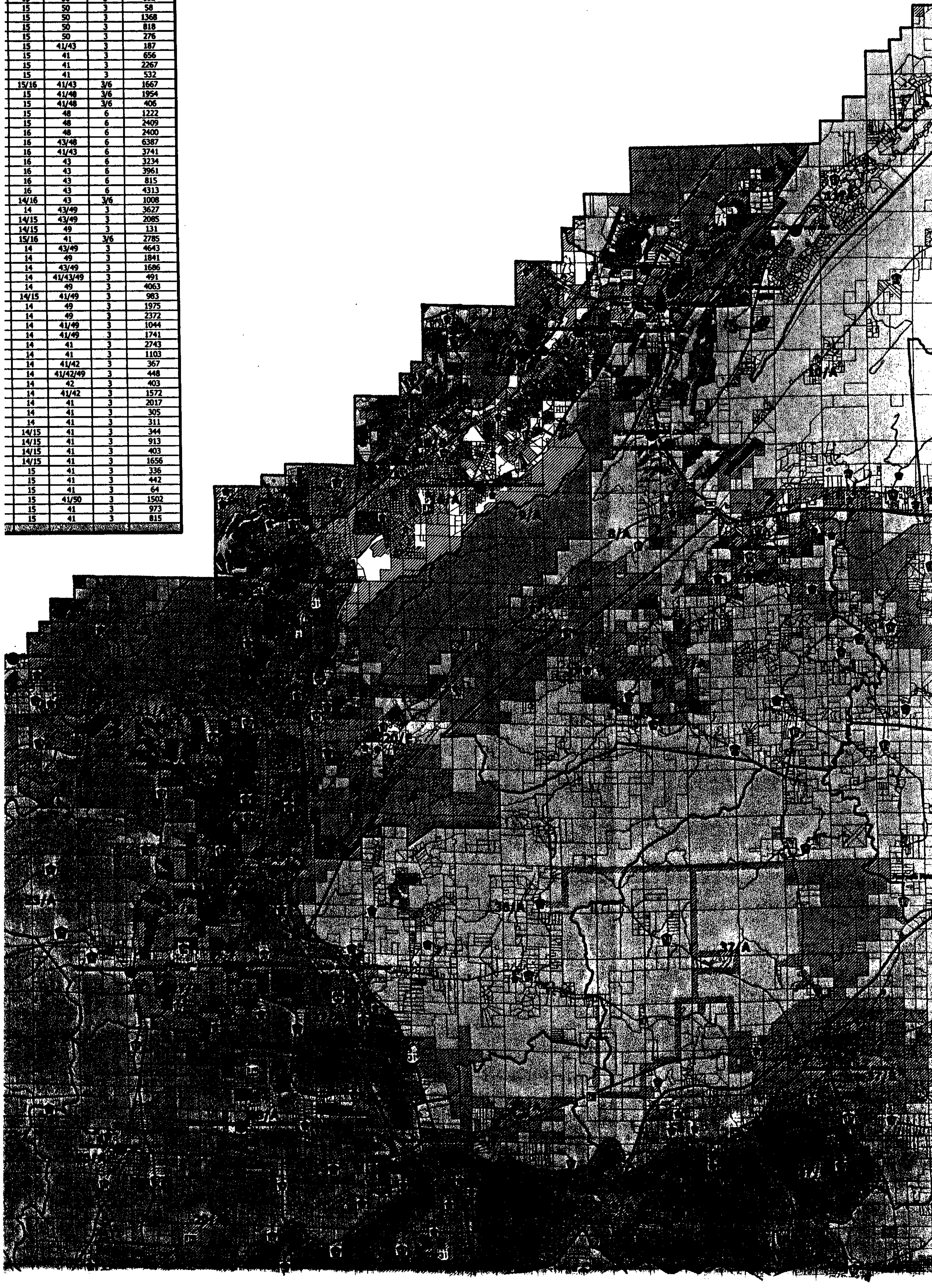


20	D	Pelham Civic Complex	2	14/15	49	3	131
20	E	Pelham Civic Complex	9	15/16	41	3/6	2785
21	A	Helena United Methodist Church	5	14	43/49	3	4643
21	B	Helena United Methodist Church	4	14	49	3	1841
22	A	Southcrest Baptist Church	5	14	43/49	3	1686
23	A	Maylene Pentecostal Lighthouse Church	3	14	41/43/49	3	491
24	A	Alabaster Municipal Annex	4	14	49	3	4063
25	A	Liberty Baptist Church	2	14/15	41/49	3	983
26	A	Westwood Baptist Church*	4	14	49	3	1975
26	B	Westwood Baptist Church*	3	14	49	3	2372
27	A	Elliottsville Cumberland Presbyterian Church	2	14	41/49	3	1044
27	B	Elliottsville Cumberland Presbyterian Church	3	14	41/49	3	1741
28	A	Saint Thomas Apostle Catholic Church	3	14	41	3	2743
29	A	University Baptist Church	3	14	41	3	1103
30	A	Dogwood Community Center	3	14	41/42	3	367
31	A	Pea Ridge Community Center	3	14	41/42/49	3	448
32	A	Wilton Municipal Annex	2	14	42	3	403
33	A	Montevallo First Baptist Church*	2	14	41/42	3	1572
34	A	Calera Municipal Library Annex	2	14	41	3	2017
34	B	Calera Municipal Library Annex	1	14	41	3	305
35	A	Concord Baptist Church*	9	14	41	3	311
35	B	Concord Baptist Church*	2	14/15	41	3	344
36	A	Camp Branch Civic Center*	9	14/15	41	3	913
37	A	Columbiens Recreation Building*	9	14/15	41	3	403
37	B	Columbiens Recreation Building*	1	14/15	41	3	1656
37	C	Columbiens Recreation Building*	2	15	41	3	336
38	A	Fourmile Volunteer Fire & Rescue Department	9	15	41	3	442
38	B	Fourmile Volunteer Fire & Rescue Department	1	15	41	3	64
39	A	Wilsonville United Methodist Church	1	15	41/50	3	1502
40	A	Old Shelby Elementary School	1	15	41	3	973
41	A	Bay Springs Baptist Church*	1	15	41	3	815

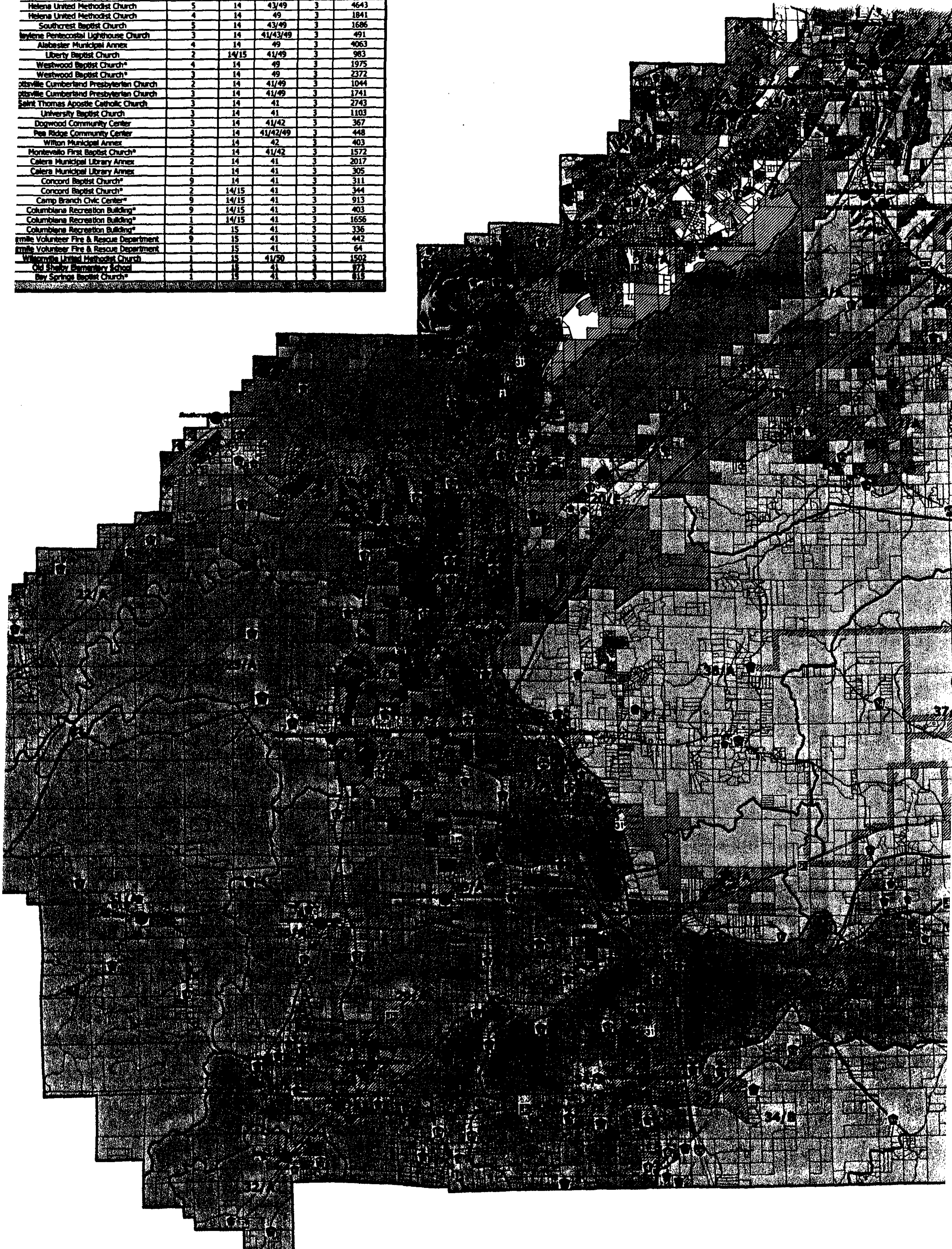


VOTING DISTRICTS, AND POLLING PLA

STATE	STATE	STATE	REGISTERED
NO.	NAME	AGE	VOTERS
15	48	3/6	435
15	48/50	3	516
15	50	3	102
15	50	3	58
15	50	3	1368
15	50	3	818
15	50	3	276
15	41/43	3	187
15	41	3	656
15	41	3	2267
15	41	3	532
15/16	41/43	3/6	1667
15	41/48	3/6	1954
15	41/48	3/6	406
15	48	6	1222
15	48	6	2409
16	48	6	2400
16	43/48	6	6387
16	41/43	6	3741
16	43	6	3234
16	43	6	3961
16	43	6	815
16	43	6	4313
14/16	43	3/6	1008
14	43/49	3	3627
14/15	43/49	3	2085
14/15	49	3	131
15/16	41	3/6	2785
14	43/49	3	4643
14	49	3	1841
14	43/49	3	1686
14	41/43/49	3	491
14	49	3	4063
14/15	41/49	3	983
14	49	3	1975
14	49	3	2372
14	41/49	3	1044
14	41/49	3	1741
14	41	3	2743
14	41	3	1103
14	41/42	3	367
14	41/42/49	3	448
14	42	3	403
14	41/42	3	1572
14	41	3	2017
14	41	3	305
14	41	3	311
14/15	41	3	344
14/15	41	3	913
14/15	41	3	403
14/15	41	3	1656
15	41	3	336
15	41	3	442
15	41	3	64
15	41/50	3	1502
15	41	3	973
15	41	3	815



Pelham Civic Complex	2	14/15	41/49	3	4643
Helena United Methodist Church	5	14	49	3	1841
Helena United Methodist Church	4	14	49	3	1841
Southwest Baptist Church	5	14	43/49	3	1686
Avyene Pentecostal Lighthouse Church	3	14	41/43/49	3	491
Alabaster Municipal Annex	4	14	49	3	4063
Liberty Baptist Church	2	14/15	41/49	3	983
Westwood Baptist Church*	4	14	49	3	1975
Westwood Baptist Church*	3	14	49	3	2372
Ottsville Cumberland Presbyterian Church	2	14	41/49	3	1044
Ottsville Cumberland Presbyterian Church	3	14	41/49	3	1741
Saint Thomas Apostle Catholic Church	3	14	41	3	2743
University Baptist Church	3	14	41	3	1103
Dogwood Community Center	3	14	41/42	3	367
Pea Ridge Community Center	3	14	41/42/49	3	448
Wilton Municipal Annex	2	14	42	3	403
Montevideo First Baptist Church*	2	14	41/42	3	1572
Calera Municipal Library Annex	2	14	41	3	2017
Calera Municipal Library Annex	1	14	41	3	305
Concord Baptist Church*	9	14	41	3	311
Concord Baptist Church*	2	14/15	41	3	344
Camp Branch Civic Center*	9	14/15	41	3	913
Columbiana Recreation Building*	9	14/15	41	3	403
Columbiana Recreation Building*	1	14/15	41	3	1656
Columbiana Recreation Building*	2	15	41	3	336
5 mile Volunteer Fire & Rescue Department	9	15	41	3	442
5 mile Volunteer Fire & Rescue Department	1	15	41	3	64
Willettsville United Methodist Church	1	15	41/50	3	1502
Old Shelby Elementary School	1	15	41	3	873
Bay Springs Baptist Church*	1	15	41	3	815

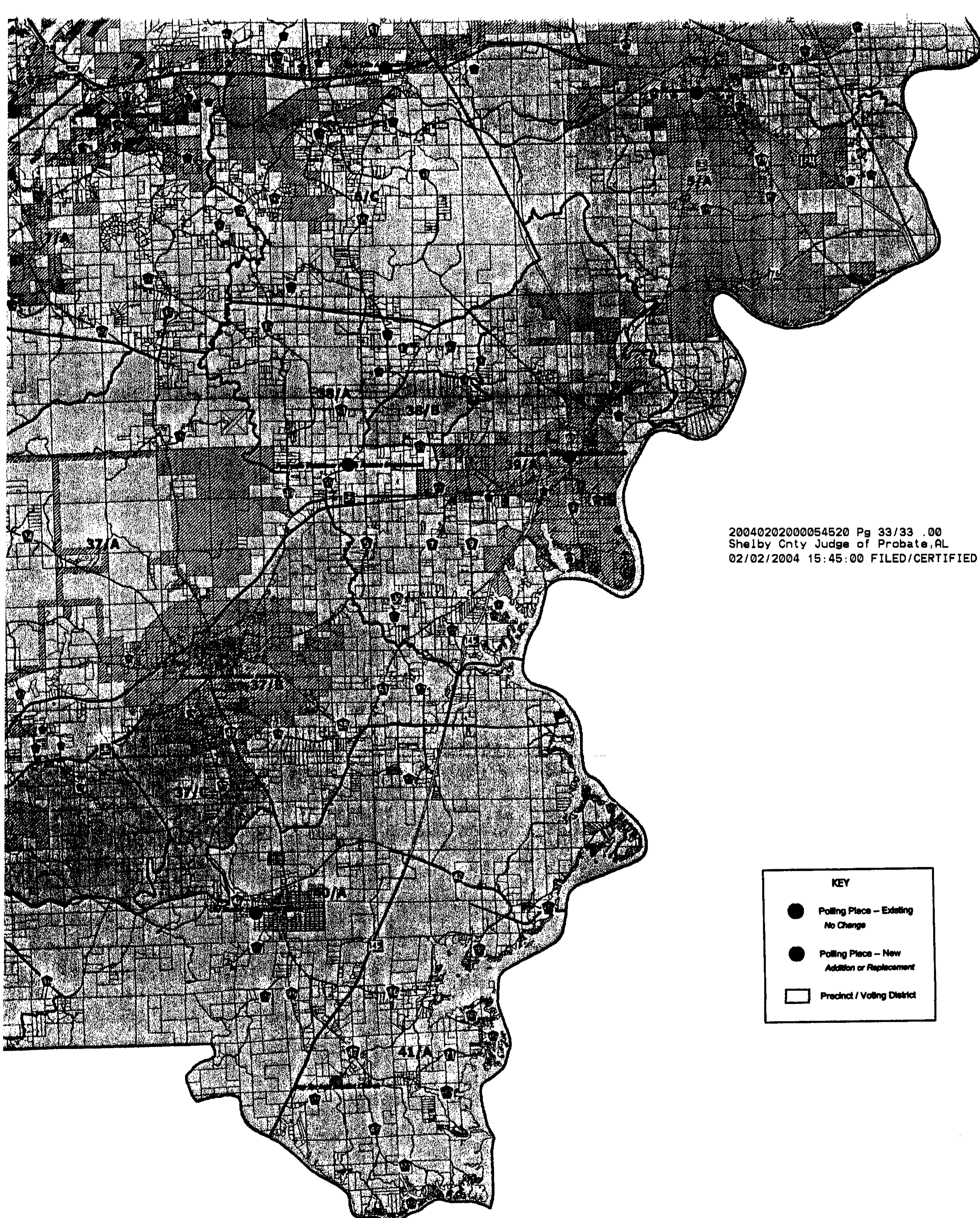


Map is not to Scale




Map Created
January 2, 2004

DOLLING PLACES





20040202000054520 Pg 33/33 .00
Shelby Cnty Judge of Probate,AL
02/02/2004 15:45:00 FILED/CERTIFIED

KEY	
	Polling Place - Existing No Change
	Polling Place - New Addition or Replacement
	Precinct / Voting District

DISCLAIMER

The Shelby County Department of Development Services produced this map using data collected, generated, converted, and/or prepared by various sources. These sources may include, but are not limited to, this Department; other departments of the Shelby County Government; other Shelby County governments; and/or regional, local, State, and Federal governmental agencies. The Shelby County Department of Development Services assumes no responsibility for the accuracy of any data acquired from other sources that was used in the production of this map.