

19980808000200501 11 \$ 00
 Shelby City Judge of Probate, AL
 06/08/1998 10:26:44AM FILED/CERT

CHANDALAR TOWNHOMES
 FIRST ADDITION

4 RESIDENTIAL SUBDIVISION SITUATED IN THE
 SE 1/4 OF THE SW 1/4 OF THE SE 1/4 OF
 SECTION 1, TOWNSHIP 26 SOUTH, RANGE 3 WEST
 CITY OF PELHAM, SHELBY COUNTY, ALABAMA

DEVELOPER
 SAVANNAH DEVELOPMENT, INC
 2086 VALLEDALE TERRACE
 BIRMINGHAM, ALABAMA 35224

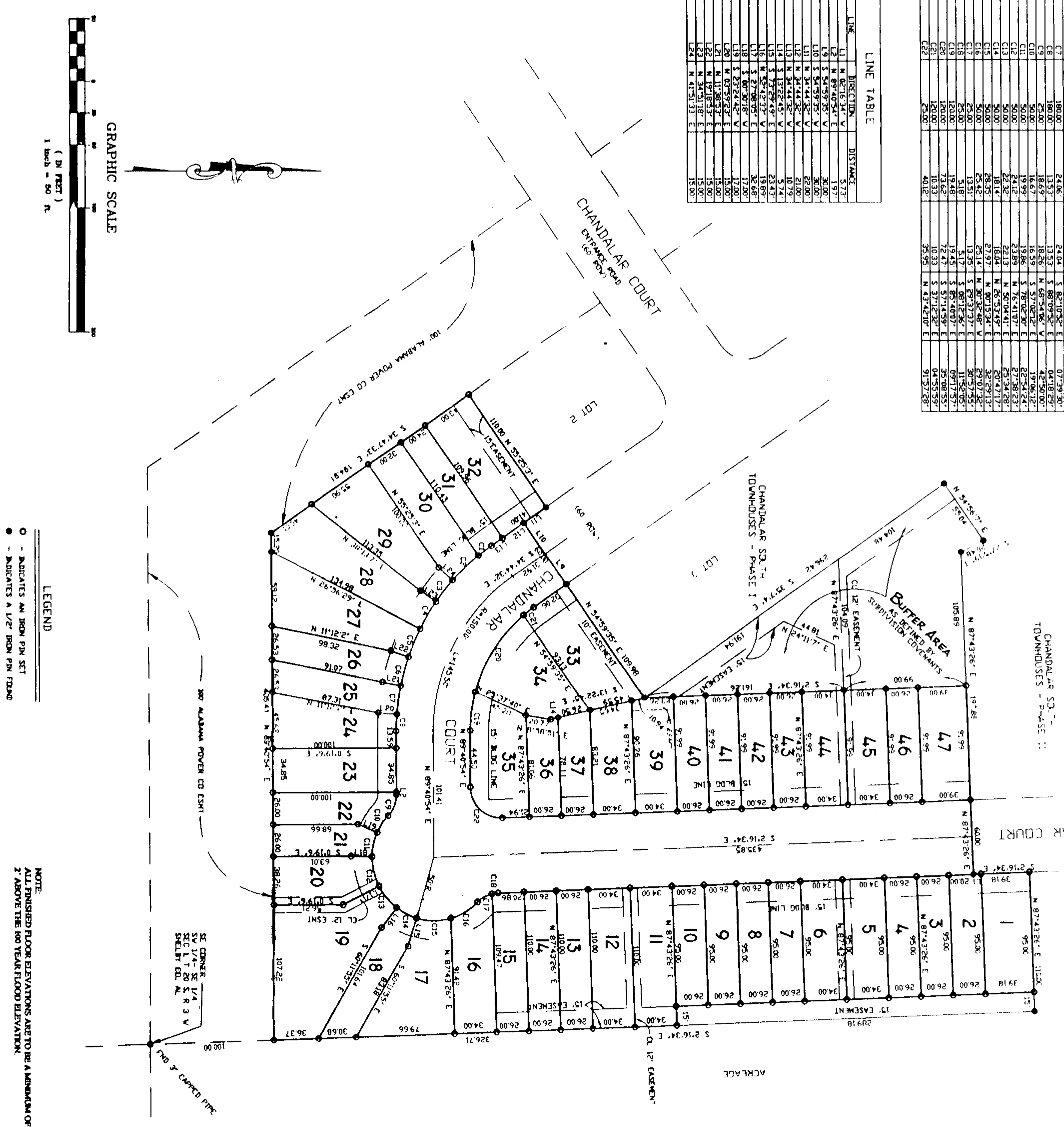
PREPARED BY
 R.C. FARMER AND ASSOCIATES, INC
 3219 HWY #52 WEST
 PELHAM, ALABAMA 35124

CURVE TABLE

CURVE	CHORD	CHORD BEARING	ANGLE	PIECE	PIECE BEARING	PIECE LENGTH
C1	13.22	S 86° 50' 29" E	104.12	13.22	S 86° 50' 29" E	13.22
C2	28.81	S 43° 26' 48" E	104.12	28.81	S 43° 26' 48" E	28.81
C3	24.86	S 50° 06' 56" E	104.12	24.86	S 50° 06' 56" E	24.86
C4	24.86	S 50° 06' 56" E	104.12	24.86	S 50° 06' 56" E	24.86
C5	24.86	S 50° 06' 56" E	104.12	24.86	S 50° 06' 56" E	24.86
C6	24.86	S 50° 06' 56" E	104.12	24.86	S 50° 06' 56" E	24.86
C7	24.86	S 50° 06' 56" E	104.12	24.86	S 50° 06' 56" E	24.86
C8	24.86	S 50° 06' 56" E	104.12	24.86	S 50° 06' 56" E	24.86
C9	24.86	S 50° 06' 56" E	104.12	24.86	S 50° 06' 56" E	24.86
C10	24.86	S 50° 06' 56" E	104.12	24.86	S 50° 06' 56" E	24.86
C11	24.86	S 50° 06' 56" E	104.12	24.86	S 50° 06' 56" E	24.86
C12	24.86	S 50° 06' 56" E	104.12	24.86	S 50° 06' 56" E	24.86
C13	24.86	S 50° 06' 56" E	104.12	24.86	S 50° 06' 56" E	24.86
C14	24.86	S 50° 06' 56" E	104.12	24.86	S 50° 06' 56" E	24.86
C15	24.86	S 50° 06' 56" E	104.12	24.86	S 50° 06' 56" E	24.86
C16	24.86	S 50° 06' 56" E	104.12	24.86	S 50° 06' 56" E	24.86
C17	24.86	S 50° 06' 56" E	104.12	24.86	S 50° 06' 56" E	24.86
C18	24.86	S 50° 06' 56" E	104.12	24.86	S 50° 06' 56" E	24.86
C19	24.86	S 50° 06' 56" E	104.12	24.86	S 50° 06' 56" E	24.86
C20	24.86	S 50° 06' 56" E	104.12	24.86	S 50° 06' 56" E	24.86
C21	24.86	S 50° 06' 56" E	104.12	24.86	S 50° 06' 56" E	24.86
C22	24.86	S 50° 06' 56" E	104.12	24.86	S 50° 06' 56" E	24.86

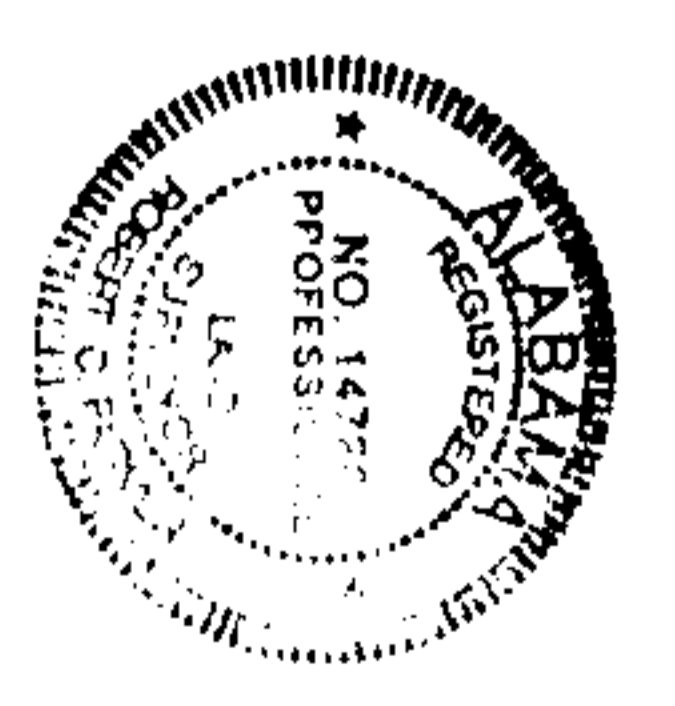
LINE TABLE

LINE	DIRECTION	BEARING	LENGTH
L1	N 87° 43' 26" E	5.73	
L2	N 87° 43' 26" E	3.73	
L3	N 87° 43' 26" E	3.73	
L4	N 87° 43' 26" E	3.73	
L5	N 87° 43' 26" E	3.73	
L6	N 87° 43' 26" E	3.73	
L7	N 87° 43' 26" E	3.73	
L8	N 87° 43' 26" E	3.73	
L9	N 87° 43' 26" E	3.73	
L10	N 87° 43' 26" E	3.73	
L11	N 87° 43' 26" E	3.73	
L12	N 87° 43' 26" E	3.73	
L13	N 87° 43' 26" E	3.73	
L14	N 87° 43' 26" E	3.73	
L15	N 87° 43' 26" E	3.73	
L16	N 87° 43' 26" E	3.73	
L17	N 87° 43' 26" E	3.73	
L18	N 87° 43' 26" E	3.73	
L19	N 87° 43' 26" E	3.73	
L20	N 87° 43' 26" E	3.73	
L21	N 87° 43' 26" E	3.73	
L22	N 87° 43' 26" E	3.73	



LEGEND
 O - INDICATES AN IRON PIN SET
 - INDICATES A 1/2" IRON PIN FOUND

NOTE:
 ALL FINISHED FLOOR ELEVATIONS ARE TO BE A MINIMUM OF
 2' ABOVE THE 100 YEAR FLOOD ELEVATION.



I, Robert C. Farmer, a Notary Public in and for said County, do hereby certify that Robert C. Farmer, who is known to me and who is known to be known to me, on this date, after being duly sworn, the contents of said subdivision plat as shown and returned to me, and the contents of said subdivision plat as shown and returned to me, are true and correct to the best of my knowledge and belief, and that the same are true and correct to the best of my knowledge and belief, and that the same are true and correct to the best of my knowledge and belief.

Given under my hand and seal this 1st day of 1998.

Robert C. Farmer, Notary Public
 My Comm. Expires 12/31/2000

I, Robert C. Farmer, a Notary Public in and for said County, do hereby certify that Robert C. Farmer, who is known to me and who is known to be known to me, on this date, after being duly sworn, the contents of said subdivision plat as shown and returned to me, and the contents of said subdivision plat as shown and returned to me, are true and correct to the best of my knowledge and belief, and that the same are true and correct to the best of my knowledge and belief, and that the same are true and correct to the best of my knowledge and belief.

Given under my hand and seal this 1st day of 1998.

Robert C. Farmer, Notary Public
 My Comm. Expires 12/31/2000

I, Robert C. Farmer, a Notary Public in and for said County, do hereby certify that Robert C. Farmer, who is known to me and who is known to be known to me, on this date, after being duly sworn, the contents of said subdivision plat as shown and returned to me, and the contents of said subdivision plat as shown and returned to me, are true and correct to the best of my knowledge and belief, and that the same are true and correct to the best of my knowledge and belief, and that the same are true and correct to the best of my knowledge and belief.

Given under my hand and seal this 1st day of 1998.

Robert C. Farmer, Notary Public
 My Comm. Expires 12/31/2000