

**HIGHLAND LAKES 8TH SECTOR  
AN EDDELMAN COMMUNITY**

APPROVED FOR SINGLE FAMILY RESIDENCES  
SITUATED IN THE 8TH OF SECTION 4 AND THE 10TH OF SECTION 9, TOWNSHIP 19 SOUTH,  
RANGE 1 WEST, SHELBY COUNTY, ALABAMA  
Date: 3-9-98



PREPARED BY:  
**K. B. WERGAND & ASSOCIATES, P.C.**  
Associated: B. Wergand, Reg. P.E. & L.S. #1178  
C. B. Wergand, Reg. L.S. #1119  
2211 Cahaba Valley Road  
Birmingham, Alabama 35243-2627  
TEL: (205) 991-4965

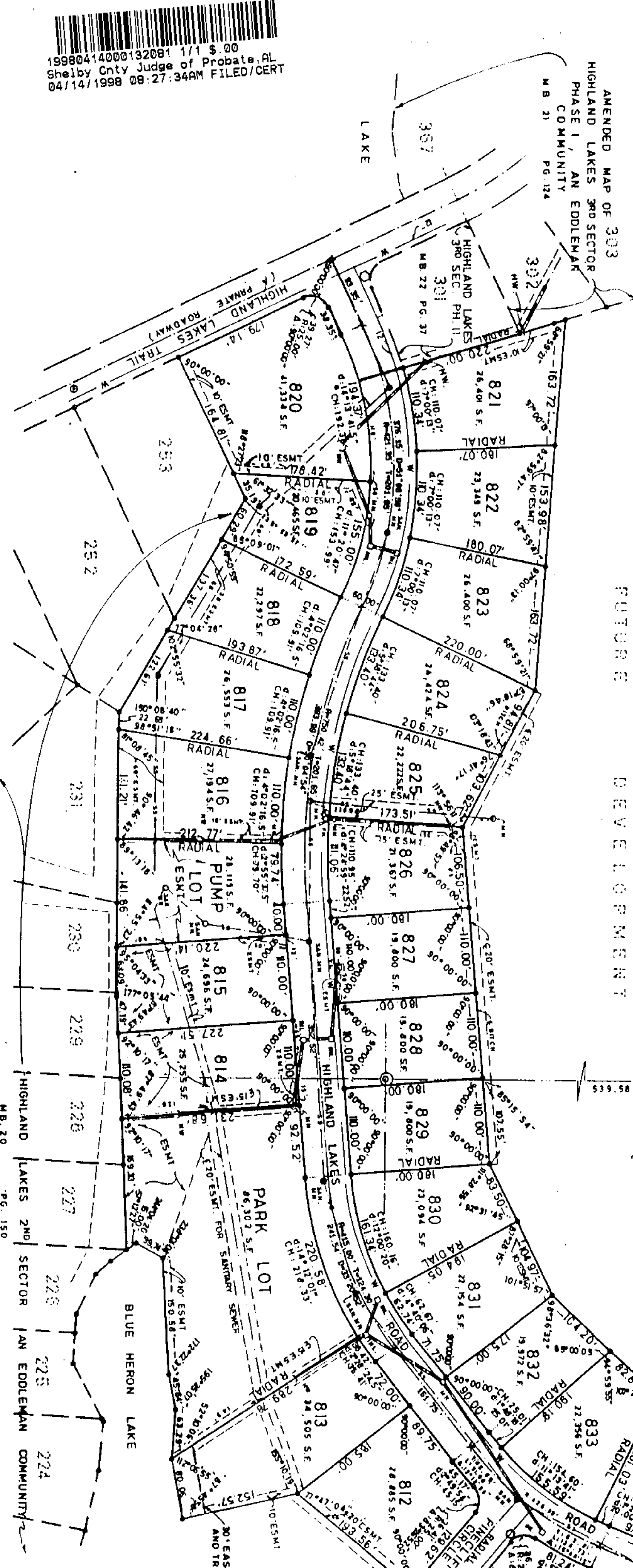
OWNERS/DEVELOPER:  
**HIGHLAND LAKES DEVELOPMENT, LIMITED**  
2700 Highway 200, Suite 312  
Birmingham, AL 35223  
TEL: (205) 811-9753

MANAGED BY:  
**Bill D. Edleman**  
2700 Highway 200, Suite 312  
Birmingham, AL 35223  
TEL: (205) 811-9753

SUBJECT COUNTY JURISDICTION:  
BIRMINGHAM WATER & SANITARY SERVICE

**HIGHLAND LAKES**  
an Edleman community

Owner/Developer:  
**HIGHLAND LAKES DEVELOPMENT, LIMITED**  
General Partner:  
**EDDELMAN ENTERPRISES, INC.**  
2700 Highway 200, Suite 312  
Birmingham, Alabama 35223  
Tel: 811-9753



STATE OF ALABAMA  
COUNTY OF SHELBY

I, the undersigned, a Notary Public in and for said County and State, do hereby certify that this is a true and correct copy of the original plat of the subdivision of the Highland Lakes 8th Sector, Phase I - An Edleman Community, as shown on the attached map, and that the same has been duly recorded in the office of the County Clerk of Shelby County, Alabama, in Book 145, Page 145, of said County's Public Records, and that the same is a true and correct copy of the original plat of the subdivision of the Highland Lakes 8th Sector, Phase I - An Edleman Community, as shown on the attached map, and that the same has been duly recorded in the office of the County Clerk of Shelby County, Alabama, in Book 145, Page 145, of said County's Public Records.

DATE: March 9, 1998

BY: [Signature]  
Notary Public  
My commission expires: 11/1/2000



STATE OF ALABAMA  
COUNTY OF SHELBY

I, the undersigned, a Notary Public in and for said County and State, do hereby certify that this is a true and correct copy of the original plat of the subdivision of the Highland Lakes 8th Sector, Phase I - An Edleman Community, as shown on the attached map, and that the same has been duly recorded in the office of the County Clerk of Shelby County, Alabama, in Book 145, Page 145, of said County's Public Records, and that the same is a true and correct copy of the original plat of the subdivision of the Highland Lakes 8th Sector, Phase I - An Edleman Community, as shown on the attached map, and that the same has been duly recorded in the office of the County Clerk of Shelby County, Alabama, in Book 145, Page 145, of said County's Public Records.

DATE: March 9, 1998

BY: [Signature]  
Notary Public  
My commission expires: 11/1/2000

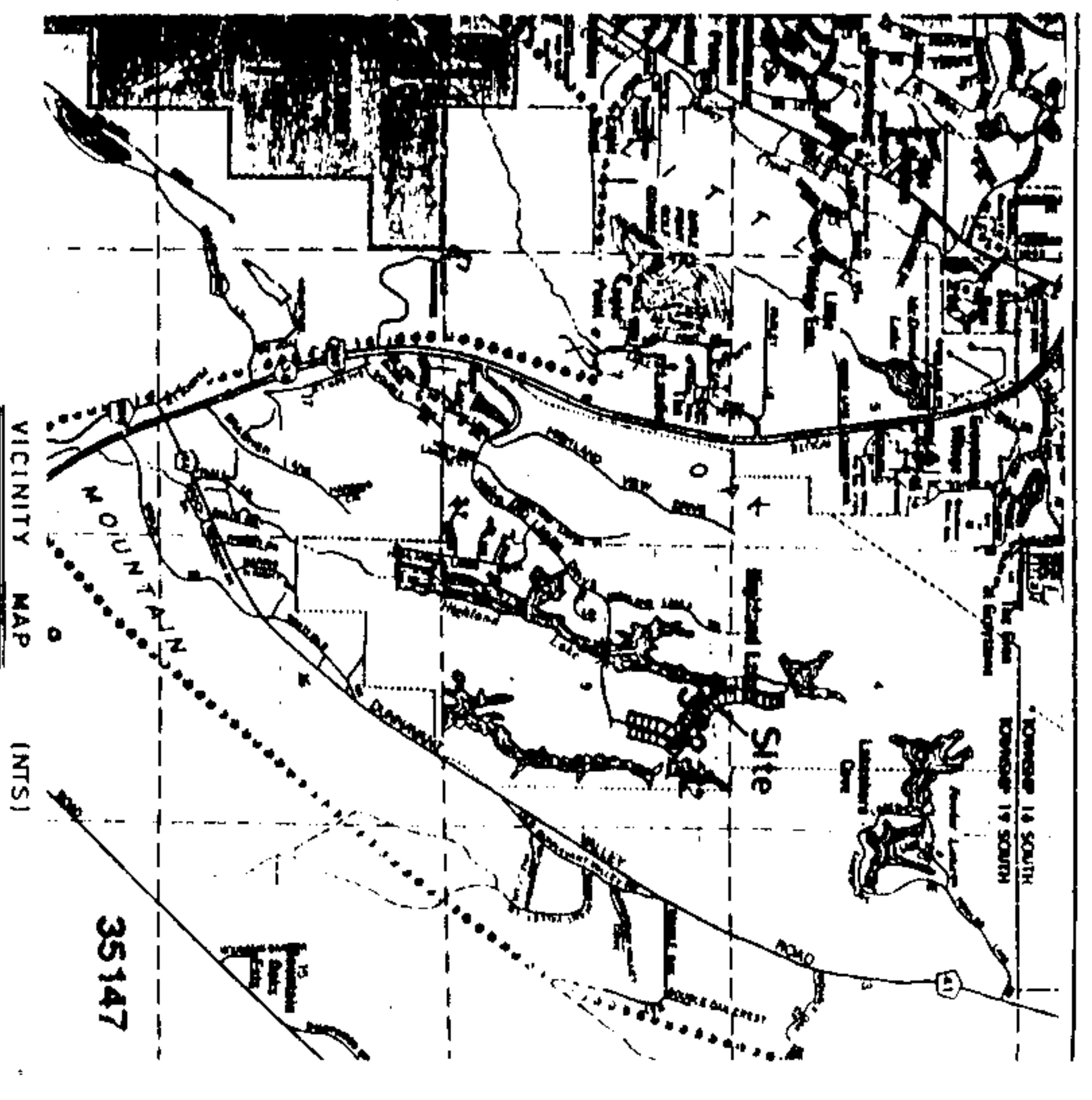
MAP BOOK 23 PAGE 145

APPROVED: [Signature] DATE: 4/12/98  
COUNTY ENGINEER

APPROVED: [Signature] DATE: 3-9-98  
PLANNING COMMISSION

APPROVED: [Signature] DATE: 3-9-98  
SHELBY COUNTY HEALTH OFFICER

APPROVED: [Signature] DATE: 3-12-98  
CAHABA VALLEY FIRE CHIEF



NOTE: TREE BUFFER ALONG THE LAKE MUST REMAIN IN NATURAL STATE, UNLESS APPROVED BY THE ARCHITECTURAL REVIEW COMMITTEE.

NOTES:  
1. Lot dimensions shown are for the unimproved lots only.  
2. All streets and easements shown on this map are subject to the provisions of the subdivision plat and the plat of the subdivision of the Highland Lakes 8th Sector, Phase I - An Edleman Community, as shown on the attached map, and that the same has been duly recorded in the office of the County Clerk of Shelby County, Alabama, in Book 145, Page 145, of said County's Public Records.  
3. The subdivision of the Highland Lakes 8th Sector, Phase I - An Edleman Community, as shown on the attached map, and that the same has been duly recorded in the office of the County Clerk of Shelby County, Alabama, in Book 145, Page 145, of said County's Public Records.  
4. All easements shown on this map are subject to the provisions of the subdivision plat and the plat of the subdivision of the Highland Lakes 8th Sector, Phase I - An Edleman Community, as shown on the attached map, and that the same has been duly recorded in the office of the County Clerk of Shelby County, Alabama, in Book 145, Page 145, of said County's Public Records.  
5. The subdivision of the Highland Lakes 8th Sector, Phase I - An Edleman Community, as shown on the attached map, and that the same has been duly recorded in the office of the County Clerk of Shelby County, Alabama, in Book 145, Page 145, of said County's Public Records.  
6. All easements shown on this map are subject to the provisions of the subdivision plat and the plat of the subdivision of the Highland Lakes 8th Sector, Phase I - An Edleman Community, as shown on the attached map, and that the same has been duly recorded in the office of the County Clerk of Shelby County, Alabama, in Book 145, Page 145, of said County's Public Records.  
7. The subdivision of the Highland Lakes 8th Sector, Phase I - An Edleman Community, as shown on the attached map, and that the same has been duly recorded in the office of the County Clerk of Shelby County, Alabama, in Book 145, Page 145, of said County's Public Records.  
8. All easements shown on this map are subject to the provisions of the subdivision plat and the plat of the subdivision of the Highland Lakes 8th Sector, Phase I - An Edleman Community, as shown on the attached map, and that the same has been duly recorded in the office of the County Clerk of Shelby County, Alabama, in Book 145, Page 145, of said County's Public Records.  
9. The subdivision of the Highland Lakes 8th Sector, Phase I - An Edleman Community, as shown on the attached map, and that the same has been duly recorded in the office of the County Clerk of Shelby County, Alabama, in Book 145, Page 145, of said County's Public Records.  
10. All easements shown on this map are subject to the provisions of the subdivision plat and the plat of the subdivision of the Highland Lakes 8th Sector, Phase I - An Edleman Community, as shown on the attached map, and that the same has been duly recorded in the office of the County Clerk of Shelby County, Alabama, in Book 145, Page 145, of said County's Public Records.