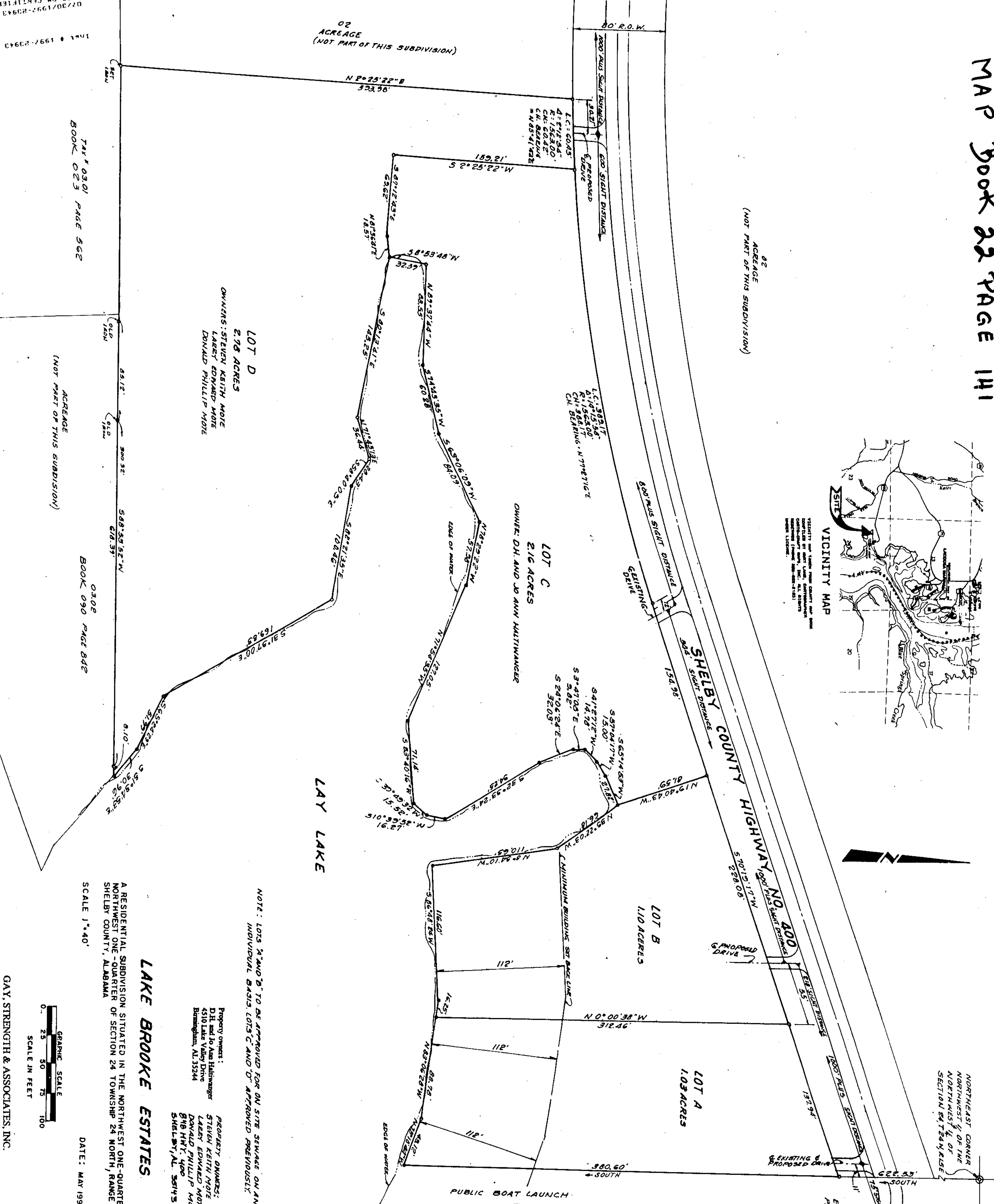
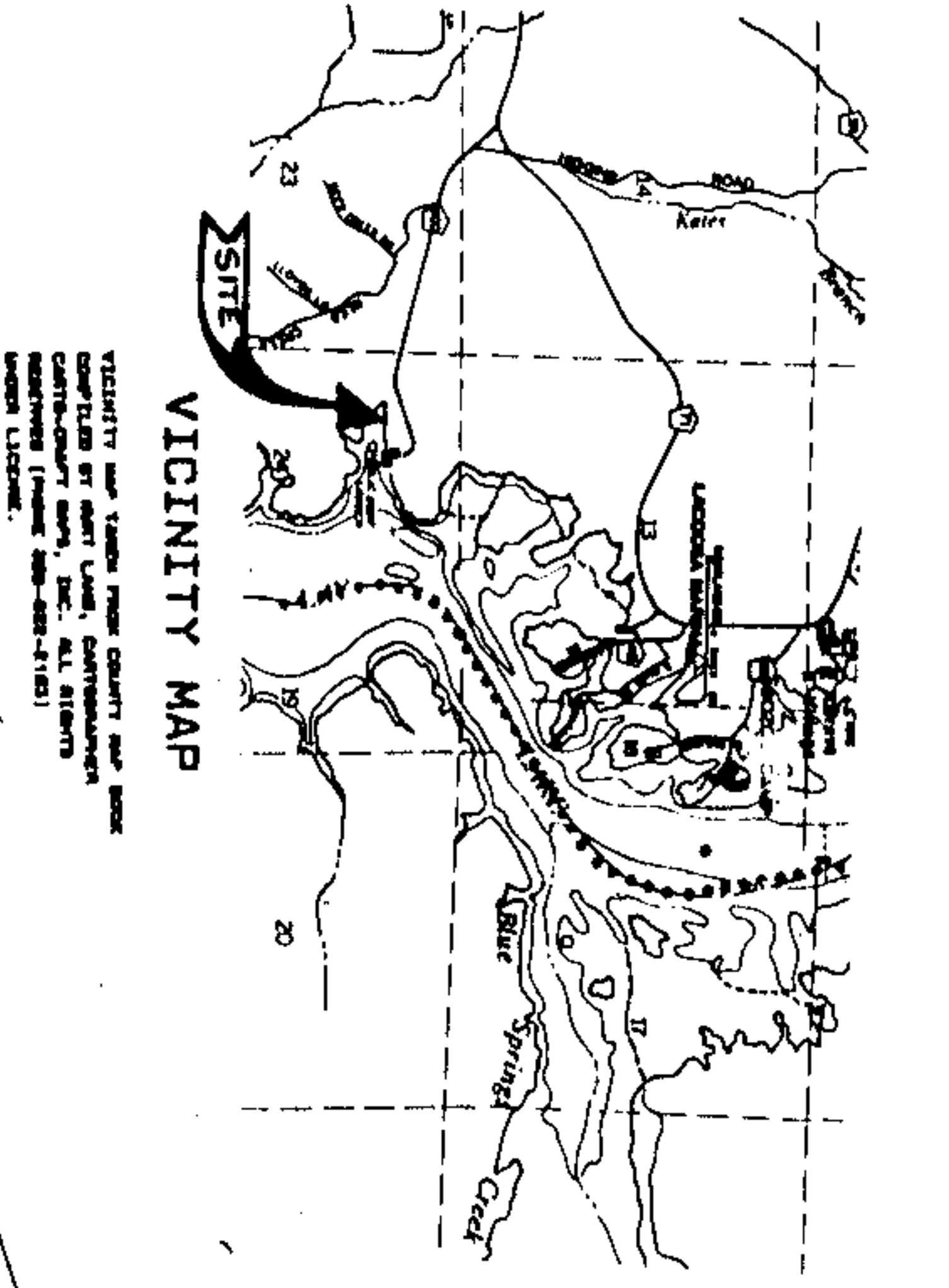


MAP BOOK 22 PAGE 141



STATE OF ALABAMA
SHELBY COUNTY

I, Henry A. Gay, a Registered Professional Land Surveyor of the State of Alabama and D.H. Halliburton, a Registered Professional Land Surveyor of the State of Alabama and Donald Phillip Moore, Owners hereby certify that this plat or map was made pursuant to a contract between us and the Owners of the land shown on this plat or map and that the survey and plat or map were made at the request of said Owners and that said Owners have read and approved the same and that they are the Owners of the land shown on this plat or map and that they are the Owners of the land shown on this plat or map and that they are the Owners of the land shown on this plat or map.

APPROVED: *[Signature]*
COUNTY ENGINEER

APPROVED: *[Signature]*
SHELBY COUNTY HEALTH OFFICER

APPROVED: *[Signature]*
SHELBY COUNTY PLANNING COMMISSION

APPROVED: *[Signature]*
SHELBY COUNTY PLANNING COMMISSION

APPROVED: *[Signature]*
SHELBY COUNTY PLANNING COMMISSION

APPROVED: *[Signature]*
SHELBY COUNTY PLANNING COMMISSION

APPROVED: *[Signature]*
SHELBY COUNTY PLANNING COMMISSION

APPROVED: *[Signature]*
SHELBY COUNTY PLANNING COMMISSION

NOTE: LOTS A, B, C AND D ARE APPROVED FOR ON SITE SEWERAGE ON AN INDIVIDUAL BASIS. LOTS C AND D APPROVED FOR INDIVIDUAL SEWERAGE.

PROPERTY OWNERS:
D.H. and Jo Ann Halliburton
4510 Lake Valley Drive
Birmingham, AL 35244

PROPERTY OWNERS:
STEVEN KEITH MOSE
LARRY EDWARD MOSE
DONALD PHILLIP MOSE
878 HWY. 490
SHELBY, AL 35875

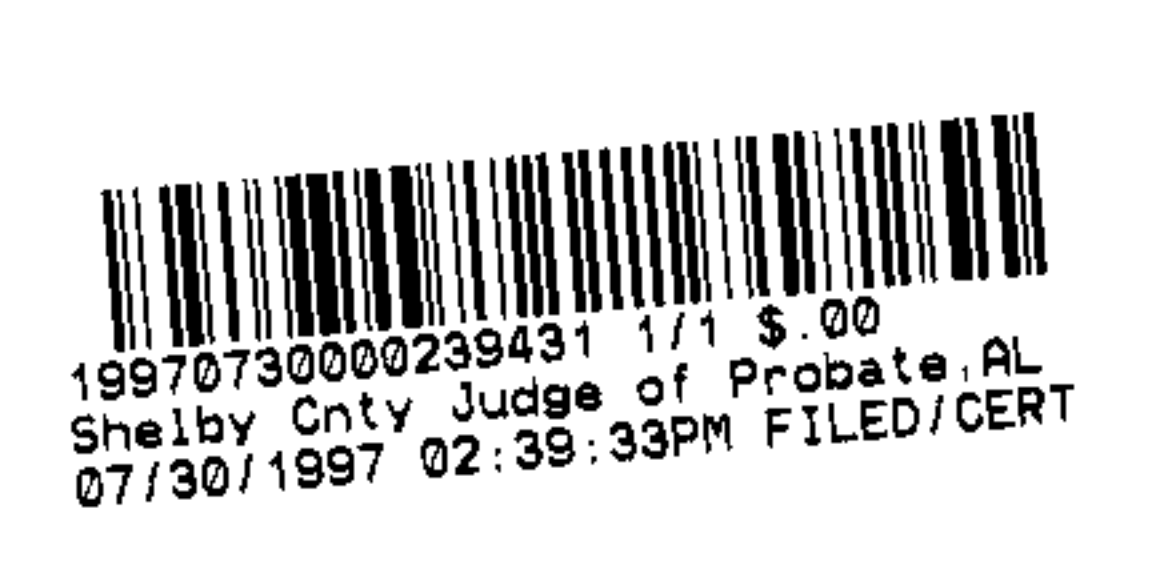
LAKE BROOKE ESTATES

A RESIDENTIAL SUBDIVISION SITUATED IN THE NORTHWEST ONE-QUARTER OF THE NORTHWEST ONE-FOURTH OF SECTION 28 TOWNSHIP 28 NORTH, RANGE 15 EAST, SHELBY COUNTY, ALABAMA.

SCALE 1" = 40'

DATE: MAY 1997

GAY, STRENGTH & ASSOCIATES, INC.



07/30/1997 02:35:33PM
SHELBY COUNTY JUDGE OF PROBATE AL
100

L-78