

ST CHARLES DRIVE

ST CHARLES PLACE JACKSON SQUARE
PHASE TWO SECTOR THREE

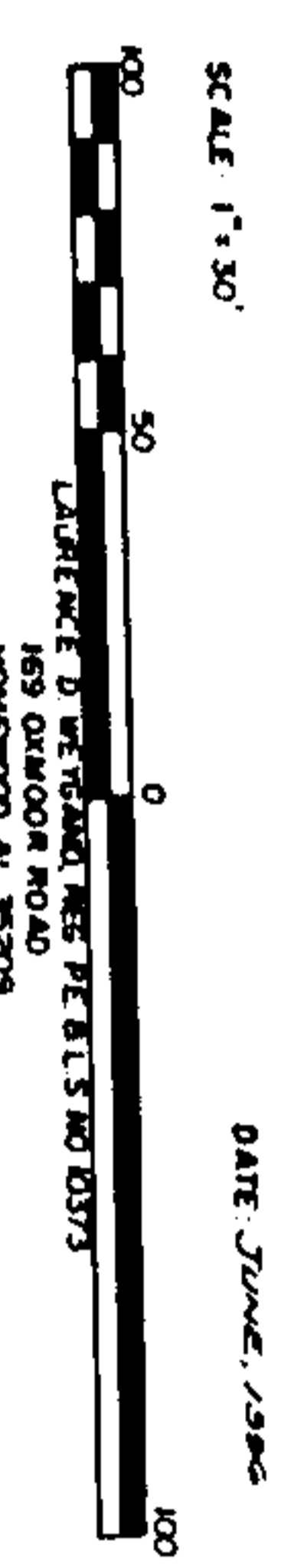
ST CHARLES PLACE PHASE TWO
SECTOR FOUR

JACKSON CIRCLE

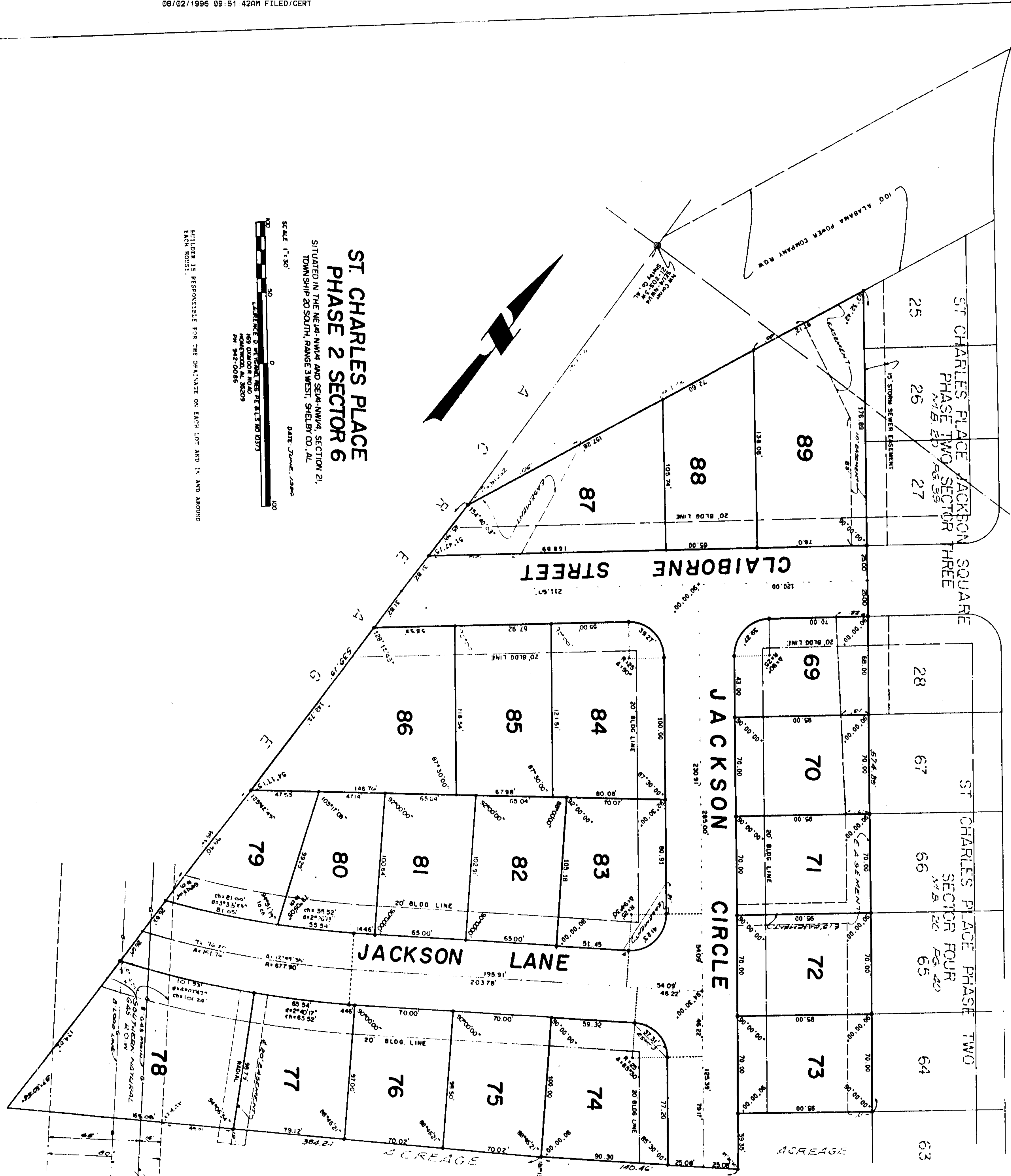
CLAIBORNE STREET

ST CHARLES PLACE PHASE 2 SECTOR 6

SITUATED IN THE NE 1/4 NW 1/4 AND SE 1/4 NW 1/4, SECTION 21,
TOWNSHIP 20 SOUTH, RANGE 3 WEST, SHELBY CO., AL.



ENGINEER IS RESPONSIBLE FOR THE DATA ON EACH LOT AND IS AROUND EACH HOUSE.



STATE OF ALABAMA

The undersigned, Lawrence D. Wynn, a Registered Engineer-Land Surveyor, State of Alabama, and Greg Gilbert, a Registered Engineer-Land Surveyor, State of Alabama, hereby certify that the foregoing plat is a true and correct copy of the original plat on file in the office of the Surveyor General, State of Alabama, and that the same is a true and correct copy of the original plat on file in the office of the Surveyor General, State of Alabama, and that the same is a true and correct copy of the original plat on file in the office of the Surveyor General, State of Alabama.

By: *Lawrence D. Wynn*
Lawrence D. Wynn, President of
Wynne Development Co., Inc.
Reg. P.E.-L.S. 110173

By: *Greg Gilbert*
Greg Gilbert, President of
Wynne Development Co., Inc.
Reg. P.E.-L.S. 110173

DATE: 1/17/76

STATE OF ALABAMA

The undersigned, Lawrence D. Wynn, a Notary Public in and for said County and State of Alabama, do hereby certify that the foregoing plat is a true and correct copy of the original plat on file in the office of the Surveyor General, State of Alabama, and that the same is a true and correct copy of the original plat on file in the office of the Surveyor General, State of Alabama.

My commission expires: 12-31-76 By: *Lawrence D. Wynn*
Notary Public

STATE OF ALABAMA

The undersigned, Lawrence D. Wynn, a Notary Public in and for said County and State of Alabama, do hereby certify that the foregoing plat is a true and correct copy of the original plat on file in the office of the Surveyor General, State of Alabama, and that the same is a true and correct copy of the original plat on file in the office of the Surveyor General, State of Alabama.

My commission expires: 12-31-76 By: *Lawrence D. Wynn*
Notary Public

STATE OF ALABAMA

The undersigned, Lawrence D. Wynn, a Notary Public in and for said County and State of Alabama, do hereby certify that the foregoing plat is a true and correct copy of the original plat on file in the office of the Surveyor General, State of Alabama, and that the same is a true and correct copy of the original plat on file in the office of the Surveyor General, State of Alabama.

My commission expires: 12-31-76 By: *Lawrence D. Wynn*
Notary Public

STATE OF ALABAMA

The undersigned, Lawrence D. Wynn, a Notary Public in and for said County and State of Alabama, do hereby certify that the foregoing plat is a true and correct copy of the original plat on file in the office of the Surveyor General, State of Alabama, and that the same is a true and correct copy of the original plat on file in the office of the Surveyor General, State of Alabama.

My commission expires: 12-31-76 By: *Lawrence D. Wynn*
Notary Public

STATE OF ALABAMA

The undersigned, Lawrence D. Wynn, a Notary Public in and for said County and State of Alabama, do hereby certify that the foregoing plat is a true and correct copy of the original plat on file in the office of the Surveyor General, State of Alabama, and that the same is a true and correct copy of the original plat on file in the office of the Surveyor General, State of Alabama.

My commission expires: 12-31-76 By: *Lawrence D. Wynn*
Notary Public

STATE OF ALABAMA

The undersigned, Lawrence D. Wynn, a Notary Public in and for said County and State of Alabama, do hereby certify that the foregoing plat is a true and correct copy of the original plat on file in the office of the Surveyor General, State of Alabama, and that the same is a true and correct copy of the original plat on file in the office of the Surveyor General, State of Alabama.

My commission expires: 12-31-76 By: *Lawrence D. Wynn*
Notary Public