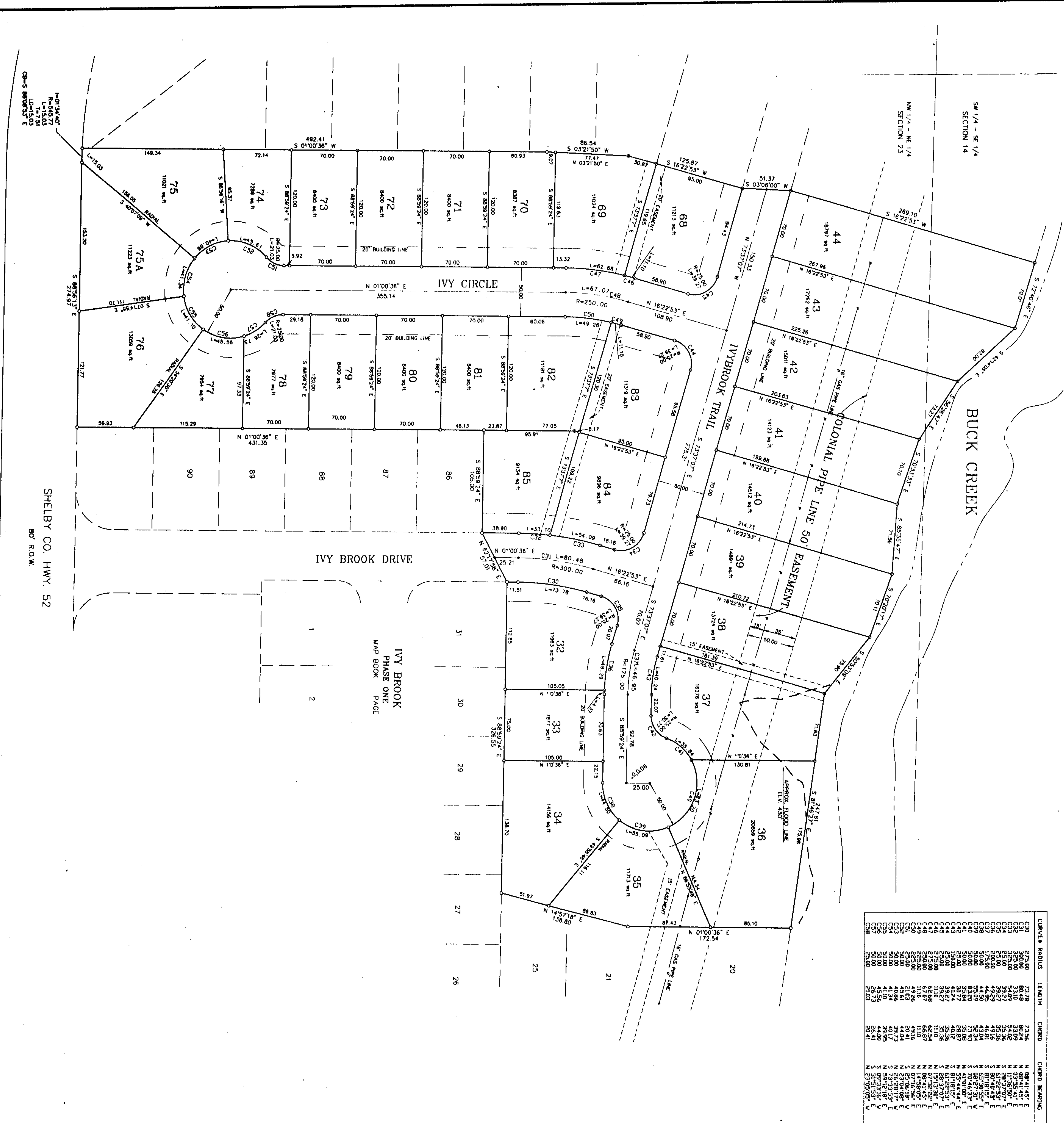


CURVE	RADIUS	LENGTH	CHORD	CHORD BEARING	DELTA ANGLE	TANGENT
C30	275.00	73.78	73.56	N 88°41'47" E	15°52'17"	37.21
C31	300.00	80.48	80.24	N 88°41'47" E	15°52'17"	40.49
C32	325.00	87.64	87.36	N 88°41'47" E	15°52'17"	43.71
C33	350.00	94.80	94.48	N 88°41'47" E	15°52'17"	46.93
C34	375.00	101.96	101.60	N 88°41'47" E	15°52'17"	50.15
C35	400.00	109.12	108.72	N 88°41'47" E	15°52'17"	53.37
C36	425.00	116.28	115.84	N 88°41'47" E	15°52'17"	56.59
C37	450.00	123.44	122.96	N 88°41'47" E	15°52'17"	59.81
C38	475.00	130.60	130.08	N 88°41'47" E	15°52'17"	63.03
C39	500.00	137.76	137.20	N 88°41'47" E	15°52'17"	66.25
C40	525.00	144.92	144.32	N 88°41'47" E	15°52'17"	69.47
C41	550.00	152.08	151.44	N 88°41'47" E	15°52'17"	72.69
C42	575.00	159.24	158.56	N 88°41'47" E	15°52'17"	75.91
C43	600.00	166.40	165.68	N 88°41'47" E	15°52'17"	79.13
C44	625.00	173.56	172.80	N 88°41'47" E	15°52'17"	82.35
C45	650.00	180.72	180.00	N 88°41'47" E	15°52'17"	85.57
C46	675.00	187.88	187.12	N 88°41'47" E	15°52'17"	88.79
C47	700.00	195.04	194.24	N 88°41'47" E	15°52'17"	92.01
C48	725.00	202.20	201.36	N 88°41'47" E	15°52'17"	95.23
C49	750.00	209.36	208.48	N 88°41'47" E	15°52'17"	98.45
C50	775.00	216.52	215.60	N 88°41'47" E	15°52'17"	101.67
C51	800.00	223.68	222.72	N 88°41'47" E	15°52'17"	104.89
C52	825.00	230.84	229.84	N 88°41'47" E	15°52'17"	108.11
C53	850.00	238.00	237.00	N 88°41'47" E	15°52'17"	111.33
C54	875.00	245.16	244.16	N 88°41'47" E	15°52'17"	114.55
C55	900.00	252.32	251.28	N 88°41'47" E	15°52'17"	117.77
C56	925.00	259.48	258.40	N 88°41'47" E	15°52'17"	121.00
C57	950.00	266.64	265.52	N 88°41'47" E	15°52'17"	124.22
C58	975.00	273.80	272.64	N 88°41'47" E	15°52'17"	127.44
C59	1000.00	280.96	279.80	N 88°41'47" E	15°52'17"	130.66
C60	1025.00	288.12	287.00	N 88°41'47" E	15°52'17"	133.88



IVY BROOK

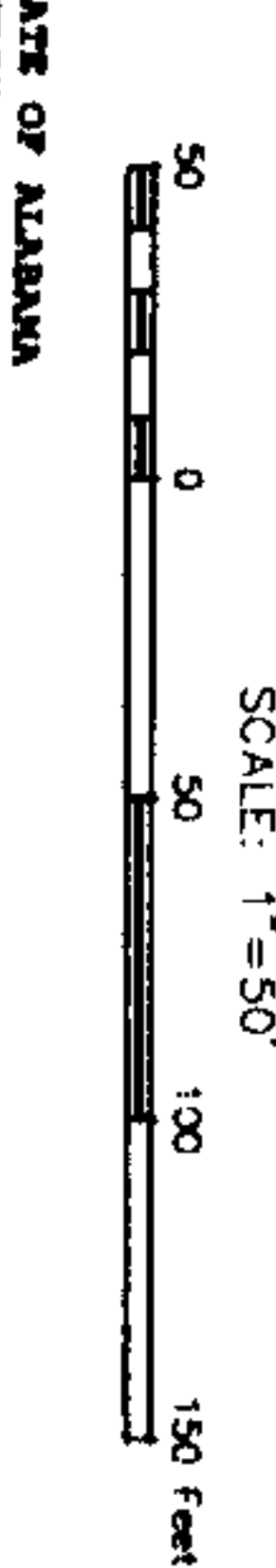
PHASE TWO

FIRST ADDITION

A SINGLE FAMILY, RESIDENTIAL SUBDIVISION SITUATED IN THE NW 1/4 OF THE NE 1/4, SECTION 23, AND THE SW 1/4 OF THE SE 1/4, SECTION 14, TOWNSHIP 20 SOUTH, RANGE 3 WEST, CITY OF PELHAM, SHELBY COUNTY, ALABAMA.

DEVELOPED BY:
 MOBLEY DEVELOPMENT, INC.
 300 NORTH 21 ST STREET
 BIRMINGHAM, ALABAMA

PREPARED BY:
 R.C. FARMER AND ASSOCIATES, INC.
 2219 HWY 56 WEST
 PELHAM, ALABAMA



1, Frances F. Bester, a Notary Public in and for said county and state, do hereby certify that Robert C. Farmer, whose name is attached to the foregoing certificate as surveyor, and who is known to me, acknowledged before me on this certificate, does so with full knowledge of the contents of said certificate, does so voluntarily as each individual with full authority thereof.

Given under my hand and seal this the 15th day of November, 1994.

Notary Public
 State of Alabama
 No. 14720

By: Robert C. Farmer DATE 11/14/94
 Robert C. Farmer, P.E.
 Ala Reg No 14720

1, Steven Mobley, President, Mobley Development, Inc., do hereby certify that Robert C. Farmer, whose name is attached to the foregoing certificate as surveyor, and who is known to me, acknowledged before me on this certificate, does so with full knowledge of the contents of said certificate, does so voluntarily as each individual with full authority thereof.

Given under my hand and seal this the 15th day of November, 1994.

Notary Public
 State of Alabama
 No. 11394

By: Robert F. Campbell DATE 11-2-94
 Robert F. Campbell
 City of Pelham

By: Robert F. Campbell DATE 11-3-94
 Robert F. Campbell
 City of Pelham

NOTE: All easements are for utility or drainage purposes and shall provide for means both within and without this subdivision.

Surveying, Engineering and/or Development are not responsible for providing Building sites free of drainage problems.

The name CIVIL-714/SUNVIMAZING
 Plot date 08/27/94

