

MAP BOOK 18 PAGE 115

PREPARED FOR: SCHOOL HOUSE PROPERTIES
 NO. 1 SHADY CREEK PARKWAY
 BIRMINGHAM, ALABAMA 35209

GREYSTONE VILLAGE - PHASE 2
 SITUATED IN SECTION 5, TOWNSHIP 19 SOUTH, RANGE 1 WEST
 SHELBY COUNTY, ALABAMA
 CITY OF HOOVER
 JUNE, 1994
 SCALE: 1" = 50'

APPROVED BY: WILL SHARPING, COMMISSIONER
 JUNE 28, 1994
 HONORABLE ALABAMA SENATOR
 BIRMINGHAM, ALABAMA 35209
 PHONE: (205) 871-1800



STATE OF ALABAMA
 J. ALBERT HILL, Notary Public
 My commission expires 12/31/95

STATE OF ALABAMA
 J. ALBERT HILL, Notary Public
 My commission expires 12/31/95

STATE OF ALABAMA
 JEFFERSON COUNTY, a body politic, in and for said county and state, do hereby certify that the foregoing plat of subdivision and plat of lots shown hereon was duly adopted by the Board of Commissioners of said county and is hereby certified as correct and true to the best of our knowledge and belief. Witness my hand and seal this 29th day of June, 1994.

By: *[Signature]*
 J. ALBERT HILL, Notary Public

STATE OF ALABAMA
 JEFFERSON COUNTY, a body politic, in and for said county and state, do hereby certify that the foregoing plat of subdivision and plat of lots shown hereon was duly adopted by the Board of Commissioners of said county and is hereby certified as correct and true to the best of our knowledge and belief. Witness my hand and seal this 29th day of June, 1994.

By: *[Signature]*
 J. ALBERT HILL, Notary Public

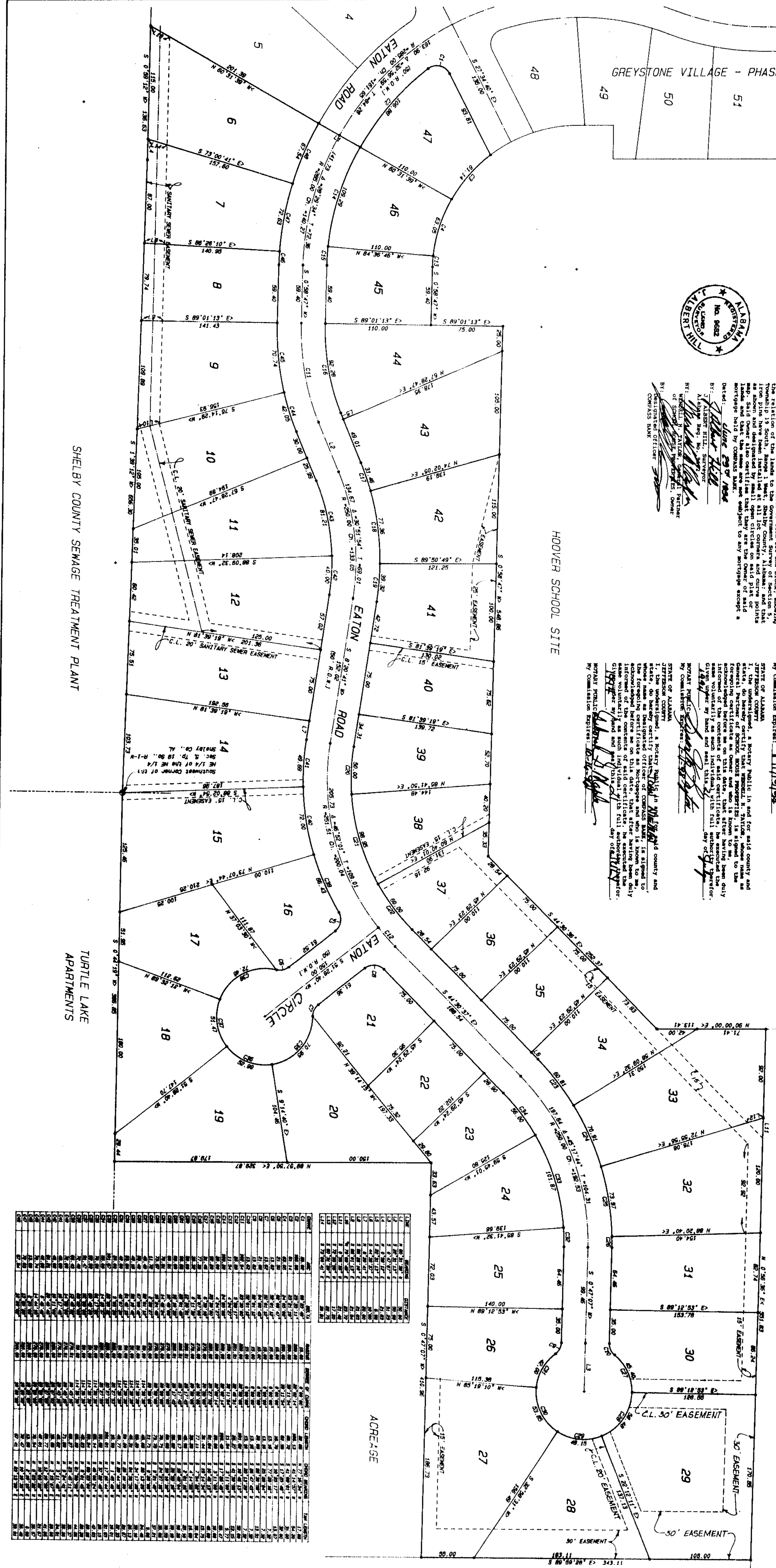
NOTES:
 1. All streets and roadways on this map are private roadways and are not to be dedicated to the public use of the State of Alabama until the City of Hoover has adopted a resolution to do so. The City of Hoover is hereby authorized to dedicate to the public use of the State of Alabama any streets and roadways on this map which it may deem appropriate to do so.

2. The City of Hoover is hereby authorized to dedicate to the public use of the State of Alabama any streets and roadways on this map which it may deem appropriate to do so.

3. The City of Hoover is hereby authorized to dedicate to the public use of the State of Alabama any streets and roadways on this map which it may deem appropriate to do so.

RESOLUTION:
 Be it resolved by the Mayor and the City Council of the City of Hoover, Alabama, that the plat of subdivision and plat of lots shown hereon be approved and that the City of Hoover be authorized to dedicate to the public use of the State of Alabama any streets and roadways on this map which it may deem appropriate to do so.

APPROVED BY: *[Signature]*
 JUNE 28, 1994



LOT NO.	ACREAGE	AREA (SQ. FT.)	PERCENT ACRES
1	0.02	1,360	0.02
2	0.02	1,360	0.02
3	0.02	1,360	0.02
4	0.02	1,360	0.02
5	0.02	1,360	0.02
6	0.02	1,360	0.02
7	0.02	1,360	0.02
8	0.02	1,360	0.02
9	0.02	1,360	0.02
10	0.02	1,360	0.02
11	0.02	1,360	0.02
12	0.02	1,360	0.02
13	0.02	1,360	0.02
14	0.02	1,360	0.02
15	0.02	1,360	0.02
16	0.02	1,360	0.02
17	0.02	1,360	0.02
18	0.02	1,360	0.02
19	0.02	1,360	0.02
20	0.02	1,360	0.02
21	0.02	1,360	0.02
22	0.02	1,360	0.02
23	0.02	1,360	0.02
24	0.02	1,360	0.02
25	0.02	1,360	0.02
26	0.02	1,360	0.02
27	0.02	1,360	0.02
28	0.02	1,360	0.02
29	0.02	1,360	0.02
30	0.02	1,360	0.02
31	0.02	1,360	0.02
32	0.02	1,360	0.02
33	0.02	1,360	0.02
34	0.02	1,360	0.02
35	0.02	1,360	0.02
36	0.02	1,360	0.02
37	0.02	1,360	0.02
38	0.02	1,360	0.02
39	0.02	1,360	0.02
40	0.02	1,360	0.02
41	0.02	1,360	0.02
42	0.02	1,360	0.02
43	0.02	1,360	0.02
44	0.02	1,360	0.02
45	0.02	1,360	0.02
46	0.02	1,360	0.02
47	0.02	1,360	0.02
48	0.02	1,360	0.02
49	0.02	1,360	0.02
50	0.02	1,360	0.02
51	0.02	1,360	0.02
52	0.02	1,360	0.02