

PETITION OF ALABAMA POWER COMPANY AND SOUTHERN ELECTRIC GENERATING COMPANY TO THE COUNTY COMMISSION OF SHELBY COUNTY, ALABAMA, FOR DESIGNATION OF LAND LOCATED IN SHELBY COUNTY, ALABAMA, AS AN INDUSTRIAL PARK (PURSUANT TO THE PROVISIONS OF ACT NO. 604, ADOPTED BY THE LEGISLATURE OF THE STATE OF ALABAMA, ON MAY 1, 1978), AND TO BE NAMED ALABAMA POWER COMPANY'S GASTON STEAM PLANT INDUSTRIAL PARK A

1. Alabama Power Company and Southern Electric Generating Company request the County Commission of Shelby County to designate as an Industrial Park (as provided for in Act No. 604, adopted by the Legislature of the State of Alabama on May 1, 1978) the compact and contiguous tract of land which is described in narrative fashion on Exhibit A hereto, and which is shown on the map attached as Exhibit B, such tract being more than ten acres in total size, located wholly within Shelby County, outside the boundaries of any municipality, owned 100 percent in interest based on assessed value for ad valorem tax purposes by Alabama Power Company and Southern Electric Generating Company, and which is used exclusively for industrial purposes or which is primarily suited for industrial development.

2. Alabama Power Company and Southern Electric Generating Company request that the Commission, prior to rendering the above-requested designation, hold a public hearing on this Petition, after first giving notice of the purpose, time and place of the public hearing by one publication in a newspaper of general circulation throughout Shelby County not less than ten days prior to the date set for the hearing.

3. The below-identified representatives of Alabama Power Company and Southern Electric Generating Company hereby certify that all of the above factual allegations are true and correct, and hereby consent on behalf of Alabama Power Company and Southern Electric Generating Company to such designation.

This the 26th day of March, 1990.

ATTEST:

Art P. Seath  
Its Secretary

ATTEST:

Art P. Seath  
Its Secretary

CONSENTING LANDOWNERS:  
ALABAMA POWER COMPANY

By Bill M. [Signature]  
Its Executive Vice President

SOUTHERN ELECTRIC GENERATING  
COMPANY

By Bill M. [Signature]  
Its Vice President

Harold Williams  
P.O. Box - 306  
Birmingham

BOOK 288 PAGE 797

STATE OF ALABAMA )  
COUNTY OF JEFFERSON )

I, the undersigned, a Notary Public in and for said State at large, hereby certify that Bill M. Guthrie, whose name as Executive Vice President of Alabama Power Company, a corporation, is signed to the foregoing Petition, and who is known to me, acknowledged before me on this day that, being informed of the contents of the Petition, he, as such officer and with full authority, executed the same voluntarily for and as the act of said corporation.

Given under my hand and official seal this the 26th day of March, 1990.

Shirley A. Thomas  
Notary Public

My Commission Expires: 8-15-93

BOOK 288 PAGE 798

STATE OF ALABAMA )  
COUNTY OF JEFFERSON )

I, the undersigned, a Notary Public in and for said State at large, hereby certify that Bill M. Guthrie, whose name as Vice President of Southern Electric Generating Company, a corporation, is signed to the foregoing Petition, and who is known to me, acknowledged before me on this day that, being informed of the contents of the Petition, he, as such officer and with full authority, executed the same voluntarily for and as the act of said corporation.

Given under my hand and official seal this the 26th day of March, 1990.

Shirley A. Thomas  
Notary Public

My Commission Expires: 8-15-93

EXHIBIT A

TO PETITION FOR DESIGNATION OF  
ALABAMA POWER COMPANY'S  
GASTON STEAM PLANT  
INDUSTRIAL PARK A

A parcel of land being a part of Sections 29, 31, 32, 33, Township 20 South, Range 2 East and Section 6, Township 21 South, Range 2 East, Shelby County, Alabama being more particularly described as follows:

Begin at the northeast corner of the Southeast Quarter of the Northeast Quarter (SE 1/4 of NE 1/4), Section 31, Township 20 South, Range 2 East, thence run north 88 degrees 41 minutes 23 seconds west a distance of 1,324.95 feet to a point; thence run north 01 degrees 10 minutes 03 seconds east a distance of 316.04 feet to a point; thence run south 40 degrees 33 minutes 46 seconds west a distance of 2,087.29 feet to a point; thence run south 01 degrees 09 minutes 44 seconds west a distance of 438.33 feet to a point on the northeasterly margin of the Wilsonville City Limits, said point having coordinates of North 999708.77 East 303906.78; thence run along an arc of a curve to the right having a radius of 5,280 feet a distance of 3,181.88 feet to a point on the northerly boundary of Southern Railroad Company right of way, said point having coordinates of North 997317.00 East 305931.90; thence run northeasterly, easterly and northeasterly along the northerly boundary of said Southern Railroad right of way a distance of 8,032.00 feet to a point; said point having coordinates of North 999892.10 East 312900.30; thence run north 86 degrees 56 minutes 00 seconds west a distance of 1,072.43 feet to a point; thence run north 01 degrees 24 minutes 03 seconds east a distance of 663.90 feet to a point; thence run north 88 degrees 45 minutes 43 seconds west a distance of 1,300.00 feet to a point, said point having coordinates of North 1000641.26 East 310545.94; thence run along the westerly bounday of Yellowleaf Creek in a northeasterly, northwesterly and northerly direction a distance of 6,302.00 feet to a point having coordinates of North 1005259.80 East 310627.58; thence run south 00 degrees 24 minutes 27 seconds west a distance of 1,316.00 feet to a point; thence run north 88 degrees 41 minutes 22 seconds west a distance of 819.85 feet to a point; thence run south 65 degrees 29 minutes 57 seconds west a distance of 2,376.47 feet to a point; thence run south 02 degrees 01 minutes 37 seconds west a distance of 1,612.60 feet to a point; thence run north 88 degrees 46 minutes 58 seconds west a distance of 988.12 feet to the point of beginning.

BOOK 288 PAGE 799

ALABAMA POWER COMPANY'S  
E. C. GASTON STEAM PLANT  
INDUSTRIAL PARK A

CERTIFICATE OF DESIGNATION

The undersigned, Thomas A. Snowden, Chairman of the Shelby County Commission, hereby certifies that the above-described tract of land was designated on April 23, 1980 as an Industrial Park by the Shelby County Commission under the provisions of Act No. 604 adopted by the Legislature of the State of Alabama on May 1, 1978.

This the 23 day of April, 1980

*Thomas A. Snowden, Jr.*  
Thomas A. Snowden, Chairman  
Shelby County Commission

BOOK 288 PAGE 800

TABLE OF BEARINGS AND DISTANCES  
OF A.P.CO. INDUSTRIAL PARK  
PARK A

LINE NO.	BEARING (DMS)	DISTANCE (FT)
1	N 88 41 23 W	1324.95
2	N 01 10 03 E	316.04
3	S 40 33 46 W	2087.29
4	S 01 09 44 W	439.33
5	SEE NOTE 5	8032.00
6	N 88 55 00 W	1072.43
7	N 01 24 03 E	683.90
8	N 88 45 43 W	1300.00
9	SEE NOTE 1	8302.00
10	S 00 24 27 W	1316.00
11	N 88 41 22 W	819.85
12	S 65 29 57 W	2376.47
13	S 02 01 37 W	1612.60
14	N 88 46 58 W	988.12

TABLE OF ARC LENGTH AND RADIUS  
OF A.P.CO. INDUSTRIAL PARK  
PARK A

LINE NO.	ARC LENGTH	DIRECTION	RADIUS
5	3181.88	RIGHT	5280

TABLE OF BEARINGS AND DISTANCES  
OF A.P.CO. INDUSTRIAL PARK  
PARK B

LINE NO.	BEARING (DMS)	DISTANCE (FT)
15	SEE NOTE 5	8302.00
16	SEE NOTE 1	11138.00
17	N 01 19 58 E	1873.53

TABLE OF ARC LENGTH AND RADIUS  
OF A.P.CO. INDUSTRIAL PARK  
PARK B

LINE NO.	ARC LENGTH	DIRECTION	RADIUS
17	4493.02	RIGHT	5280

State of Alabama  
Shelby County

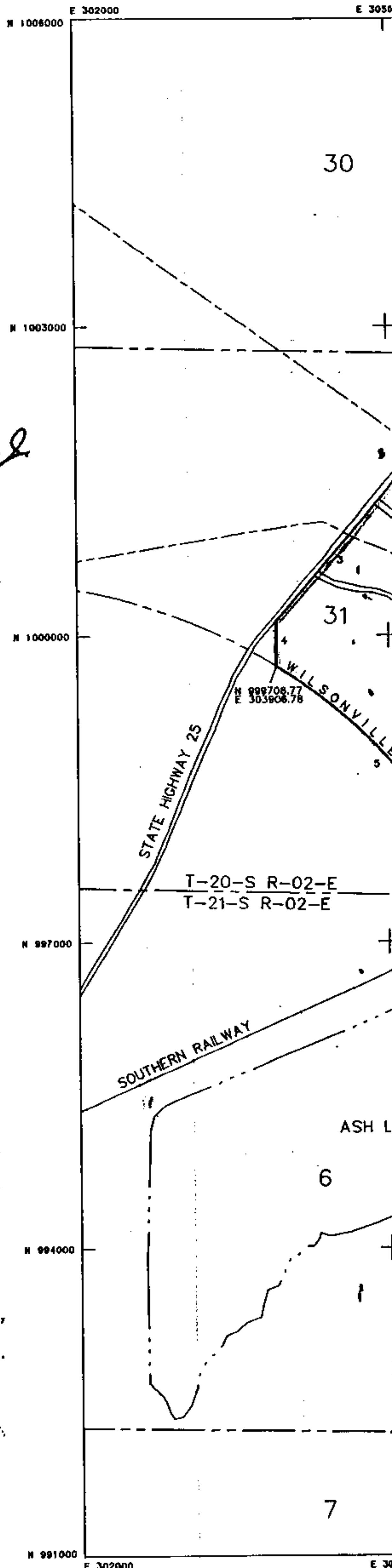
I, the undersigned, Howard M. Barnes, for Alabama Power Company as a Registered Professional Land Surveyor, hereby certify that this map was made based in part upon a true and correct survey performed by employees of Alabama Power Company, and in part from previous maps as noted and is a true and correct depiction of the lands which Alabama Power Company requests the County Commission of Shelby County, Alabama to designate as an Industrial Park under the provisions of Act No. 604 adopted by the Legislature of the State of Alabama on May 1, 1978.

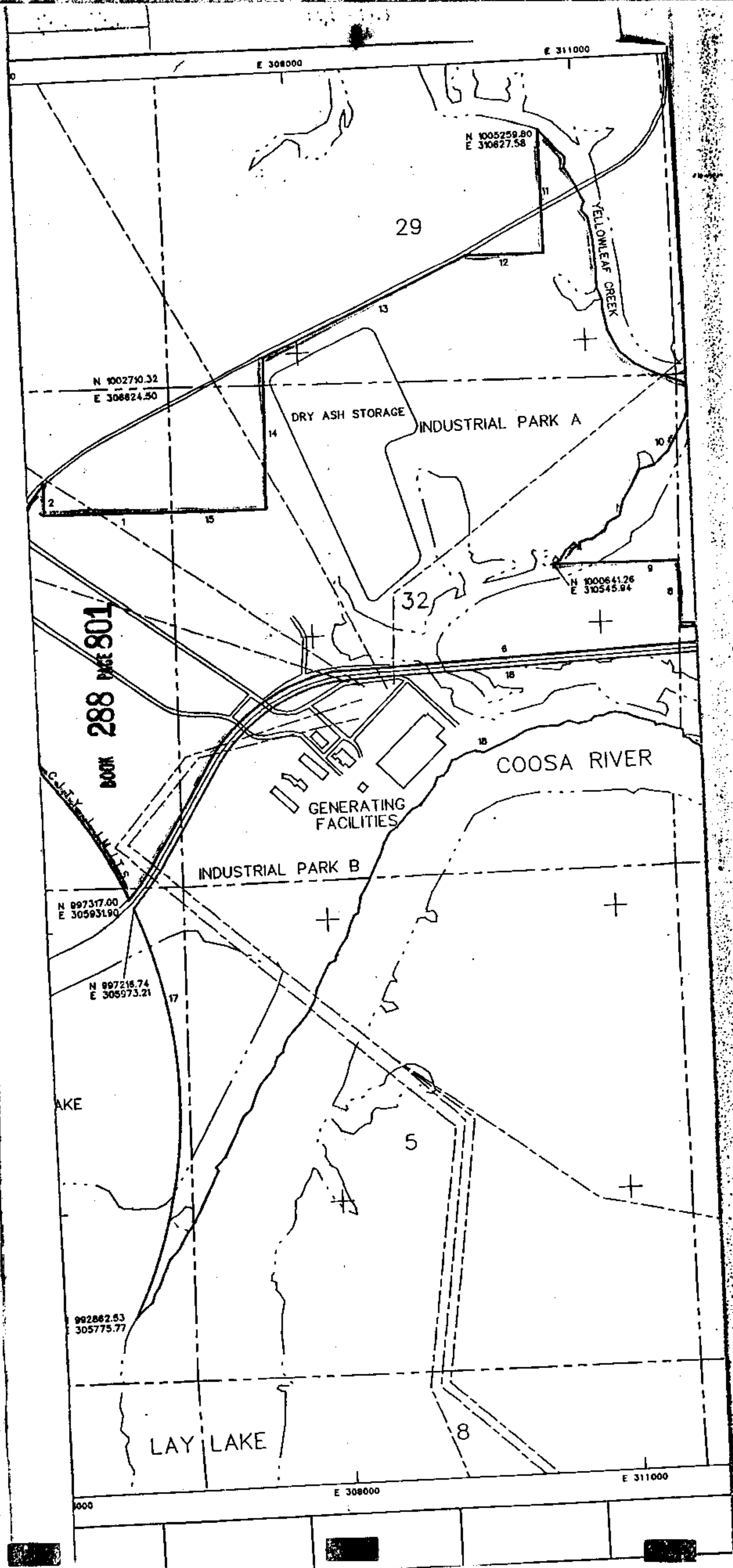
Alabama Power Company  
by

*Howard M. Barnes*

Howard M. Barnes

Supervisor-Construction Survey  
Survey and Mapping  
Registered Professional Land Surveyor  
Alabama Register No. 3516





28

N 1002580.86  
E 311938.84

N 1003000

33

N 999892.10  
E 312900.30

N 1000000

N 999878.28  
E 313149.35

N 998203.10  
E 313110.30

N 997000

4

N 994000

9

N 991000

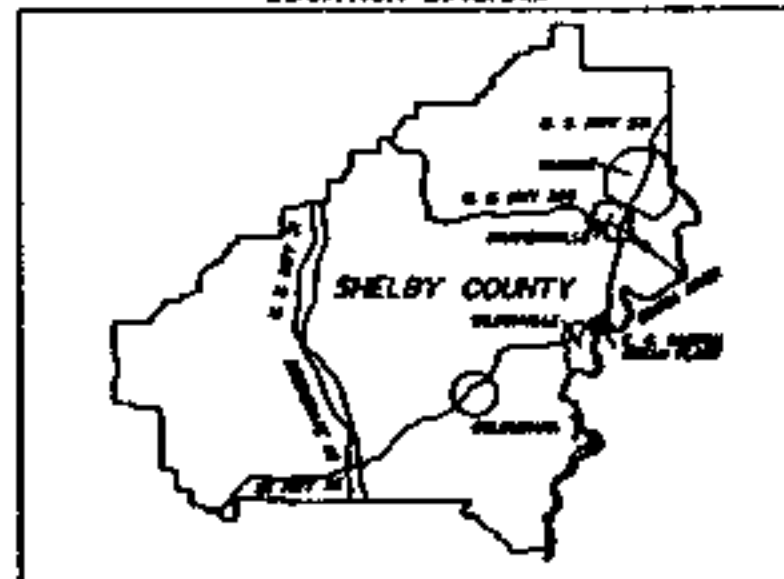
E 314000

BOOK 288 PAGE 802

## EXHIBIT B

TO PETITION FOR DESIGNATION  
OF ALABAMA POWER COMPANY'S  
GASTON STEAM PLANT  
INDUSTRIAL PARK A

LOCATION DIAGRAM



LEGEND

—————	INDUSTRIAL PARK BOUNDARY
-----	SECTION LINES
~~~~~	WATER BOUNDARY
+++++	RAILROAD TRACKS
-----	TRANSMISSION LINES

### NOTES:

- 1) ALL WATER BOUNDARIES WERE DIGITIZED FROM USGS 7.5 MINUTE QUAD SHEETS LABELED WILSONVILLE AND HARPERSVILLE.
- 2) SECTION AND TRANSMISSION LINES WERE DIGITIZED FROM THE QUAD SHEETS LISTED IN NOTE 1.
- 3) PLANIMETRIC FEATURES FOR THE GENERATING FACILITIES WERE DIGITIZED FROM THE WILSONVILLE QUAD SHEET.
- 4) THE CITY LIMITS OF WILSONVILLE WERE OBTAINED FROM APCO DRAWING E-140223.
- 5) RIGHT OF WAY FOR RAILROAD OBTAINED FROM SOUTHERN RAILWAY COMPANY.
- 6) TOTAL ACREAGE IN THE INDUSTRIAL PARK
 

PARK A	593.94 ACRES
PARK B	286.16 ACRES
TOTAL	880.10 ACRES

600 0 600 1200 1800  
SCALE 1 INCH = 600 FEET

PRODUCED BY: ALABAMA POWER COMPANY  
CONSTRUCTION DEPARTMENT  
SURVEY AND MAPPING

### ALABAMA POWER COMPANY

JOB A.P.CO. GASTON STEAM PLANT  
DRAWN INDUSTRIAL PARKS A & B

SCALE 1" = 600'

SHEET 1 OF 1 SHEETS

SUPERSEDES

D-365841

DRAWN BY: [ ] CHECKED: [ ] TRACED: [ ]  
APPROVED: [ ] DATE: [ ]  
APPROVED: [ ] DATE: [ ]



NOTICE OF PUBLIC HEARING OF PETITION OF ALABAMA POWER COMPANY AND SOUTHERN ELECTRIC GENERATING COMPANY FOR DESIGNATION OF CERTAIN LANDS LOCATED IN SHELBY COUNTY, ALABAMA, AS AN INDUSTRIAL PARK (PURSUANT TO THE PROVISIONS OF ACT NO. 604 ADOPTED BY THE LEGISLATURE OF THE STATE OF ALABAMA ON MAY 1, 1978), AND TO BE NAMED ALABAMA POWER COMPANY'S GASTON STEAM PLANT, INDUSTRIAL PARK A

Notice is hereby given that a public hearing on the above-described Petition will be held in the auditorium on the second floor of the Shelby County Courthouse at Columbiana, Alabama, at 6:00 o'clock, p. m., on the 23rd day of April, 1990. The description of the tract of land which is requested to be designated as an Industrial Park is described in Exhibit A hereto. This the 26th day of March, 1990.

ATTEST:

SHELBY COUNTY COMMISSION

By:

Myra B. DeMarco  
Clerk of the Shelby County  
Commission

By:

Thomas A. Snowden, Jr.  
Chairman

(Please affix County Seal)

BOOK 288 PAGE 803

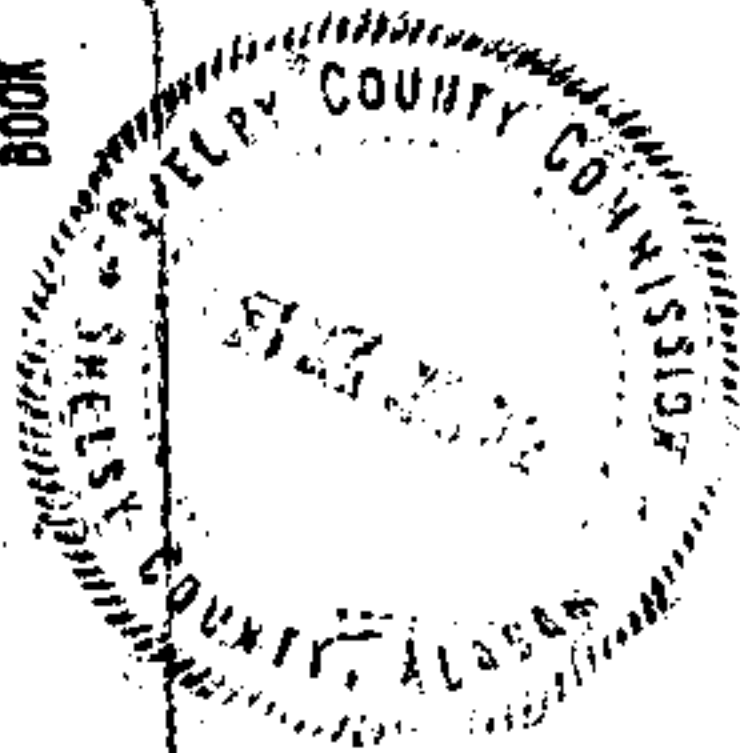


EXHIBIT A

TO PETITION FOR DESIGNATION OF  
ALABAMA POWER COMPANY'S  
GASTON STEAM PLANT  
INDUSTRIAL PARK A

A parcel of land being a part of Sections 29, 31, 32, 33, Township 20 South, Range 2 East and Section 6, Township 21 South, Range 2 East, Shelby County, Alabama being more particularly described as follows:

Begin at the northeast corner of the Southeast Quarter of the Northeast Quarter (SE 1/4 of NE 1/4), Section 31, Township 20 South, Range 2 East, thence run north 88 degrees 41 minutes 23 seconds west a distance of 1,324.95 feet to a point; thence run north 01 degrees 10 minutes 03 seconds east a distance of 316.04 feet to a point; thence run south 40 degrees 33 minutes 46 seconds west a distance of 2,087.29 feet to a point; thence run south 01 degrees 09 minutes 44 seconds west a distance of 438.33 feet to a point on the northeasterly margin of the Wilsonville City Limits, said point having coordinates of North 999708.77 East 303906.78; thence run along an arc of a curve to the right having a radius of 5,280 feet a distance of 3,181.88 feet to a point on the northerly boundary of Southern Railroad Company right of way, said point having coordinates of North 997317.00 East 305931.90; thence run northeasterly, easterly and northeasterly along the northerly boundary of said Southern Railroad right of way a distance of 8,032.00 feet to a point; said point having coordinates of North 999892.10 East 312900.30; thence run north 86 degrees 56 minutes 00 seconds west a distance of 1,072.43 feet to a point; thence run north 01 degrees 24 minutes 03 seconds east a distance of 663.90 feet to a point; thence run north 88 degrees 45 minutes 43 seconds west a distance of 1,300.00 feet to a point, said point having coordinates of North 1000641.26 East 310545.94; thence run along the westerly bounday of Yellowleaf Creek in a northeasterly, northwesterly and northerly direction a distance of 6,302.00 feet to a point having coordinates of North 1005259.80 East 310627.58; thence run south 00 degrees 24 minutes 27 seconds west a distance of 1,316.00 feet to a point; thence run north 88 degrees 41 minutes 22 seconds west a distance of 819.85 feet to a point; thence run south 65 degrees 29 minutes 57 seconds west a distance of 2,376.47 feet to a point; thence run south 02 degrees 01 minutes 37 seconds west a distance of 1,612.60 feet to a point; thence run north 88 degrees 46 minutes 58 seconds west a distance of 988.12 feet to the point of beginning.



RESOLUTION OF THE COUNTY COMMISSION OF SHELBY COUNTY, ALABAMA, ON PETITION OF ALABAMA POWER COMPANY AND SOUTHERN ELECTRIC GENERATING COMPANY FOR DESIGNATION OF LANDS LOCATED IN SHELBY COUNTY, ALABAMA, AS AN INDUSTRIAL PARK (PURSUANT TO THE PROVISIONS OF ACT NO. 604, ADOPTED BY THE LEGISLATURE OF THE STATE OF ALABAMA ON MAY 1, 1978), AND TO BE NAMED ALABAMA POWER COMPANY'S GASTON STEAM PLANT INDUSTRIAL PARK A

WHEREAS, Alabama Power Company and Southern Electric Generating Company did request on March 26, 1990, that the lands described on Exhibit A hereto be designated as an Industrial Park, under the provisions of the above act; and

WHEREAS, the map accompanying the Petition shows the lands which the Petitioner requests to be designated as an Industrial Park; and

WHEREAS, the County Commission finds the factual averments set out in the Petition of Alabama Power Company and Southern Electric Generating Company to be true and correct; and

WHEREAS, the Shelby County Commission did give more than ten days notice of the purpose, time and place of a public hearing to be held on such Petition by publication (a) three times in The Shelby County Reporter, a newspaper of general circulation throughout Shelby County, Alabama, such publications occurring in the editions of April 4, April 11 and April 18, 1990, a certified copy of such publications being attached hereto, and (b) two times in The Birmingham News, such publications occurring in the editions of April 11 and April 18, 1990, a certified copy of such publications being attached hereto.

WHEREAS, the County Commission of Shelby County did at 6:00 o'clock p.m. on April 23, 1990, hold a public hearing on such Petition, at which time the Commission heard all persons who appeared and desired to speak for or against the granting of such Petition.

NOW, THEREFORE, be it resolved by the Shelby County Commission that such Petition of Alabama Power Company and Southern Electric Generating Company be granted, and that the above-described land be designated as an Industrial Park pursuant to the provisions of said Act No. 604, with all the legal effect attaching thereto as described in such Act.

This the 23rd day of April, 1990.

ATTEST:

By *Myra B. Satter*  
Clerk of the Shelby County  
Commission

SHELBY COUNTY COMMISSION

By *Thomas A. Snowden, Jr.*  
Thomas A. Snowden, Jr.  
Chairman

By \_\_\_\_\_  
Ken Wilson, Commissioner

By \_\_\_\_\_  
Steve Chambers, Commissioner

By *Howard Foster*  
Howard Foster, Commissioner

By *Paul Yeager*  
Paul Yeager, Commissioner

BOOK 288 PAGE 806

EXHIBIT A

TO PETITION FOR DESIGNATION OF  
ALABAMA POWER COMPANY'S  
GASTON STEAM PLANT  
INDUSTRIAL PARK A

A parcel of land being a part of Sections 29, 31, 32, 33, Township 20 South, Range 2 East and Section 6, Township 21 South, Range 2 East, Shelby County, Alabama being more particularly described as follows:

Begin at the northeast corner of the Southeast Quarter of the Northeast Quarter (SE 1/4 of NE 1/4), Section 31, Township 20 South, Range 2 East, thence run north 88 degrees 41 minutes 23 seconds west a distance of 1,324.95 feet to a point; thence run north 01 degrees 10 minutes 03 seconds east a distance of 316.04 feet to a point; thence run south 40 degrees 33 minutes 46 seconds west a distance of 2,087.29 feet to a point; thence run south 01 degrees 09 minutes 44 seconds west a distance of 438.33 feet to a point on the northeasterly margin of the Wilsonville City Limits, said point having coordinates of North 999708.77 East 303906.78; thence run along an arc of a curve to the right having a radius of 5,280 feet a distance of 3,181.88 feet to a point on the northerly boundary of Southern Railroad Company right of way, said point having coordinates of North 997317.00 East 305931.90; thence run northeasterly, easterly and northeasterly along the northerly boundary of said Southern Railroad right of way a distance of 8,032.00 feet to a point; said point having coordinates of North 999892.10 East 312900.30; thence run north 86 degrees 56 minutes 00 seconds west a distance of 1,072.43 feet to a point; thence run north 01 degrees 24 minutes 03 seconds east a distance of 663.90 feet to a point; thence run north 88 degrees 45 minutes 43 seconds west a distance of 1,300.00 feet to a point, said point having coordinates of North 1000641.26 East 310545.94; thence run along the westerly bounday of Yellowleaf Creek in a northeasterly, northwesterly and northerly direction a distance of 6,302.00 feet to a point having coordinates of North 1005259.80 East 310627.58; thence run south 00 degrees 24 minutes 27 seconds west a distance of 1,316.00 feet to a point; thence run north 88 degrees 41 minutes 22 seconds west a distance of 819.85 feet to a point; thence run south 65 degrees 29 minutes 57 seconds west a distance of 2,376.47 feet to a point; thence run south 02 degrees 01 minutes 37 seconds west a distance of 1,612.60 feet to a point; thence run north 88 degrees 46 minutes 58 seconds west a distance of 988.12 feet to the point of beginning.

CERTIFICATE OF DESIGNATION

The undersigned, Thomas A. Snowden, Jr., Chairman of the Shelby County Commission, hereby certifies that the tract of land described above was designated on April 23, 1990 as an Industrial Park by the Shelby County Commission under the provisions of Act No. 604 adopted by the Legislature of the State of Alabama on May 1, 1978.

This 23rd day of April, 1990.


  
Thomas A. Snowden, Jr.  
Chairman  
Shelby County Commission

EXHIBIT B  
TO ORDER OF SHELBY COUNTY COMMISSION  
FOR ATTACHMENT OF PUBLICATION CERTIFICATION

STATE OF ALABAMA  
SHELBY COUNTY

Personally appeared before me, Judge of Probate, in and for said county, Arthur E. Segers, who being duly sworn according to law deposes and says that he is Publisher of the SHELBY COUNTY REPORTER, a newspaper published in said county, and that publication of a certain notice, a true copy of which is hereto affixed, has been made in said newspaper .....weeks consecutively, to-wit in issues thereof dated as follows:

April 4, 11 and 18, 1990

*Arthur E. Segers*

Publisher

Subscribed and sworn before me this 15 day of April, 1990

THOMAS A. SNOWDEN, JR., Judge of Probate

Printers Fee \$319.78

LEGAL NOTICE  
NOTICE OF PUBLIC HEARING OF  
PETITION OF ALABAMA POWER  
COMPANY AND SOUTHERN  
ELECTRIC GENERATING  
COMPANY FOR DESIGNATION  
OF CERTAIN LANDS LOCATED IN  
SHELBY COUNTY, ALABAMA, AS  
AN INDUSTRIAL PARK  
(PURSUANT TO THE PROVISIONS  
OF ACT NO. 604 ADOPTED BY THE  
LEGISLATURE OF THE STATE OF  
ALABAMA ON MAY 1, 1978), AND  
TO BE NAMED ALABAMA POWER  
COMPANY'S GASTON STEAM  
PLANT, INDUSTRIAL PARK A

Notice is hereby given that a public hearing on the above-described Petition will be held in the auditorium on the second floor of the Shelby County Courthouse, at Columbiana, Alabama, at 6:00 o'clock, p.m., on the 23rd day of April, 1990. The description of the tract of land which is requested to be designated as an Industrial Park is described in Exhibit A hereto.

EXHIBIT A  
TO PETITION FOR DESIGNATION  
OF  
ALABAMA POWER COMPANY'S  
GASTON STEAM PLANT  
INDUSTRIAL PARK A

A parcel of land being a part of Sections 29, 31, 32, 33, Township 20 South, Range 2 East and Section 8, Township 21 South, Range 2 East, Shelby County, Alabama being more particularly described as follows:

Begin at the northeast corner of the Southeast Quarter of the Northeast Quarter (SE 1/4 of NE 1/4), Section 31, Township 20 South, Range 2 East, thence run north 88 degrees 41 minutes 23 seconds west a distance of 1,324.95 feet to a point; thence run north 01 degrees 10 minutes 03 seconds east a distance of 316.04 feet to a point; thence run south 40 degrees 33 minutes 48 seconds west a distance of 2,087.29 feet to a point; thence run south 01 degrees 08 minutes 44 seconds west a distance of 438.33 feet to a point on the northeasterly margin of the Wilsonville City Limits, said point having coordinates of North 999708.77 East 303906.78; thence run along an arc of a curve to the right having a radius of 5,280 feet a distance of 3,181.88 feet to a point on the northerly boundary of Southern Railroad Company right of way, said point having coordinates of North 887317.00 East 305931.90; thence run northeasterly, easterly and northeasterly along the northerly boundary of said Southern Railroad right of way a distance of 8,032.00 feet to a point; said point having coordinates of North 999892.10 East 312900.30; thence run north 88 degrees 56 minutes 00 seconds west a distance of 1,072.43 feet to a point; thence run north 01 degrees 24 minutes 03 seconds east a distance of 660.90 feet to a point; thence run north 88 degrees 45 minutes 43 seconds west a distance of 1,300.00 feet to a point, said point having coordinates of North 1000641.28 East 310545.94; thence run along the westerly boundary of Yellowleaf Creek in a northeasterly, northwesterly and northerly direction a distance of 6,302.00 feet to a point having coordinates of North 1005259.80 East 310827.58; thence run south 00 degrees 24 minutes 27 seconds west a distance of 1,315.00 feet to a point; thence run north 88 degrees 41 minutes 22 seconds west a distance of 819.85 feet to a point; thence run south 65 degrees 29 minutes 57 seconds west a distance of 2,376.47 feet to a point; thence run south 02 degrees 01 minutes 57 seconds west a distance of 1,812.80 feet to a point; thence run north 88 degrees 46 minutes 58 seconds west a distance of 988.12 feet to the point of beginning.

This the 28th day of March, 1990.  
ATTEST:  
SHELBY COUNTY COMMISSION

By: Myra B. DeMarco  
Clerk of the Shelby County  
Commission

By: Thomas A. Snowden Jr.  
Thomas A. Snowden, Jr.  
Chairman

Mar 28 Apr 4, 11, 18, 1990 #9172

BOOK 288 PAGE 808

#9172

EXHIBIT B  
TO ORDER OF SHELBY COUNTY COMMISSION  
FOR ATTACHMENT OF PUBLICATION CERTIFICATION

BO 132

AFFIDAVIT OF PUBLICATION

THE BIRMINGHAM NEWS COMPANY  
PUBLISHERS OF

**The Birmingham News**

AGENTS FOR

**Birmingham Post-Herald**

STATE OF ALA. SHELBY CO.  
I CERTIFY THIS  
INSTRUMENT WAS FILED  
90 APR 26 PM 2:53

JUDGE OF PROBATE

PASTE CLIPPING HERE

NOTICE OF PUBLIC HEARING OF PETITION OF ALABAMA POWER COMPANY AND SOUTHERN ELECTRIC COMPANY FOR DESIGNATION OF CERTAIN LANDS LOCATED IN SHELBY COUNTY, ALABAMA, AS AN INDUSTRIAL PARK (PURSUANT TO THE PROVISIONS OF ACT NO. 44 ADOPTED BY THE LEGISLATURE OF THE STATE OF ALABAMA ON MAY 1, 1978, AND TO BE NAMED ALABAMA POWER COMPANY GASTON STEAM PLANT INDUSTRIAL PARK.)

Shelby County Commission  
By: Thomas A. Snowden, Jr.  
Chairman

ATTEST:  
By: Myra R. DeMarco  
Clerk of the Shelby County Commission

TO PETITION FOR DESIGNATION OF ALABAMA POWER COMPANY GASTON STEAM PLANT INDUSTRIAL PARK

A parcel of land being a part of sections 29, 31, 32, 33, Township 20 South, Range 2 East, and Section 6, Township 21 South, Range 2 East, Shelby County, Alabama, being more particularly described as follows: Beginning at the northeast corner of the southeast quarter of the northeast quarter of Section 29, Township 20 South, Range 2 East; thence run north 88 degrees 41 minutes 23 seconds west a distance of 1,324.32 feet to a point; thence run north 61 degrees 10 minutes 13 seconds east a distance of 314.04 feet to a point; thence run south 80 degrees 33 minutes 46 seconds west a distance of 2,087.29 feet to a point; thence run south 81 degrees 07 minutes 44 seconds west a distance of 428.33 feet to a point on the northeasterly margin of the Willapville City limits, said point having coordinates of North 3090.77 East 30594.70; thence run along an arc of a circle to the right having a radius of 5,730 feet a distance of 3,181.88 feet to a point on the northerly boundary of Southern Railroad Company right of way, said point having coordinates of North 39731.70 East 305931.60; thence run northeasterly, easterly and northeasterly along the northerly boundary of said Southern Railroad right of way a distance of 1,052.00 feet to a point; said point having coordinates of North 39749.10 East 312900.30; thence run north 84 degrees 56 minutes 00 seconds west a distance of 1,072.43 feet to a point; thence run north 61 degrees 24 minutes 10 seconds east a distance of 663.70 feet to a point; thence run north 88 degrees 45 minutes 43 seconds west a distance of 1,300.00 feet to a point, said point having coordinates of North 1000641.24 East 310345.94; thence run along the westerly boundary of Yellowleaf Creek in a northeasterly, northwesterly and northerly direction a distance of 6,302.00 feet to a point having coordinates of North 1005259.80 East 310627.90; thence run south 80 degrees 24 minutes 27 seconds west a distance of 1,316.00 feet to a point; thence run north 88 degrees 41 minutes 22 seconds west a distance of 619.85 feet to a point; thence run south 85 degrees 21 minutes 57 seconds west a distance of 2,376.47 feet to a point; thence run south 02 degrees 01 minutes 47 seconds west a distance of 1,612.60 feet to a point; thence run north 88 degrees 40 minutes 28 seconds west a distance of 988.12 feet to the point of beginning.

STATE OF ALABAMA, } ss:  
County of Jefferson

On this 19<sup>th</sup> day of April  
A.D. one thousand nine hundred and NINETY  
personally appeared before me,  
William K. Ingram

a Notary Public in and for the County and State aforesaid  
Janice Jenkins

who being duly sworn according to law, declares that he is Bookkeeper

of "The Birmingham News" and "The Birmingham Post Herald", newspapers published in the City of Birmingham, in the County of Jefferson, State of Alabama, and that the advertisement, a true copy of which is herewith attached, appeared in "The Birmingham News" and "The Birmingham Post-Herald" on the following dates:

April 11, 18, 1990

Signed Janice Jenkins

Subscribed and sworn to before me this 19<sup>th</sup> day of April A.D. 1990

Notary Public.

My Commission Expires February 5, 1992

1. Doc. Fee	
2. Notary Fee	32.50
3. Recording Fee	3.00
4. Indexing Fee	
5. No Tax Fee	
6. Certified Fee	1.00
Total	36.50